

HAITIAN HUAYUAN MACHINERY (INDIA) PVT. LTD.

Mascot Industrial Park, Plot # C 1
 Kadi-Detroj Road, Jadavpura Village,
 Taluka & Dist.: Mehsana, Gujarat - 382 715,India
 Tel: +91 89659 58888
 E-Mail:info@haitianindia.com
 Website : www.haitianindia.com

**Thanks & Regards
 Guo Juntao**

Application support
 15968059152/664813
 Haitian Group Overseas Management Center
 No. 1, South Ring Road, Free Trade Zone, Beilun District, Ningbo City, Zhejiang Province



Logistics industry Application

HA/pegasus



HT 202.409.20-IV



Logistics industry Application

As the scale of logistics demand has reached a new high, the efficiency and sustainability of logistics transportation have been improved, and pallets, turnover boxes, aviation boxes and bins have become very popular. And with the continuous promotion of the garbage classification policy, garbage bin products will continue to maintain a strong demand for production.

More product sizes and higher product strength also put forward more demands for injection molding machines. In this context, the original logistics specific machine has been updated to follow the trend. The new logistics specific machine has a more complete product line, covering a 2~40kg product line, equipped with more wear-resistant plasticizing components, and capable of larger mold sizes and bigger shot weight, than the standard machine.

Product structure

Clamping force
8000-41,000 kN



Diversified Solutions

◎ A variety of machine types are available.

Products in the logistics industry cover all aspects of life, so the size and weight distribution range varies, with an increased demand in combination of machine tonnage and injection volume requirements. Haitian has launched 9 variations of the standard 3 platen logistics specific machines and 4 variations of the standard two-platen combinations ;

◎ Mold adaptability

Most deep cavity molds has a larger mold thickness, HA logistics specific machine has a specially designed mechanical structure to allow a for a larger mold opening distance, suitable for easier mold installation, and better mold adaptability;

◎ Increased injection weight

Aiming at the characteristics of larger weight products in the logistics industry, Haitian has optimized the injection structure and the ratio of screw stroke, with increasing the theoretical injection volume, making it more suitable for the production of large products, and ensuring a higher yield of injection molded products;

◎ High wear resistant plasticizing components

The materials used in the logistics industry are relatively complex, and some products will contain PE, PP with mixed additives and recycled material. The material flow is poor and it requires high wear resistant plasticizing components to process the material efficiently. The special screw has strong plasticizing ability and excellent plasticizing.

Toggle machine can be combined

CLAMPING UNIT (kN)	INJECTION UNIT											
	4550	6350	7950	10600	13700	19300	42000	48000	58000	62000	89000	106300
HA8000			Standard range									
HA10000				Standard range								
HA17000					Standard range							
HA22500						Standard range						
HA25000							Standard range					
HA29000								Standard range				
HA33500									Standard range			
HA41000										Standard range		

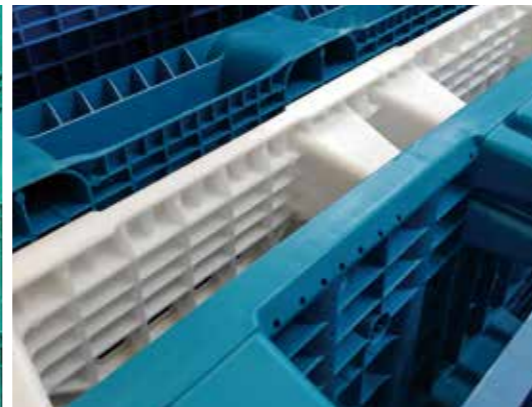
Standard range Combination possibilities

Two plates machine can be combined

CLAMPING UNIT (kN)	INJECTION UNIT						
	17500	22500	32500	40500	50500	62500	93500
HA14000	Standard range						
HA21000			Standard range				
HA24000				Standard range			
HA27000					Standard range		
HA33000						Standard range	
HA41000							Standard range

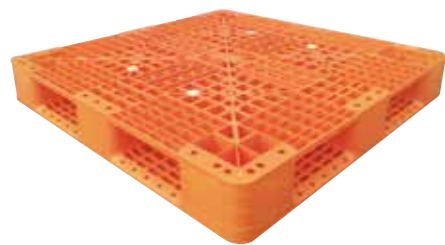
Standard range Combination possibilities

Logistics industry Application



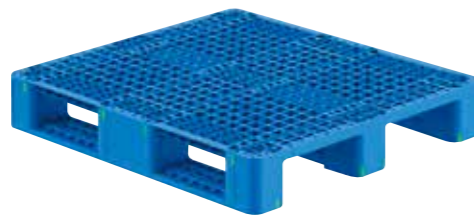
Double-sided pallet

Machine: HA22500/42000pegasus
 Raw material: PP
 Size: 1200x1000x150mm
 Weight: 14kg



Large pallet

Machine: HA27000/62500pegasus
 Raw material: PP
 Size: 1400x1200x170mm
 Weight: 20kg



240L Garbage bin (body)

Machine: HA21000/32500pegasus
 Raw material: PP/PE
 Size: 587x729x1050mm
 Weight: 10kg



1200L Garbage bin (body) L-80 Pet air carrier

Machine: HA41000/93500pegasus
 Raw material: PP
 Size: 1373x1073x1354mm
 Weight: 35kg



830 Circulation case

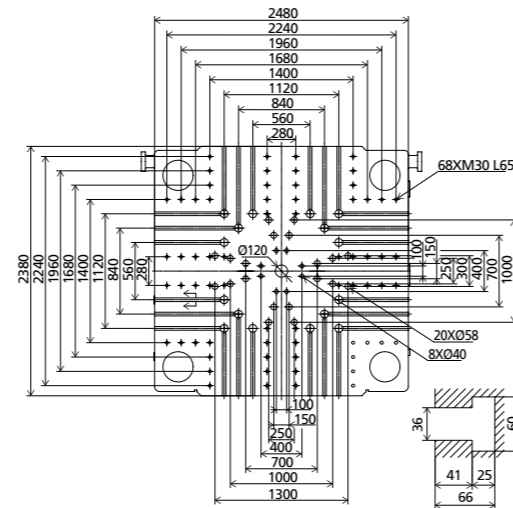
Machine: HA10000/10600pegasus
 Raw material: PP
 Size: 830x590x420mm
 Weight: 4.5kg



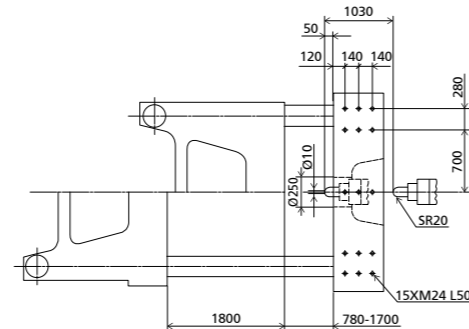
Logistics Specific Machine HA22500/42000 pegasus

		42000
INJECTION UNIT		
Screw diameter	mm	190
Screw L/D ratio	L/D	22.4
Injection volume (theoretical)	cm ³	29147
Injection weight (PS)	g	26523
Injection rate	g/s	1815
Injection pressure	MPa	143
Plasticizing rate (GPPS) ①	g/s	/
Plasticizing rate (HDPE) ②	g/s	305
Screw speed	rpm	0~65
CLAMPING UNIT		
Three-Platen		
Clamping force	kN	22500
Mold opening stroke	mm	1800
Dist. between tie bars (H×V)	mm	1750×1600
Mold height max.	mm	1700
Mold height min.	mm	780
Ejector stroke	mm	400
Ejector force	kN	430
OTHERS		
Pump motor power	kW	85×2+55
Heater power	kW	212
Machine dimension (L×W×H)	m	18.15×3.56×4.43
Machine weight	t	150
Hopper capacity	kg	400
Oil tank	l	2250

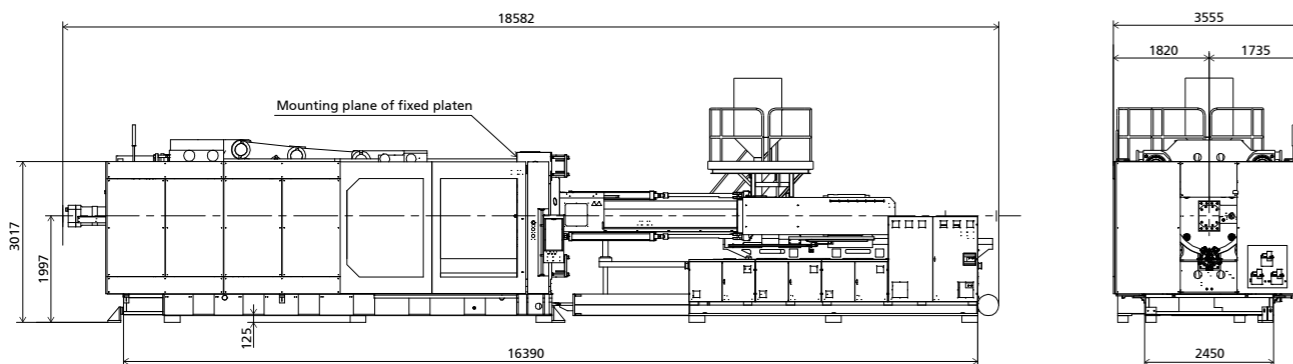
Moving platen dimensions



Platen side dimensions



Machine dimensions



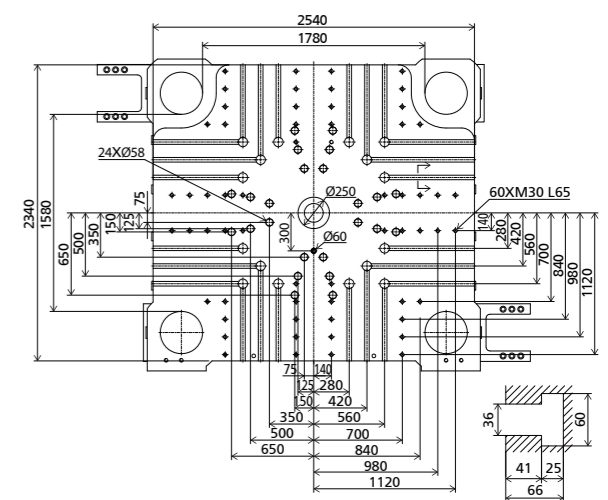
Note: ① Plasticizing rate(GPPS): GB standard,with application of GPPS plasticizing capacity of 3-zone screws
 ② Plasticizing rate(HDPE): Euromap 19,with application of HDPE plasticizing capacity of barrier screws

We reserve the right to make changes as a result of further technical advantages.

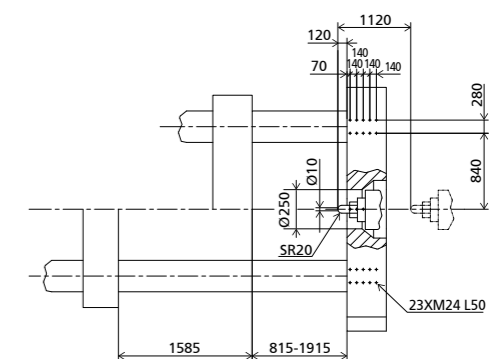
Logistics Specific Machine HA24000/40500 pegasus

		40500
INJECTION UNIT		
Screw diameter	mm	185
Screw L/D ratio	L/D	21.6
Injection volume (theoretical)	cm ³	27686
Injection weight (PS)	g	25194
Injection rate	g/s	1867
Injection pressure	MPa	151
Plasticizing rate (GPPS) ①	g/s	/
Plasticizing rate (HDPE) ②	g/s	320
Screw speed	rpm	0~70
CLAMPING UNIT		
Two-Platen		
Clamping force	kN	24000
Mold opening stroke	mm	2685/1585
Dist. between tie bars (H×V)	mm	1780×1580
Mold height max.	mm	1915
Mold height min.	mm	815
Ejector stroke	mm	500
Ejector force	kN	450
Mold opening stroke	mm	3500
Max. mold weight	t	50
OTHERS		
Pump motor power	kW	75+75+55
Heater power	kW	211
Machine dimension (L×W×H)	m	15.26×5.80×4.48
Machine weight	t	114
Hopper capacity	kg	400
Oil tank②	l	1680

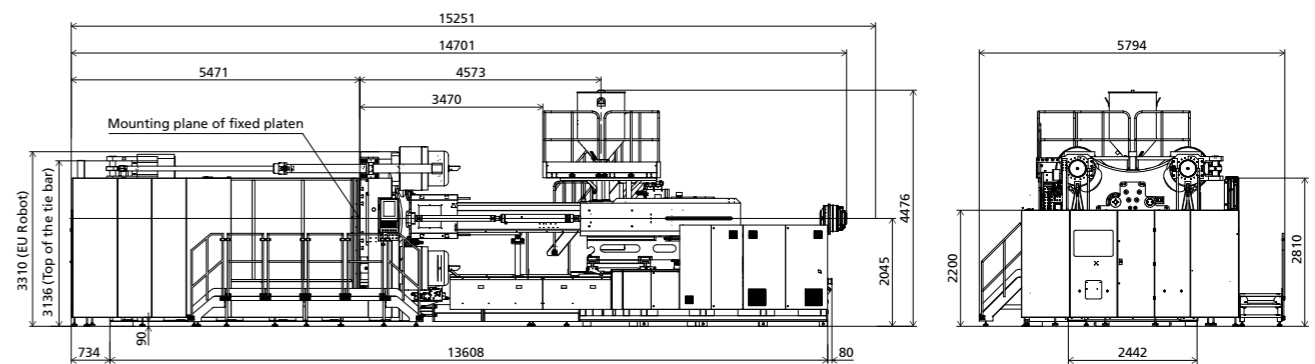
Moving platen dimensions



Platen side dimensions



Machine dimensions



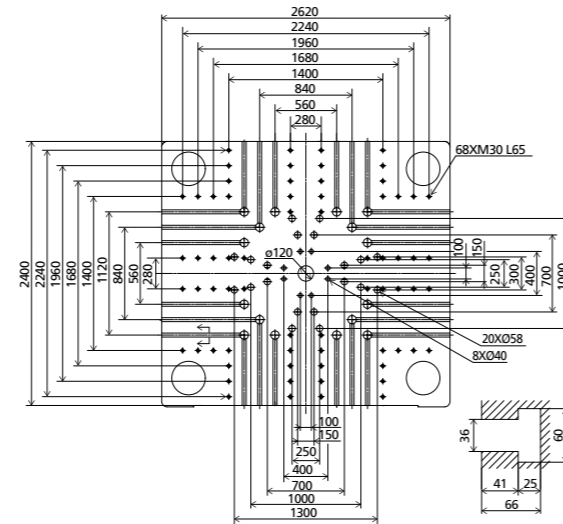
Note: ① Plasticizing rate(GPPS): GB standard,with application of GPPS plasticizing capacity of 3-zone screws
 ② Plasticizing rate(HDPE): Euromap 19,with application of HDPE plasticizing capacity of barrier screws

We reserve the right to make changes as a result of further technical advantages.

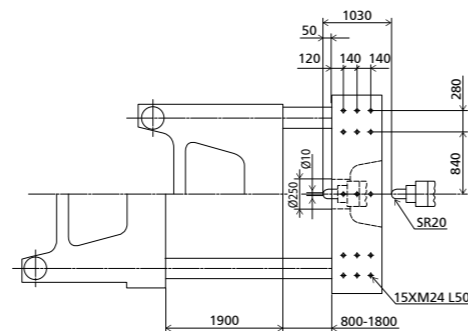
Logistics Specific Machine HA25000/42000 pegasus

		42000
INJECTION UNIT		
Screw diameter	mm	190
Screw L/D ratio	L/D	22.4
Injection volume (theoretical)	cm ³	29147
Injection weight (PS)	g	26523
Injection rate	g/s	1815
Injection pressure	MPa	143
Plasticizing rate (GPPS) ①	g/s	/
Plasticizing rate (HDPE) ②	g/s	305
Screw speed	rpm	0~65
CLAMPING UNIT		
Three-Platen		
Clamping force	kN	25000
Mold opening stroke	mm	1900
Dist. between tie bars (H×V)	mm	1850×1620
Mold height max.	mm	1800
Mold height min.	mm	800
Ejector stroke	mm	450
Ejector force	kN	430
OTHERS		
Pump motor power	kW	85×2+55
Heater power	kW	212
Machine dimension (L×W×H)	m	18.69×3.75×4.53
Machine weight	t	164
Hopper capacity	kg	400
Oil tank	l	2250

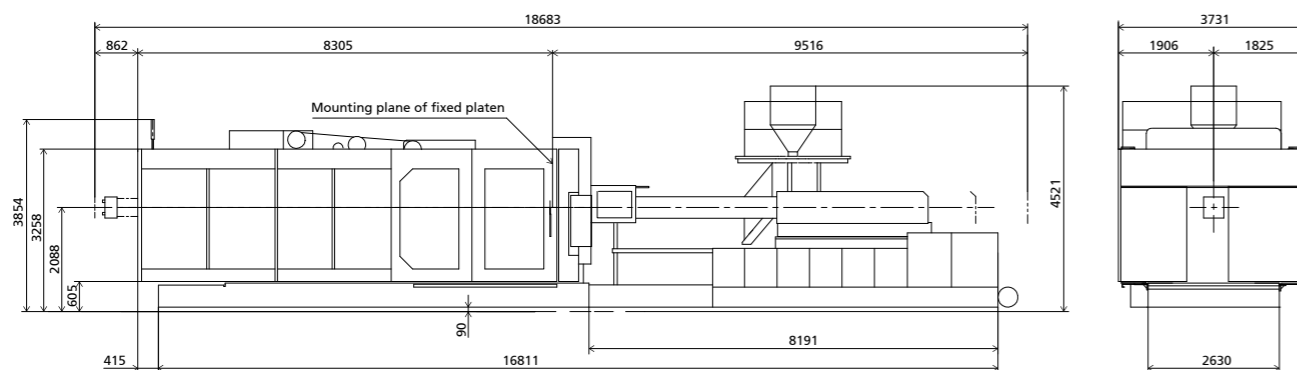
Moving platen dimensions



Platen side dimensions



Machine dimensions



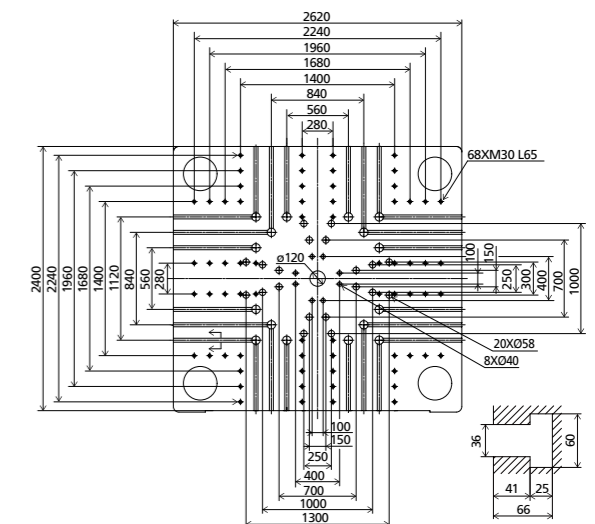
Note: ① Plasticizing rate(GPPS): GB standard,with application of GPPS plasticizing capacity of 3-zone screws
② Plasticizing rate(HDPE): Euromap 19,with application of HDPE plasticizing capacity of barrier screws

We reserve the right to make changes as a result of further technical advantages.

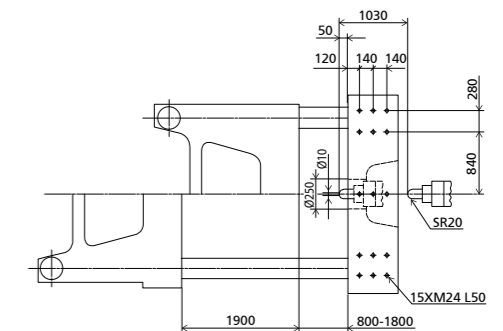
Logistics Specific Machine HA25000/48000 pegasus

		48000
INJECTION UNIT		
Screw diameter	mm	200
Screw L/D ratio	L/D	23
Injection volume (theoretical)	cm ³	35154
Injection weight (PS)	g	31991
Injection rate	g/s	2021
Injection pressure	MPa	151
Plasticizing rate (GPPS) ①	g/s	/
Plasticizing rate (HDPE) ②	g/s	330
Screw speed	rpm	0~60
CLAMPING UNIT		
Three-Platen		
Clamping force	kN	25000
Mold opening stroke	mm	1900
Dist. between tie bars (H×V)	mm	1850×1620
Mold height max.	mm	1800
Mold height min.	mm	800
Ejector stroke	mm	450
Ejector force	kN	430
OTHERS		
Pump motor power	kW	85×3
Heater power	kW	245.6
Machine dimension (L×W×H)	m	19.26×3.75×4.53
Machine weight	t	167
Hopper capacity	kg	400
Oil tank	l	2650

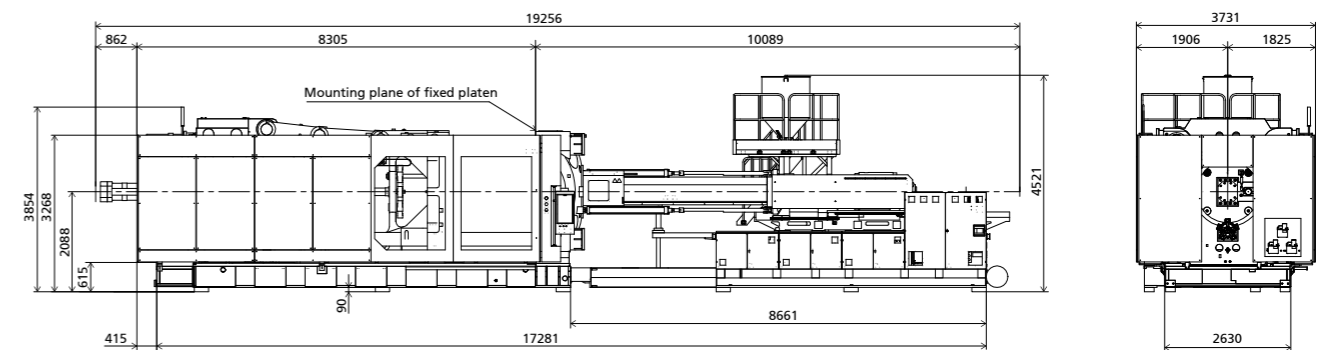
Moving platen dimensions



Platen side dimensions



Machine dimensions



Note: ① Plasticizing rate(GPPS): GB standard,with application of GPPS plasticizing capacity of 3-zone screws
② Plasticizing rate(HDPE): Euromap 19,with application of HDPE plasticizing capacity of barrier screws

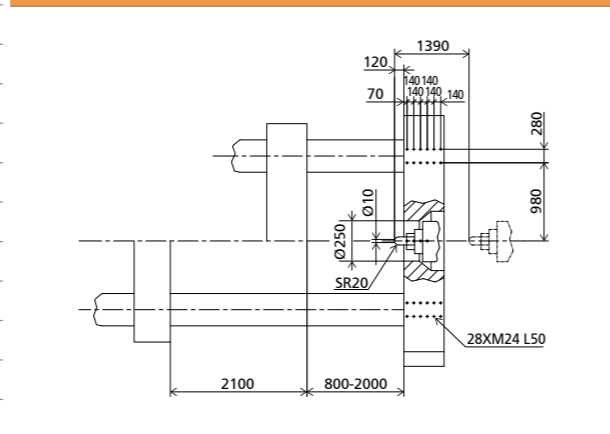
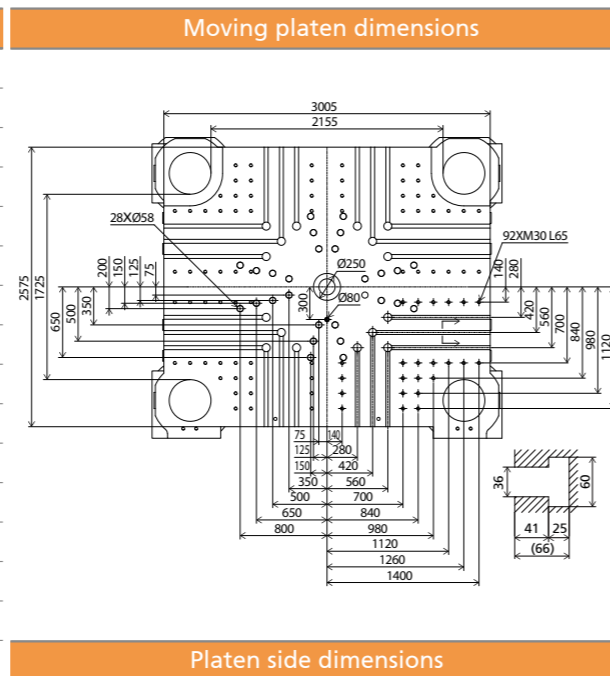
We reserve the right to make changes as a result of further technical advantages.

Logistics Specific Machine HA27000/62500 pegasus

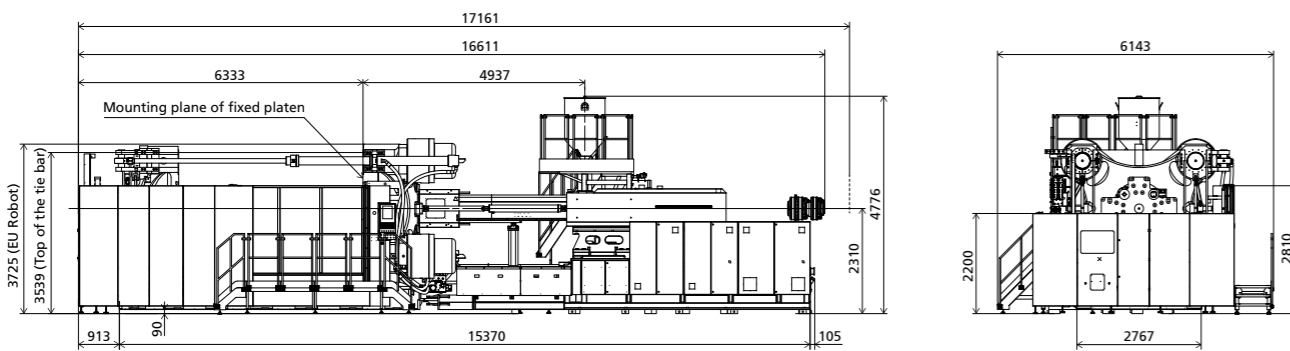
		62500	Moving platen dimensions
INJECTION UNIT			
Screw diameter	mm	220	

Logistics Specific Machine HA33000/62500 pegasus

		62500
INJECTION UNIT		
Screw diameter	mm	220
Screw L/D ratio	L/D	20.5
Injection volume (theoretical)	cm ³	45615
Injection weight (PS)	g	41510
Injection rate	g/s	2617
Injection pressure	MPa	135
Plasticizing rate (GPPS) ①	g/s	\
Plasticizing rate (HDPE) ②	g/s	370
Screw speed	rpm	0~53
CLAMPING UNIT		
		Two-Platen
Clamping force	kN	33000
Mold opening stroke	mm	3300/2100
Dist. between tie bars (H×V)	mm	2155×1725
Mold height max.	mm	2000
Mold height min.	mm	800
Ejector stroke	mm	550
Ejector force	kN	450
Mold opening stroke	mm	4100
Max. mold weight	t	66
OTHERS		
Pump motor power	kW	90+90+75
Heater power	kW	228
Machine dimension (L×W×H)	m	17.17×6.15×4.78
Machine weight	t	165
Hopper capacity	kg	400
Oil tank	l	2800



Machine dimensions

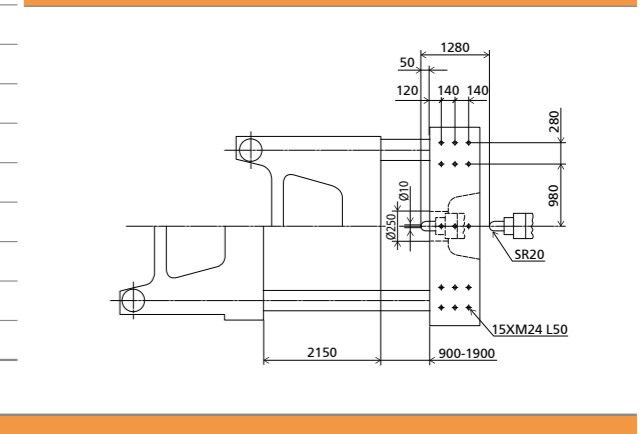
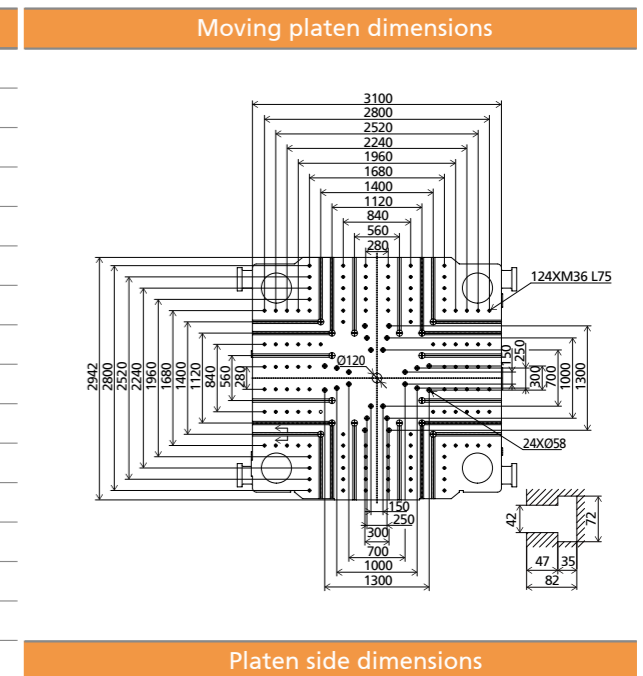


Note: ① Plasticizing rate(GPPS): GB standard,with application of GPPS plasticizing capacity of 3-zone screws
 ② Plasticizing rate(HDPE): Euromap 19,with application of HDPE plasticizing capacity of barrier screws

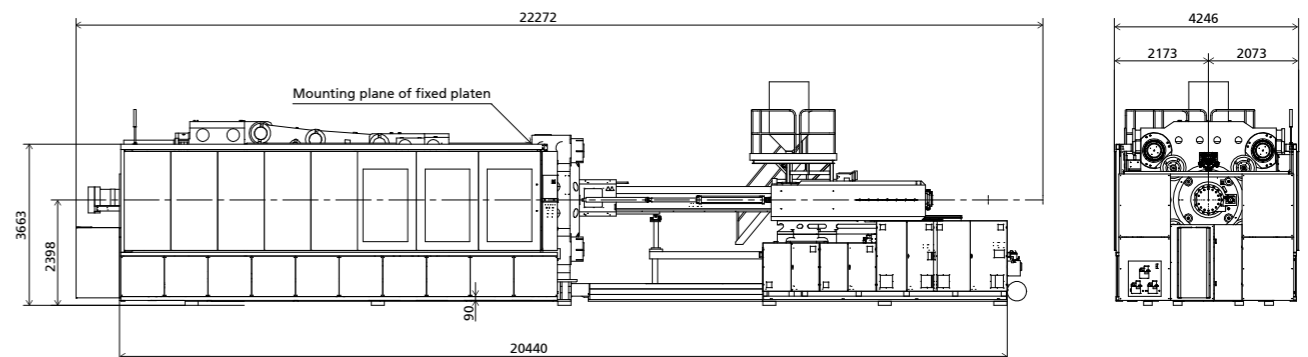
We reserve the right to make changes as a result of further technical advantages.

Logistics Specific Machine HA33500/62000 pegasus

		62000
INJECTION UNIT		
Screw diameter	mm	230
Screw L/D ratio	L/D	23
Injection volume (theoretical)	cm ³	52558
Injection weight (PS)	g	47827
Injection rate	g/s	2697
Injection pressure	MPa	141
Plasticizing rate (GPPS) ①	g/s	/
Plasticizing rate (HDPE) ②	g/s	360
Screw speed	rpm	0~45
CLAMPING UNIT		
		Three-Platen
Clamping force	kN	33500
Mold opening stroke	mm	2150
Dist. between tie bars (H×V)	mm	2160×1900
Mold height max.	mm	1900
Mold height min.	mm	900
Ejector stroke	mm	500
Ejector force	kN	550
OTHERS		
Pump motor power	kW	85×3+65
Heater power	kW	278
Machine dimension (L×W×H)	m	22.3×4.3×5.1
Machine weight	t	255
Hopper capacity	kg	400
Oil tank	l	3270



Machine dimensions



Note: ① Plasticizing rate(GPPS): GB standard,with application of GPPS plasticizing capacity of 3-zone screws
 ② Plasticizing rate(HDPE): Euromap 19,with application of HDPE plasticizing capacity of barrier screws

We reserve the right to make changes as a result of further technical advantages.

