

海天塑机集团有限公司
HAITIAN PLASTIC MACHINERY GROUP CO., LTD.

地址: 中国浙江宁波北仑小港海天路1688号
ADD: No.1688 Haitian Road, Xiaogang, Beilun, Ningbo, P.R, China.
邮编 Zipcode:315821
电话Tel: +86-574-86177005 86177242
传真Fax: +86-574-86177181 86221864
E-Mail: haitian@mail.haitian.com
www.haitian.com



HT 20220720-CV



PET industry application

HA/PET

PET packaging industry applications

PET products are widely used in the field of daily necessities and cosmetics. They have the characteristics of large weight, high cleanliness, strong sense of design and good transparency. Haitian PET molding scheme, while ensuring production efficiency, fully ensure the stability, precision and cleanliness of plastic products.

Main feature

- » High efficiency plasticizing components for PET packaging;
- » Efficient and stable heating system;
- » Closed loop temperature control at barrel feed opening;
- » Optimized ejection structure;
- » Optimized mold cooling system.



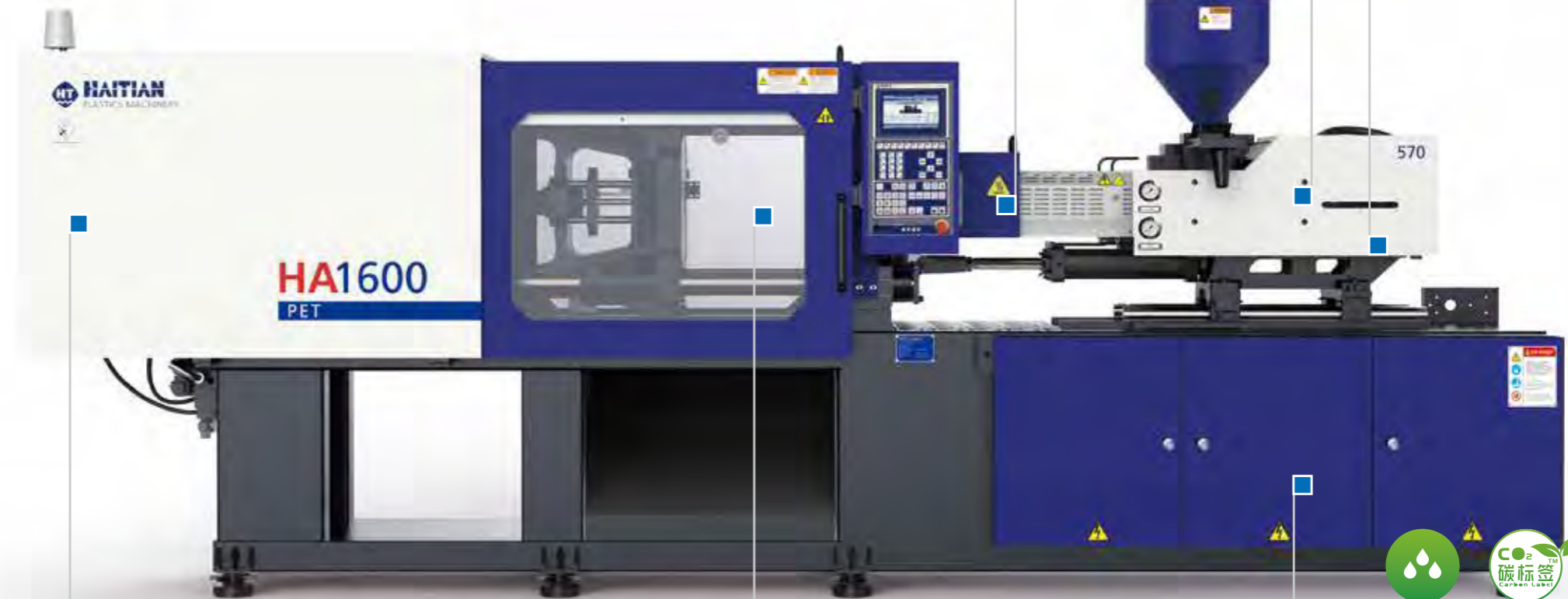
Special plasticizing components
Special PET high efficiency and high mixing chrome plating screw, improve the mixing effect and product stability



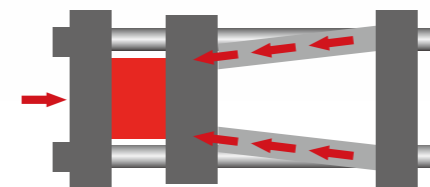
Full closed-loop injection
To achieve fine control of injection motion, high injection precision, low speed stability



Linear guide rails are used for injection movement
High rigidity injection unit, low friction coefficient, high operation precision, low energy consumption.



Intelligent algorithm for mold open/close
Easier operation, more accurate repeated positioning accuracy, faster dry cycle



High rigidity clamping unit
The platen pressure center design, uniform force, less deformation



High driving force servo system
New high driving force servo system, to achieve high dynamic, high response ability

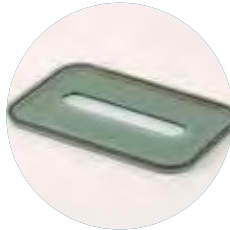


PET packaging industry applications



Application1

Machine: HA1600/570PET-B
 Cavity: 1
 Product size: 185*125*10
 Weight: 95g



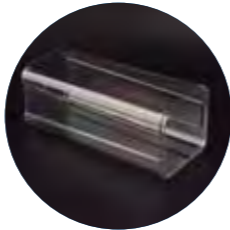
Application2

Machine: HA2000/1000PET-B
 Cavity: 1
 Product size: 300*135*135
 Weight: 301g



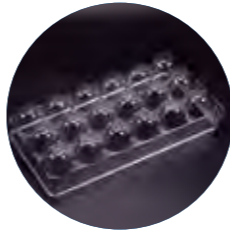
Application3

Machine: HA2600/1350PET-B
 Cavity: 1
 Product size: 110*110*240
 Weight: 251.3g



Application4

Machine: HA2600/1350PET-B
 Cavity: 1
 Product size: 310*150*65
 Weight: 320g



Application5

Machine: HA3800/3200PET-B
 Cavity: 1
 Product size: 330*240*145
 Weight: 676g



Application6

Machine: HA4700/4000PET-B
 Cavity: 1
 Product size: 380*300*180
 Weight: 1328g

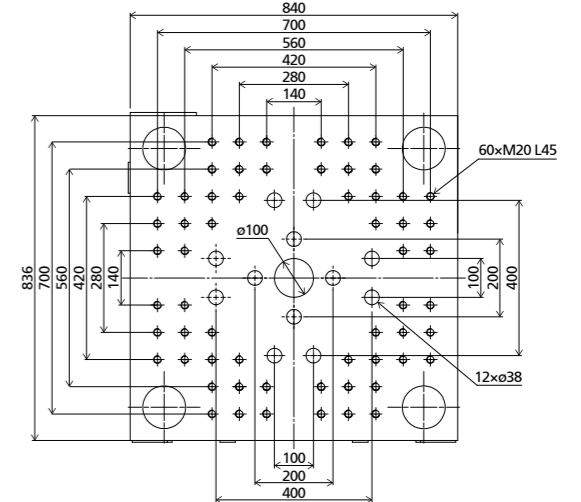
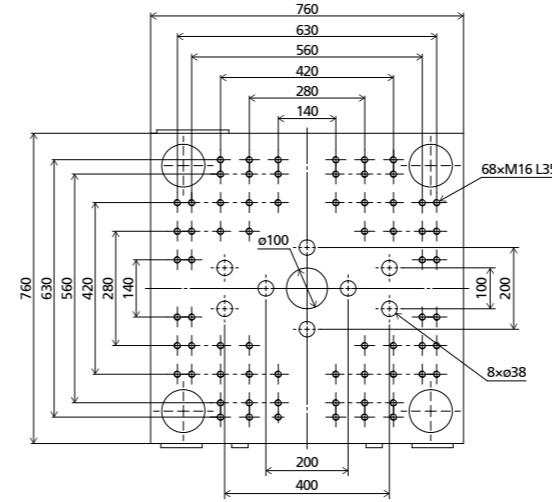
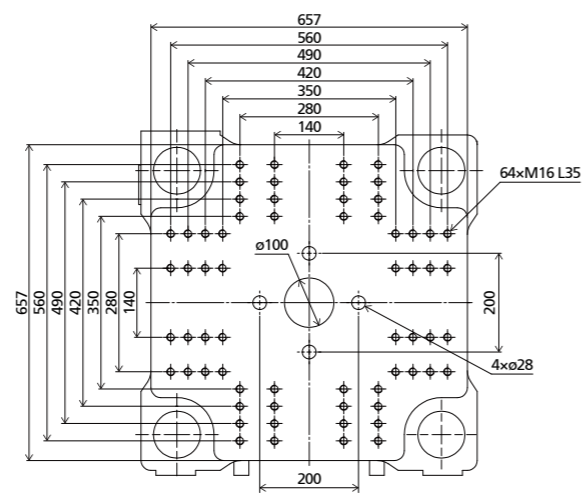


SPECIFICATIONS

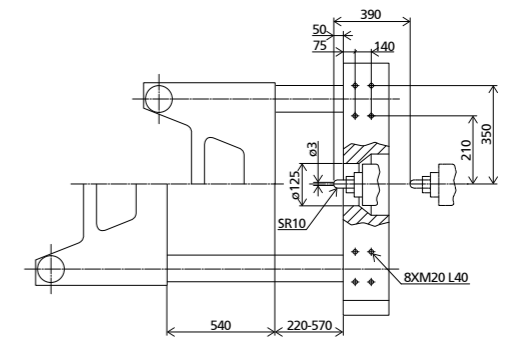
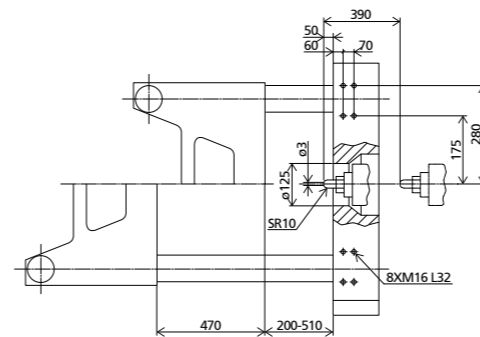
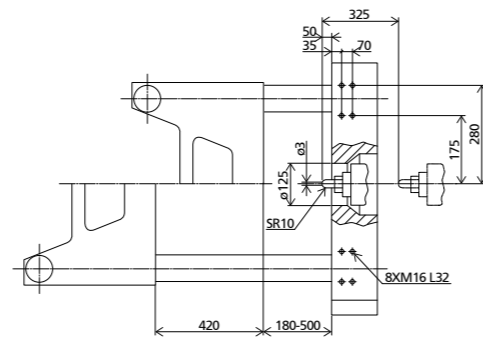
HA/PET-B (1600-2600 kN)

		HA1600/570PET-B	HA2000/1000PET-B	HA2600/1350PET-B
注射装置 INJECTION UNIT				
螺杆直径	Screw diameter	mm	45	55
长径比	Screw L/D Ratio	L/D	25	25
注射容量(理论)	Injection volume (theoretical)	cm ³	319	601
注射重量(PET)	Injection weight (PET)	g	367	691
注射速率(PET)	Injection rate (PET)	g/s	207	291
注射压力	Injection pressure	MPa	178	176
螺杆转速	Screw speed	rpm	0-160	0-195
合模装置 CLAMPING UNIT				
合模力	Clamping force	kN	1600	2000
移模行程	Mold opening stroke	mm	420	470
拉杆内距	Dist. between tie bars (HxV)	mm	470x470	510x510
最大模厚	Mold height max.	mm	500	510
最小模厚	Mold height min.	mm	180	200
顶出行程	Ejector stroke	mm	140	140
顶出力	Ejector tonnage	kN	60	80
其它 OTHERS				
油泵马达	Pump motor power	kW	22	32
电热功率	Heater power	kW	21.35	31.25
外形尺寸	Machine dimension (LxWxH)	m	5.16x1.31x1.91	5.93x1.37x1.99
机器重量	Machine weight	t	5	6.7
料斗容积(选配)	Hopper capacity(OP)	kg	50	50
油箱容积	Oil tank	l	215	295

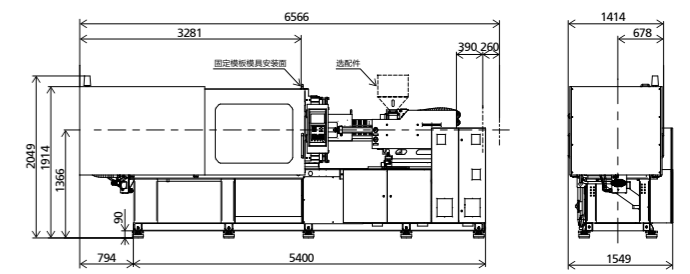
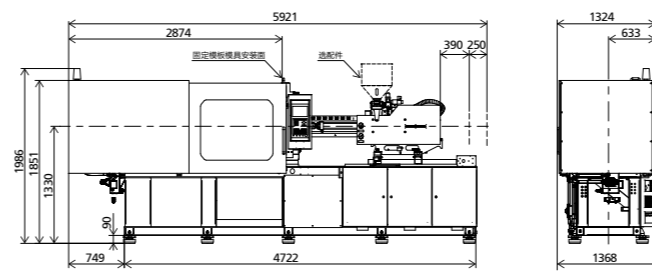
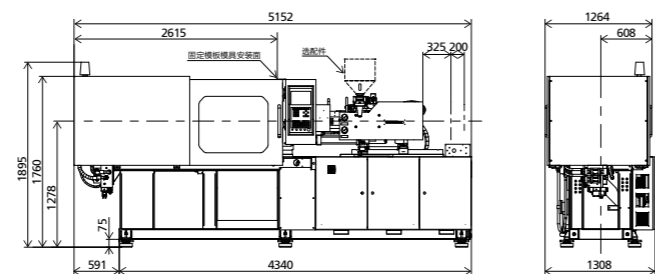
模板正面尺寸
Platen dimensions
Moving platen



模板侧面尺寸
Platen dimensions
Mounting hole for robot/sprue picker top view from fixed platen



外型尺寸
Machine dimensions



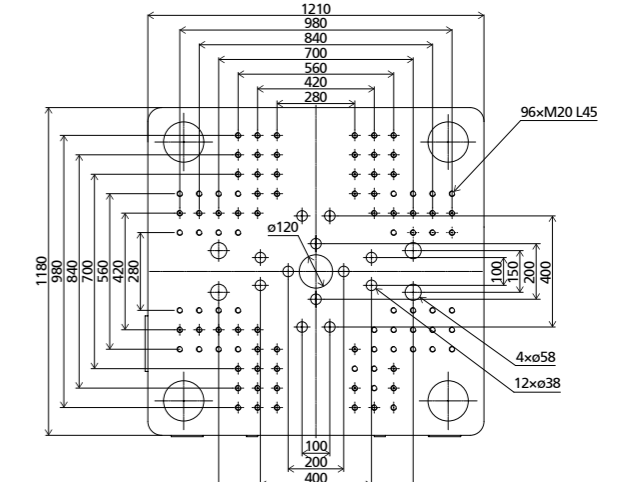
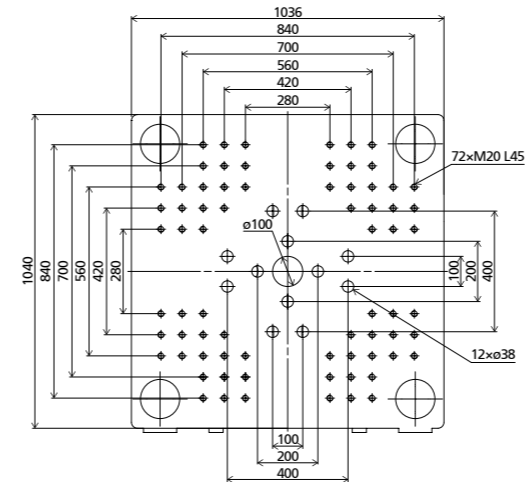
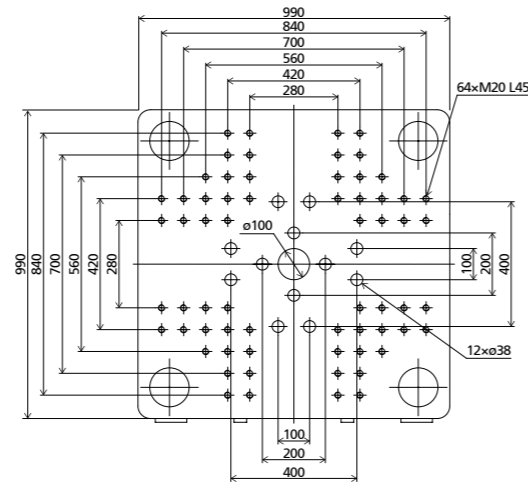
本公司保留修改技术参数的权力,恕不另行通知。
We reserve the right to make changes as a result of further technical advantages.

SPECIFICATIONS

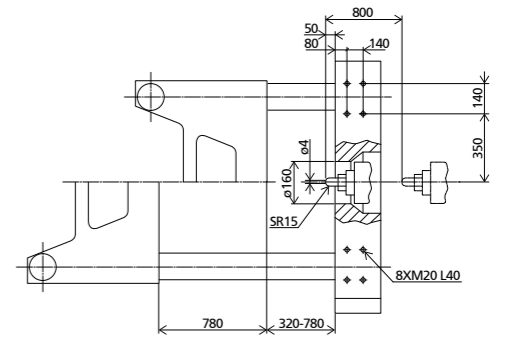
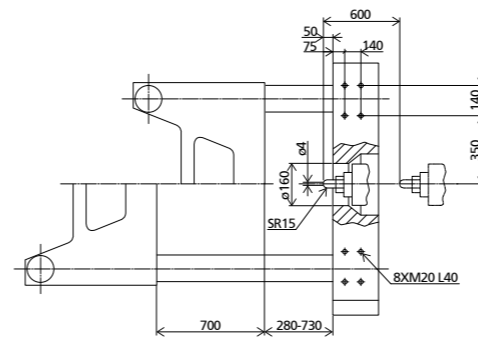
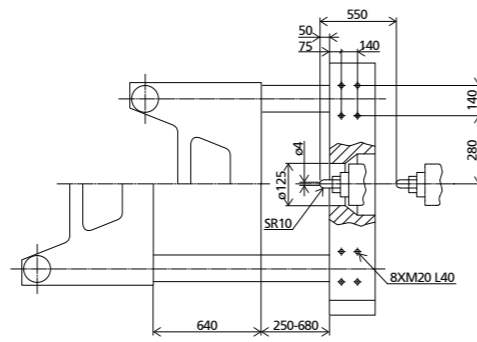
HA/PET-B (3200-4700 kN)

		HA3200/2250PET-B	HA3800/3200PET-B	HA4700/4000PET-B
注射装置		INJECTION UNIT		
螺杆直径	Screw diameter	70	80	85
长径比	Screw L/D Ratio	25	25	25
注射容量(理论)	Injection volume (theoretical)	1239	1859	2496
注射重量(PET)	Injection weight (PET)	1425	2138	2871
注射速率(PET)	Injection rate (PET)	463	580	649
注射压力	Injection pressure	176	174	176
螺杆转速	Screw speed	0-190	0-185	0-145
合模装置		CLAMPING UNIT		
合模力	Clamping force	3200	3800	4700
移模行程	Mold opening stroke	640	700	780
拉杆内距	Dist. between tie bars (HxV)	680x680	730x730	820x800
最大模厚	Mold height max.	680	730	780
最小模厚	Mold height min.	250	280	320
顶出行程	Ejector stroke	160	180	200
顶出力	Ejector tonnage	110	158	158
其它		OTHERS		
油泵马达	Pump motor power	55	65	70
电热功率	Heater power	55.9	63.1	77.5
外形尺寸	Machine dimension (LxWxH)	7.26x1.80x2.36	8.01x1.81x2.38	8.93x1.96x2.56
机器重量	Machine weight	13.5	15.7	19.8
料斗容积(选配)	Hopper capacity(OP)	50	50	100
油箱容积	Oil tank	510	630	780

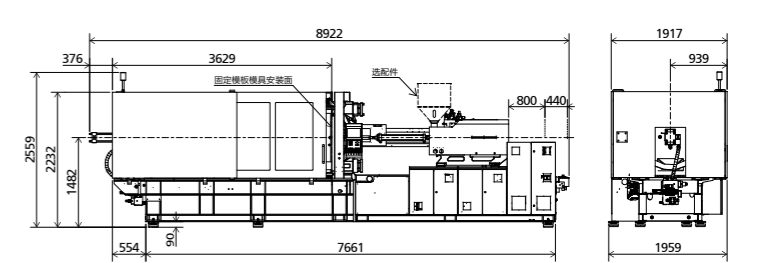
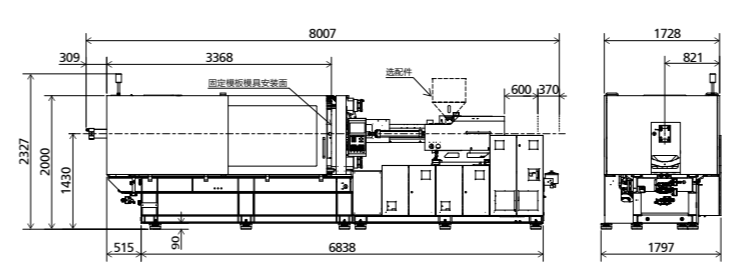
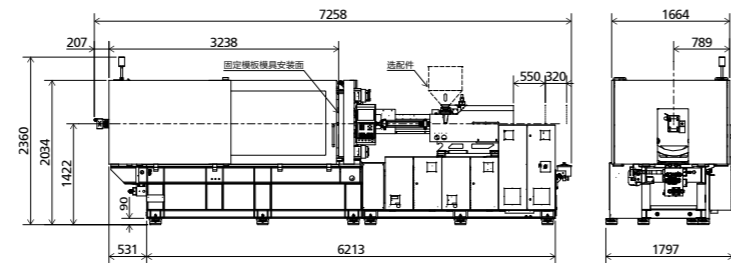
模板正面尺寸
Platen dimensions
Moving platen



模板侧面尺寸
Platen dimensions
Mounting hole for robot/sprue picker top view from fixed platen



外型尺寸
Machine dimensions



本公司保留修改技术参数的权力,恕不另行通知。
We reserve the right to make changes as a result of further technical advantages.

PET preform applications

PET preform injection molding machine continues the excellent quality of Haitian, combined with product characteristics and advanced technology, covering a whole series of models, adapt to the selection of various types of preform, has the characteristics of high efficiency and stability, energy saving and environmental protection, as well as a full set of auxiliary machinery to choose from, to provide customers with economic, efficient, stable overall solution.

Main feature

- » High efficiency plasticizing components for PET preform;
- » Efficient and stable heating system;
- » More suitable injection volume to meet the Weight requirements of different products;
- » Closed loop temperature control at barrel feed opening;
- » Optimized ejection structure;
- » Optimized mold cooling system.



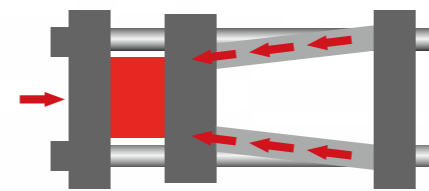
Special plasticizing components
Special high efficiency high mixing chrome screw for PET preform, in order to ensure low shear condition to achieve high efficiency and high quality plasticization, improve shrinkage problems, improve transparency.



linear guide rails are used for injection movement
High rigidity injection unit, low friction coefficient, high operation precision, low energy consumption.



Intelligent algorithm for mold open/close
Easier operation, more accurate repeated positioning accuracy, faster dry cycle



High rigidity clamping unit
The platen pressure center design, uniform force, less deformation



水性漆工艺 碳标签认证



High driving force servo system
New high driving force servo system, to achieve high dynamic, high response ability

PET preform applications



Application1

Machine: HA1600/570PET-C
 Cavity: 12
 Weight: 15g



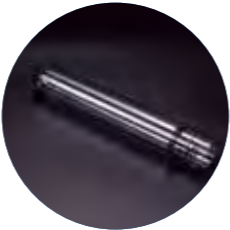
Application2

Machine: HA2000/1000PET-C
 Cavity: 16
 Weight: 17.2g



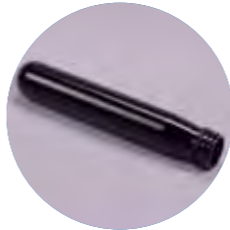
Application3

Machine: HA2500/1800PET-C
 Cavity: 12
 Weight: 48.6g



Application4

Machine: HA3000/225PET-C
 Cavity: 16
 Weight: 47.6g



Application5

Machine: HA3600/3200PET-C
 Cavity: 8
 Weight: 128.9g



Application6

Machine: HA4700/4000PET-C
 Cavity: 64
 Weight: 12.7g

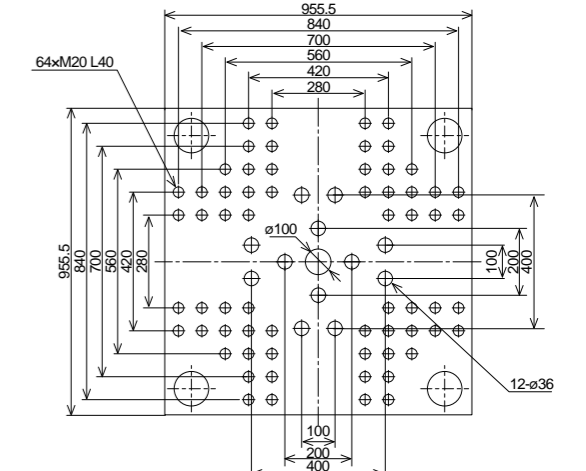
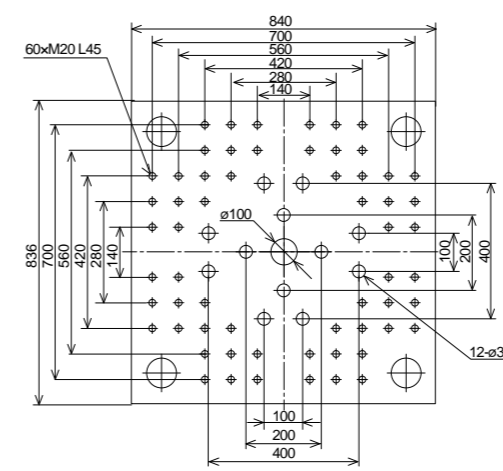
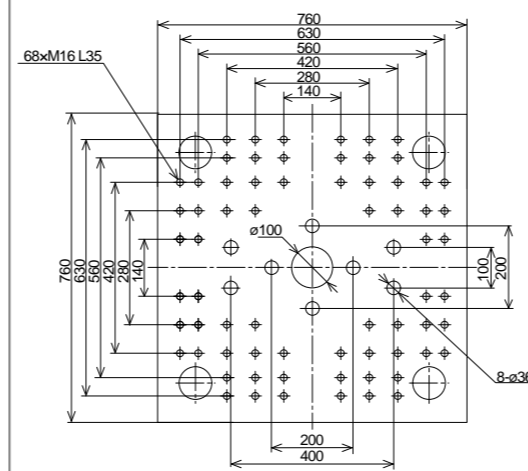
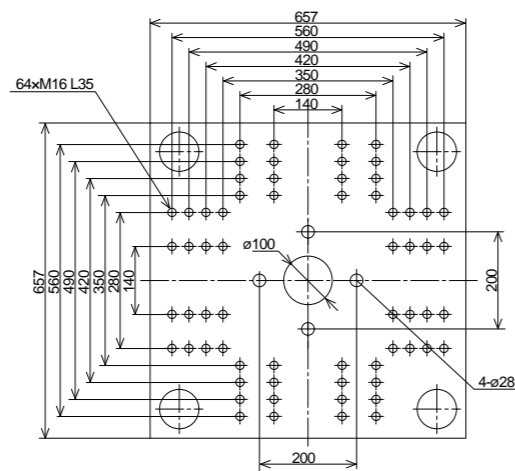


SPECIFICATIONS

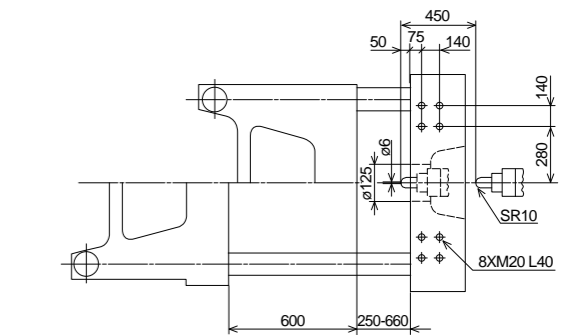
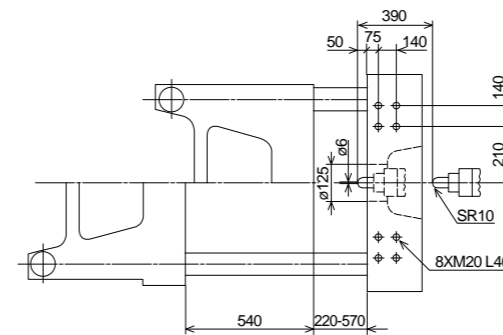
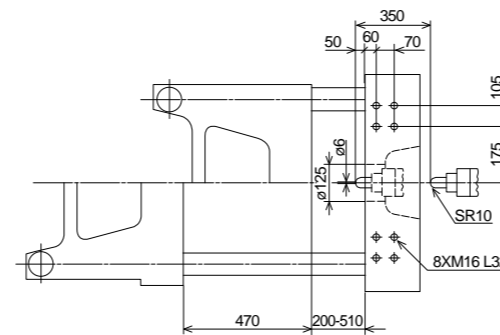
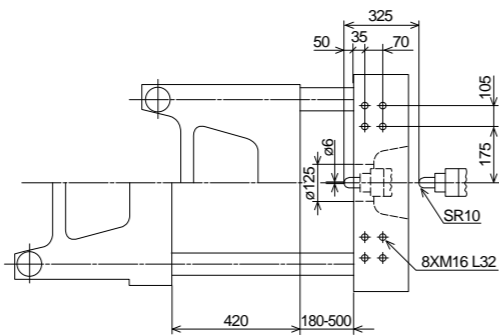
HA/PET-C (1600-3000 kN)

		HA1600/570PET-C	HA2000/1000PET-C	HA2500/1800PET-C	HA3000/2250PET-C
注射装置 INJECTION UNIT					
螺杆直径	Screw diameter	50	60	70	80
长径比	Screw L/D Ratio	25	25	25	25
注射容量(理论)	Injection volume (theoretical)	394	715	1154	1618
注射重量(PET)	Injection weight (PET)	473	858	1385	1942
注射速率(PET)	Injection rate (PET)	230	327	540	880
注射压力	Injection pressure	145	147	155	135
螺杆转速	Screw speed	167	149	163	163
合模装置 CLAMPING UNIT					
合模力	Clamping force	1600	2000	2500	3000
移模行程	Mold opening stroke	420	470	540	600
拉杆内距	Dist. between tie bars (HxV)	470x470	510x510	570x570	660x660
最大模厚	Mold height max.	500	510	570	660
最小模厚	Mold height min.	180	200	220	250
顶出行程	Ejector stroke	140	140	150	160
顶出力	Ejector tonnage	60	80	110	110
其它 OTHERS					
油泵马达	Pump motor power	18.5	30	45	65
电热功率	Heater power	21.4	31	43	56
外形尺寸	Machine dimension (LxWxH)	5.3x1.25x1.9	6.2x1.4x2.0	7.0x1.8x2.1	7.8x1.8x2.4
机器重量	Machine weight	4.9	6.6	8.1	11.7
料斗容积(选配)	Hopper capacity(OP)	50	50	50	50
油箱容积	Oil tank	185	280	420	610

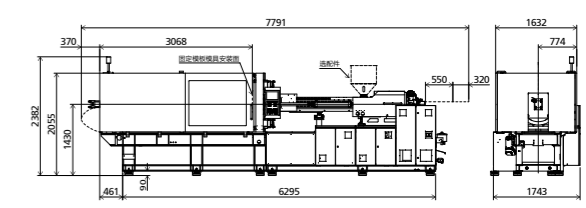
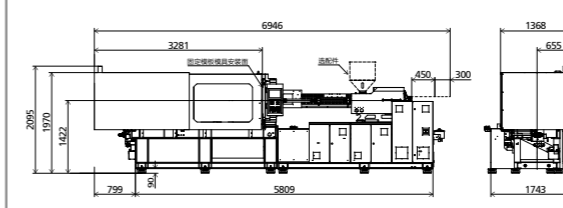
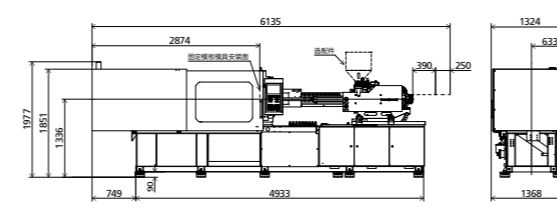
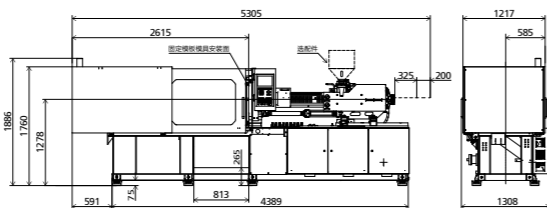
模板正面尺寸
Platen dimensions
Moving platen



模板侧面尺寸
Platen dimensions
Mounting hole for robot/sprue picker top view from fixed platen



外型尺寸
Machine dimensions

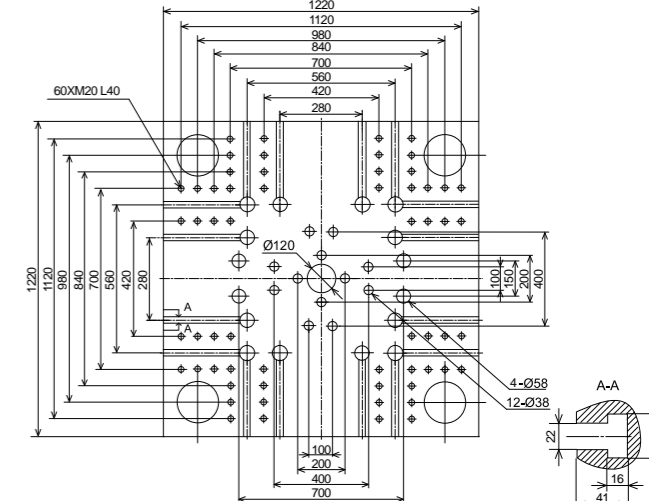
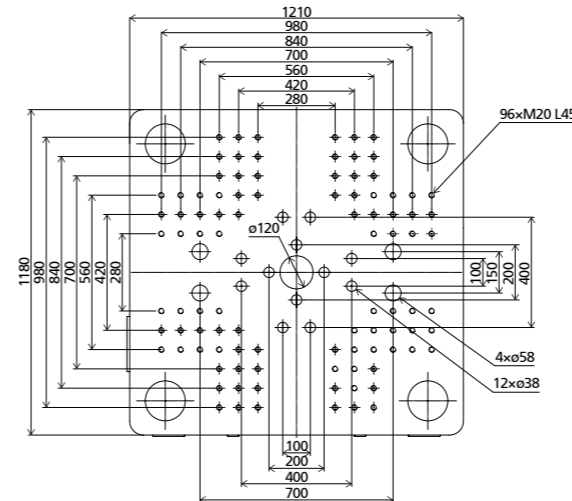
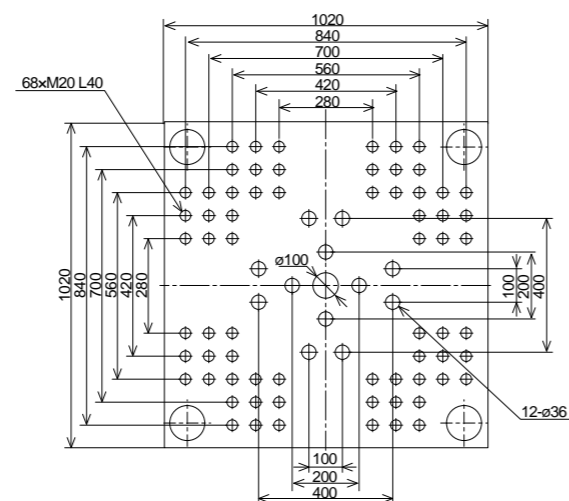


本公司保留修改技术参数的权力,恕不另行通知。
We reserve the right to make changes as a result of further technical advantages.

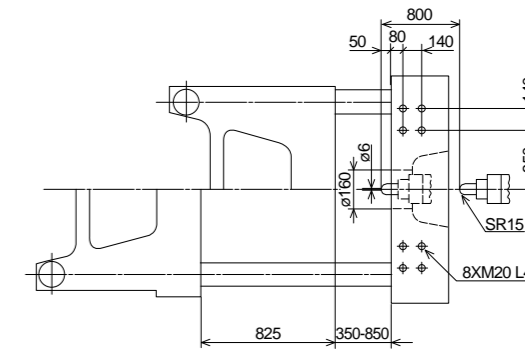
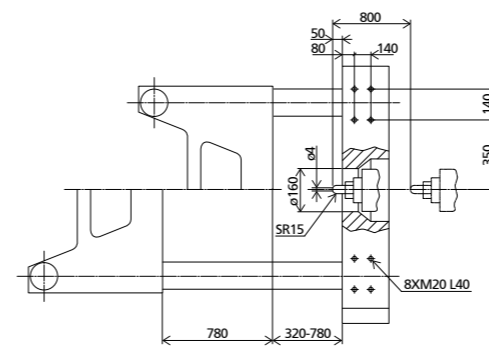
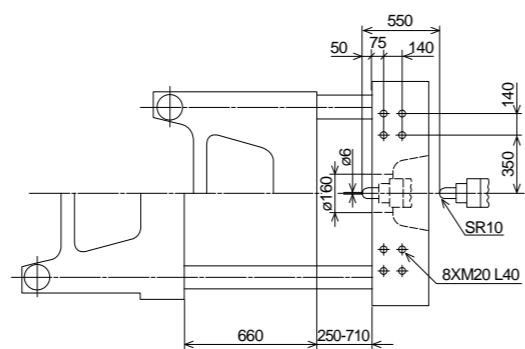
PET瓶胚类技术参数 HA/PET-C (3600-5300 kN)

		HA3600/3200PET-C	HA4700/4000PET-C	HA5300/4000PET-C
注射装置 INJECTION UNIT				
螺杆直径	Screw diameter	mm	90	100
长径比	Screw L/D Ratio	L/D	25	25
注射容量(理论)	Injection volume (theoretical)	cm ³	2353	3455
注射重量(PET)	Injection weight (PET)	g	2824	4146
注射速率(PET)	Injection rate (PET)	g/s	869	1336
注射压力	Injection pressure	MPa	137	127
螺杆转速	Screw speed	rpm	122	118
合模装置 CLAMPING UNIT				
合模力	Clamping force	kN	3600	4700
移模行程	Mold opening stroke	mm	660	780
拉杆内距	Dist. between tie bars (HxV)	mm	710x710	820x800
最大模厚	Mold height max.	mm	710	780
最小模厚	Mold height min.	mm	250	320
顶出行程	Ejector stroke	mm	160	200
顶出力	Ejector tonnage	kN	158	186
其它 OTHERS				
油泵马达	Pump motor power	kW	65	45+45
电热功率	Heater power	kW	63.1	77
外形尺寸	Machine dimension (LxWxH)	m	8.4x1.9x2.4	9.6x2.0x3.6
机器重量	Machine weight	t	15	18.9
料斗容积(选配)	Hopper capacity(OP)	kg	50	100
油箱容积	Oil tank	l	630	900

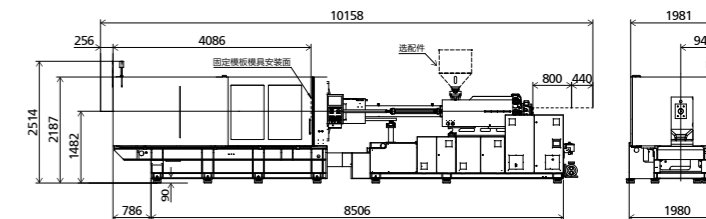
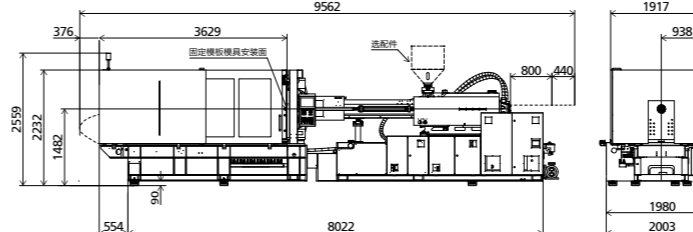
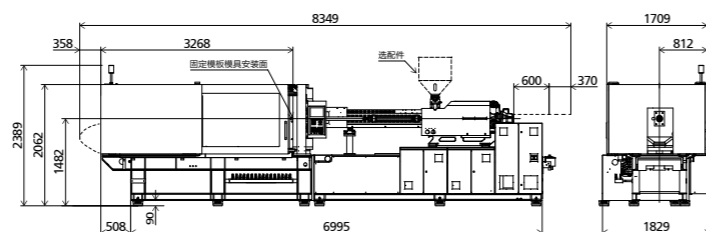
模板正面尺寸
Platen dimensions
Moving platen



模板侧面尺寸
Platen dimensions
Mounting hole for robot/sprue picker top view from fixed platen



外型尺寸
Machine dimensions



本公司保留修改技术参数的权力,恕不另行通知。
We reserve the right to make changes as a result of further technical advantages.

