

HAITIAN PLASTICS MACHINERY GROUP CO., LTD
No. 1688 Haitian Road, Xiaogang, Beilun, Ningbo, P. R. China.
+ 86-574-8617 7005 (China)
+ 86-574-8617 7242 (International)
haitian@mail.haitian.com
www.haitianpm.com

NINGBO HAITIAN HUAYUAN MACHINERY CO.,LTD.
Export Processing Zone, Ningbo 315800 China
+86-574-8617 7242
+86-574-8622 1864
haitian@mail.haitian.com
www.haitianpm.com



HAITIAN **MULTI** SERIES

JU Energy-saving servo injection molding machines
Specification



HT-20230302-IV



CONTENTS

Turntable multi-color machine with narrow mold platen	
JU7500M	4
JU10800M	5
JU12000M	10
JU14000M	11
JU16000M	16
JU18500M	20
JU21000M	22



JU / M Series ^M

Turntable multi-color machine with narrow mold platen
7,500-21,000 kN

JU7500M

Turntable multi-color machine with narrow mold platen

JU10800M

Turntable multi-color machine with narrow mold platen

SPECIFICATIONS
MACHINE TYPE

	JU7500M/2400-570						JU10800M/2400-720					
	2400			570			2400			720		
	A	B	C	A	B	C	A	B	C	A	B	C
CLAMPING UNIT												
Clamping force	7500						10800					
Mold opening stroke	600/1400						900/1900					
Dist. between tie bars (HxV)	1110×960						1260×1100					
Diameter of rotary platen	Ø1362						Ø1623					
Max. mold install diameter	Ø1530						Ø1750					
Bearing Capacity of Rotary Platen ①	5						7					
Mold height max.	1120						1360					
Mold height min.	320						360					
Ejector stroke ②	300						300					
Ejector force	110×2						110×2					
Nozzle center distance ③	630						710					
Distance between molds positing centers	630						710					
INJECTION UNIT												
Screw diameter	65	70	75	40	45	50	65	70	75	45	50	55
Screw L/D ratio	21.5	20	18.7	22.5	20	18	21.5	20	18.7	22.2	20	18.2
Injection volume (theoretical)	1068	1239	1423	251	318	393	1068	1239	1423	334	412	499
Injection weight (PS)	972	1127	1295	228	289	358	972	1127	1295	304	375	454
Injection rate (PS)	334	388	445	161	204	252	334	388	445	165	204	247
Plasticizing rate (GPPS) ④	52.0	59.7	67.6	19.4	25.8	32.4	52.0	59.7	67.6	25.1	31.7	38.8
Injection pressure	229	198	172	228	180	146	229	198	172	222	180	149
Screw speed	0~200			0~240			0~200			0~207		
OTHERS												
Pump motor power	55+30						55+30					
Heater power	32			12.4			32			16.3		
Machine dimension (LxWxH)	8.8×2.9×2.5						9.8×3.3×2.8					
Machine weight	32						50					
Hopper capacity	50			25			50			50		
Oil tank	850						950					

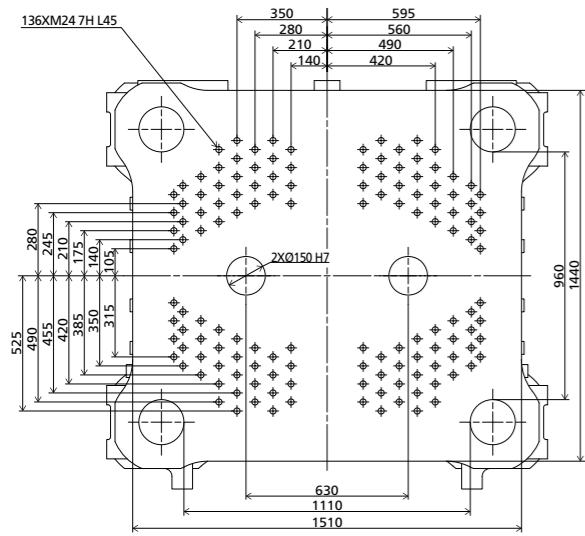
NOTE:

- ① Load bearing of rotary table: it is the data when the mold thickness at the rotary table side is 1 / 2 of the maximum mold thickness. If the mold thickness at the rotary table side exceeds 1 / 2 of the maximum mold thickness, the data will be reduced accordingly.
- ② The ejection stroke is the data when the ejector transition rod is installed.
- ③ The nozzle center distance is the same as the mold positioning center distance at the fixed mold side.
- ④ Plasticizing capacity (GPPS): GB standard, with application of GPPS plasticizing capacity of 3-zone screws.

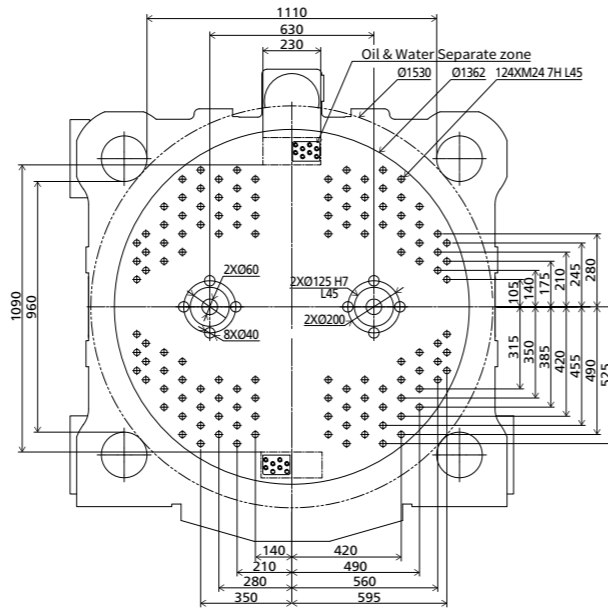
We reserve the right to make changes as a result of further technical advantages.

DIMENSIONS JU7500M

Platen dimensions fixed platen

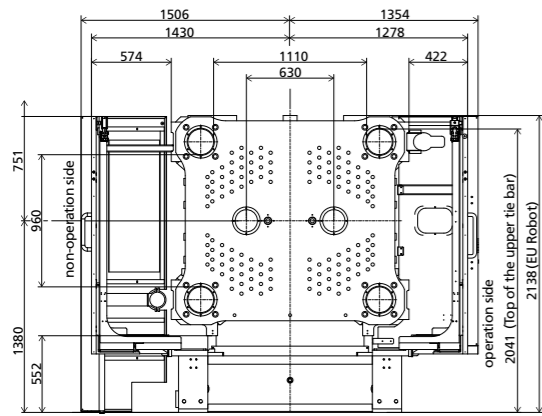


Front dimension of rotary table

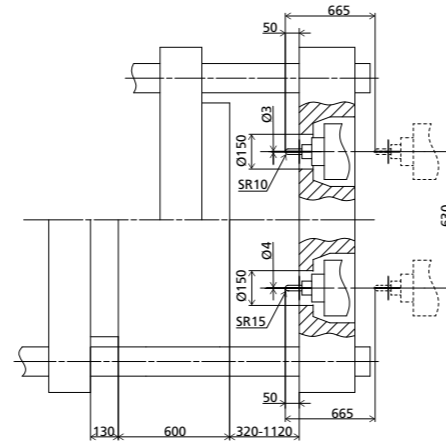


Note : M20 screw hole should be drilled on the ejector plate corresponding to the location of ejection hole, which is used to install the ejector transition rod.

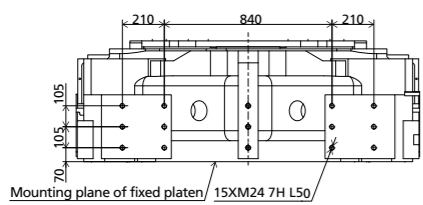
Robot mechanical interface



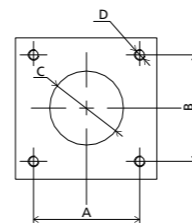
Side dimension drawing of platen



Robot top view fixed platen

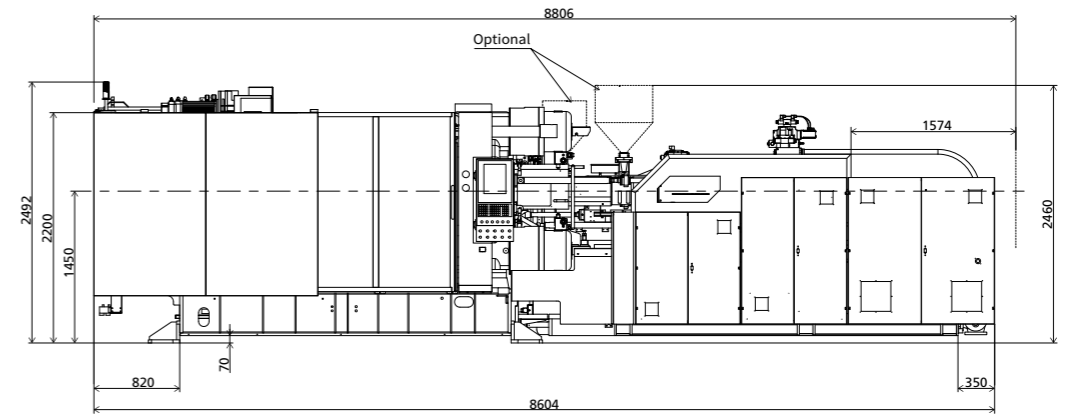


Platen dimension of hopper installation

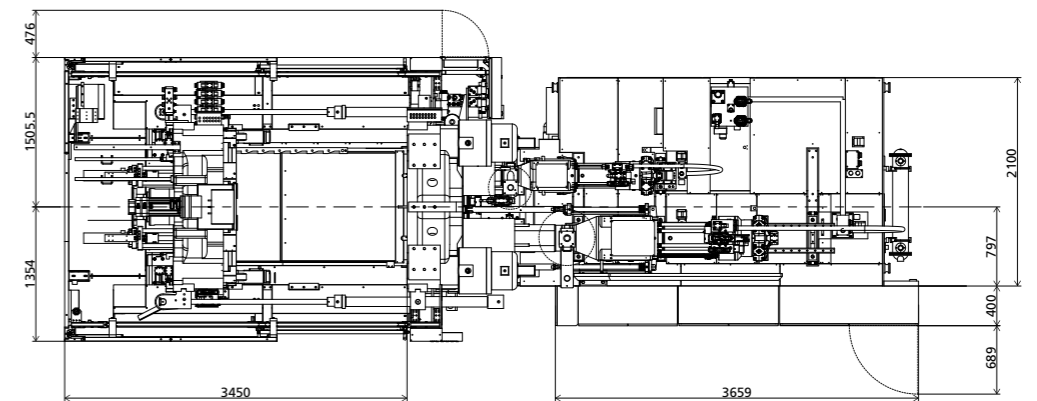


INJECTION UNIT	A	B	C	D
2400	115	115	Ø70	4xM10-7H L20
570	115	115	Ø70	4xM10-7H L20

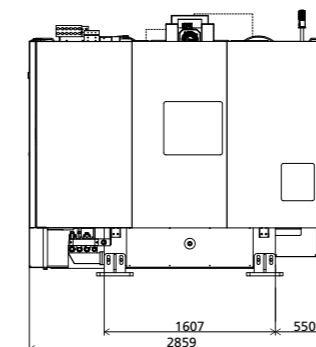
Front view



Top view



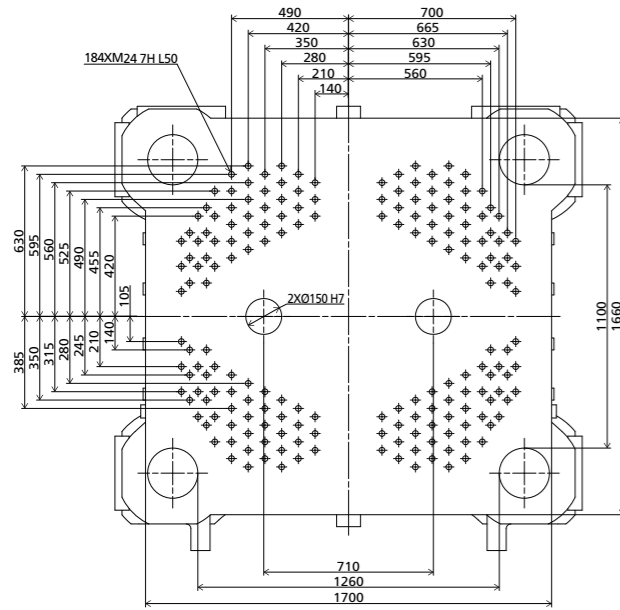
Side view



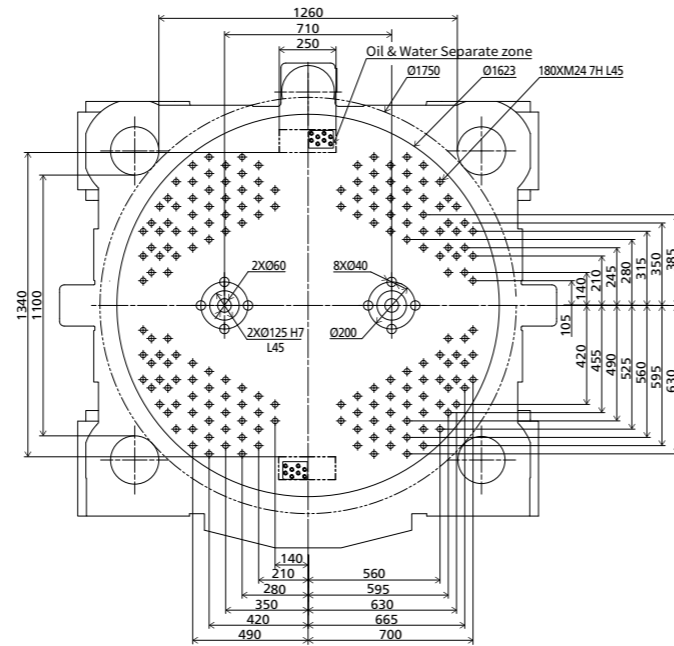
We reserve the right to make changes as a result of further technical advantages.

DIMENSIONS JU10800M

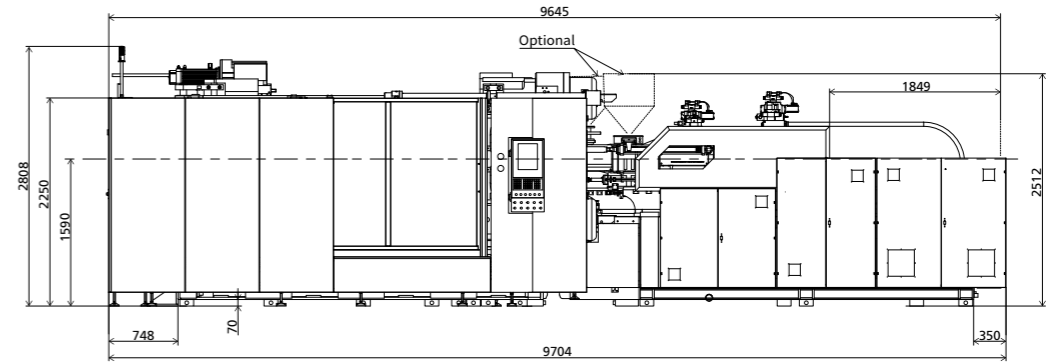
Platen dimensions fixed platen



Front dimension of rotary table



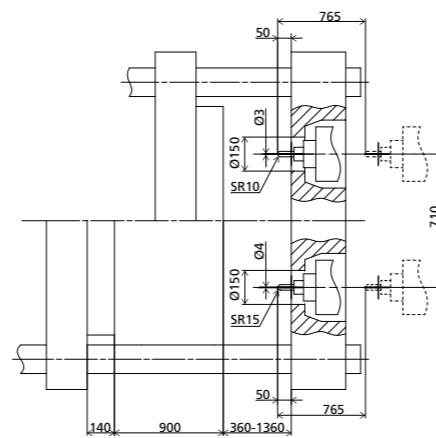
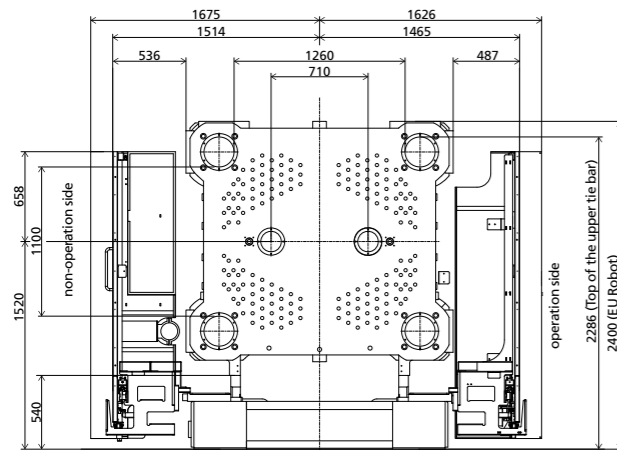
Front view



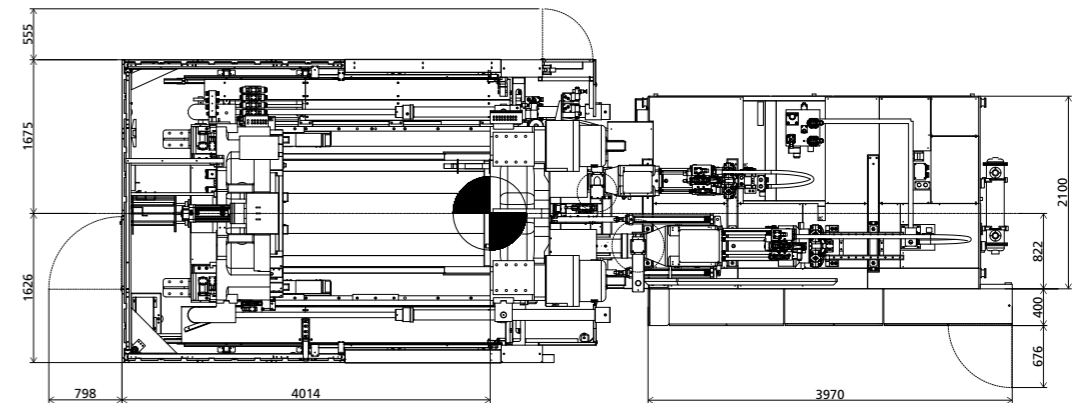
Note : M20 screw hole should be drilled on the ejector plate corresponding to the location of ejection hole, which is used to install the ejector transition rod.

Robot mechanical interface

Side dimension drawing of platen

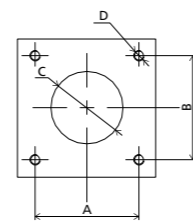
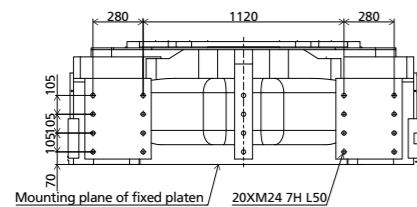


Top view



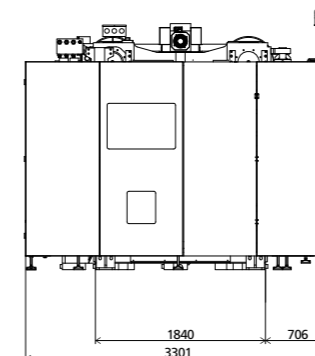
Robot top view fixed platen

Platen dimension of hopper installation



INJECTION UNIT	A	B	C	D
2400	115	115	Ø70	4xM10-7H L20
720	115	115	Ø70	4xM10-7H L20

Side view



We reserve the right to make changes as a result of further technical advantages.

JU12000M

Turntable multi-color machine with narrow mold platen

JU14000M

Turntable multi-color machine with narrow mold platen

SPECIFICATIONS
MACHINE TYPE

	JU12000M/2400-720						JU14000M/3050-1050						
CLAMPING UNIT													
Clamping force	kN	12000						14000					
Mold opening stroke	mm	1100/2050						1400/2350					
Dist. between tie bars (HxV)	mm	1300x1280						1460x1360					
Diameter of rotary platen	mm	Ø1803						Ø1966					
Max. mold install diameter	mm	Ø1910						Ø2090					
Bearing Capacity of Rotary Platen ①	t	9						11					
Mold height max.	mm	1410						1500					
Mold height min.	mm	460						550					
Ejector stroke ②	mm	300						300					
Ejector force	kN	196x2						196x2					
Nozzle center distance ③	mm	710						710					
Distance between molds positing centers	mm	510						510(类型一) 660(类型二)					
INJECTION UNIT													
		2400			720			3050			1050		
		A	B	C	A	B	C	A	B	C	A	B	C
Screw diameter	mm	65	70	75	45	50	55	70	80	84	50	55	60
Screw L/D ratio	L/D	21.5	20	18.7	22.2	20	18.2	22.9	20	19.1	22	20	18.3
Injection volume (theoretical)	cm ³	1068	1239	1423	334	412	499	1424	1860	2050	471	570	679
Injection weight (PS)	g	972	1127	1295	304	375	454	1296	1693	1866	429	519	618
Injection rate (PS)	g/s	334	388	445	278	343	415	355	464	523	268	325	387
Plasticizing rate (GPPS) ④	g/s	52.0	59.7	67.6	33.3	42.0	51.3	59.8	78.8	86.6	36.0	44.2	52.2
Injection pressure	MPa	229	198	172	222	180	149	216	165	146	231	191	161
Screw speed	rpm	0~200			0~280			0~183			0~230		
OTHERS													
Pump motor power	kW	75			45			75+45					
Heater power	kW	32			16.3			37			22		
Machine dimension (LxWxH)	m	10.5x3.4x2.8						11.2x3.6x3.2					
Machine weight	t	56						74					
Hopper capacity	kg	50			50			50			50		
Oil tank	l	1200						1200					

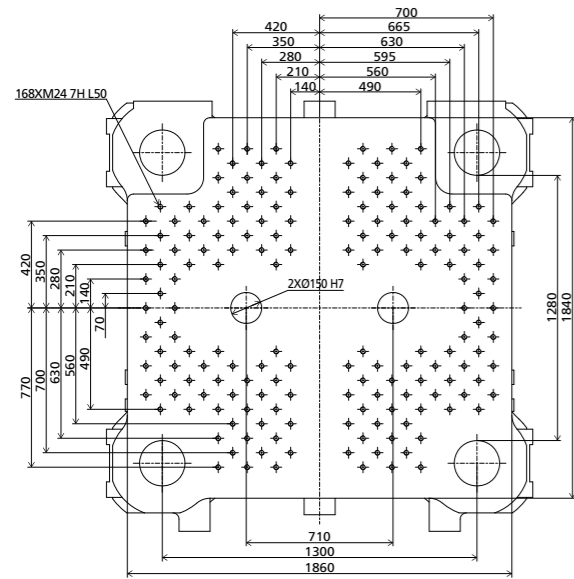
NOTE:

- ① Load bearing of rotary table: it is the data when the mold thickness at the rotary table side is 1 / 2 of the maximum mold thickness. If the mold thickness at the rotary table side exceeds 1 / 2 of the maximum mold thickness, the data will be reduced accordingly.
- ② The ejection stroke is the data when the ejector transition rod is installed.
- ③ The nozzle center distance is the same as the mold positioning center distance at the fixed mold side.
- ④ Plasticizing capacity (GPPS): GB standard, with application of GPPS plasticizing capacity of 3-zone screws.

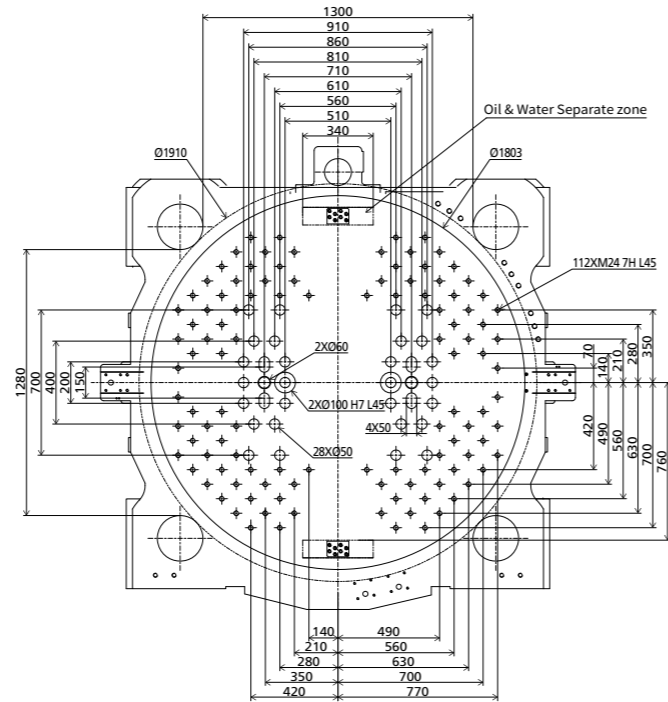
We reserve the right to make changes as a result of further technical advantages.

DIMENSIONS JU12000M

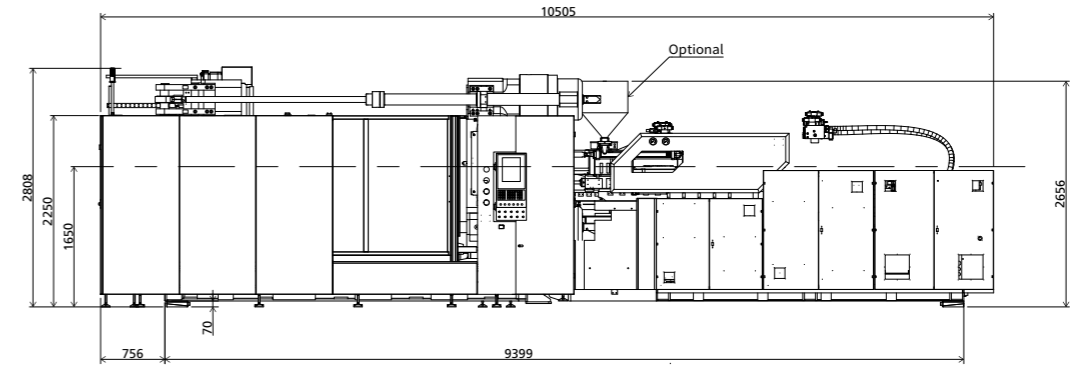
Platen dimensions fixed platen



Front dimension of rotary table

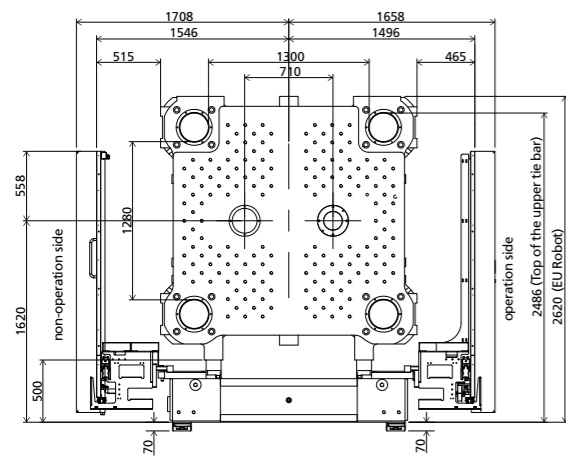


Front view

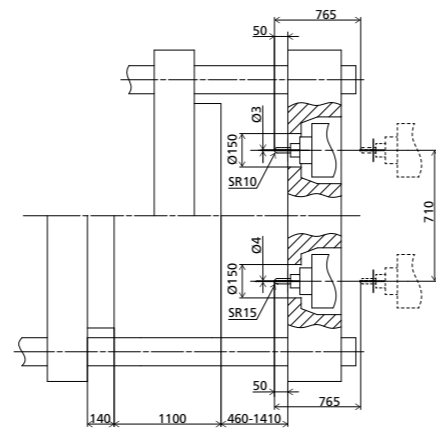


Note : M20 screw hole should be drilled on the ejector plate corresponding to the location of ejection hole, which is used to install the ejector transition rod.

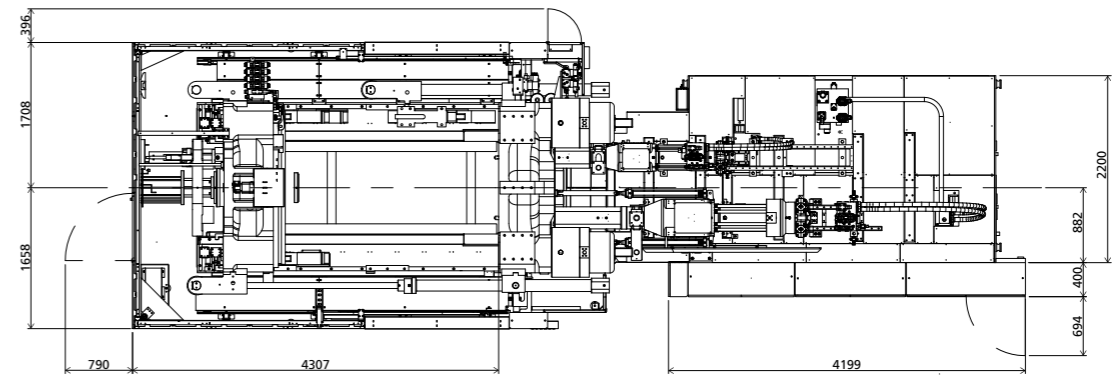
Robot mechanical interface



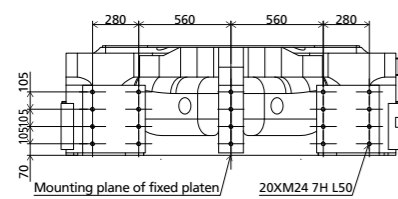
Side dimension drawing of platen



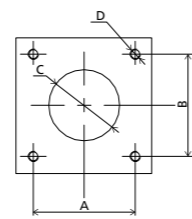
Top view



Robot top view fixed platen

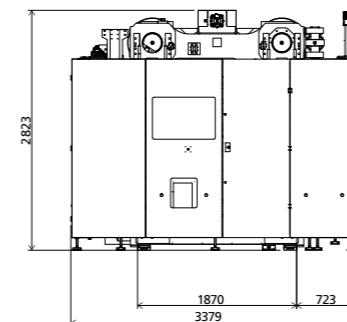


Platen dimension of hopper installation



INJECTION UNIT	A	B	C	D
2400	115	115	Ø70	4xM10-7H L20
720	115	115	Ø70	4xM10-7H L20

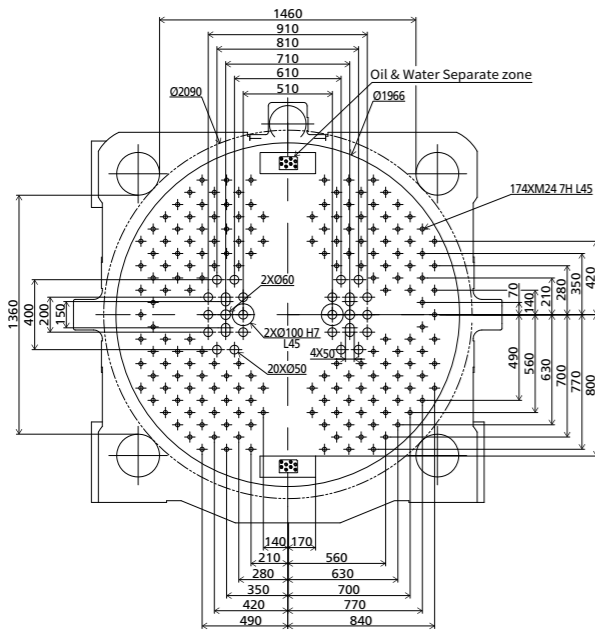
Side view



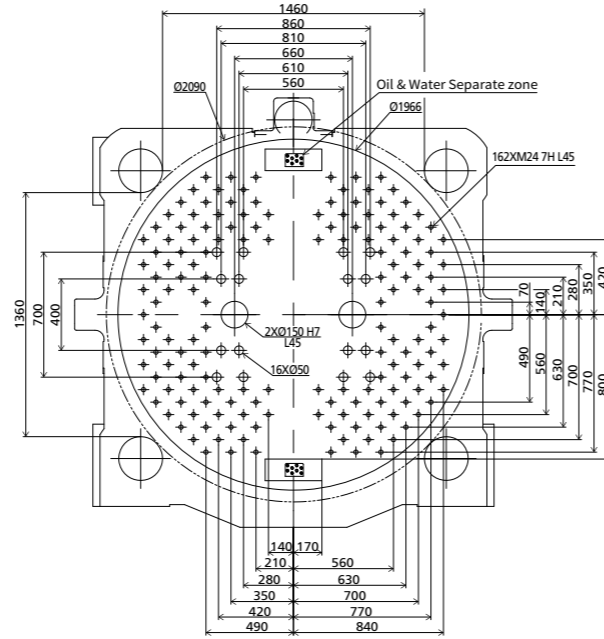
We reserve the right to make changes as a result of further technical advantages.

DIMENSIONS JU14000M

Front dimension of rotary table 1

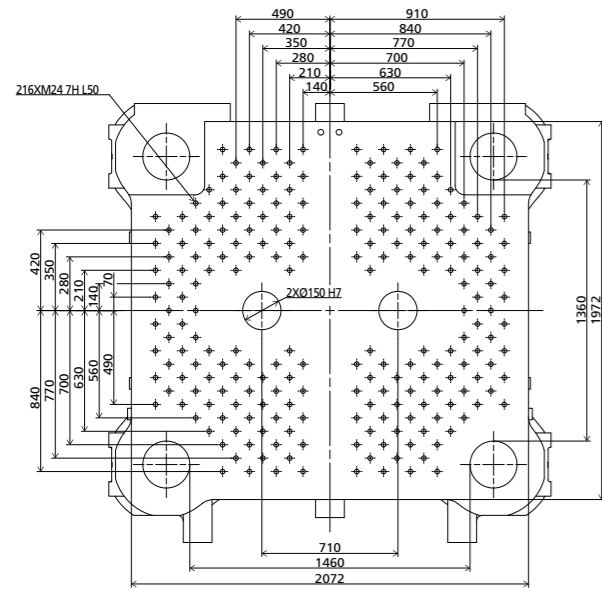


Front dimension of rotary table 2

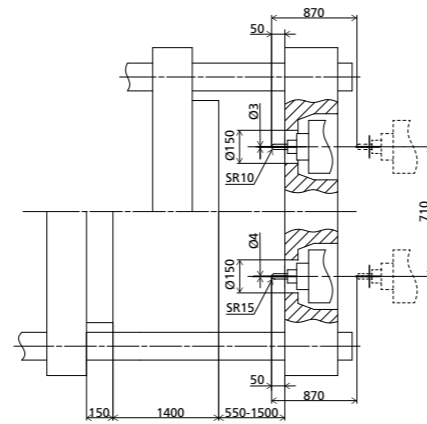


Note : M20 screw hole should be drilled on the ejector plate corresponding to the location of ejection hole, which is used to install the ejector transition rod.

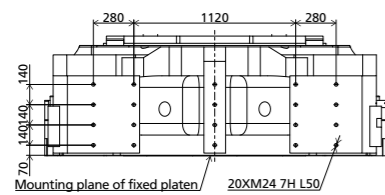
Platen dimensions fixed platen



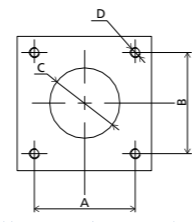
Side dimension drawing of platen



Robot top view fixed platen

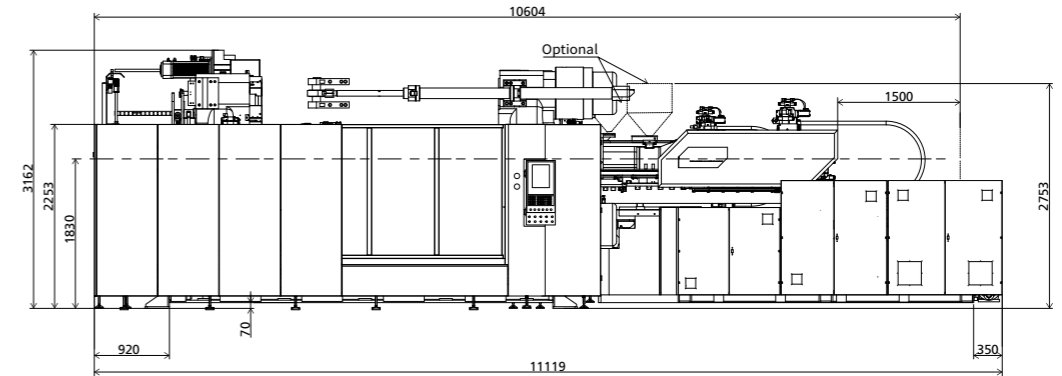


Platen dimension of hopper installation

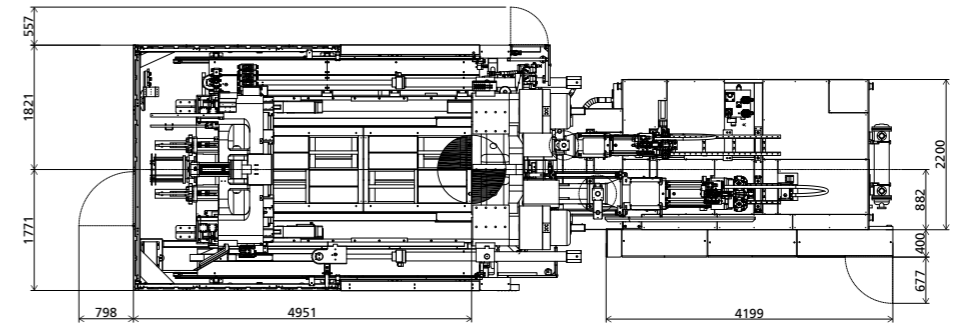


INJECTION UNIT	A	B	C	D
3050	115	115	Ø70	4xM10-7H L20
1050	115	115	Ø70	4xM10-7H L20

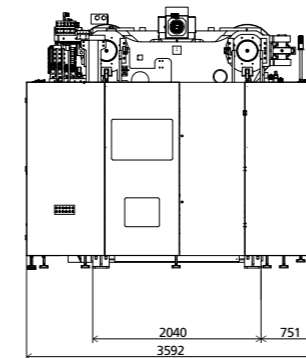
Front view



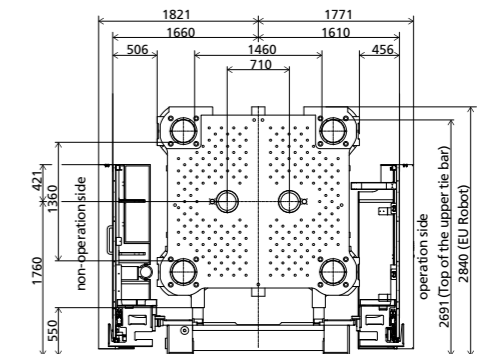
Top view



Side view



Robot mechanical interface



JU16000M

Turntable multi-color machine with narrow mold platen

JU18500M

Turntable multi-color machine with narrow mold platen

SPECIFICATIONS
MACHINE TYPE

	JU16000M/3050-1050						JU18500M/4650-1750					
CLAMPING UNIT												
Clamping force	16000						18500					
Mold opening stroke	1500/2550						1550/2600					
Dist. between tie bars (HxV)	1550x1450						1650x1550					
Diameter of rotary platen	Ø2090						Ø2185					
Max. mold install diameter	Ø2220						Ø2365					
Bearing Capacity of Rotary Platen ①	12						15					
Mold height max.	1600						1650					
Mold height min.	550						600					
Ejector stroke ②	300						300					
Ejector force	196x2						196x2					
Nozzle center distance ③	710						710					
Distance between molds positing centers	510						510					
INJECTION UNIT												
	3050			1050			4650			1750		
	A	B	C	A	B	C	A	B	C	A	B	C
Screw diameter	70	80	85	50	55	60	80	85	90	60	65	70
Screw L/D ratio	22.9	20	19.1	22	20	18.3	22	20.7	19.6	21.7	20	18.7
Injection volume (theoretical)	1424	1860	2100	471	570	679	2212	2497	2799	792	929	1068
Injection weight (PS)	1296	1693	1911	429	519	618	2013	2272	2547	721	845	981
Injection rate (PS)	403	527	595	331	401	477	412	465	522	345	405	469
Plasticizing rate (GPPS) ④	59.8	78.8	86.6	36	44.2	52.2	64.2	70.9	80.8	51.1	56.7	64.4
Injection pressure	216	165	146	231	191	161	211	187	167	222	189	163
Screw speed	0~183			0~230			0~145			0~225		
OTHERS												
Pump motor power	81.5+75						81.5+75					
Heater power	37			22			48			33		
Machine dimension (LxWxH)	11.4x3.8x3.4						12.3x4.2x3.46					
Machine weight	81						99					
Hopper capacity	50			50			100			50		
Oil tank	1200						1550					

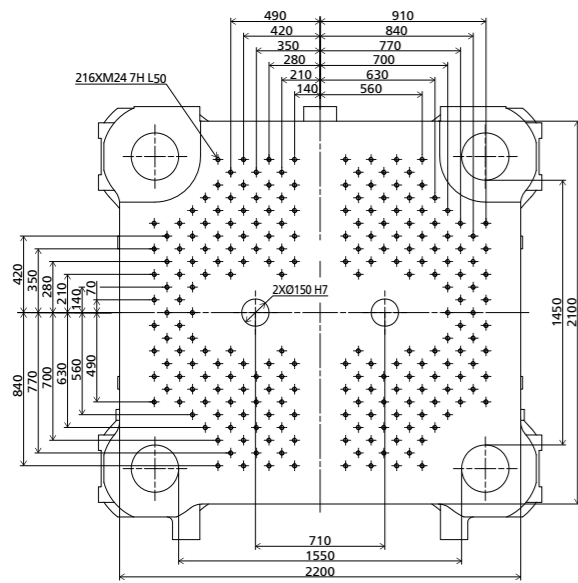
NOTE:

- ① Load bearing of rotary table: it is the data when the mold thickness at the rotary table side is 1 / 2 of the maximum mold thickness. If the mold thickness at the rotary table side exceeds 1 / 2 of the maximum mold thickness, the data will be reduced accordingly.
- ② The ejection stroke is the data when the ejector transition rod is installed.
- ③ The nozzle center distance is the same as the mold positioning center distance at the fixed mold side.
- ④ Plasticizing capacity (GPPS): GB standard, with application of GPPS plasticizing capacity of 3-zone screws.

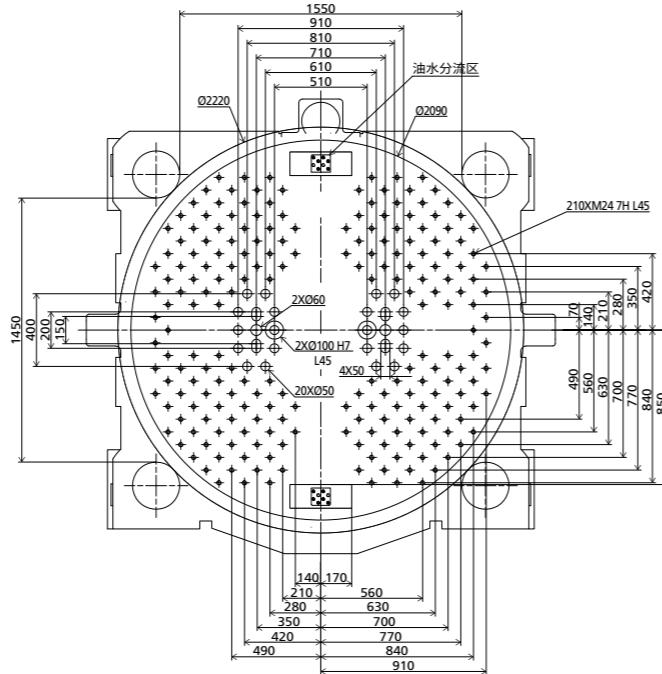
We reserve the right to make changes as a result of further technical advantages.

DIMENSIONS JU16000M

Platen dimensions fixed platen

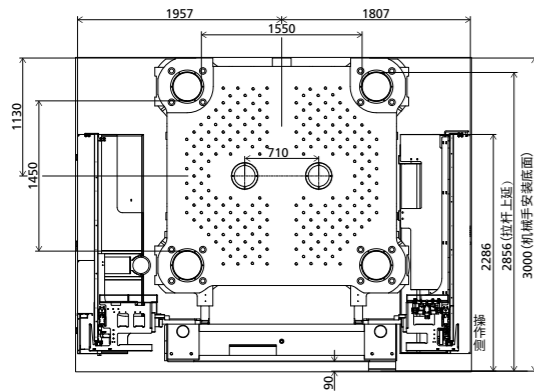


Front dimension of rotary table

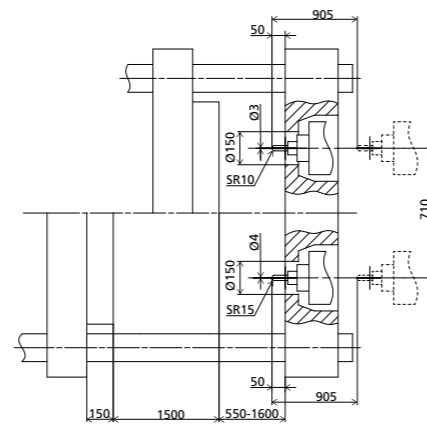


Note : M20 screw hole should be drilled on the ejector plate corresponding to the location of ejection hole, which is used to install the ejector transition rod.

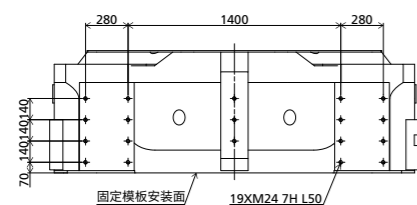
Robot mechanical interface



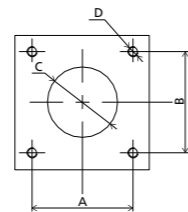
Side dimension drawing of platen



Robot top view fixed platen

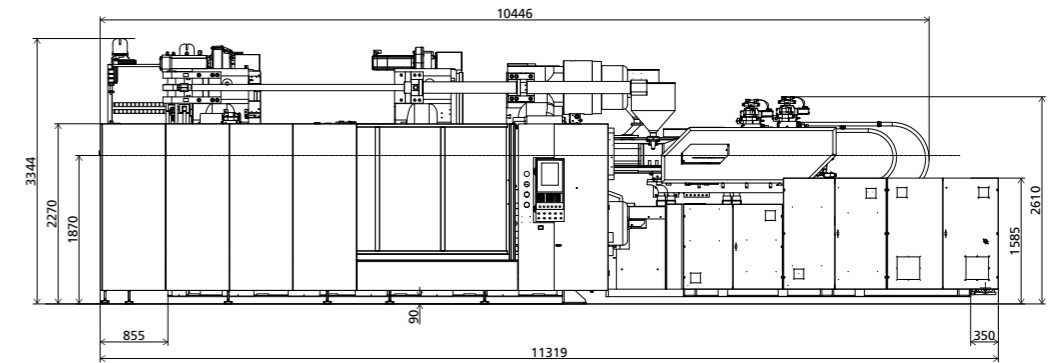


Platen dimension of hopper installation

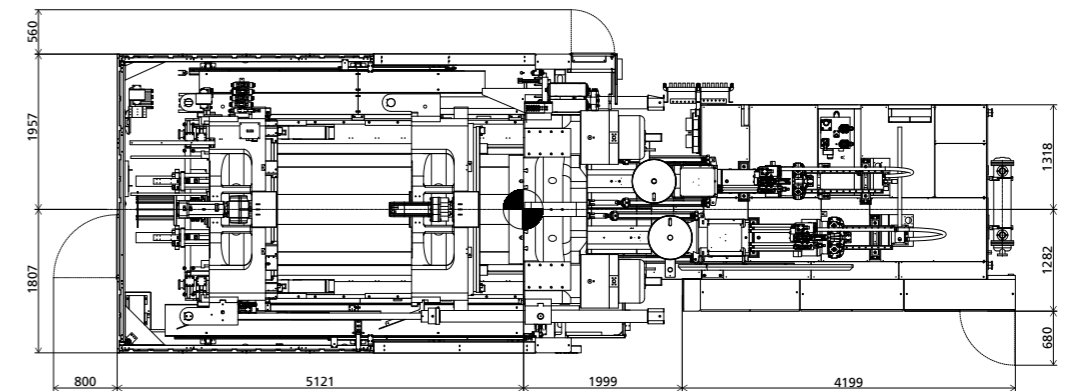


INJECTION UNIT	A	B	C	D
3050	115	115	Ø70	4xM10-7H L20
1050	115	115	Ø70	4xM10-7H L20

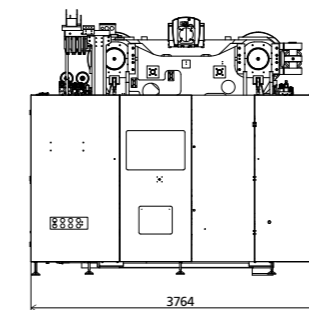
Front view



Top view



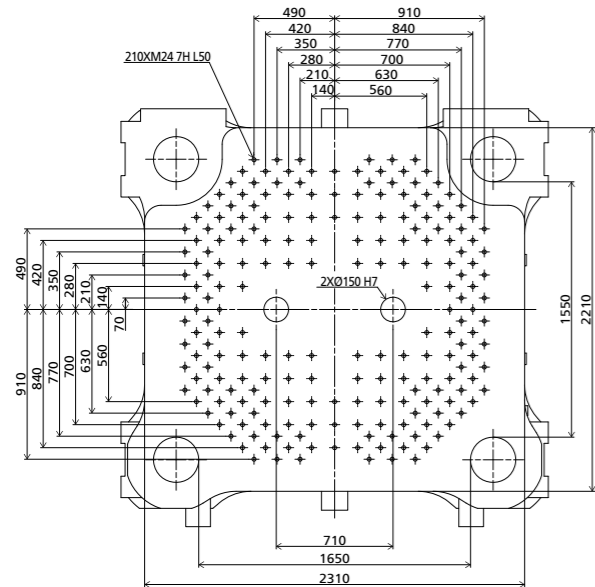
Side view



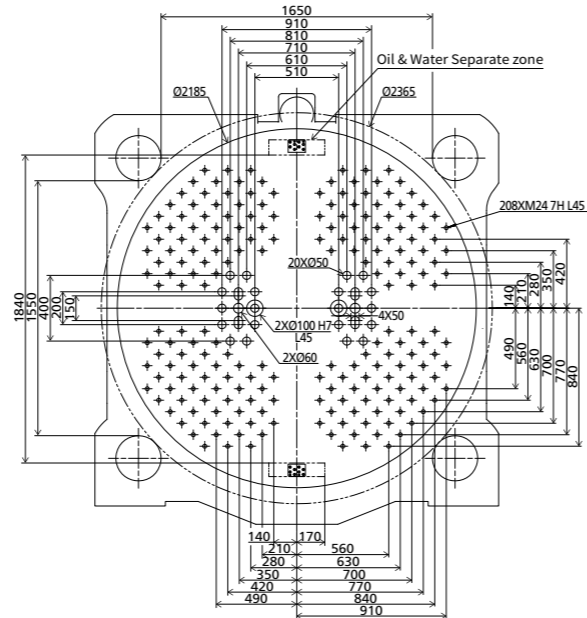
We reserve the right to make changes as a result of further technical advantages.

DIMENSIONS JU18500M

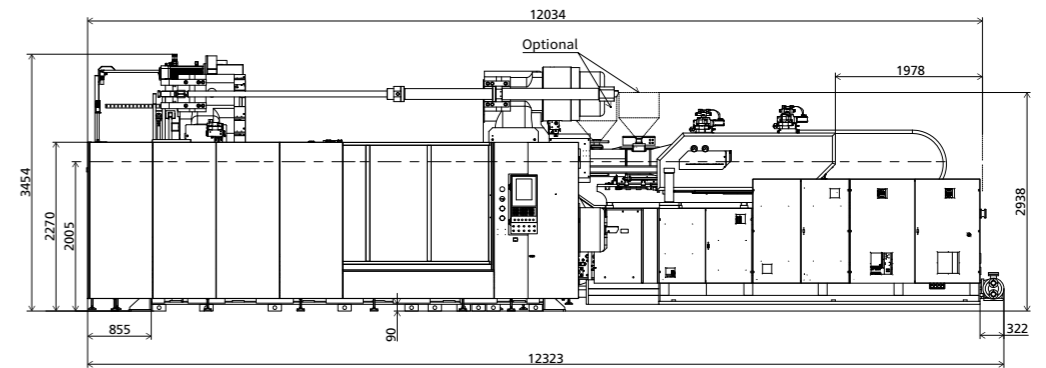
Platen dimensions fixed platen



Front dimension of rotary table

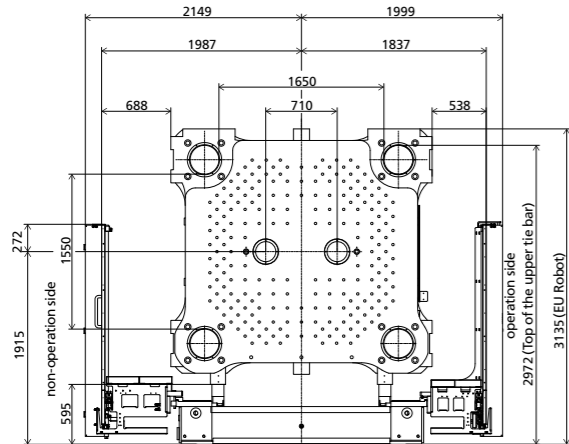


Front view

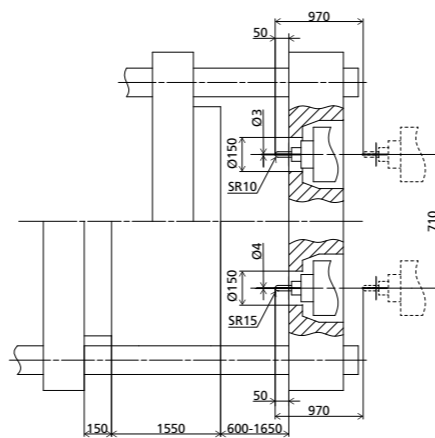


Note : M20 screw hole should be drilled on the ejector plate corresponding to the location of ejection hole, which is used to install the ejector transition rod.

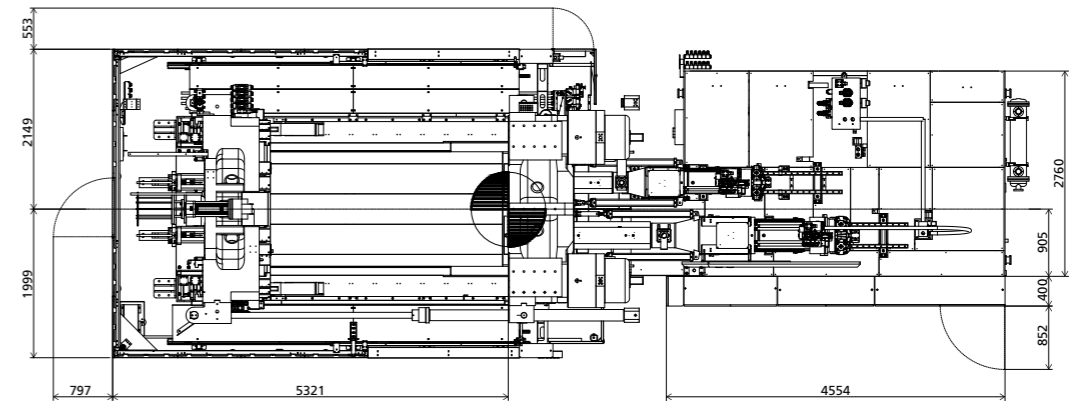
Robot mechanical interface



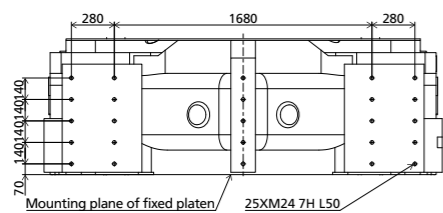
Side dimension drawing of platen



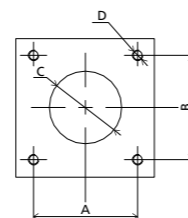
Top view



Robot top view fixed platen

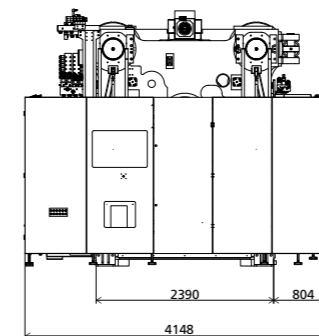


Platen dimension of hopper installation



INJECTION UNIT	A	B	C	D
4650	115	115	Ø106	4xM10-7H L20
1050	115	115	Ø70	4xM10-7H L20

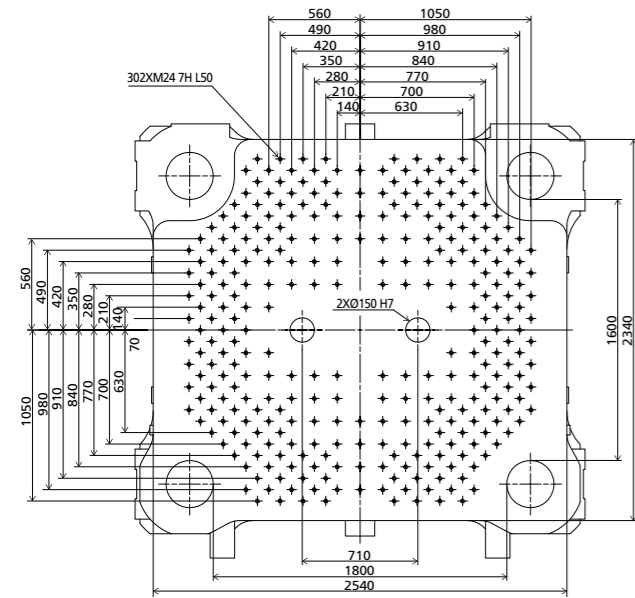
Side view



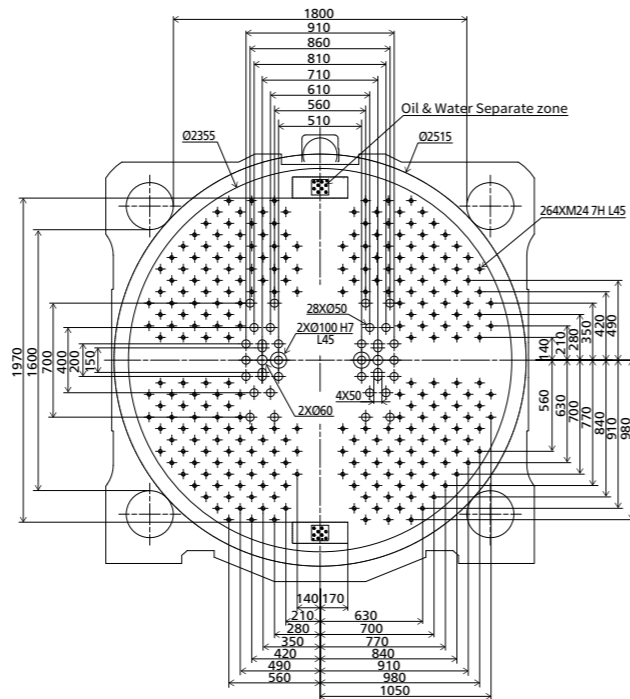
We reserve the right to make changes as a result of further technical advantages.

DIMENSIONS JU21000M

Platen dimensions fixed platen

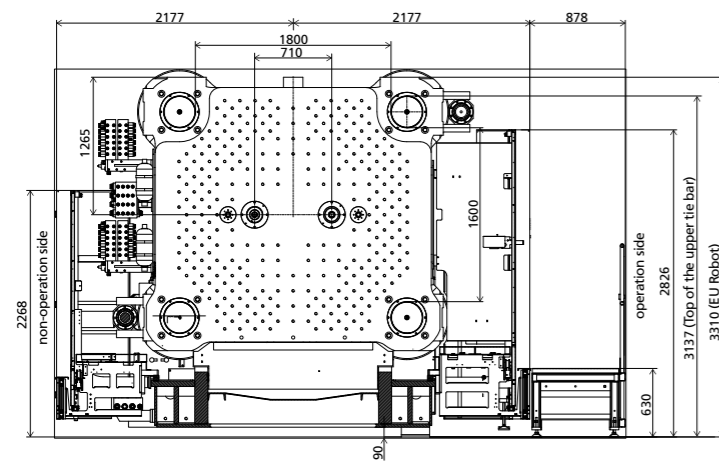


Front dimension of rotary table

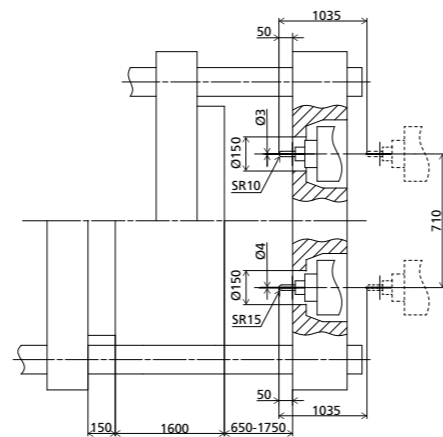


Note : M20 screw hole should be drilled on the ejector plate corresponding to the location of ejection hole, which is used to install the ejector transition rod.

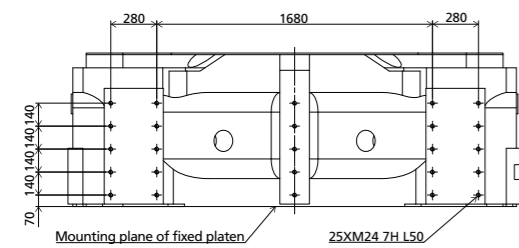
Robot mechanical interface



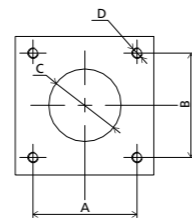
Side dimension drawing of platen



Robot top view fixed platen

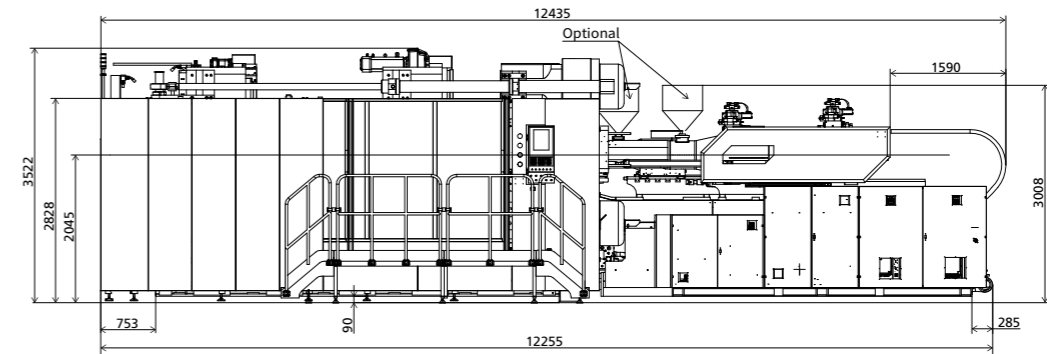


Platen dimension of hopper installation

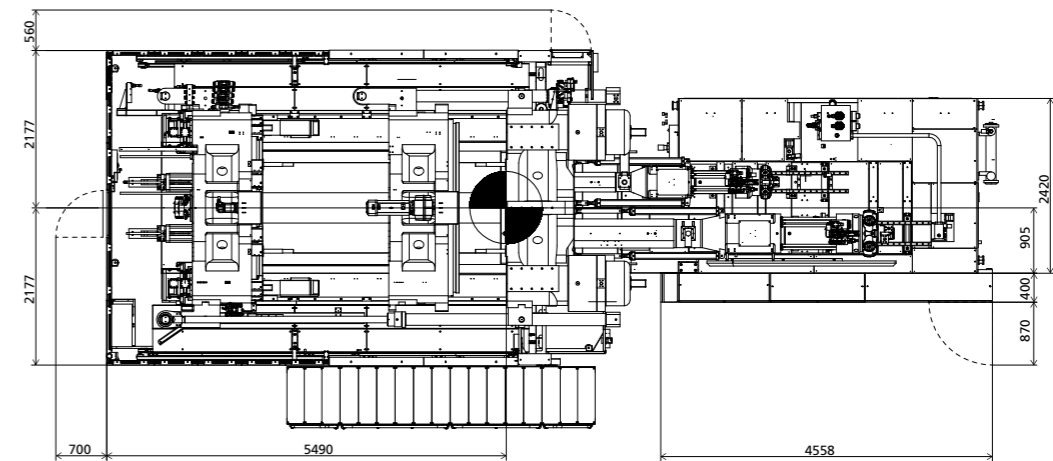


INJECTION UNIT	A	B	C	D
4650	115	115	Ø106	4xM10-7H L20
2400	115	115	Ø70	4xM10-7H L20

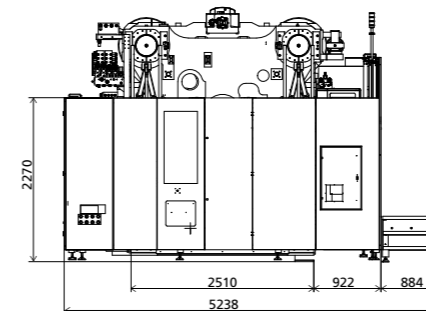
Front view



Top view



Side view



We reserve the right to make changes as a result of further technical advantages.

JU21000M

Turntable multi-color machine with narrow mold platen

SPECIFICATIONS

MACHINE TYPE

JU21000M/6600-2400

CLAMPING UNIT							
Clamping force	kN	21000					
Mold opening stroke	mm	1600/2700					
Dist. between tie bars (HxV)	mm	1800x1600					
Diameter of rotary platen	mm	Ø2355					
Max. mold install diameter	mm	Ø2515					
Bearing Capacity of Rotary Platen ①	t	18					
Mold height max.	mm	1750					
Mold height min.	mm	650					
Ejector stroke ②	mm	300					
Ejector force	kN	196x2					
Nozzle center distance ③	mm	710					
Distance between molds positing centers	mm	510					

		6600			2400		
		A	B	C	A	B	C
Screw diameter	mm	90	100	110	65	65	70
Screw L/D ratio	L/D	24.4	22	20	21.5	20	18.7
Injection volume (theoretical)	cm ³	2990	3691	4467	1068	1239	1423
Injection weight (PS)	g	2721	3359	4065	972	1127	1295
Injection rate (PS)	g/s	624	770	932	334	388	445
Plasticizing rate (GPPS) ④	g/s	72.8	89.2	106.0	52	59.7	67.6
Injection pressure	MPa	222	180	149	229	198	172
Screw speed	rpm	0~130			0~200		

OTHERS							
Pump motor power	kW	75+45			55		
Heater power	kW	67.8			32		
Machine dimension (LxWxH)	m	12.5x5.3x3.6					
Machine weight	t	105					
Hopper capacity	kg	100			50		
Oil tank	l	1550					

NOTE:

NOTE:

- ① Load bearing of rotary table: it is the data when the mold thickness at the rotary table side is 1/2 of the maximum mold thickness. If the mold thickness at the rotary table side exceeds 1/2 of the maximum mold thickness, the data will be reduced accordingly.
- ② The ejection stroke is the data when the ejector transition rod is installed.
- ③ The nozzle center distance is the same as the mold positioning center distance at the fixed mold side.
- ④ Plasticizing capacity (GPPS): GB standard, with application of GPPS plasticizing capacity of 3-zone screws.

We reserve the right to make changes as a result of further technical advantages.

NOTE:

Ruled area for technical notes on the left side of the page.

NOTE:

Ruled area for technical notes on the right side of the page.