

TECHNOLOGY TO THE POINT



SMART
TECHNOLOGY



FLEXIBLE
INTEGRATION



SUSTAINABLE
SOLUTIONS

HAITIAN PLASTICS MACHINERY GROUP CO., LTD.

No.1688, Haitian Road, Xiaogang, Beilun, Ningbo, Zhejiang, China 315801

+ 86-574-8617 7005 (China)

+ 86-574-8617 7242 (International)

haitian@mail.haitian.com

www.haitianpm.com

NINGBO HAITIAN HUAYUAN MACHINERY CO.,LTD.

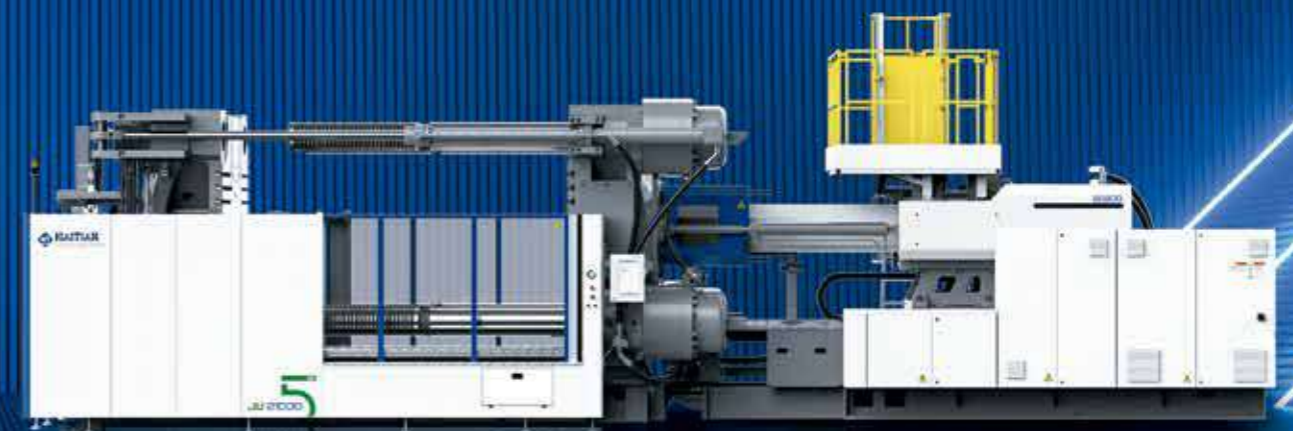
No.1, Nanhuan Road, Export Processing Zone, Beilun, Ningbo, Zhejiang, China 315806

+86-574-8617 7242

+86-574-8622 1864

haitian@mail.haitian.com

www.haitianpm.com



JUV/SE

JUPITER Series

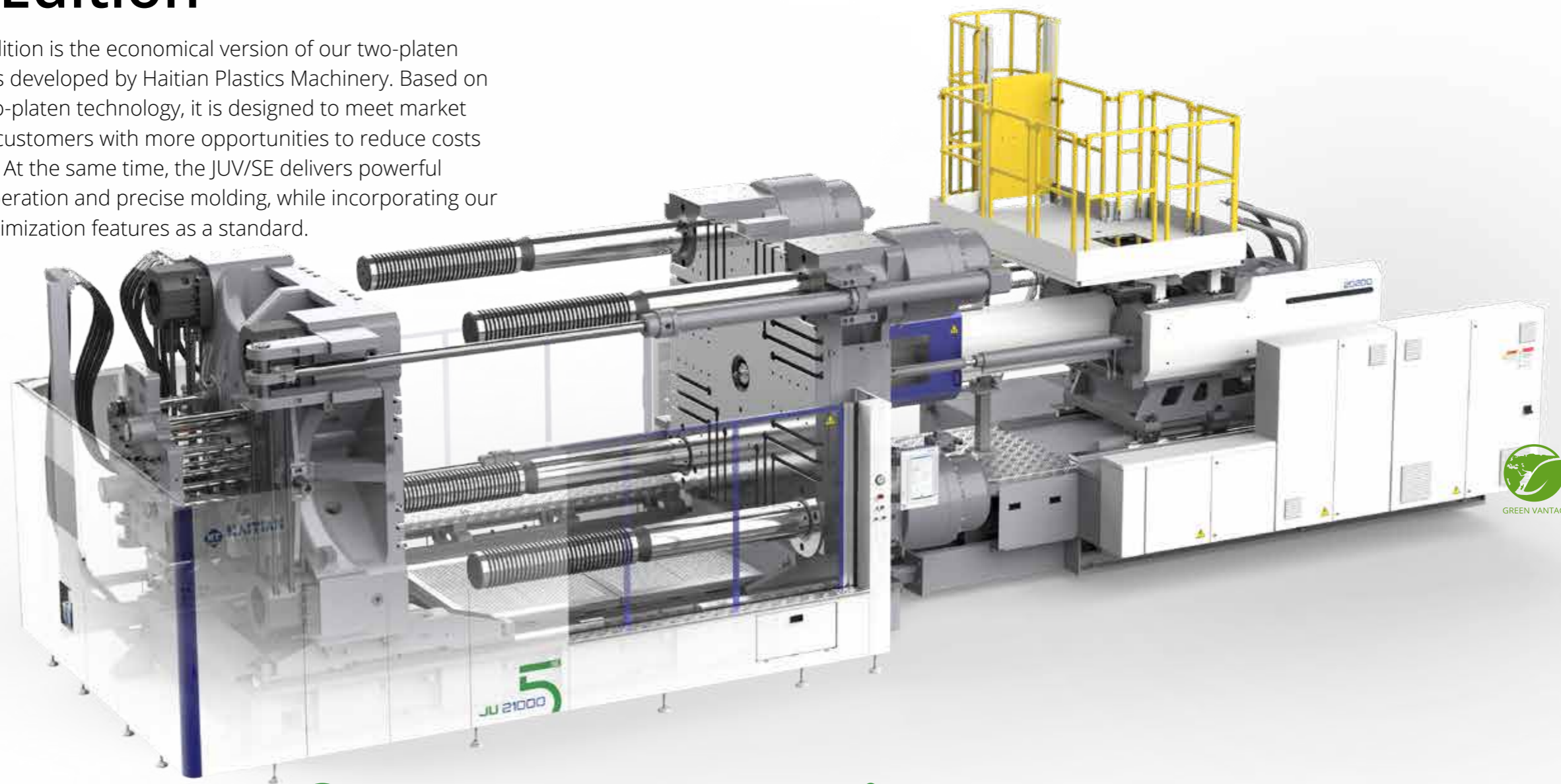
Servo-Hydraulic Two-Platen Solution

12,000 - 55,000 kN

JUV/SE

Space Saving Two-Platen Special Edition

The Jupiter V Special Edition is the economical version of our two-platen injection molding series developed by Haitian Plastics Machinery. Based on our fifth generation two-platen technology, it is designed to meet market demands and provide customers with more opportunities to reduce costs and improve efficiency. At the same time, the JUV/SE delivers powerful performance, stable operation and precise molding, while incorporating our HT·XTEND machine optimization features as a standard.



HT·XTEND

- Utilizes a multi-core CPU control system for smooth and user-friendly operation, significantly enhancing response speed.
- HT·XTEND ecosystem and flexible integration enable more scientific and efficient management decisions, improving machine- and overall processes.



Efficiency

- A custom-grade servo power system delivers powerful performance with high-speed response and dynamic sensitivity.
- Fully digital hydraulic simulation technology ensures rapid mold movement to achieve efficient and stable mold opening and closing.



Stability

- A high-rigidity clamping structure, combined with Haitian's HT·XTEND mold-opening control technology, ensures stable and reliable mold-opening positioning accuracy.
- The flexible and controllable injection unit, integrated with fully digital closed-loop injection technology, enables precise control of injection movements, delivering high injection accuracy, excellent low-speed stability, and superior product consistency. This not only enhances equipment performance but also improves process adaptability.
- Accurate oil temperature control ensures stable process conditions, precise feeding temperatures, steady material storage, and smoother, more reliable machine operation overall.



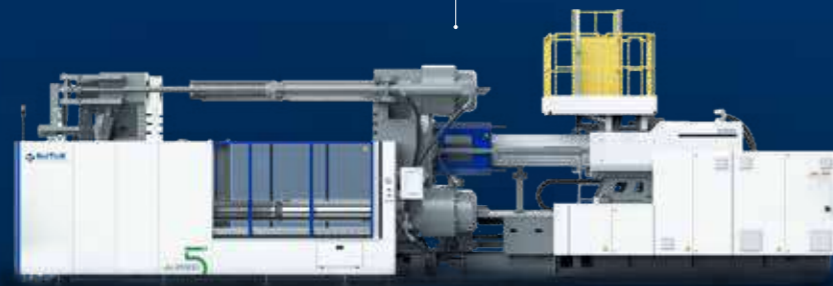
Energy Efficiency

- The compact design saves space while providing an ultra-large mold capacity, showcasing exceptional scalability to meet the diverse demands of large-scale product production across various industries.
- Built on the HT·XTEND ecological technology platform, the fifth-generation dedicated injection molding servo drive system further enhances energy-saving efficiency, putting green production fully within reach.

JUV/SE HT·XTENDE

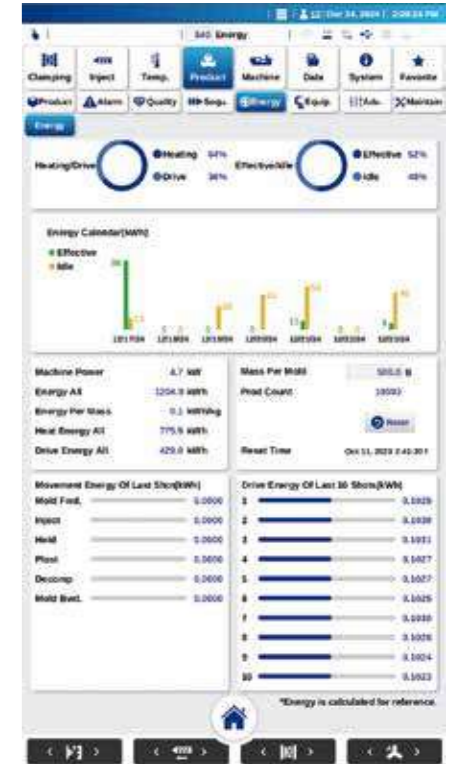
The JUV/SE series integrates a wealth of smart features, from HT Clamp, HT Energy, HT Lubricate to HT Diagnose. Guided by smart innovation and intelligent empowerment, we continuously help customers reduce operating costs, improve production efficiency, and collaboratively build a smarter future.

- 
 HT · Clamp
- 
 HT · Energy
- 
 HT · Lubricate
- 
 HT · Diagnose

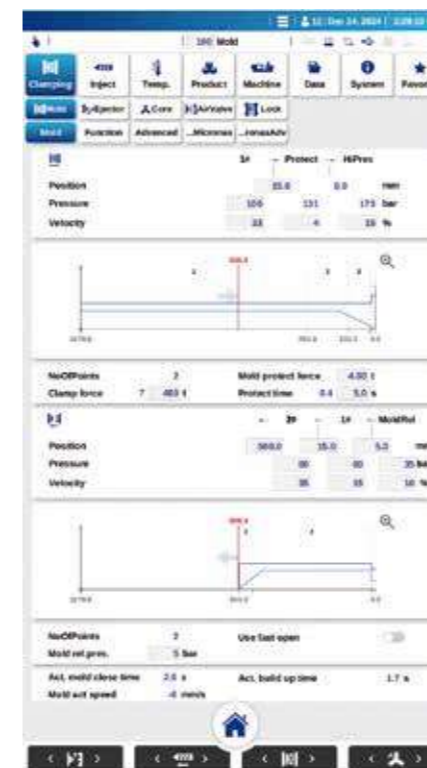


SMART FEATURES AS GENERAL STANDARD

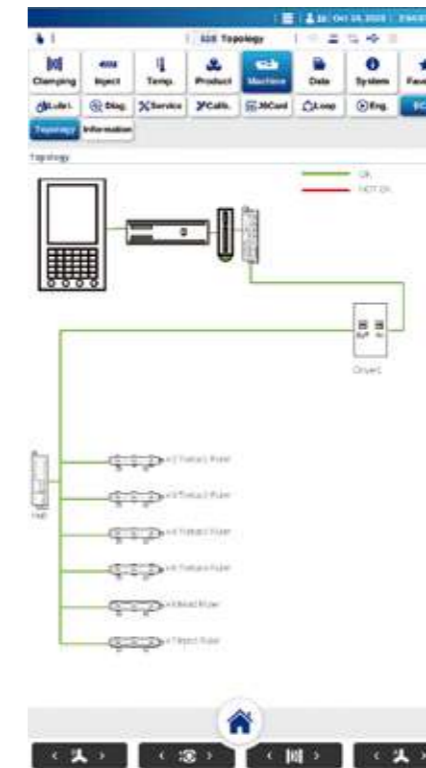
Inhouse developments enable us to create more efficient solutions. Like for HT Energy we replaced sensors with mathematical models. This standard feature, provided at no extra cost.



HT·Energy
Standard with refined monitoring of energy consumption, auxiliary management, statistics and analysis of energy consumption distribution in the production process.



HT-Clamp
Self-learning and self-correction algorithm adjusts position deviation, accurates mold opening and positioning, and stables and fast movement.

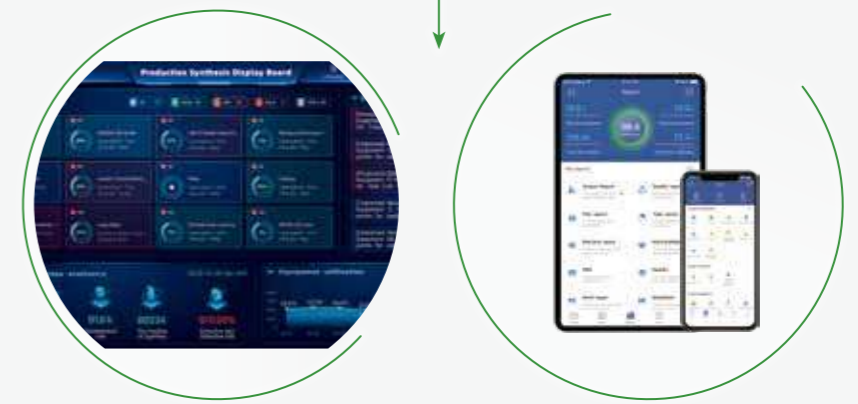
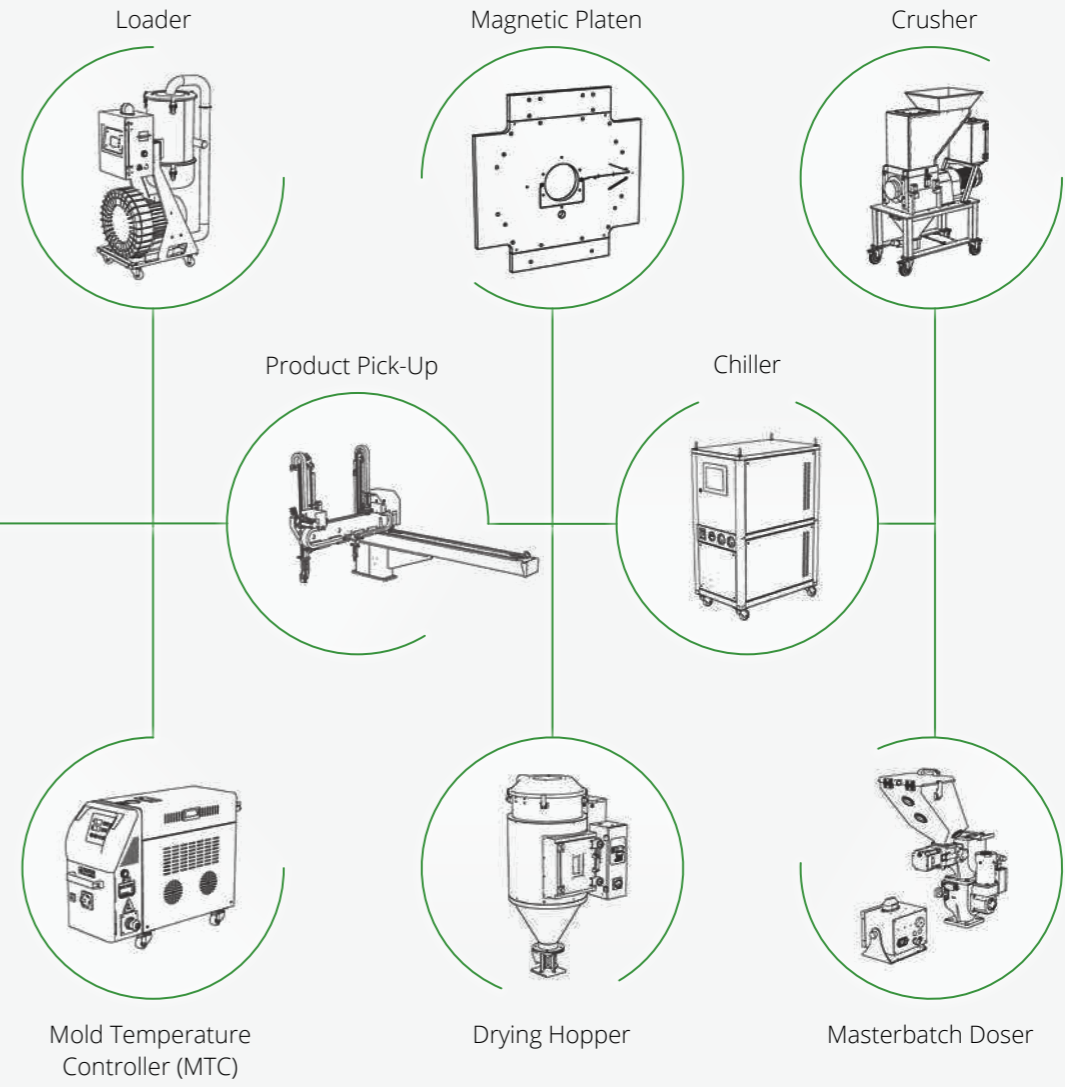
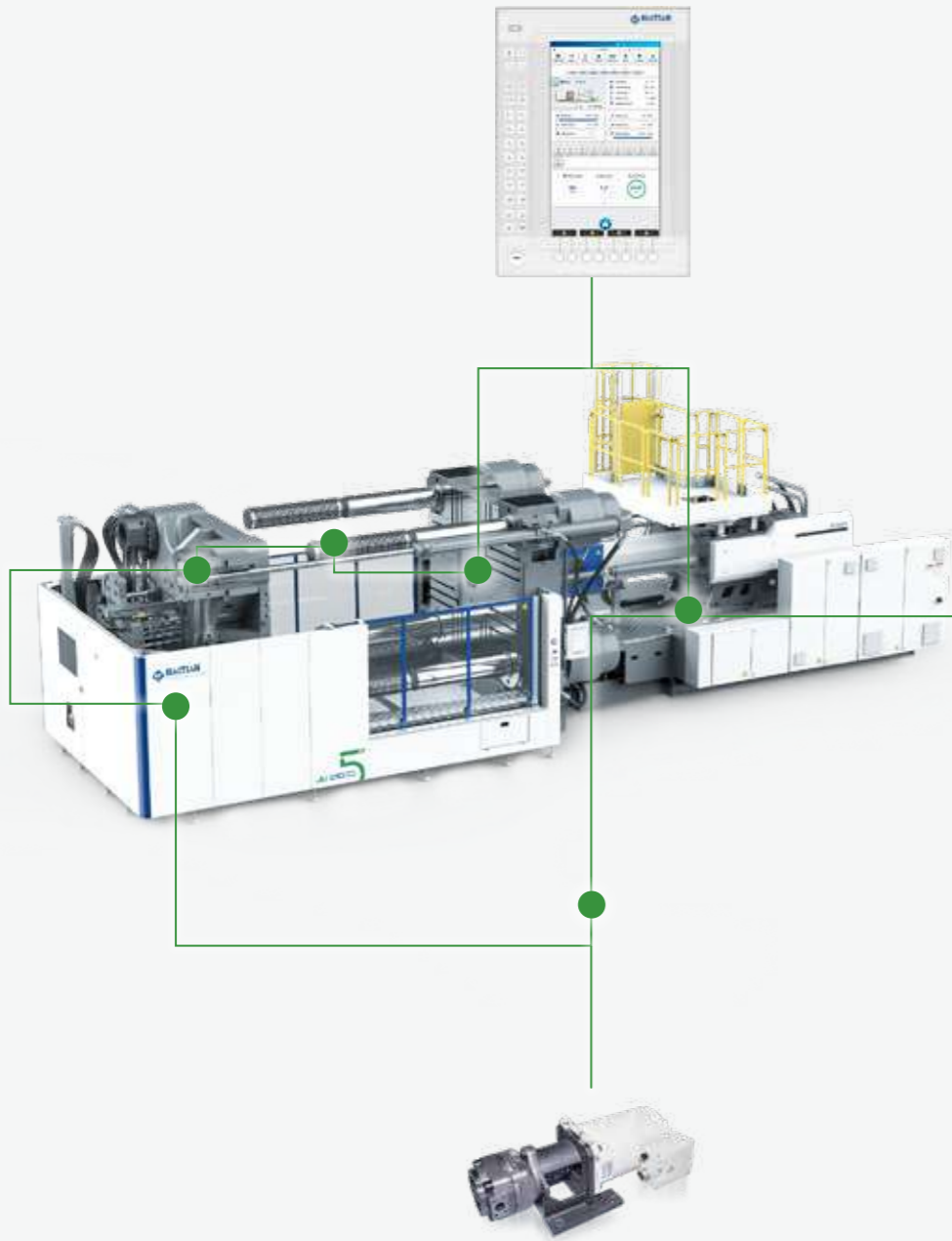


HT-Diagnose
A great help for service, for all functions connected to the bus system to indicate e.g. when sensors are not connected.



HT-Lubricate
A digital lubrication model, combined with neural network control, dynamically adjusts to provide the optimal lubrication amount.





JUV/SE Flexible Integration

JUV/SE is open for all kinds of integrations. Also, the entire series is equipped with "Go Factory 2.0. In addition, it can be compatible with the latest international general interfaces according to needs. Customers can freely choose automation integration equipment and MES partners to realize interactive connections between multi-device and multi-platform systems with injection molding machines as the core, and enjoy open integration.

JU12000 V /SE

MACHINE TYPE			JU12000 V /SE															
CLAMPING UNIT	Clamping force	kN	12000															
	Mold opening stroke ^①	mm	2050/1400															
	Mold height min.	mm	600															
	Mold height max.	mm	1250															
	Total daylight max.	mm	2650															
	Dist. between tie-bars (H×V)	mm	1310×1200															
	Ejector stroke	mm	350															
	Ejector force	kN	230															
	Mold weight max. ^②	t	20															
			5050				6500				8550				11200			
			A	B	C	D	A	B	C	D	A	B	C	D	A	B	C	D
INJECTION UNIT	Screw diameter	mm	80	90	100	110	90	100	110	120	100	110	120	130	110	120	130	140
	Screw L/D ratio	L/D	24.8	22	19.8	18	24.4	22	20	18.3	24.2	22	20.2	18.6	26.2	24	22.2	20.6
	Injection volume (theoretical)	cm ³	2261	2862	3534	4276	2990	3691	4466	5315	4005	4846	5767	6769	5226	6220	7300	8466
	Injection weight (PS)	g	2058	2605	3216	3891	2720	3359	4064	4837	3645	4410	5248	6160	4756	5660	6643	7704
	Injection rate (PS)	g/s	558	706	872	1056	572	706	855	1018	736	890	1060	1244	785	934	1096	1271
	Injection pressure	MPa	223	176	142	118	217	176	145	122	212	175	147	125	213	179	153	132
	Plasticizing rate (GPPS) ^③	g/s	80.6	101.2	124.6	146.0	89.5	110.0	130.0	152.0	100.9	121.0	140.2	161.4	123.0	142.0	164.0	187.0
	Plasticizing rate (HDPE) ^④	g/s	119.1	150.8	185.8	218.0	132.0	162.0	193.0	224.0	147.3	176.5	200.7	231.0	187.0	217.0	240.0	273.0
	Screw speed	rpm	165				135				116				105			
OTHERS	Pump motor power	kW	105				105				127				135			
	Heater power	kW	57				70				83				104			
	Machine dimension (L×W×H) ^⑤	m	9.58×3.26×2.91				10.01×3.26×2.91				10.03×3.26×2.92				10.92×3.26×3.30			
	Machine weight	t	42				44				46				49			
	Hopper capacity (OP)	kg	100				100				100				100			
	Oil tank ^⑥	l	610				910				910				1250			

NOTE:

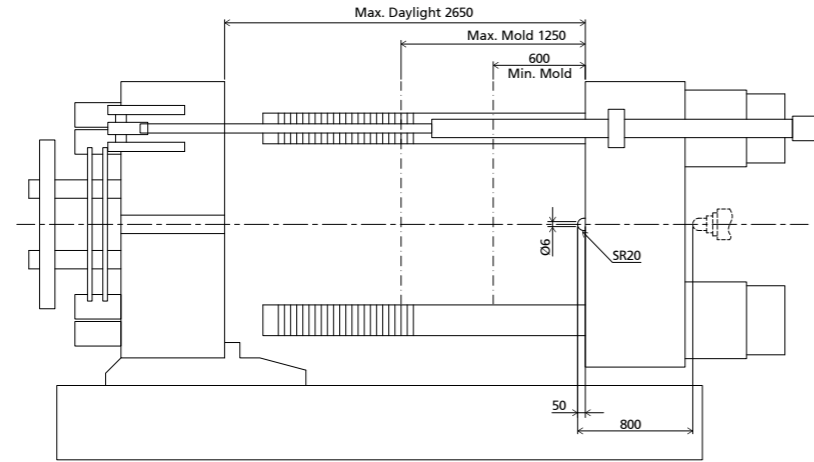
- ① With min. mold height / with max. mold height.
- ② Moving platen: 2/3 of max. mold weight.
- ③ Plasticizing capacity (GPPS): GB standard, with application of GPPS plasticizing capacity of 3-zone screws.
- ④ Plasticizing capacity (HDPE): Euromap 19, with application of HDPE plasticizing capacity of barrier screws.
- ⑤ The size is the net size of the machine, excluding the width of the feeding platform and the working platform.
- ⑥ The oil tank volume refers to the volume of the oil tank itself, excluding the volume in cylinder and pipeline. In this sense, the customer is advised to prepare the hydraulic oil according to 1.35 times of the oil tank volume.
The above plasticizing capacity is for reference only.

We reserve the right to make changes as a result of further technical advantages.

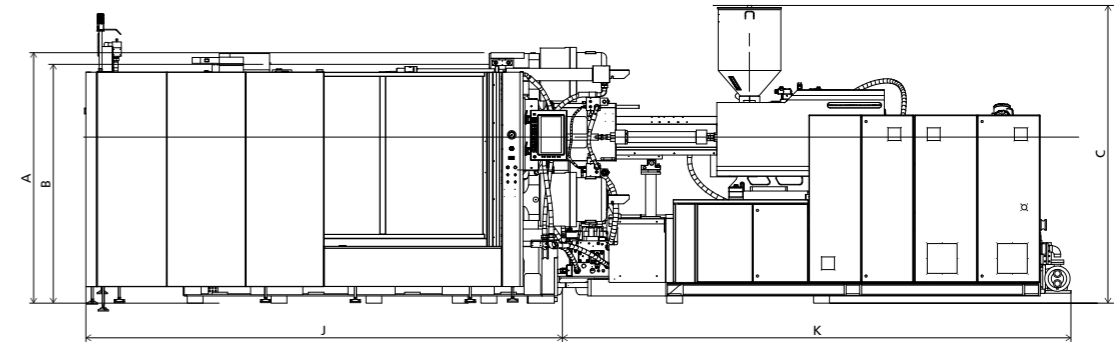


DIMENSIONS JU12000 V/SE

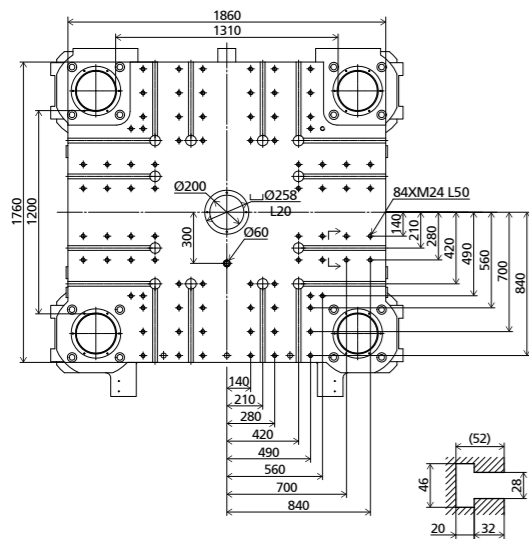
Clamping Unit



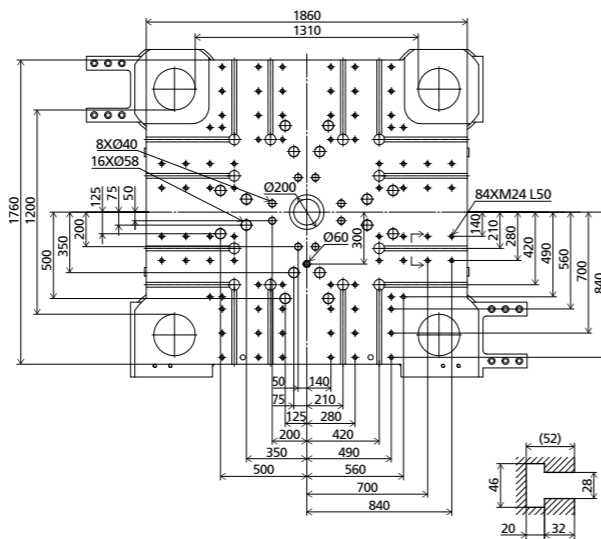
Front view



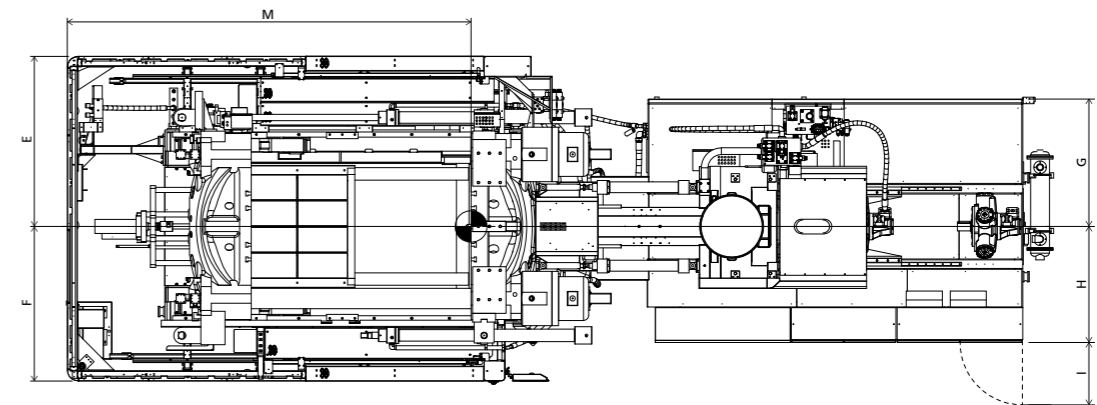
Fixed platen dimensions



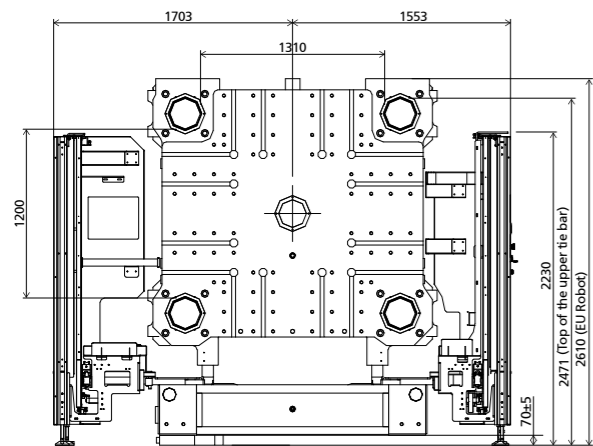
Moving platen dimensions



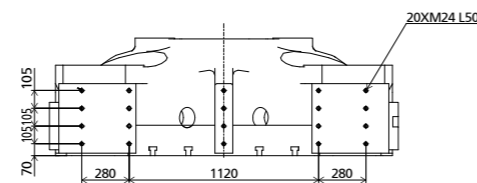
Top view



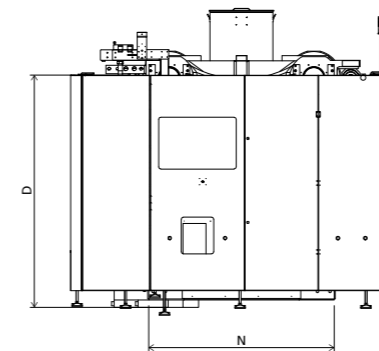
Robot Mechanical interface



Robot top view fixed platen



Side view



Standard

	INJECTION UNIT									DIMENSIONS (mm)				
	A	B	C	D	E	F	G	H	I	J	K	M	N	
5050	2610	2471	2905	2200	1703	1553	1188	1034	596	5102	4311	4307	1896	
6500	2610	2471	2909	2200	1703	1553	1213	1109	596	5102	5012	4307	1896	
8550	2610	2471	2920	2200	1703	1553	1213	1109	596	5102	4913	4307	1896	
11200	2610	2471	3293	2200	1703	1553	1303	1219	596	5102	5812	4307	1896	



JU13000 V /SE

MACHINE TYPE			JU13000 V /SE														
CLAMPING UNIT	Clamping force	kN	13000														
	Mold opening stroke ^①	mm	2250/1500														
	Mold height min.	mm	600														
	Mold height max.	mm	1350														
	Total daylight max.	mm	2850														
	Dist. between tie-bars (H×V)	mm	1390×1280														
	Ejector stroke	mm	350														
	Ejector force	kN	230														
	Mold weight max. ^②	t	23														
			6500				8550				11200				16600		
			A	B	C	D	A	B	C	D	A	B	C	D	A	B	C
INJECTION UNIT	Screw diameter	mm	90	100	110	120	100	110	120	130	110	120	130	140	130	140	150
	Screw L/D ratio	L/D	24.4	22	20	18.3	24.2	22	20.2	18.6	26.2	24	22.2	20.6	24	22.3	20.8
	Injection volume (theoretical)	cm ³	2990	3691	4466	5315	4005	4846	5767	6769	5226	6220	7300	8466	8362	9698	11133
	Injection weight (PS)	g	2720	3359	4064	4837	3645	4410	5248	6160	4756	5660	6643	7704	7609	8825	10131
	Injection rate (PS)	g/s	719	887	1074	1278	736	890	1060	1244	785	934	1096	1271	1197	1389	1594
	Injection pressure	MPa	217	176	145	122	212	175	147	125	213	179	153	132	198	171	149
	Plasticizing rate (GPPS) ^③	g/s	99.4	122.0	144.4	168.0	100.9	121.0	140.2	161.4	123.0	142.0	164.0	187.0	168.0	192.0	220.0
	Plasticizing rate (HDPE) ^④	g/s	146.6	180.2	213.8	248.0	147.3	176.5	200.7	231.0	187.0	217.0	240.0	273.0	252.0	283.0	336.0
	Screw speed	rpm	150				116				105				102		
OTHERS	Pump motor power	kW	127				127				135				195		
	Heater power	kW	70				83				104				124		
	Machine dimension (L×W×H) ^⑤	m	10.43×3.37×3.40				10.45×3.37×3.40				11.19×3.37×3.40				12.36×3.47×4.33		
	Machine weight	t	49				51				54				59		
	Hopper capacity (OP)	kg	100				100				100				400		
	Oil tank ^⑥	l	910				910				1250				1550		

NOTE:

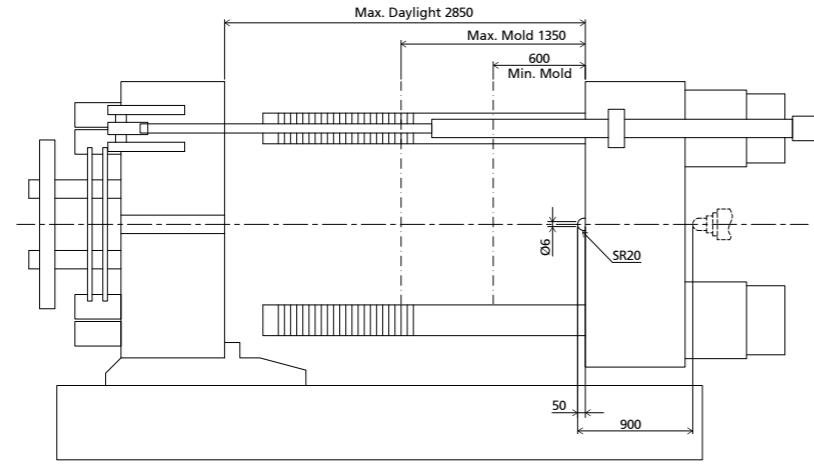
- ① With min. mold height / with max. mold height.
- ② Moving platen: 2/3 of max. mold weight.
- ③ Plasticizing capacity (GPPS): GB standard, with application of GPPS plasticizing capacity of 3-zone screws.
- ④ Plasticizing capacity (HDPE): Euromap 19, with application of HDPE plasticizing capacity of barrier screws.
- ⑤ The size is the net size of the machine, excluding the width of the feeding platform and the working platform.
- ⑥ The oil tank volume refers to the volume of the oil tank itself, excluding the volume in cylinder and pipeline. In this sense, the customer is advised to prepare the hydraulic oil according to 1.35 times of the oil tank volume.
The above plasticizing capacity is for reference only.

We reserve the right to make changes as a result of further technical advantages.

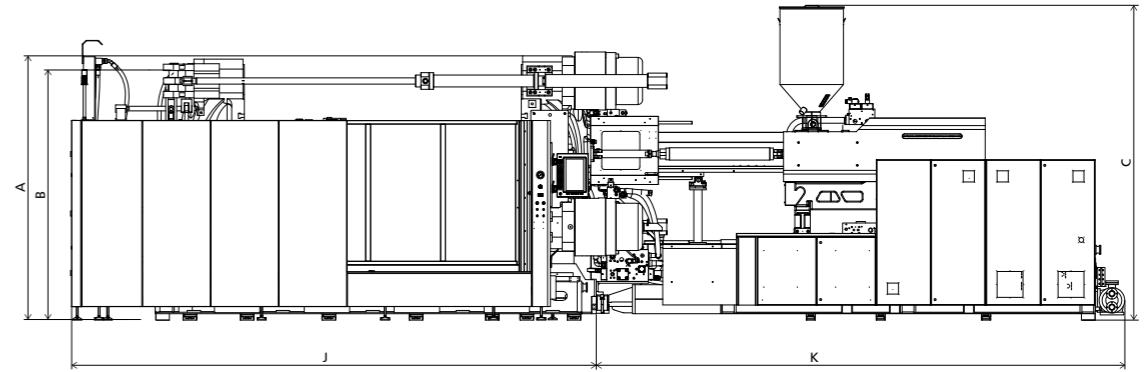


DIMENSIONS JU13000 V/SE

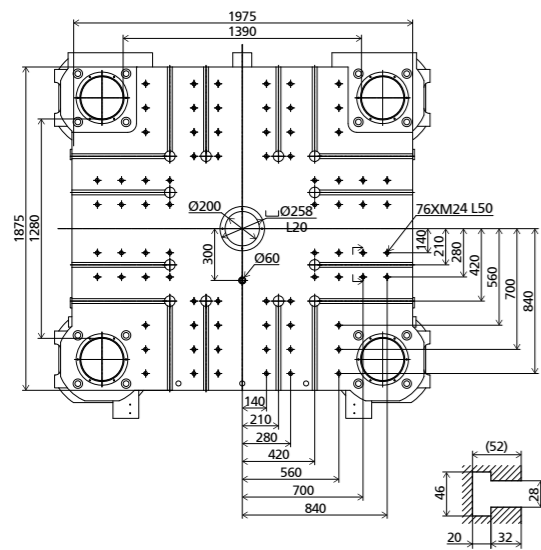
Clamping Unit



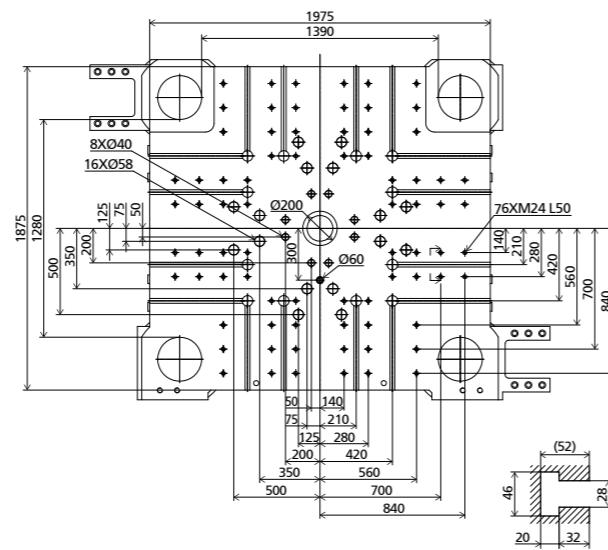
Front view



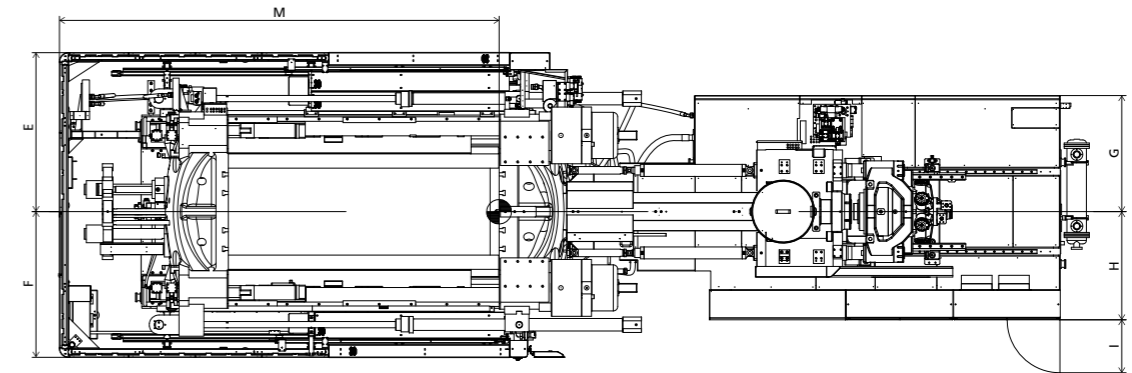
Fixed platen dimensions



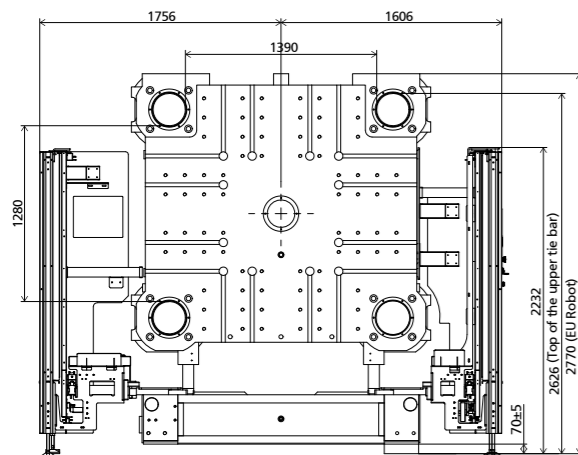
Moving platen dimensions



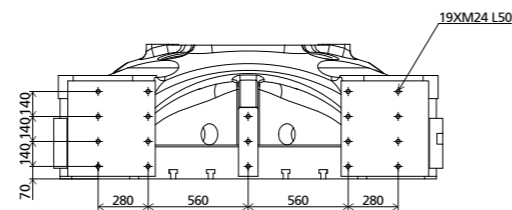
Top view



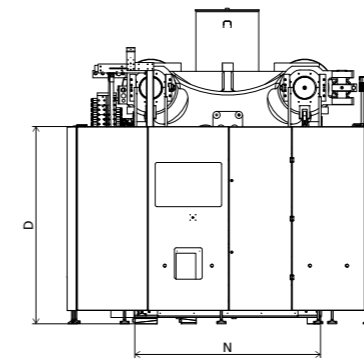
Robot Mechanical interface



Robot top view fixed platen



Side view



Standard

	INJECTION UNIT									DIMENSIONS (mm)			
	A	B	C	D	E	F	G	H	I	J	K	M	N
6500	2770	2626	3393	2200	1756	1606	1213	1109	596	5409	5021	4639	2002
8550	2770	2626	3393	2200	1756	1606	1213	1109	596	5409	5021	4639	2002
11200	2770	2626	3393	2200	1756	1606	1307	1219	596	5409	5821	4639	2002
16600	2770	2626	4328	2200	1756	1606	1855	1342	596	5409	6060	4639	2002



JU14000 V /SE

MACHINE TYPE			JU14000 V /SE														
CLAMPING UNIT	Clamping force	kN	14000														
	Mold opening stroke ^①	mm	2350/1600														
	Mold height min.	mm	700														
	Mold height max.	mm	1450														
	Total daylight max.	mm	3050														
	Dist. between tie-bars (H×V)	mm	1470×1360														
	Ejector stroke	mm	400														
	Ejector force	kN	330														
	Mold weight max. ^②	t	27														
INJECTION UNIT			6500				8550				11200				16600		
			A	B	C	D	A	B	C	D	A	B	C	D	A	B	C
	Screw diameter	mm	90	100	110	120	100	110	120	130	110	120	130	140	130	140	150
	Screw L/D ratio	L/D	24.4	22	20	18.3	24.2	22	20.2	18.6	26.2	24	22.2	20.6	24	22.3	20.8
	Injection volume (theoretical)	cm ³	2990	3691	4466	5315	4005	4846	5767	6769	5226	6220	7300	8466	8362	9698	11133
	Injection weight (PS)	g	2720	3359	4064	4837	3645	4410	5248	6160	4756	5660	6643	7704	7609	8825	10131
	Injection rate (PS)	g/s	719	887	1074	1278	736	890	1060	1244	785	934	1096	1271	1197	1389	1594
	Injection pressure	MPa	217	176	145	122	212	175	147	125	213	179	153	132	198	171	149
	Plasticizing rate (GPPS) ^③	g/s	99.4	122.0	144.4	168.0	100.9	121.0	140.2	161.4	123.0	142.0	164.0	187.0	168.0	192.0	220.0
	Plasticizing rate (HDPE) ^④	g/s	146.6	180.2	213.8	248.0	147.3	176.5	200.7	231.0	187.0	217.0	240.0	273.0	252.0	283.0	336.0
Screw speed	rpm	150				116				105				102			
OTHERS	Pump motor power	kW	127				127				135				195		
	Heater power	kW	70				83				104				124		
	Machine dimension (L×W×H) ^⑤	m	10.80×3.44×3.48				10.81×3.44×3.48				11.60×3.44×3.48				12.73×3.50×4.41		
	Machine weight	t	54				56				59				64		
	Hopper capacity (OP)	kg	100				100				100				400		
	Oil tank ^⑥	l	910				910				1250				1550		

NOTE:

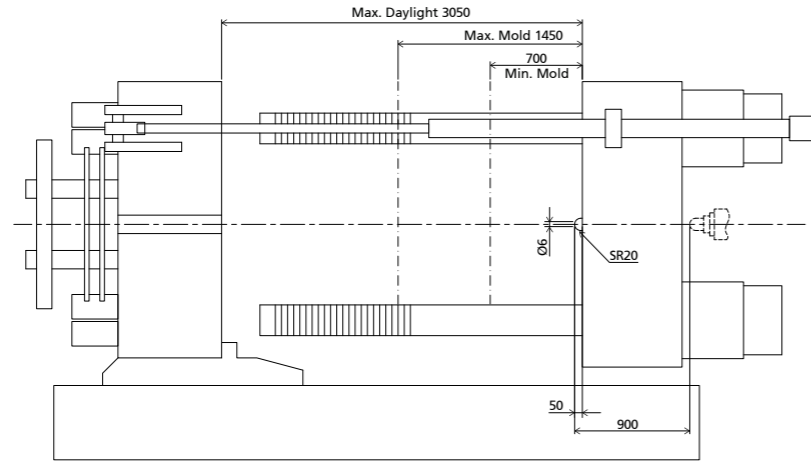
- ① With min. mold height / with max. mold height.
- ② Moving platen: 2/3 of max. mold weight.
- ③ Plasticizing capacity (GPPS): GB standard, with application of GPPS plasticizing capacity of 3-zone screws.
- ④ Plasticizing capacity (HDPE): Euromap 19, with application of HDPE plasticizing capacity of barrier screws.
- ⑤ The size is the net size of the machine, excluding the width of the feeding platform and the working platform.
- ⑥ The oil tank volume refers to the volume of the oil tank itself, excluding the volume in cylinder and pipeline. In this sense, the customer is advised to prepare the hydraulic oil according to 1.35 times of the oil tank volume.
The above plasticizing capacity is for reference only.

We reserve the right to make changes as a result of further technical advantages.

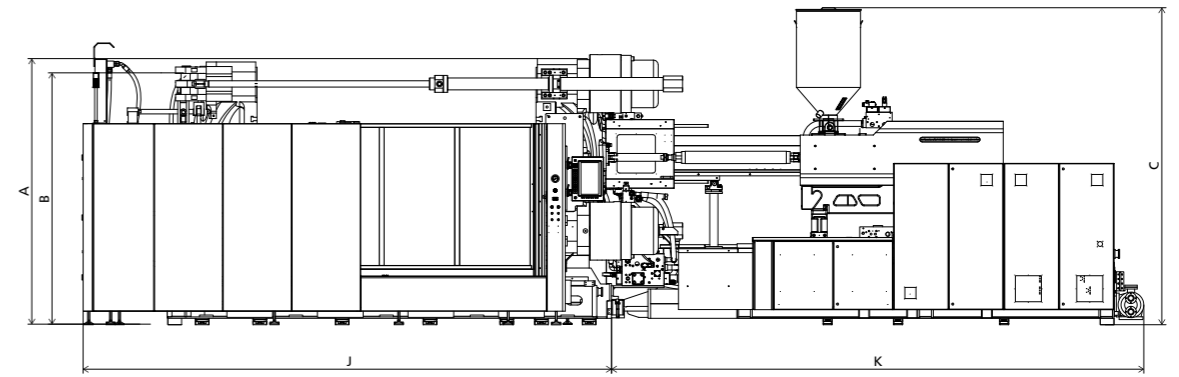


DIMENSIONS JU14000 V/SE

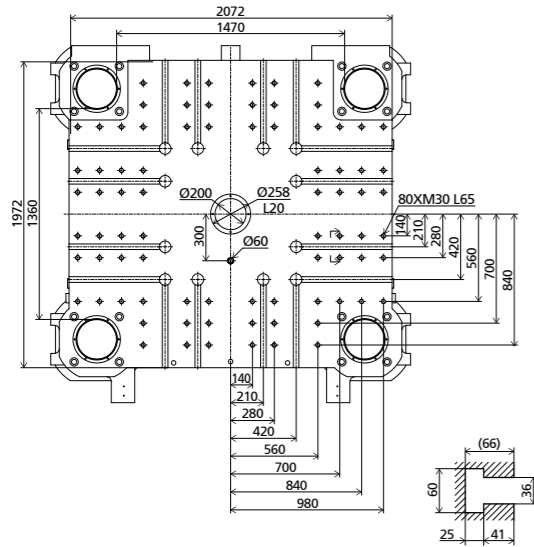
Clamping Unit



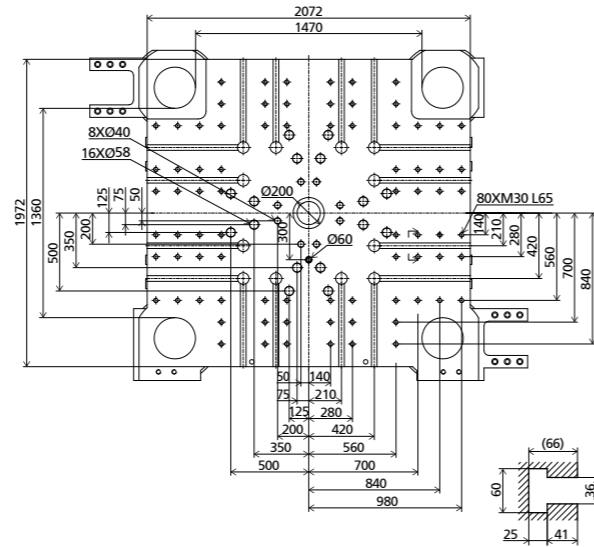
Front view



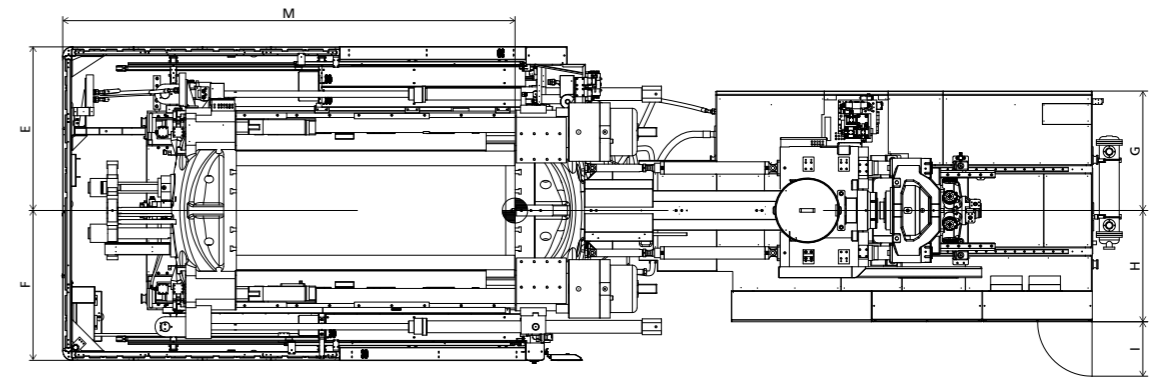
Fixed platen dimensions



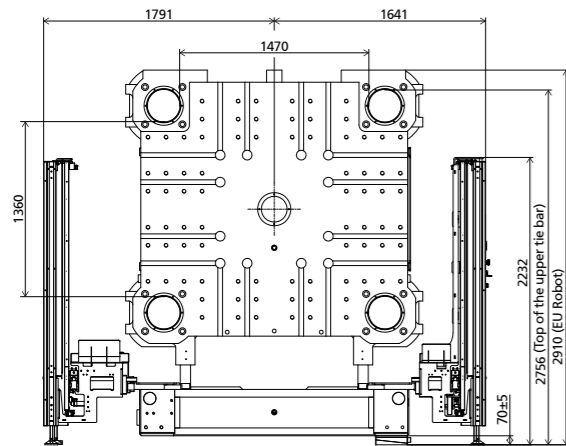
Moving platen dimensions



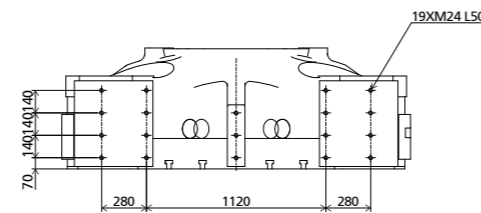
Top view



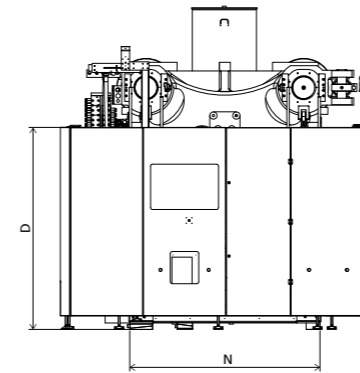
Robot Mechanical interface



Robot top view fixed platen



Side view



Standard

	INJECTION UNIT									DIMENSIONS (mm)			
	A	B	C	D	E	F	G	H	I	J	K	M	N
6500	2910	2756	3473	2200	1791	1641	1213	1109	596	5776	5021	4951	2072
8550	2910	2756	3473	2200	1791	1641	1213	1109	596	5776	5021	4951	2072
11200	2910	2756	3473	2200	1791	1641	1303	1219	596	5776	5821	4951	2072
16600	2910	2756	4408	2200	1791	1641	1855	1342	796	5776	6060	4951	2072



JU16000 V /SE

MACHINE TYPE		JU16000 V /SE												
CLAMPING UNIT	Clamping force	kN	16000											
	Mold opening stroke ^①	mm	2550/1700											
	Mold height min.	mm	700											
	Mold height max.	mm	1550											
	Total daylight max.	mm	3250											
	Dist. between tie-bars (H×V)	mm	1550×1450											
	Ejector stroke	mm	400											
	Ejector force	kN	330											
	Mold weight max. ^②	t	33											
			8550				11200				16600			
			A	B	C	D	A	B	C	D	A	B	C	
INJECTION UNIT	Screw diameter	mm	100	110	120	130	110	120	130	140	130	140	150	
	Screw L/D ratio	L/D	24.2	22	20.2	18.6	26.2	24	22.2	20.6	24	22.3	20.8	
	Injection volume (theoretical)	cm ³	4005	4846	5767	6769	5226	6220	7300	8466	8362	9698	11133	
	Injection weight (PS)	g	3645	4410	5248	6160	4756	5660	6643	7704	7609	8825	10131	
	Injection rate (PS)	g/s	789	955	1136	1334	785	934	1096	1271	1197	1389	1594	
	Injection pressure	MPa	212	175	147	125	213	179	153	132	198	171	149	
	Plasticizing rate (GPPS) ^③	g/s	110.4	132.5	153.5	176.0	123.0	142.0	164.0	187.0	168.0	192.0	220.0	
	Plasticizing rate (HDPE) ^④	g/s	161.2	193.3	219.8	252.0	187.0	217.0	240.0	273.0	252.0	283.0	336.0	
Screw speed	rpm	127				105				102				
OTHERS	Pump motor power	kW	135				135				195			
	Heater power	kW	83				104				124			
	Machine dimension (L×W×H) ^⑤	m	11.01×3.65×3.26				11.60×3.65×3.26				12.93×3.65×4.43			
	Machine weight	t	65				68				73			
	Hopper capacity (OP)	kg	100				100				400			
	Oil tank ^⑥	l	910				1250				1550			

NOTE:

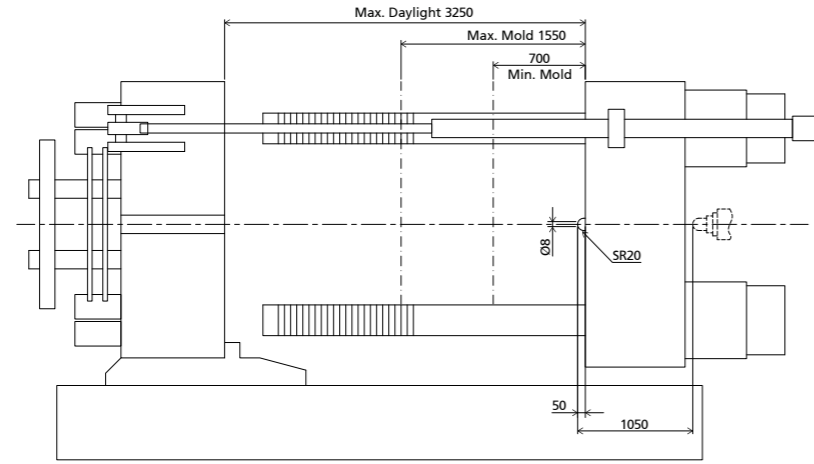
- ① With min. mold height / with max. mold height.
- ② Moving platen: 2/3 of max. mold weight.
- ③ Plasticizing capacity (GPPS): GB standard, with application of GPPS plasticizing capacity of 3-zone screws.
- ④ Plasticizing capacity (HDPE): Euromap 19, with application of HDPE plasticizing capacity of barrier screws.
- ⑤ The size is the net size of the machine, excluding the width of the feeding platform and the working platform.
- ⑥ The oil tank volume refers to the volume of the oil tank itself, excluding the volume in cylinder and pipeline. In this sense, the customer is advised to prepare the hydraulic oil according to 1.35 times of the oil tank volume.
The above plasticizing capacity is for reference only.

We reserve the right to make changes as a result of further technical advantages.

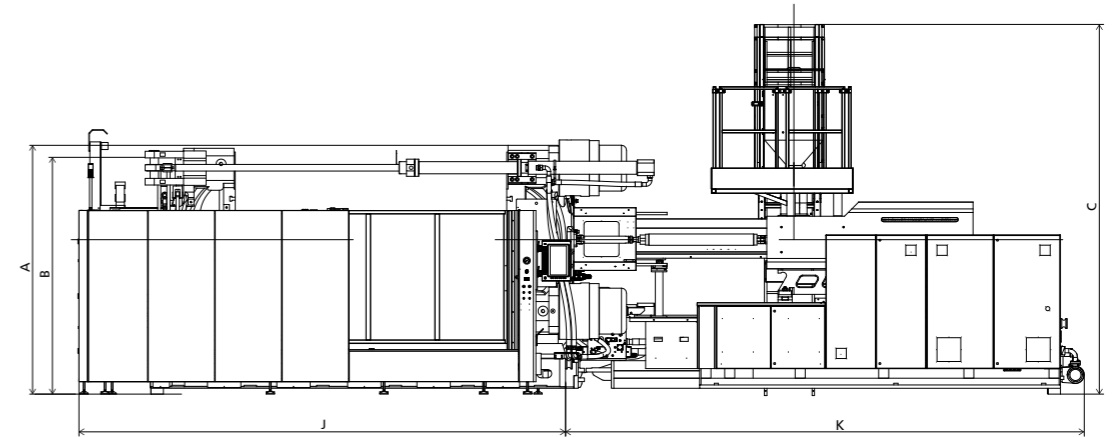


DIMENSIONS JU16000 V/SE

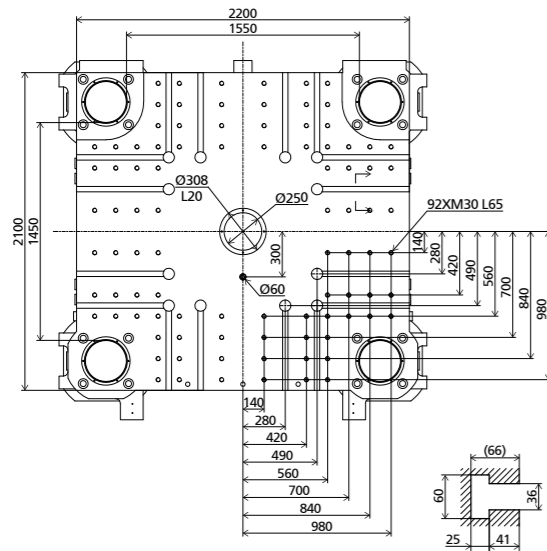
Clamping Unit



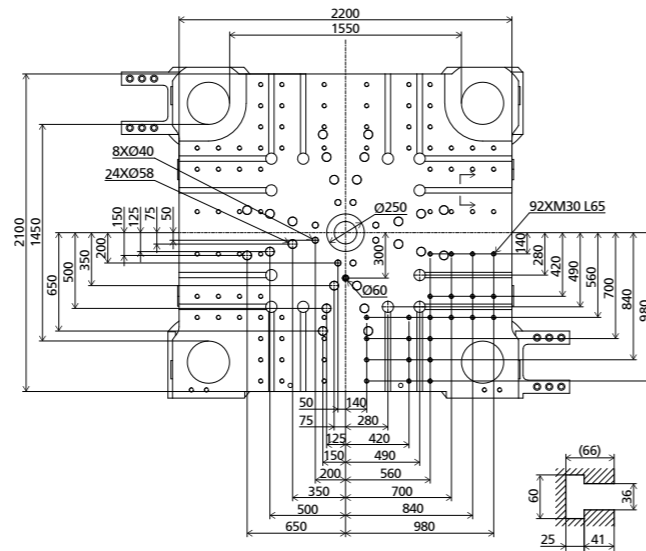
Front view



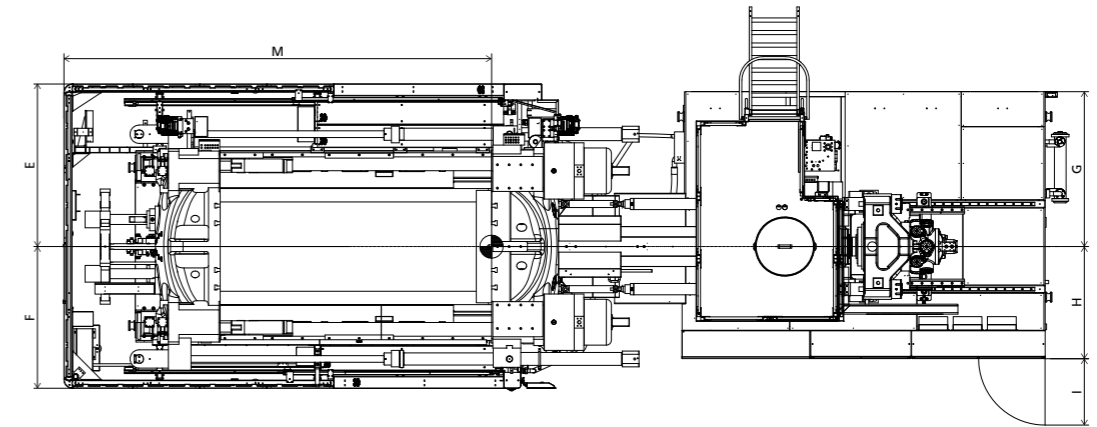
Fixed platen dimensions



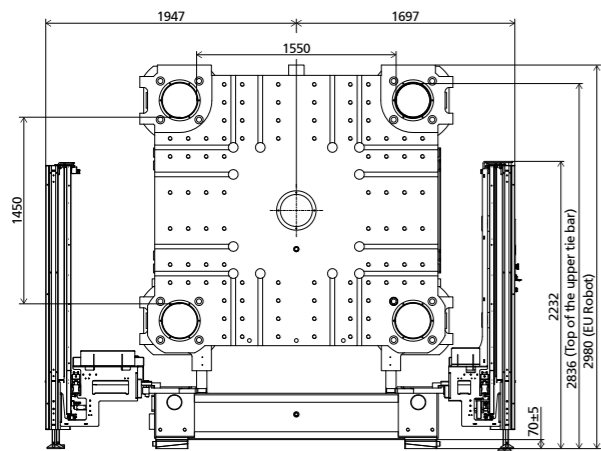
Moving platen dimensions



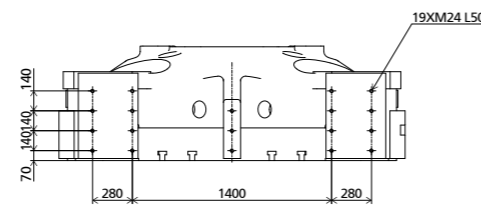
Top view



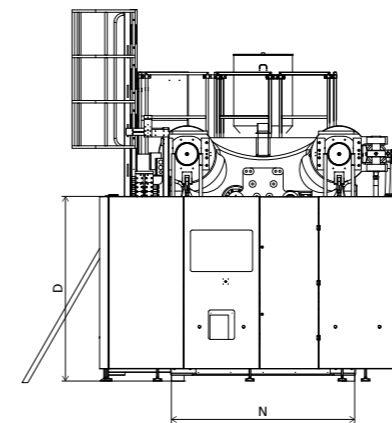
Robot Mechanical interface



Robot top view fixed platen



Side view



Standard

	INJECTION UNIT								DIMENSIONS (mm)				
	A	B	C	D	E	F	G	H	I	J	K	M	N
8550	2980	2836	3251	2200	1947	1697	1213	1109	596	5976	4900	5121	2184
11200	2980	2836	3251	2200	1947	1697	1303	1219	596	5976	5821	5121	2184
16600	2980	2836	4428	2200	1947	1697	1855	1342	796	5976	6060	5121	2184



JU18500 V /SE

MACHINE TYPE			JU18500 V /SE												
CLAMPING UNIT	Clamping force	kN	18500												
	Mold opening stroke ^①	mm	2600/1750												
	Mold height min.	mm	750												
	Mold height max.	mm	1600												
	Total daylight max.	mm	3350												
	Dist. between tie-bars (H×V)	mm	1680×1550												
	Ejector stroke	mm	450												
	Ejector force	kN	450												
	Mold weight max. ^②	t	40												
INJECTION UNIT			11200				16600			20200				28900	
			A	B	C	D	A	B	C	A	B	C	D	A	B
	Screw diameter	mm	110	120	130	140	130	140	150	140	150	160	170	160	170
	Screw L/D ratio	L/D	26.2	24	22.2	20.6	24	22.3	20.8	24	22.4	21	19.8	24	22.6
	Injection volume (theoretical)	cm ³	5226	6220	7300	8466	8362	9698	11133	10467	12016	13672	15434	17492	19747
	Injection weight (PS)	g	4756	5660	6643	7704	7609	8825	10131	9525	10935	12441	14045	15918	17970
	Injection rate (PS)	g/s	785	934	1096	1271	1197	1389	1594	1298	1490	1696	1914	1515	1711
	Injection pressure	MPa	213	179	153	132	198	171	149	193	168	147	130	165	146
	Plasticizing rate (GPPS) ^③	g/s	123.0	142.0	164.0	187.0	168.0	192.0	220.0	155.0	176.0	196.0	222.0	\	\
	Plasticizing rate (HDPE) ^④	g/s	187.0	217.0	240.0	273.0	252.0	283.0	336.0	243.0	294.0	303.0	334.0	280.0	310.0
Screw speed	rpm	105				102			85				72		
OTHERS	Pump motor power	kW	135				195			205				205	
	Heater power	kW	104				124			137				179	
	Machine dimension (L×W×H) ^⑤	m	12.13×3.85×3.27				13.19×3.85×4.42			13.27×3.85×4.42				14.23×3.85×4.42	
	Machine weight	t	80				85			89				92	
	Hopper capacity (OP)	kg	100				400			400				400	
	Oil tank ^⑥	l	1250				1550			1750				1920	

NOTE:

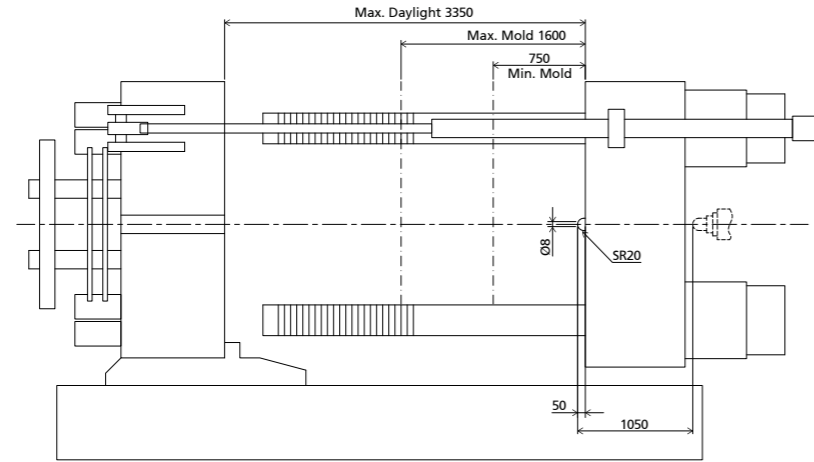
- ① With min. mold height / with max. mold height.
- ② Moving platen: 2/3 of max. mold weight.
- ③ Plasticizing capacity (GPPS): GB standard, with application of GPPS plasticizing capacity of 3-zone screws.
- ④ Plasticizing capacity (HDPE): Euromap 19, with application of HDPE plasticizing capacity of barrier screws.
- ⑤ The size is the net size of the machine, excluding the width of the feeding platform and the working platform.
- ⑥ The oil tank volume refers to the volume of the oil tank itself, excluding the volume in cylinder and pipeline. In this sense, the customer is advised to prepare the hydraulic oil according to 1.35 times of the oil tank volume.
The above plasticizing capacity is for reference only.

We reserve the right to make changes as a result of further technical advantages.

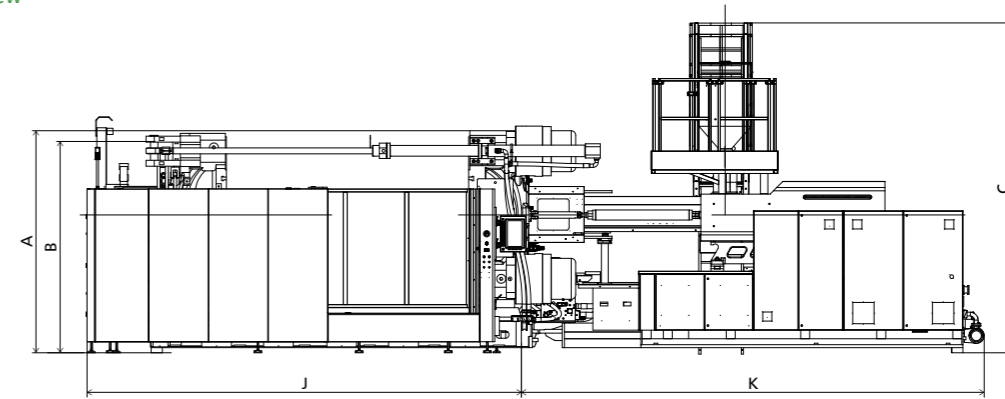


DIMENSIONS JU18500 V/SE

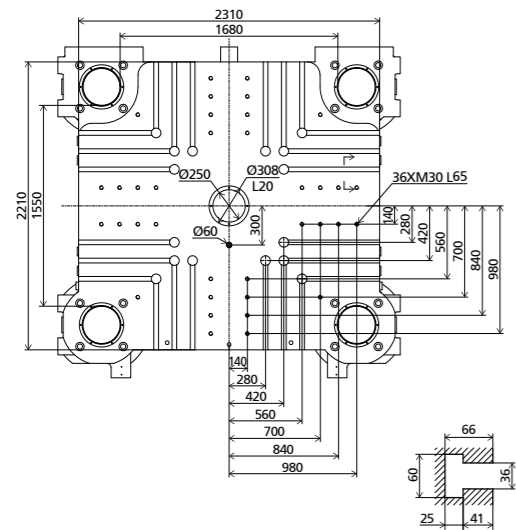
Clamping Unit



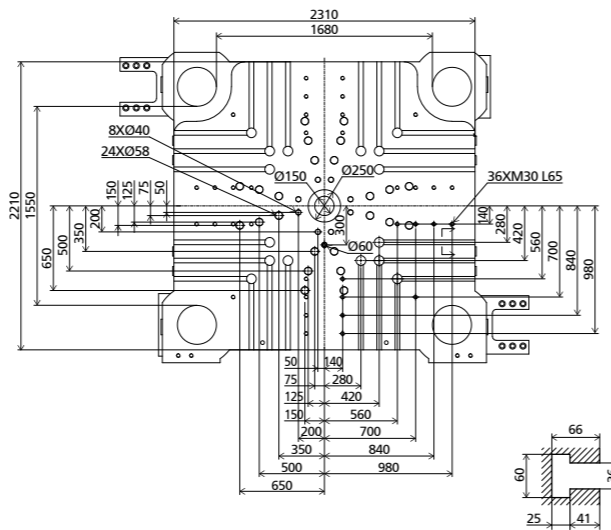
Front view



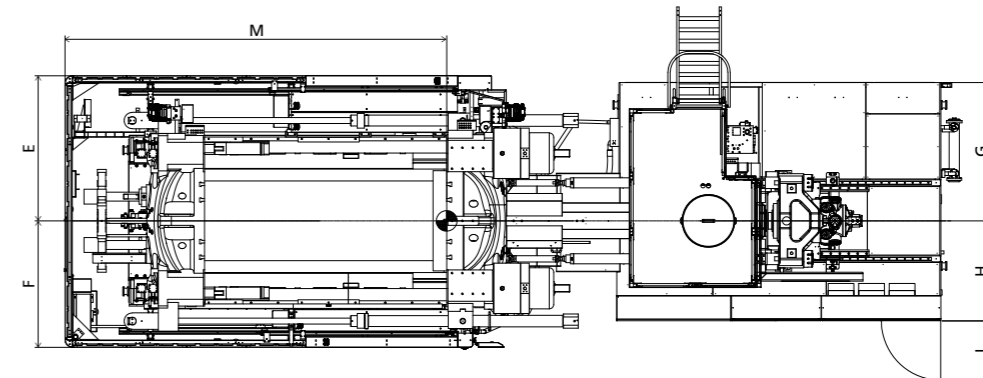
Fixed platen dimensions



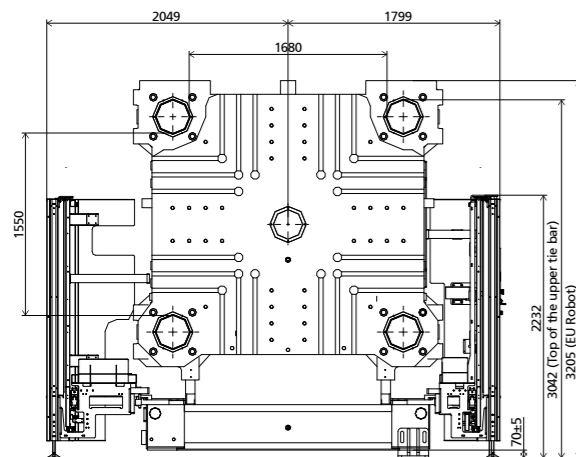
Moving platen dimensions



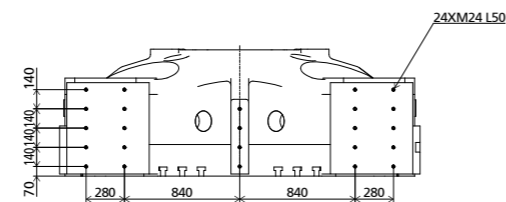
Top view



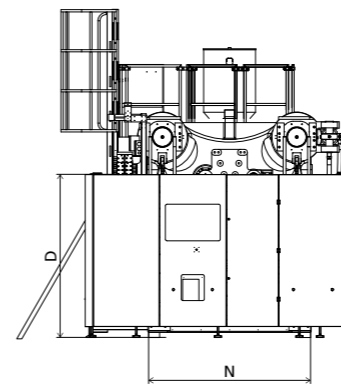
Robot Mechanical interface



Robot top view fixed platen



Side view



Standard

	INJECTION UNIT									DIMENSIONS (mm)			
	A	B	C	D	E	F	G	H	I	J	K	M	N
11200	3205	3036	3261	2200	2049	1799	1303	1219	596	6306	5821	5321	2388
16600	3205	3036	4413	2200	2049	1799	1855	1342	796	6306	6060	5321	2388
20200	3205	3036	4413	2200	2049	1799	1935	1422	796	6306	6452	5321	2388
28900	3205	3036	4413	2200	2049	1799	1935	1422	796	6306	7440	5321	2388



JU21000 V /SE

MACHINE TYPE			JU21000 V /SE																			
CLAMPING UNIT	Clamping force	kN	21000																			
	Mold opening stroke ^①	mm	2700/1800																			
	Mold height min.	mm	800																			
	Mold height max.	mm	1700																			
	Total daylight max.	mm	3500																			
	Dist. between tie-bars (H×V)	mm	1800×1600																			
	Ejector stroke	mm	450																			
	Ejector force	kN	450																			
	Mold weight max. ^②	t	50																			
INJECTION UNIT			11200				16600				20200				28900				41000			
			A	B	C	D	A	B	C	A	B	C	D	A	B	A	B	A	B			
	Screw diameter	mm	110	120	130	140	130	140	150	140	150	160	170	160	170	170	185	170	185			
	Screw L/D ratio	L/D	26.2	24	22.2	20.6	24	22.3	20.8	24	22.4	21	19.8	24	22.6	23.5	21.6	23.5	21.6			
	Injection volume (theoretical)	cm ³	5226	6220	7300	8466	8362	9698	11133	10467	12016	13672	15434	17492	19747	23378	27686	23378	27686			
	Injection weight (PS)	g	4756	5660	6643	7704	7609	8825	10131	9525	10935	12441	14045	15918	17970	21274	25194	21274	25194			
	Injection rate (PS)	g/s	1114	1325	1555	1804	1197	1389	1594	1298	1490	1696	1914	1515	1711	1437	1702	1437	1702			
	Injection pressure	MPa	213	179	153	132	198	171	149	193	168	147	130	165	146	174	147	174	147			
	Plasticizing rate (GPPS) ^③	g/s	123.0	142.0	164.0	187.0	168.0	192.0	220.0	155.0	176.0	196.0	222.0	\	\	\	\	\	\			
	Plasticizing rate (HDPE) ^④	g/s	187.0	217.0	240.0	273.0	252.0	283.0	336.0	243.0	294.0	303.0	334.0	280.0	310.0	309.0	320.0	309.0	320.0			
Screw speed	rpm	125				102				85				72				70				
OTHERS	Pump motor power	kW	195				195				205				205				205			
	Heater power	kW	104				124				137				179				211			
	Machine dimension (L×W×H) ^⑤	m	12.28×3.97×3.38				13.34×3.97×4.39				13.42×3.97×4.39				14.38×3.97×4.39				15.23×3.97×4.39			
	Machine weight	t	89				94				98				101				109			
	Hopper capacity (OP)	kg	100				400				400				400				400			
	Oil tank ^⑥	l	1250				1550				1750				1920				2390			

NOTE:

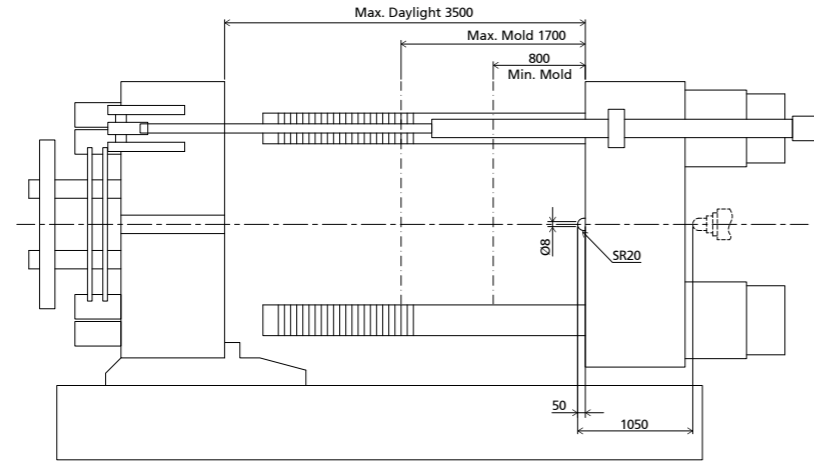
- ① With min. mold height / with max. mold height.
- ② Moving platen: 2/3 of max. mold weight.
- ③ Plasticizing capacity (GPPS): GB standard, with application of GPPS plasticizing capacity of 3-zone screws.
- ④ Plasticizing capacity (HDPE): Euromap 19, with application of HDPE plasticizing capacity of barrier screws.
- ⑤ The size is the net size of the machine, excluding the width of the feeding platform and the working platform.
- ⑥ The oil tank volume refers to the volume of the oil tank itself, excluding the volume in cylinder and pipeline. In this sense, the customer is advised to prepare the hydraulic oil according to 1.35 times of the oil tank volume.
The above plasticizing capacity is for reference only.

We reserve the right to make changes as a result of further technical advantages.

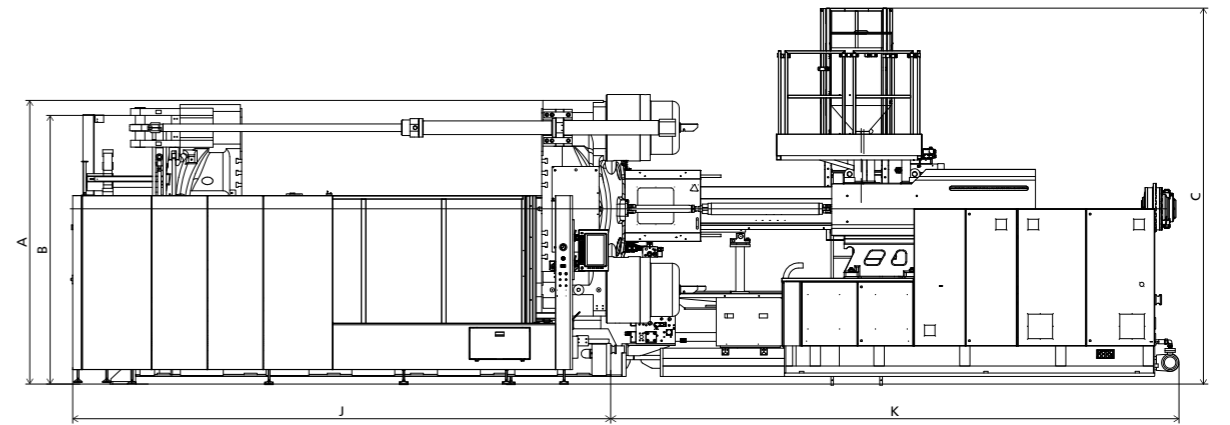


DIMENSIONS JU21000 V/SE

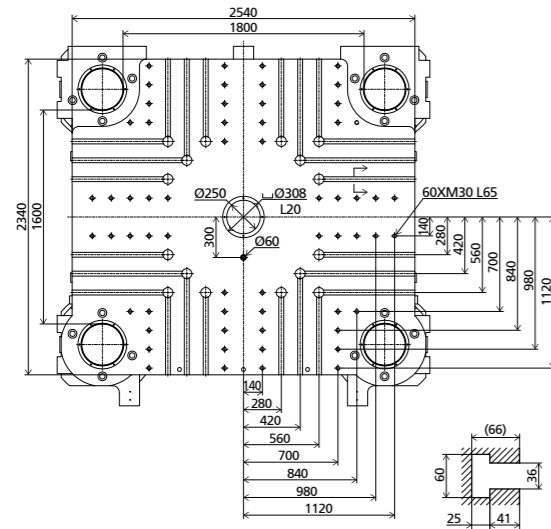
Clamping Unit



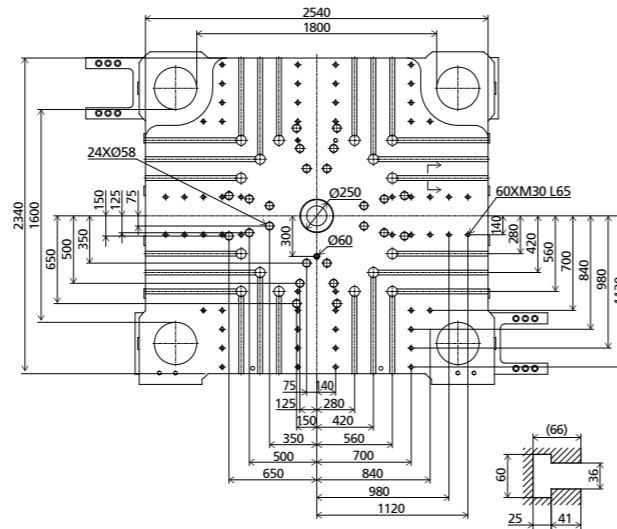
Front view



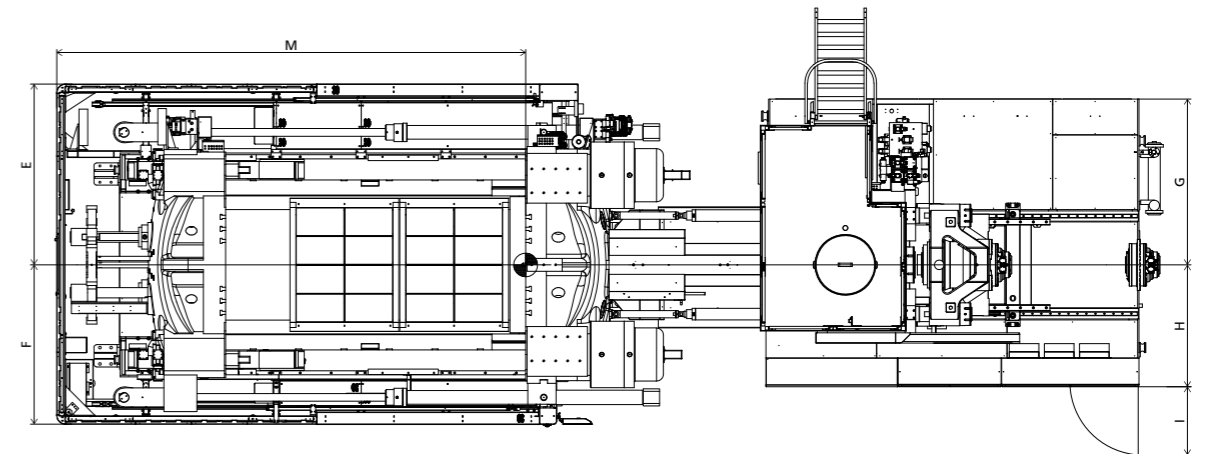
Fixed platen dimensions



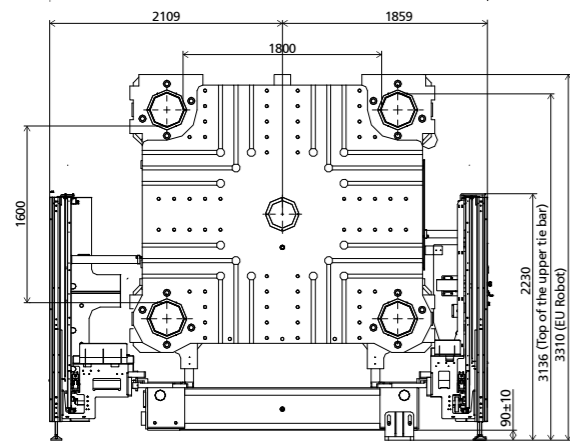
Moving platen dimensions



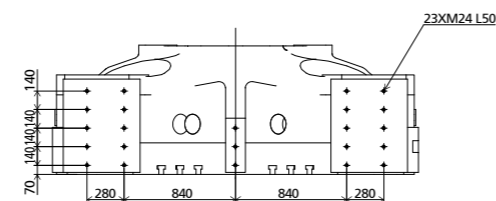
Top view



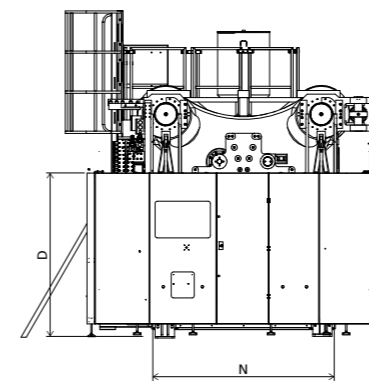
Robot Mechanical interface



Robot top view fixed platen



Side view



Standard

	INJECTION UNIT								DIMENSIONS (mm)				
	A	B	C	D	E	F	G	H	I	J	K	M	N
11200	3310	3136	3378	2200	2109	1859	1303	1219	596	6456	5821	5471	2442
16600	3310	3136	4387	2200	2109	1859	1855	1342	796	6456	6060	5471	2442
20200	3310	3136	4387	2200	2109	1859	1935	1422	796	6456	6452	5471	2442
28900	3310	3136	4387	2200	2109	1859	1935	1422	796	6456	7440	5471	2442
41000	3310	3136	4387	2200	2109	1859	1965	1452	796	6456	8147	5471	2442



JU24000 V /SE

MACHINE TYPE		JU24000 V /SE												
CLAMPING UNIT	Clamping force	kN	24000											
	Mold opening stroke ^①	mm	3000/2000											
	Mold height min.	mm	800											
	Mold height max.	mm	1800											
	Total daylight max.	mm	3800											
	Dist. between tie-bars (H×V)	mm	1900×1700											
	Ejector stroke	mm	500											
	Ejector force	kN	450											
	Mold weight max. ^②	t	59											
			16600			20200			28900			41000		
			A	B	C	A	B	C	D	A	B	A	B	
INJECTION UNIT	Screw diameter	mm	130	140	150	140	150	160	170	160	170	170	185	
	Screw L/D ratio	L/D	24	22.3	20.8	24	22.4	21	19.8	24	22.6	23.5	21.6	
	Injection volume (theoretical)	cm ³	8362	9698	11133	10467	12016	13672	15434	17492	19747	23378	27686	
	Injection weight (PS)	g	7609	8825	10131	9525	10935	12441	14045	15918	17970	21274	25194	
	Injection rate (PS)	g/s	1260	1462	1678	1298	1490	1696	1914	1515	1711	1437	1702	
	Injection pressure	MPa	198	171	149	193	168	147	130	165	146	174	147	
	Plasticizing rate (GPPS) ^③	g/s	168.0	192.0	220.0	155.0	176.0	196.0	222.0	\	\	\	\	
	Plasticizing rate (HDPE) ^④	g/s	252.0	283.0	336.0	243.0	294.0	303.0	334.0	280.0	310.0	309.0	320.0	
	Screw speed	rpm		114			85			72			70	
OTHERS	Pump motor power	kW	205			205			205			205		
	Heater power	kW	124			137			179			211		
	Machine dimension (L×W×H) ^⑤	m	13.81×4.19×4.40			13.90×4.19×4.40			14.85×4.19×4.40			15.70×4.19×4.40		
	Machine weight	t	109			113			115			123		
	Hopper capacity (OP)	kg	400			400			400			400		
	Oil tank ^⑥	l	1550			1750			1920			2390		

NOTE:

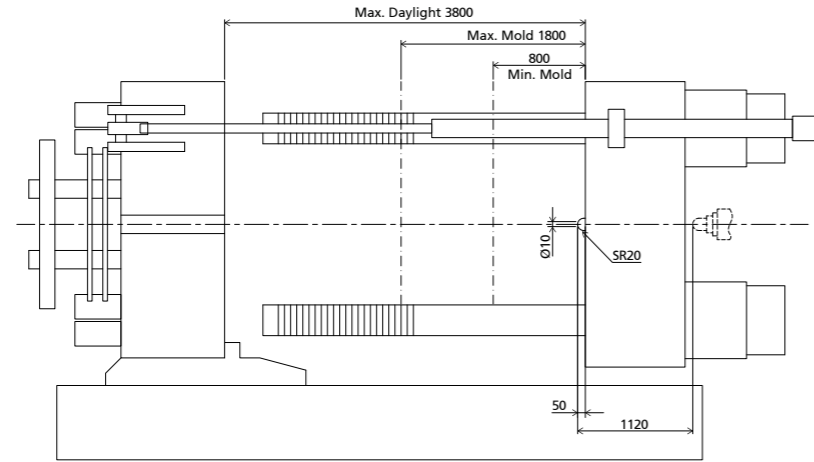
- ① With min. mold height / with max. mold height.
- ② Moving platen: 2/3 of max. mold weight.
- ③ Plasticizing capacity (GPPS): GB standard, with application of GPPS plasticizing capacity of 3-zone screws.
- ④ Plasticizing capacity (HDPE): Euromap 19, with application of HDPE plasticizing capacity of barrier screws.
- ⑤ The size is the net size of the machine, excluding the width of the feeding platform and the working platform.
- ⑥ The oil tank volume refers to the volume of the oil tank itself, excluding the volume in cylinder and pipeline. In this sense, the customer is advised to prepare the hydraulic oil according to 1.35 times of the oil tank volume.
The above plasticizing capacity is for reference only.

We reserve the right to make changes as a result of further technical advantages.

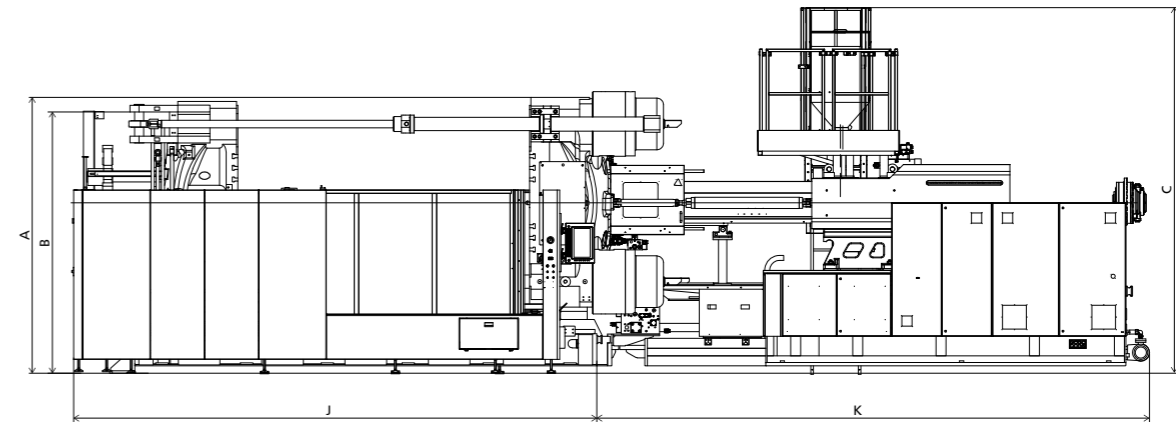


DIMENSIONS JU24000 V/SE

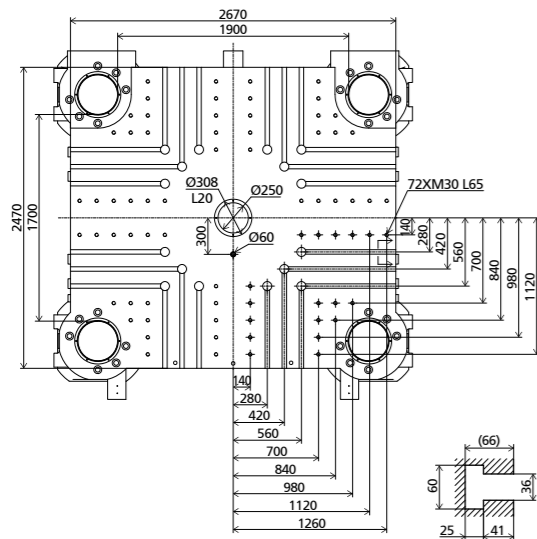
Clamping Unit



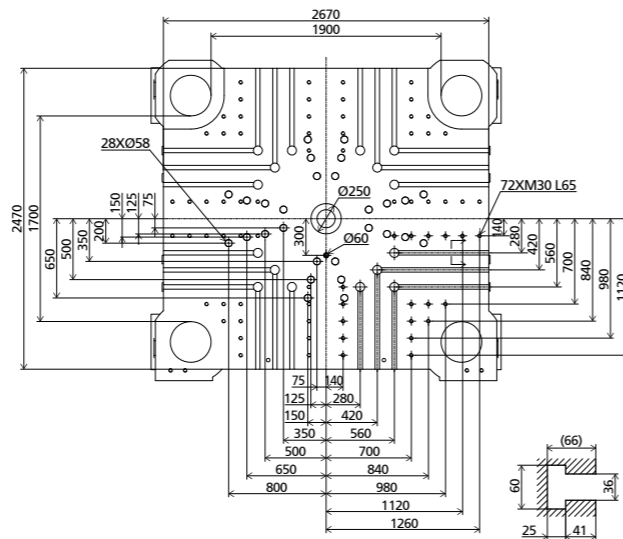
Front view



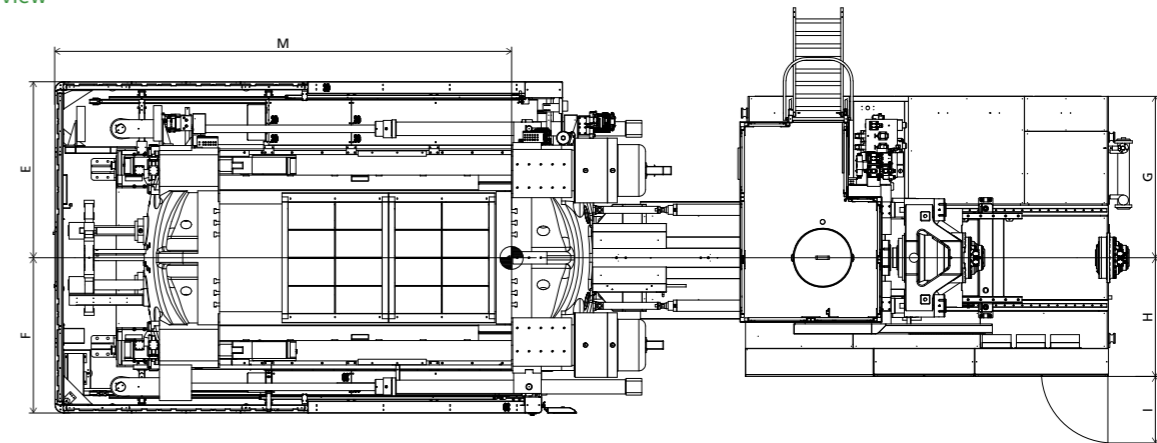
Fixed platen dimensions



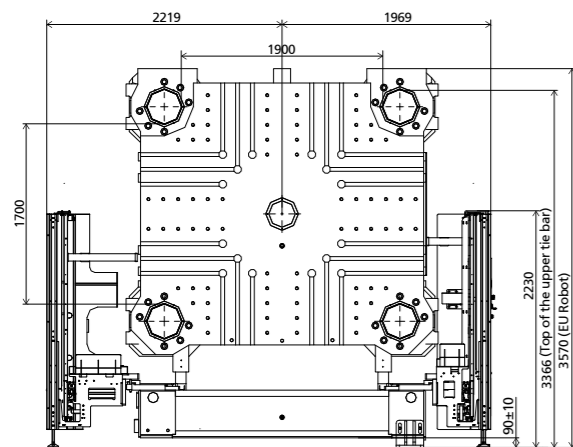
Moving platen dimensions



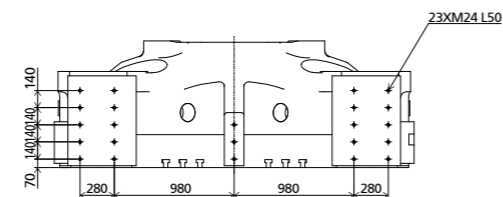
Top view



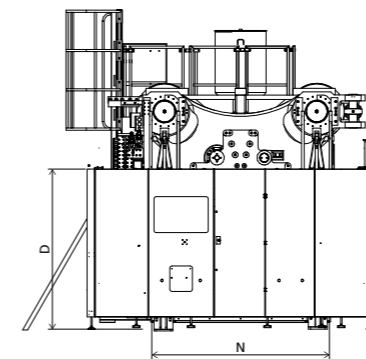
Robot Mechanical interface



Robot top view fixed platen



Side view



Standard

	INJECTION UNIT								DIMENSIONS (mm)				
	A	B	C	D	E	F	G	H	I	J	K	M	N
16600	3570	3366	4395	2200	2219	1969	1855	1342	796	6932	6060	5917	2672
20200	3570	3366	4395	2200	2219	1969	1935	1422	796	6932	6452	5917	2672
28900	3570	3366	4395	2200	2219	1969	1935	1422	796	6932	7440	5917	2672
41000	3570	3366	4395	2200	2219	1969	1965	1452	796	6932	8147	5917	2672



JU28000 V /SE

MACHINE TYPE		JU28000 V /SE										
CLAMPING UNIT	Clamping force	kN	28000									
	Mold opening stroke ^①	mm	3300/2100									
	Mold height min.	mm	800									
	Mold height max.	mm	2000									
	Total daylight max.	mm	4100									
	Dist. between tie-bars (H×V)	mm	2000×1800									
	Ejector stroke	mm	500									
	Ejector force	kN	450									
	Mold weight max. ^②	t	66									
			20200				28900		41000		52000	61000
			A	B	C	D	A	B	A	B	B	B
INJECTION UNIT	Screw diameter	mm	140	150	160	170	160	170	170	185	200	220
	Screw L/D ratio	L/D	24	22.4	21	19.8	24	22.6	23.5	21.6	20	20.5
	Injection volume (theoretical)	cm ³	10467	12016	13672	15434	17492	19747	23378	27686	35185	45615
	Injection weight (PS)	g	9525	10935	12441	14045	15918	17970	21274	25194	32019	41510
	Injection rate (PS)	g/s	1298	1490	1696	1914	1515	1711	1437	1702	2140	2366
	Injection pressure	MPa	193	168	147	130	165	146	174	147	147	133
	Plasticizing rate (GPPS) ^③	g/s	155.0	176.0	196.0	222.0	\	\	\	\	\	\
	Plasticizing rate (HDPE) ^④	g/s	243.0	294.0	303.0	334.0	280.0	310.0	309.0	320.0	380.0	370.0
Screw speed	rpm	94				81		70		70	53	
OTHERS	Pump motor power	kW	205				205		205		255	255
	Heater power	kW	137				179		211		211	228
	Machine dimension (L×W×H) ^⑤	m	14.37×4.29×4.42				15.32×4.29×4.42		16.17×4.29×4.45		16.43×4.29×4.46	17.34×4.29×4.46
	Machine weight	t	131				132		139		143	147
	Hopper capacity (OP)	kg	400				400		400		400	400
	Oil tank ^⑥	l	1750				1920		2390		2900	2900

NOTE:

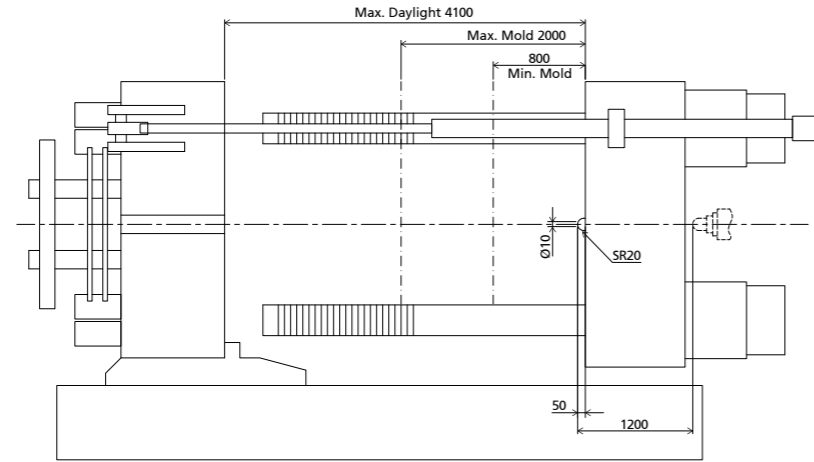
- ① With min. mold height / with max. mold height.
- ② Moving platen: 2/3 of max. mold weight.
- ③ Plasticizing capacity (GPPS): GB standard, with application of GPPS plasticizing capacity of 3-zone screws.
- ④ Plasticizing capacity (HDPE): Euromap 19, with application of HDPE plasticizing capacity of barrier screws.
- ⑤ The size is the net size of the machine, excluding the width of the feeding platform and the working platform.
- ⑥ The oil tank volume refers to the volume of the oil tank itself, excluding the volume in cylinder and pipeline. In this sense, the customer is advised to prepare the hydraulic oil according to 1.35 times of the oil tank volume.
The above plasticizing capacity is for reference only.

We reserve the right to make changes as a result of further technical advantages.

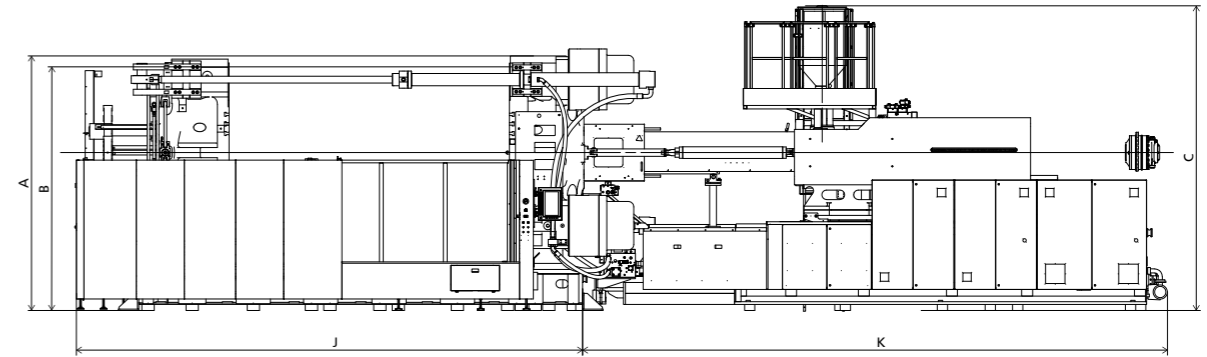


DIMENSIONS JU28000 V/SE

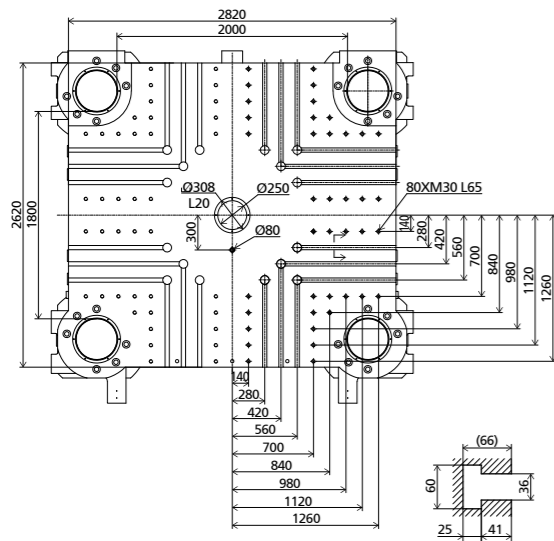
Clamping Unit



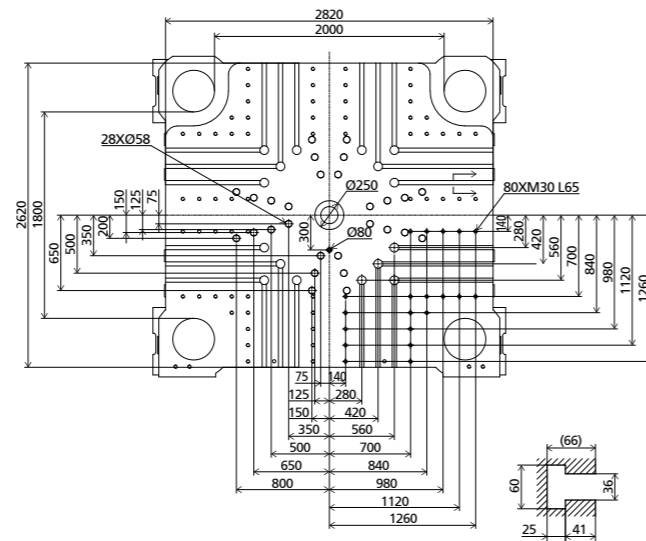
Front view



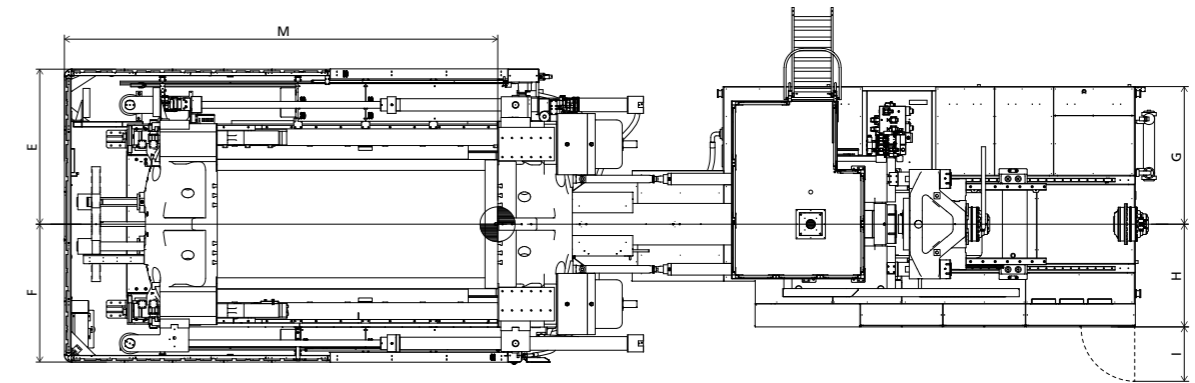
Fixed platen dimensions



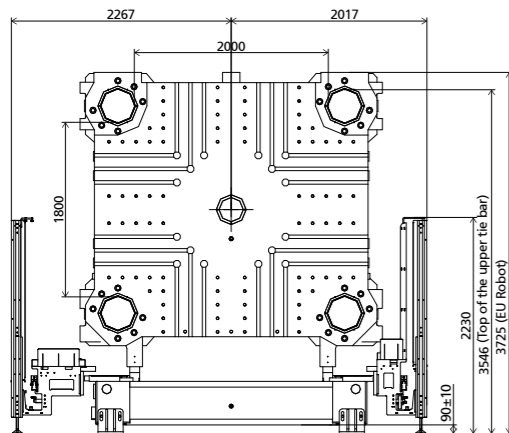
Moving platen dimensions



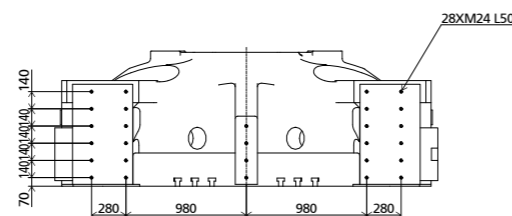
Top view



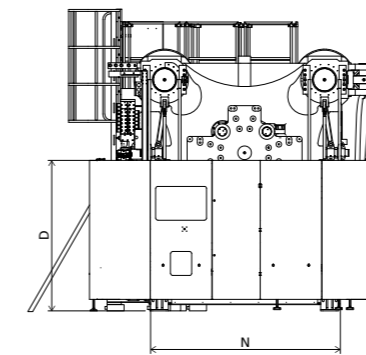
Robot Mechanical interface



Robot top view fixed platen



Side view



Standard

	INJECTION UNIT									DIMENSIONS (mm)			
	A	B	C	D	E	F	G	H	I	J	K	M	N
20200	3725	3546	4412	2200	2267	2017	1935	1422	796	7403	6452	6333	2767
28900	3725	3546	4412	2200	2267	2017	1935	1422	796	7403	7440	6333	2767
41000	3725	3546	4447	2200	2267	2017	1965	1452	796	7403	7947	6333	2767
52000	3725	3546	4458	2200	2267	2017	2010	1502	796	7403	8355	6333	2767
61000	3725	3546	4458	2200	2267	2017	2010	1502	796	7403	9095	6333	2767



JU33000 V /SE

MACHINE TYPE		JU33000 V /SE										
CLAMPING UNIT	Clamping force	kN	33000									
	Mold opening stroke ^①	mm	3200/2200									
	Mold height min.	mm	1000									
	Mold height max.	mm	2000									
	Total daylight max.	mm	4200									
	Dist. between tie-bars (H×V)	mm	2270×1900									
	Ejector stroke	mm	550									
	Ejector force	kN	580									
	Mold weight max. ^②	t	75									
			20200				28900		41000		52000	61000
			A	B	C	D	A	B	A	B		
INJECTION UNIT	Screw diameter	mm	140	150	160	170	160	170	170	185	200	220
	Screw L/D ratio	L/D	24	22.4	21	19.8	24	22.6	23.5	21.6	20	20.5
	Injection volume (theoretical)	cm ³	10467	12016	13672	15434	17492	19747	23378	27686	35185	45615
	Injection weight (PS)	g	9525	10935	12441	14045	15918	17970	21274	25194	32019	41510
	Injection rate (PS)	g/s	1298	1490	1696	1914	1515	1711	1437	1702	2140	2366
	Injection pressure	MPa	193	168	147	130	165	146	174	147	147	133
	Plasticizing rate (GPPS) ^③	g/s	155.0	176.0	196.0	222.0	\	\	\	\	\	\
	Plasticizing rate (HDPE) ^④	g/s	243.0	294.0	303.0	334.0	280.0	310.0	309.0	320.0	380.0	370.0
Screw speed	rpm	94				81		70		70	53	
OTHERS	Pump motor power	kW	205				205		205		255	255
	Heater power	kW	137				179		211		211	228
	Machine dimension (L×W×H) ^⑤	m	14.83×4.65×4.55				15.78×4.65×4.56		16.63×4.65×4.61		16.89×4.65×4.62	17.79×4.65×4.62
	Machine weight	t	158				160		168		172	175
	Hopper capacity (OP)	kg	400				400		400		400	400
	Oil tank ^⑥	l	1750				1920		2390		2900	2900

NOTE:

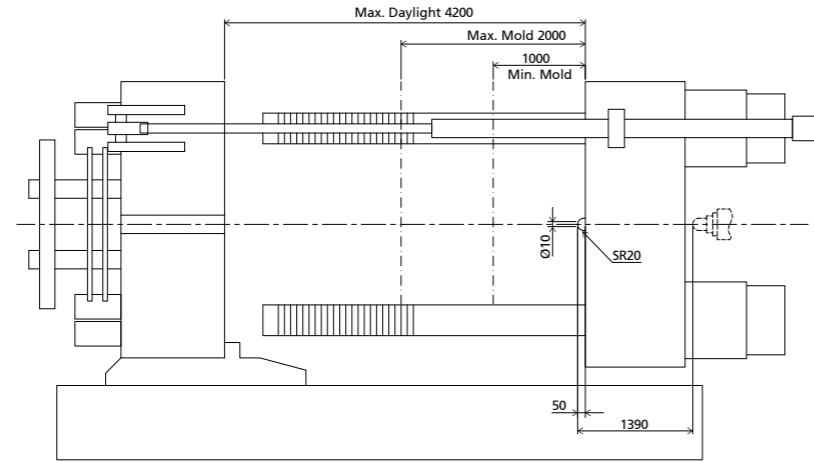
- ① With min. mold height / with max. mold height.
- ② Moving platen: 2/3 of max. mold weight.
- ③ Plasticizing capacity (GPPS): GB standard, with application of GPPS plasticizing capacity of 3-zone screws.
- ④ Plasticizing capacity (HDPE): Euromap 19, with application of HDPE plasticizing capacity of barrier screws.
- ⑤ The size is the net size of the machine, excluding the width of the feeding platform and the working platform.
- ⑥ The oil tank volume refers to the volume of the oil tank itself, excluding the volume in cylinder and pipeline. In this sense, the customer is advised to prepare the hydraulic oil according to 1.35 times of the oil tank volume.
The above plasticizing capacity is for reference only.

We reserve the right to make changes as a result of further technical advantages.

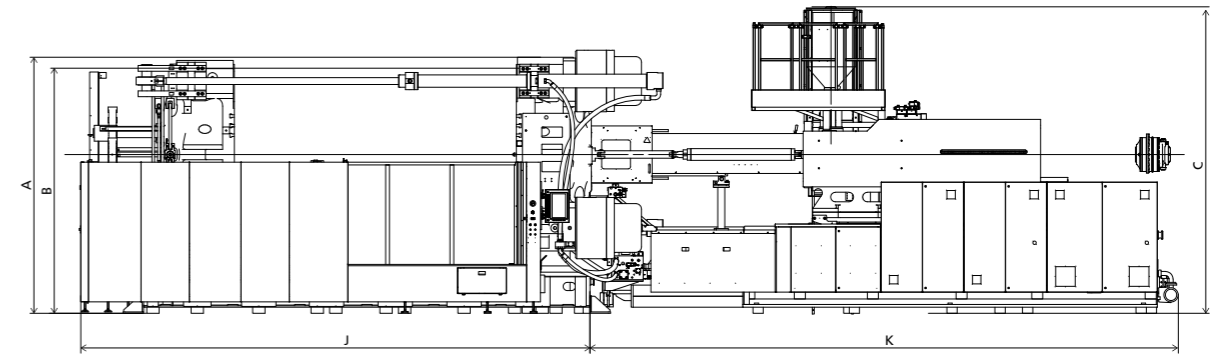


DIMENSIONS JU33000 V/SE

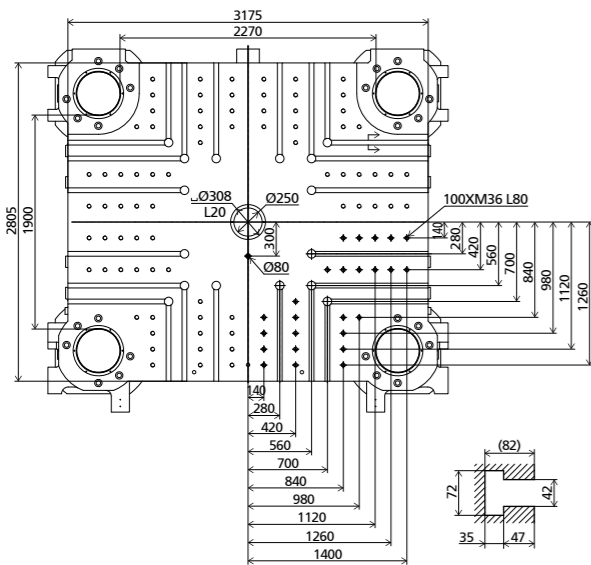
Clamping Unit



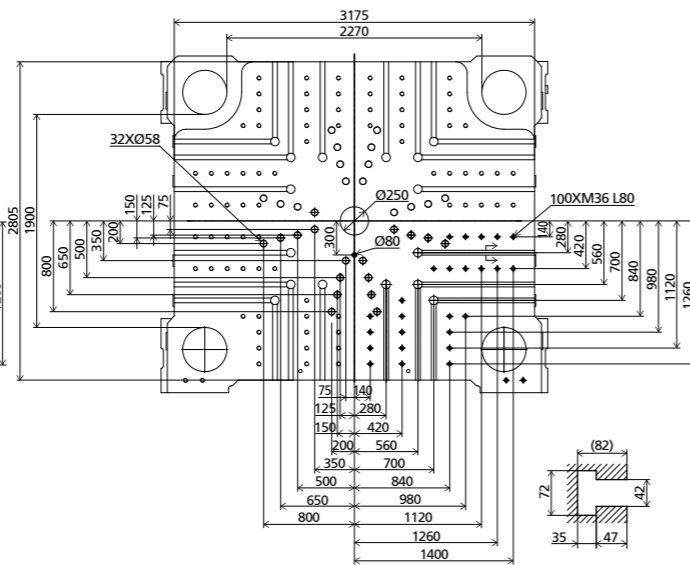
Front view



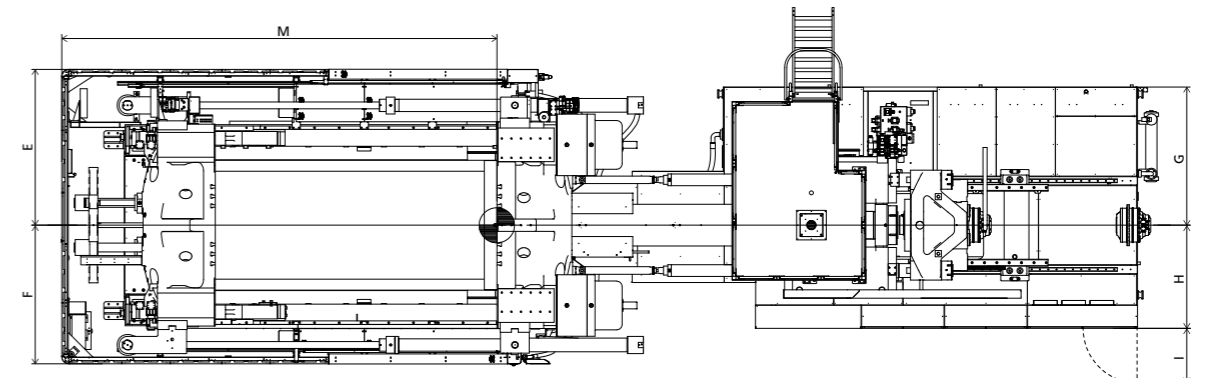
Fixed platen dimensions



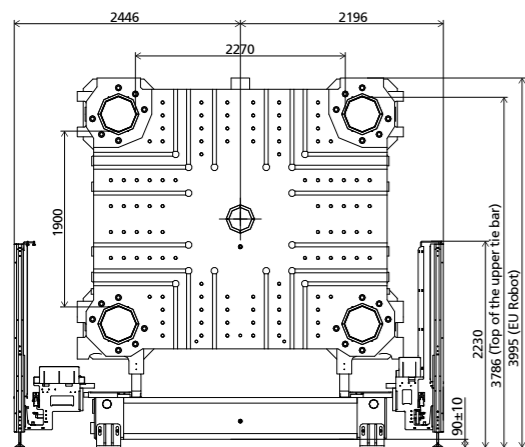
Moving platen dimensions



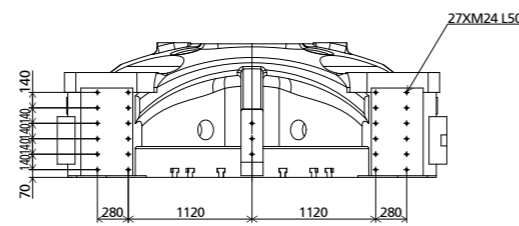
Top view



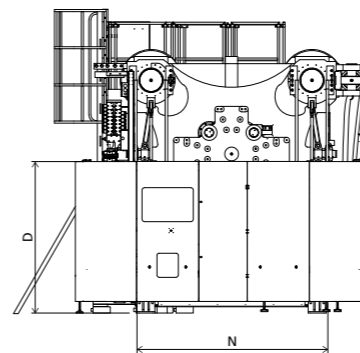
Robot Mechanical interface



Robot top view fixed platen



Side view



Standard

	INJECTION UNIT									DIMENSIONS (mm)			
	A	B	C	D	E	F	G	H	I	J	K	M	N
20200	3995	3786	4548	2200	2446	2196	1935	1422	796	7858	6452	6688	3126
28900	3995	3786	4558	2200	2446	2196	1935	1422	796	7858	7440	6688	3126
41000	3995	3786	4607	2200	2446	2196	1965	1452	796	7858	7947	6688	3126
52000	3995	3786	4618	2200	2446	2196	2010	1502	796	7858	8355	6688	3126
61000	3995	3786	4618	2200	2446	2196	2010	1502	796	7858	8895	6688	3126



JU40000 V /SE

MACHINE TYPE		JU40000 V /SE		
CLAMPING UNIT	Clamping force	kN	40000	
	Mold opening stroke ^①	mm	3460/2260	
	Mold height min.	mm	1000	
	Mold height max.	mm	2200	
	Total daylight max.	mm	4460	
	Dist. between tie-bars (H×V)	mm	2400×2000	
	Ejector stroke	mm	550	
	Ejector force	kN	580	
	Mold weight max. ^②	t	86	
		94000	106000	
INJECTION UNIT	Screw diameter	mm	240	260
	Screw L/D ratio	L/D	23	23
	Injection volume (theoretical)	cm ³	60167	80170
	Injection weight (PS)	g	54752	72955
	Injection rate (PS)	g/s	2893	3162.3
	Injection pressure	MPa	155	133
	Plasticizing rate (GPPS) ^③	g/s	\	\
	Plasticizing rate (HDPE) ^④	g/s	470.0	500.0
Screw speed	rpm	50	42	
OTHERS	Pump motor power	kW	360	360
	Heater power	kW	296	320
	Machine dimension (L×W×H) ^⑤	m	20.05×5.23×4.73	20.65×5.23×4.73
	Machine weight	t	220	225
	Hopper capacity (OP)	kg	600	600
Oil tank ^⑥	l	3470	3470	

NOTE:

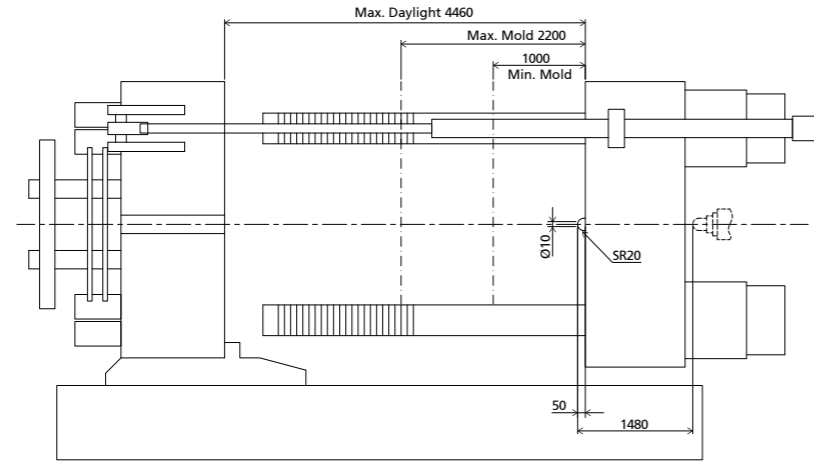
- ① With min. mold height / with max. mold height.
- ② Moving platen: 2/3 of max. mold weight.
- ③ Plasticizing capacity (GPPS): GB standard, with application of GPPS plasticizing capacity of 3-zone screws.
- ④ Plasticizing capacity (HDPE): Euromap 19, with application of HDPE plasticizing capacity of barrier screws.
- ⑤ The size is the net size of the machine, excluding the width of the feeding platform and the working platform.
- ⑥ The oil tank volume refers to the volume of the oil tank itself, excluding the volume in cylinder and pipeline. In this sense, the customer is advised to prepare the hydraulic oil according to 1.35 times of the oil tank volume.
The above plasticizing capacity is for reference only.

We reserve the right to make changes as a result of further technical advantages.

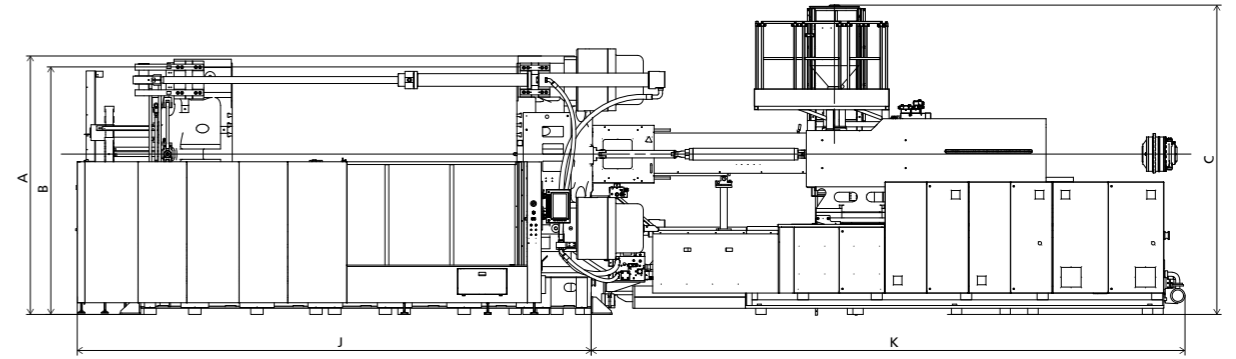


DIMENSIONS JU40000 V/SE

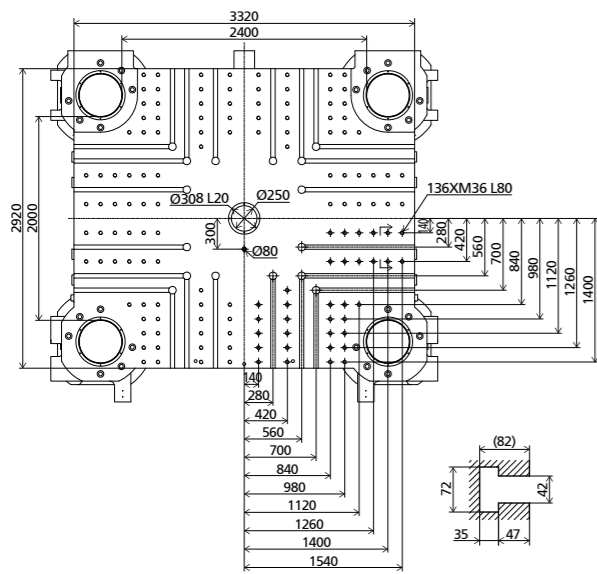
Clamping Unit



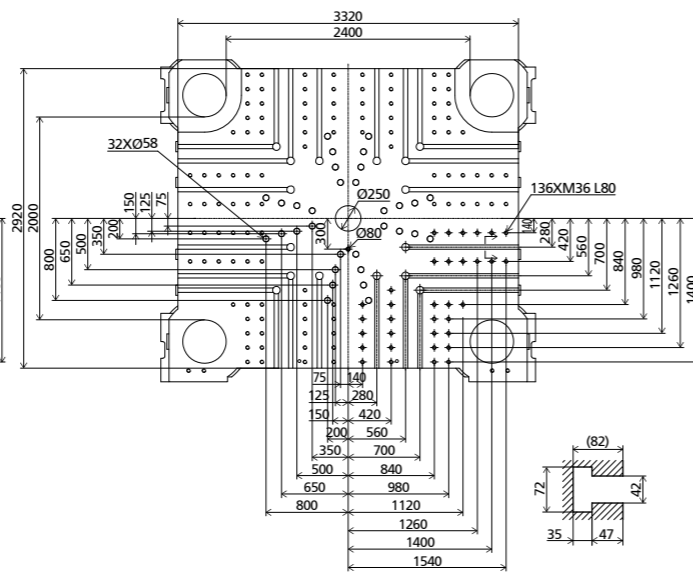
Front view



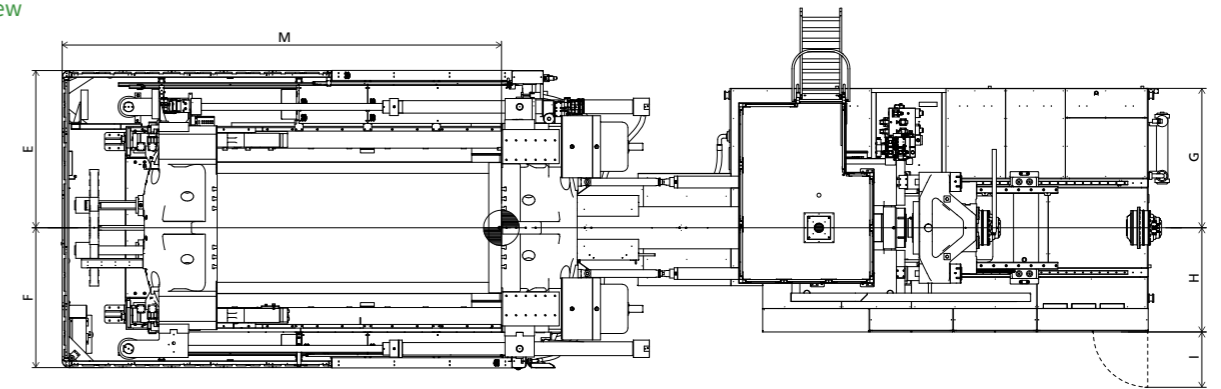
Fixed platen dimensions



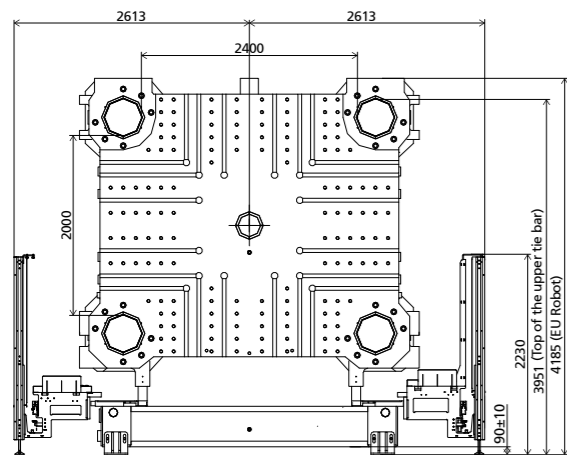
Moving platen dimensions



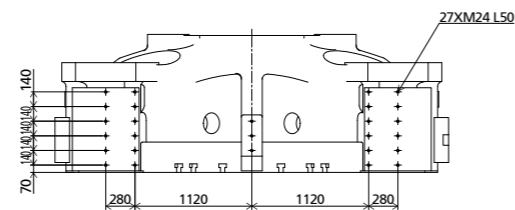
Top view



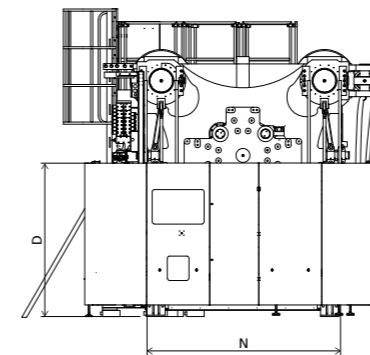
Robot Mechanical interface



Robot top view fixed platen



Side view



Standard

	INJECTION UNIT								DIMENSIONS (mm)				
	A	B	C	D	E	F	G	H	I	J	K	M	N
94000	4185	3951	4723	2200	2613	2613	2085	1562	796	8243	10288	6983	3260
106000	4185	3951	4723	2200	2613	2613	2085	1562	796	8243	10888	6983	3260



JU55000 V /SE

MACHINE TYPE			JU55000 V /SE	
CLAMPING UNIT	Clamping force	kN		55000
	Mold opening stroke ^①	mm		3500/4700
	Mold height min.	mm		1300
	Mold height max.	mm		2500
	Total daylight max.	mm		6000
	Dist. between tie-bars (H×V)	mm		2600×2600
	Ejector stroke	mm		600
	Ejector force	kN		800
	Mold weight max. ^②	t		130
		94000		106000
INJECTION UNIT	Screw diameter	mm	240	260
	Screw L/D ratio	L/D	23	23
	Injection volume (theoretical)	cm ³	60167	80170
	Injection weight (PS)	g	54752	72955
	Injection rate (PS)	g/s	2893	3396
	Injection pressure	MPa	155	132
	Plasticizing rate (GPPS) ^③	g/s	\	\
	Plasticizing rate (HDPE) ^④	g/s	470.0	500.0
Screw speed	rpm	50	42	
OTHERS	Pump motor power	kW	360	360
	Heater power	kW	296	320
	Machine dimension (L×W×H) ^⑤	m	21.88×5.71×5.30	22.48×5.71×5.30
	Machine weight	t	350	355
	Hopper capacity (OP)	kg	600	600
	Oil tank ^⑥	l	3470	3470

NOTE:

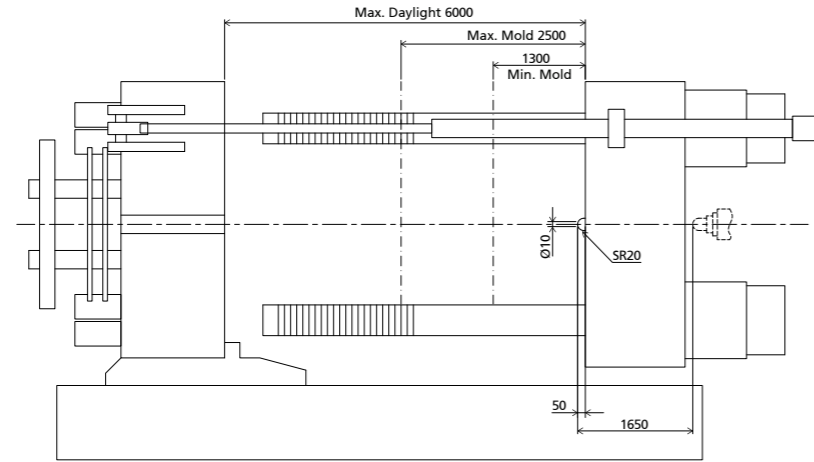
- ① With min. mold height / with max. mold height.
- ② Moving platen: 2/3 of max. mold weight.
- ③ Plasticizing capacity (GPPS): GB standard, with application of GPPS plasticizing capacity of 3-zone screws.
- ④ Plasticizing capacity (HDPE): Euromap 19, with application of HDPE plasticizing capacity of barrier screws.
- ⑤ The size is the net size of the machine, excluding the width of the feeding platform and the working platform.
- ⑥ The oil tank volume refers to the volume of the oil tank itself, excluding the volume in cylinder and pipeline. In this sense, the customer is advised to prepare the hydraulic oil according to 1.35 times of the oil tank volume.
The above plasticizing capacity is for reference only.

We reserve the right to make changes as a result of further technical advantages.

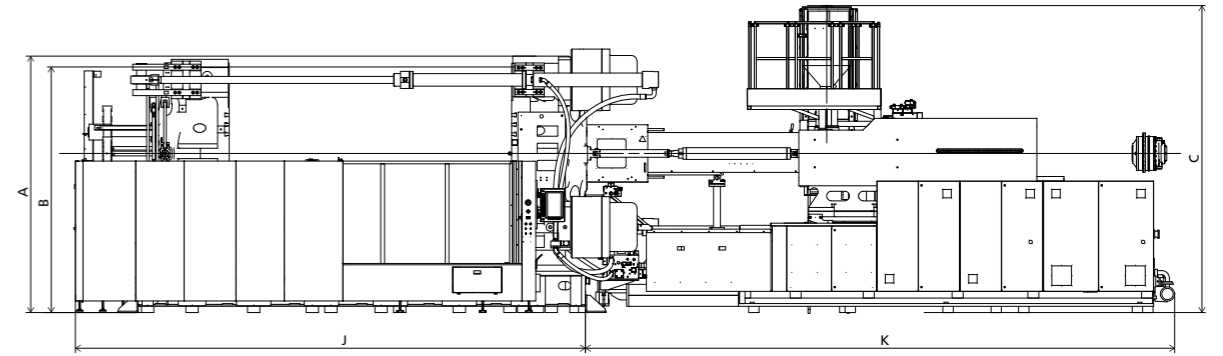


DIMENSIONS JU5500 V /SE

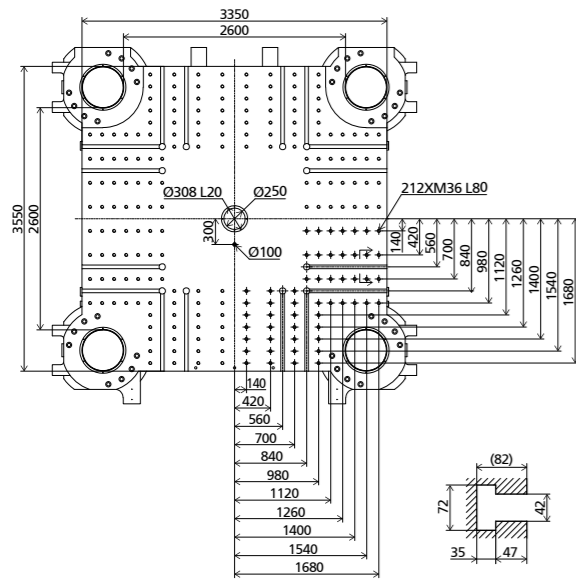
Clamping Unit



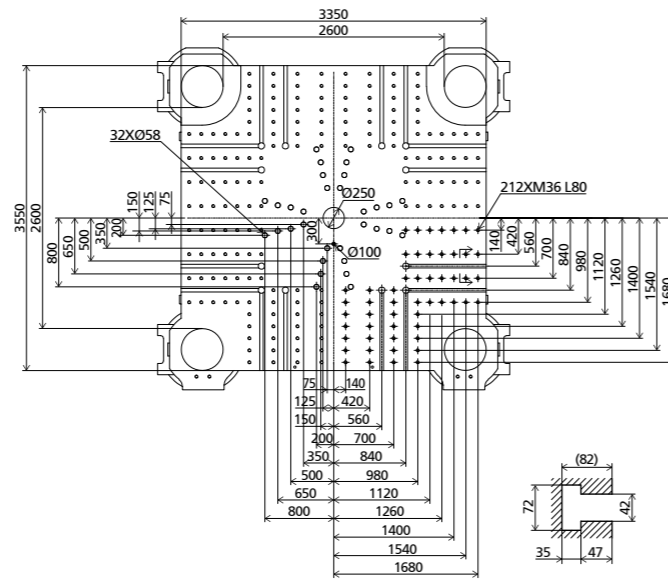
Front view



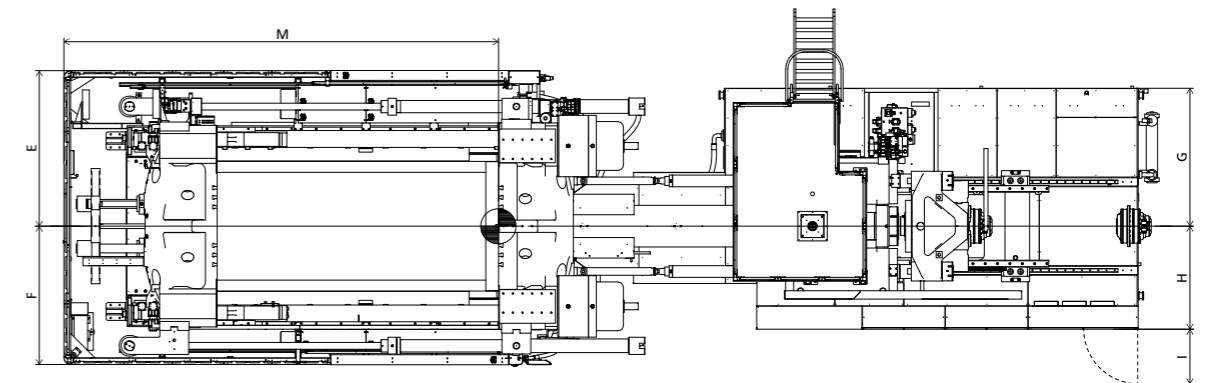
Fixed platen dimensions



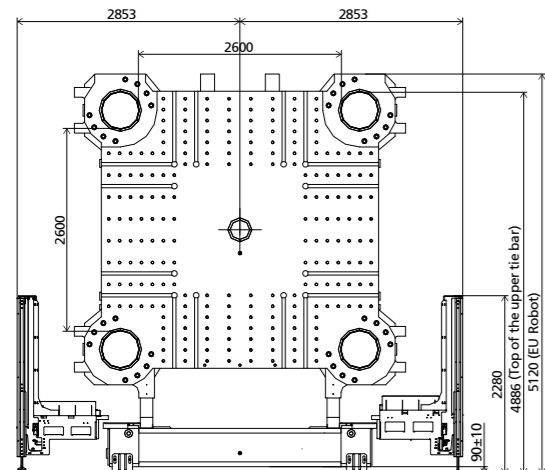
Moving platen dimensions



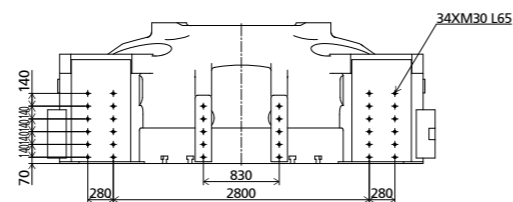
Top view



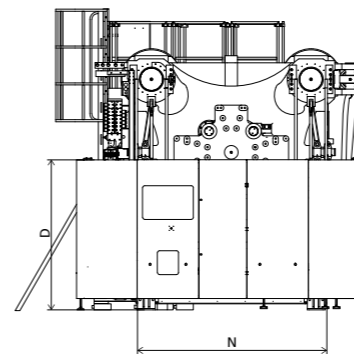
Robot Mechanical interface



Robot top view fixed platen



Side view



Standard

	INJECTION UNIT								DIMENSIONS (mm)				
	A	B	C	D	E	F	G	H	I	J	K	M	N
93500	5120	4886	5299	2250	2853	2853	2085	1562	796	10252	10288	8857	3340
106500	5120	4886	5299	2250	2853	2853	2085	1562	796	10252	10753	8857	3340

