

TECHNOLOGY TO THE POINT



SMART
TECHNOLOGY



FLEXIBLE
INTEGRATION



SUSTAINABLE
SOLUTIONS

HAITIAN PLASTICS MACHINERY GROUP CO., LTD.

No.1688, Haitian Road, Xiaogang, Beilun, Ningbo, Zhejiang, China 315801

+ 86-574-8617 7005 (China)

+ 86-574-8617 7242 (International)

haitian@mail.haitian.com

www.haitianpm.com

NINGBO HAITIAN HUAYUAN MACHINERY CO.,LTD.

No.1, Nanhuan Road, Export Processing Zone, Beilun, Ningbo, Zhejiang, China 315806

+86-574-8617 7242

+86-574-8622 1864

haitian@mail.haitian.com

www.haitianpm.com



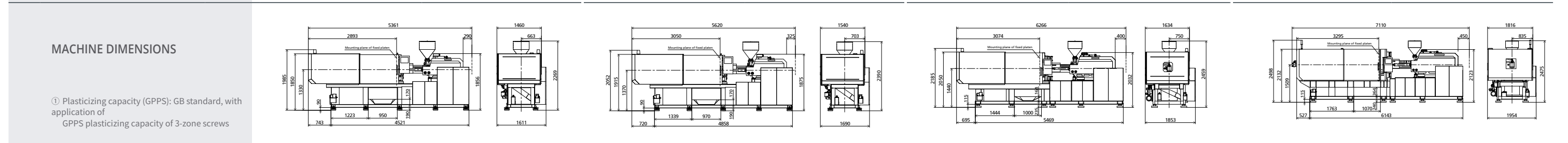
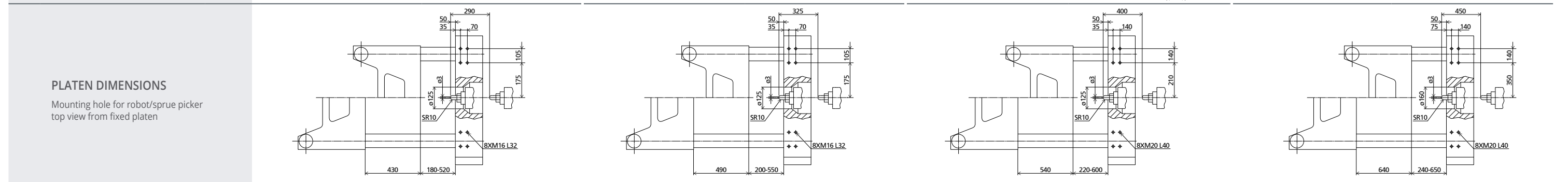
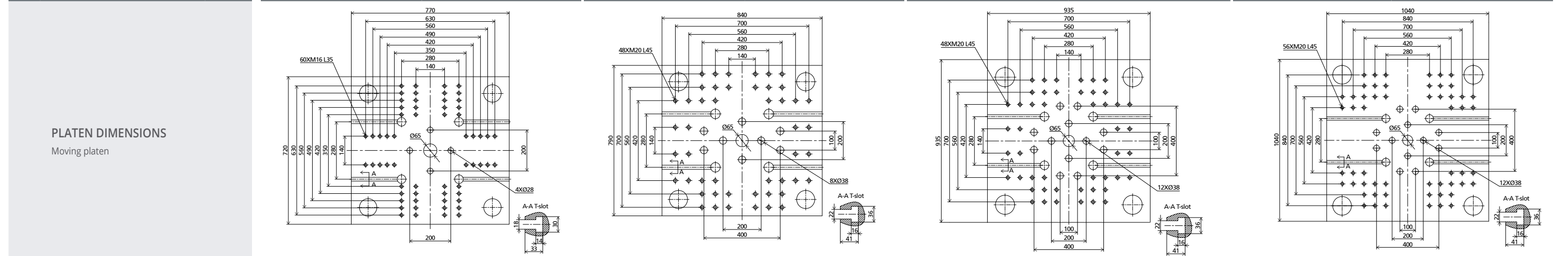
MA/h SERIES

SERVO-HYDRAULIC SOLUTION

1,700 - 10,000 kN

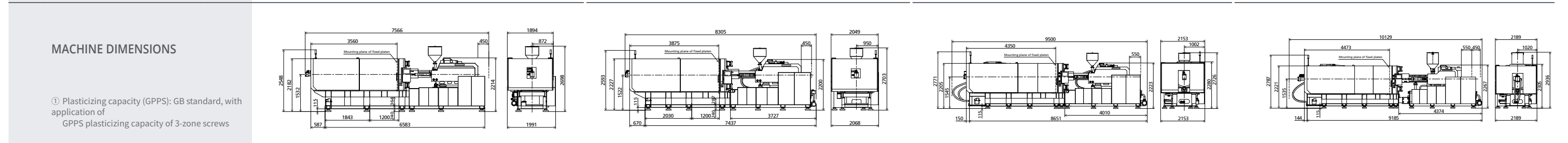
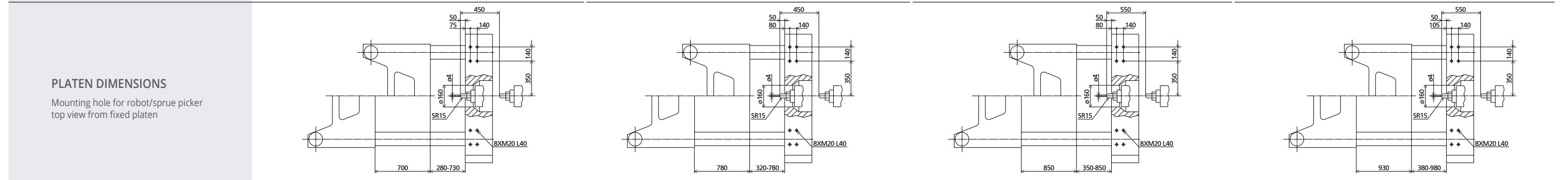
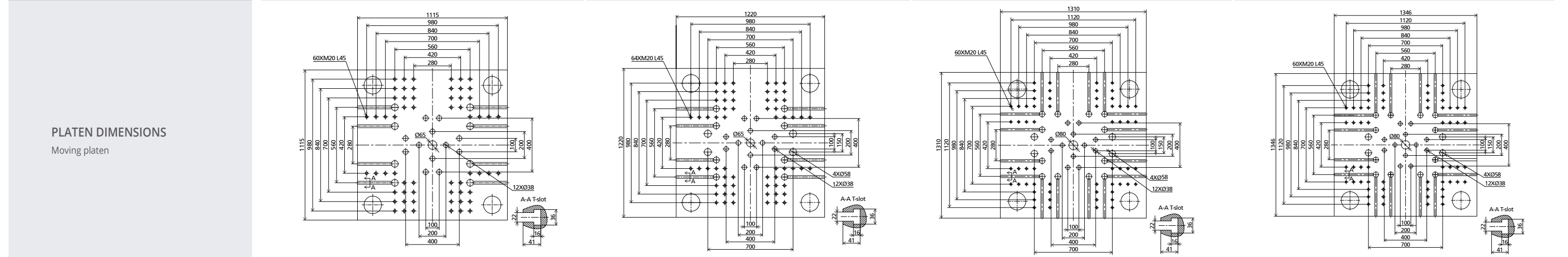
SPECIFICATION

MACHINE TYPE		MA1700 V /520h		MA2100 V /770h		MA2700 V /1050h		MA3300 V /1650h		
CLAMPING UNIT	Clamping force	1700		2100		2700		3300		
	Mold opening stroke	430		490		540		640		
	Mold height min.	180		200		220		240		
	Mold height max.	520		550		600		650		
	Dist. between tie-bars (H×V)	520×470		570×520		620×620		720×720		
INJECTION UNIT	Ejector stroke	140		150		150		160		
	Ejector force	34		67		67		67		
	Screw diameter	A	40	45	45	50	50	55	60	65
		B								
	Screw L/D ratio	22.5	20	22.2	20	22	20	21.7	20	
	Injection volume (theoretical)	251	318	366	452	497	601	848	995	
	Injection weight (PS)	229	289	333	411	452	547	772	906	
	Injection rate (PS)	229	289	289	357	357	432	515	604	
	Injection speed (max)	200		200		200		200		
	Injection pressure	207	163	211	171	212	175	193	165	
Plasticizing rate (GPPS)	28	36	32	40	45	52	68	78		
Screw speed	0-320		0-320		0-300		0-300			
OTHERS	Pump motor power	35		48		52		67		
	Heater power	15.96		21.4		24.9		33.83		
	Machine dimension (L×W×H)	5.4×1.6×2.3		5.6×1.7×2.4		6.3×1.9×2.5		7.1×2.0×2.5		
	Machine weight	6.3		7.8		10.4		14.5		
	Hopper capacity	50		50		50		50		
	Oil tank	220		275		365		470		



SPECIFICATION

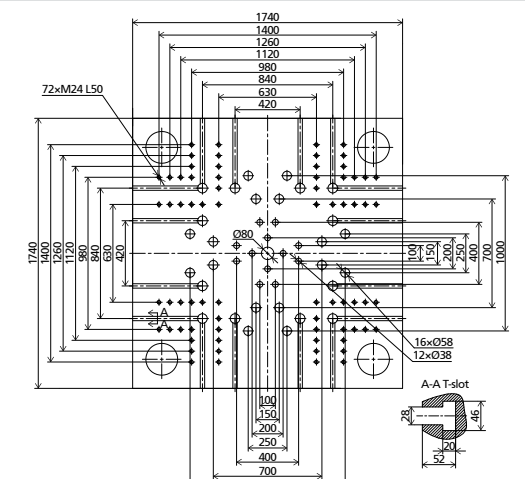
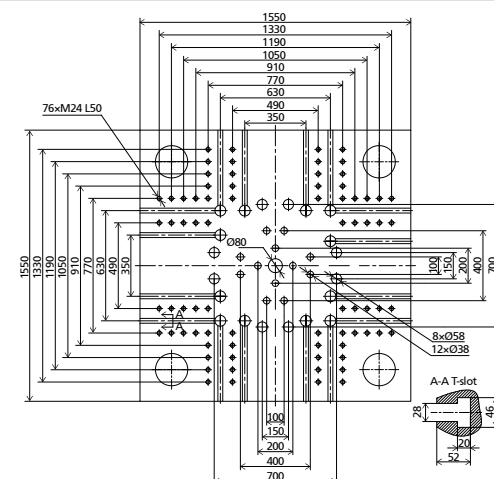
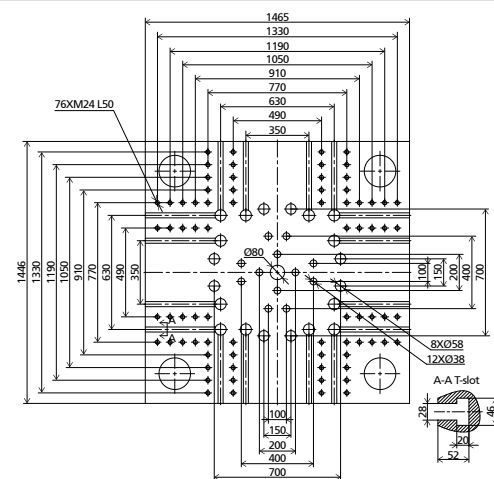
MACHINE TYPE		MA3900 V /2100h		MA4800 V /3200h		MA5500 V /4350h		MA6500 V /4700h	
CLAMPING UNIT	Clamping force	3900		4800		5500		6500	
	Mold opening stroke	700		780		850		930	
	Mold height min.	280		320		350		380	
	Mold height max.	730		780		850		980	
	Dist. between tie-bars (H×V)	755×755		830×830		850×850		880×880	
	Ejector stroke	180		200		220		240	
Ejector force	110		110		158		158		
INJECTION UNIT	Screw diameter	A 65	B 70	A 70	B 80	A 80	B 85	A 80	B 90
	Screw L/D ratio	21.5	20	22.9	20	23.4	22	24.8	22
	Injection volume (theoretical)	1062		1232		2212		2497	
	Injection weight (PS)	966		1121		2013		2058	
	Injection rate (PS)	604		700		800		800	
	Injection speed (max)	200		200		175		175	
	Injection pressure	198		170		197		174	
	Plasticizing rate (GPPS)	78		91		92		97	
	Screw speed	0-280		0-250		0-230		0-220	
OTHERS	Pump motor power	74		74+30		74+30		74+35	
	Heater power	39.3		50.3		60.8		67.1	
	Machine dimension (L×W×H)	7.6×2.0×2.7		8.3×2.1×2.7		9.5×2.2×2.8		10.2×2.2×3.0	
	Machine weight	16.3		22.2		27.5		32.6	
	Hopper capacity	50		50		50		100	
	Oil tank	580		780		780		920	



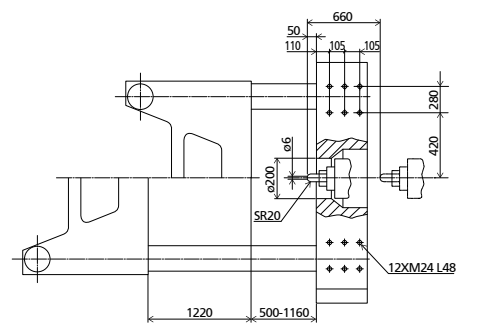
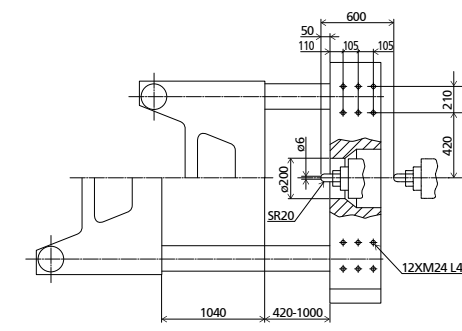
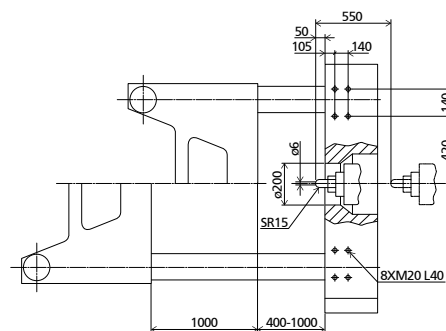
SPECIFICATION

MACHINE TYPE		MA7500 V /5100h		MA8000 V /6300h		MA10000 V /8100h	
CLAMPING UNIT	Clamping force	7500		8000		10000	
	Mold opening stroke	1000		1040		1220	
	Mold height min.	400		420		500	
	Mold height max.	1000		1000		1160	
	Dist. between tie-bars (H×V)	960×940		1000×1000		1160×1160	
	Ejector stroke	260		280		320	
Ejector force	186		186		215		
INJECTION UNIT	Screw diameter	A 90	B 100	A 90	B 100	A 100	B 110
	Screw L/D ratio	22	24	24.4	22	24.2	22
	Injection volume (theoretical)	2863	3534	2990	3691	4006	4847
	Injection weight (PS)	2605	3216	2721	3359	3645	4410
	Injection rate (PS)	1113	1149	1042	1286	1179	1427
	Injection speed (max)	192	161	180		165	
	Injection pressure	177	171	211	171	202	167
	Plasticizing rate (GPPS)	122	151	118	146	127	153
	Screw speed	0-220	0-200	0-200		0-170	
OTHERS	Pump motor power	74+52		74+67		74+74	
	Heater power	67.1	81	86.05		103.25	
	Machine dimension (L×W×H)	11.2×2.3×3.0		11.3×2.4×3.0		12.3×2.6×3.2	
	Machine weight	36.3		41.2		51.8	
	Hopper capacity	100		100		100	
	Oil tank	920		1030		1090	

PLATEN DIMENSIONS
Moving platen



PLATEN DIMENSIONS
Mounting hole for robot/sprue picker
top view from fixed platen



MACHINE DIMENSIONS

① Plasticizing capacity (GPPS): GB standard, with application of GPPS plasticizing capacity of 3-zone screws

