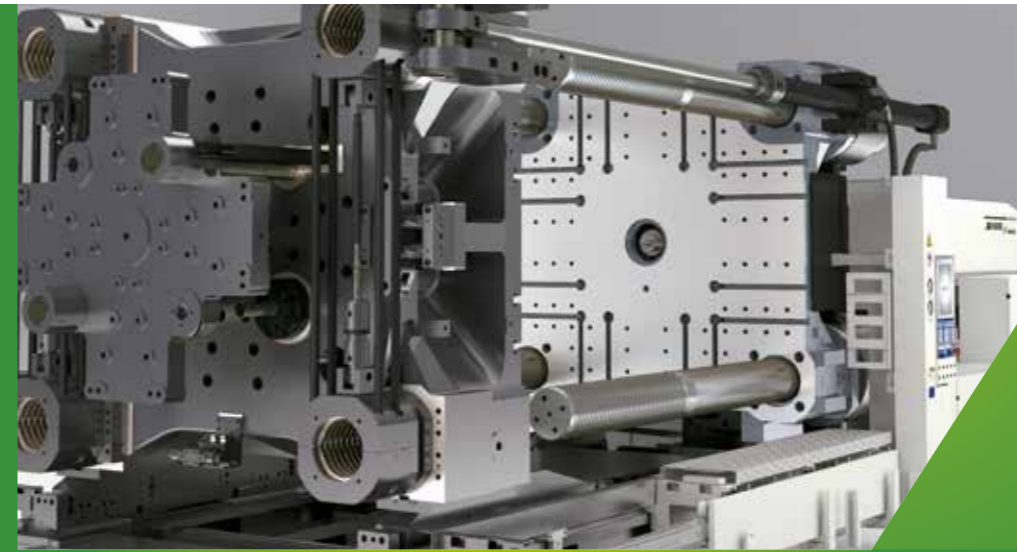


**HAITIAN PLASTICS MACHINERY GROUP CO., LTD**  
No. 1688 Haitian Road, Xiaogang, Beilun, Ningbo, P. R. China.  
+ 86-574-8617 7005 (China)  
+ 86-574-8617 7242 (International)  
haitian@mail.haitian.com  
www.haitianpm.com

**NINGBO HAITIAN HUAYUAN MACHINERY CO.,LTD.**  
No.1, Nanhuan Road, Export Processing Zone, Beilun, Ningbo, Zhejiang, 315806 P.R. China  
+86-574-8617 7242  
+86-574-8622 1864  
haitian@mail.haitian.com  
www.haitianpm.com



SE



**HAITIAN JU/SE SERIES**  
Servo hydraulic two-platen solution / Europe  
12,000 - 40,000 kN



HT 20230207-EU



## Combination Possibilities

12,000 - 40,000 kN

CLAMPING UNIT INJECTION UNIT	INJECTION UNIT														
	MACHINE TYPE	2400	3100	4300	5050	6500	8550	11200	16600	20200	28900	41000	52000	61000	94000
JU4500/SE															
JU5500/SE															
JU6500/SE															
JU7500/SE															
JU9000/SE															
JU10800/SE															
JU12000/SE															
JU13000/SE															
JU14000/SE															
JU16000/SE															
JU18500/SE															
JU21000/SE															
JU24000/SE															
JU28000/SE															
JU33000/SE															
JU40000/SE															

Standard range  
 Combination possibilities

## SPECIFICATION JU12000/SE

SPECIFICATIONS  
INJECTION UNIT

		6500				JU12000/SE 8550				11200					
<b>CLAMPING UNIT</b>														<b>CLAMPING UNIT</b>	
Clamping force	kN													kN	Clamping force
Dist. between tie bars (HxV)	mm													mm	Dist. between tie bars (HxV)
Mold height max.	mm													mm	Mold height max.
Mold height min.	mm													mm	Mold height min.
Ejector stroke	mm													mm	Ejector stroke
Ejector force	kN													kN	Ejector force
Max. daylight	mm													mm	Max. daylight
Mold opening stroke ①	mm													mm	Mold opening stroke ①
Max. mold weight ②	t													t	Max. mold weight ②
<b>INJECTION UNIT</b>		A	B	C	D	A	B	C	D	A	B	C	D	<b>INJECTION UNIT</b>	
Screw diameter	mm	90	100	110	120	100	110	120	130	110	120	130	140	mm	Screw diameter
Screw L /D ratio	L/D	24.4	22	20	18.3	24.2	22	20.2	18.6	26.2	24	22.2	20.6	L/D	Screw L /D ratio
Injection volume (theoretical)	cm <sup>3</sup>	2990	3691	4467	5316	4006	4847	5768	6769	5227	6220	7300	8467	cm <sup>3</sup>	Injection volume (theoretical)
Injection weight (PS)	g	2721	3359	4065	4837	3645	4410	5249	6160	4756	5661	6643	7705	g	Injection weight (PS)
Injection rate	g/s	569	703	850	1012	713	863	1027	1205	784	933	1095	1269	g/s	Injection rate
Injection pressure	MPa	218	176	146	122	213	176	148	126	214	180	153	132	MPa	Injection pressure
Plasticizing rate (GPPS) ③	g/s	89.5	110	130	152	101	121	140	161	123	142	164	187	g/s	Plasticizing rate (GPPS) ③
Plasticizing rate (HDPE) ④	g/s	132	162	193	224	147	177	201	231	187	217	240	273	g/s	Plasticizing rate (HDPE) ④
Screw speed	rpm	135				116				105				rpm	Screw speed
<b>OTHERS</b>														<b>OTHERS</b>	
Pump motor power	kW	85				112				130				kW	Pump motor power
Heating power	kW	71				83				104				kW	Heating power
Machine dimension (L x W x H) ⑤	m	9.80x3.36x3.15				10.07x3.36x3.16				10.92x3.36x3.77				m	Machine dimension (L x W x H) ⑤
Machine weight	t	46				47				51				t	Machine weight
Hopper capacity	kg	100				100				200				kg	Hopper capacity
Oil tank ⑥	l	830				910				1250				l	Oil tank ⑥

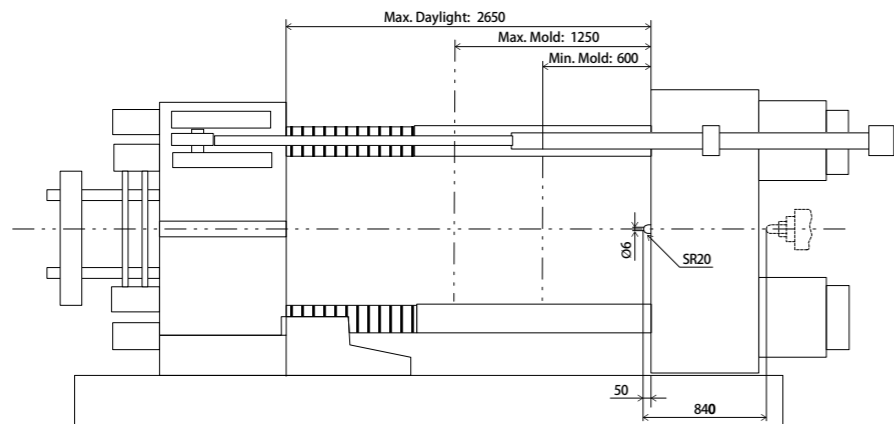
NOTE:

- ① with min. mold height / with max. mold height.
- ② moving platen: 2/3 of max. mold weight.
- ③ Plasticizing capacity (GPPS): GB standard, with application of GPPS plasticizing capacity of 3-zone screws.
- ④ Plasticizing capacity (HDPE): Euromap 19, with application of HDPE plasticizing capacity of barrier screws  
The above plasticizing capacity is for reference only.
- ⑤ This refers to the machine's net size, not including the width of the operation platform and ladder.
- ⑥ The oil tank volume refers to the volume of the oil tank itself, excluding the volume in cylinder and pipeline. In this sense, the customer is advised to prepare the hydraulic oil according to 1.35 times of the oil tank volume.

We reserve the right to make changes as a result of further technical advantages.

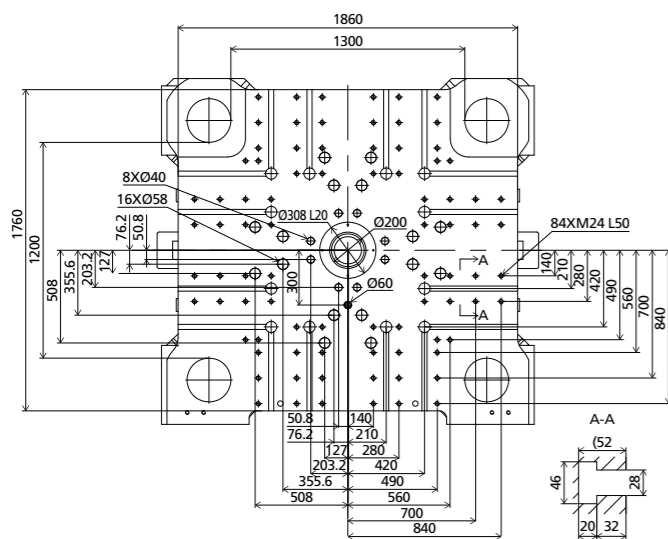
# DIMENSIONS JU12000/SE

## Clamping Unit



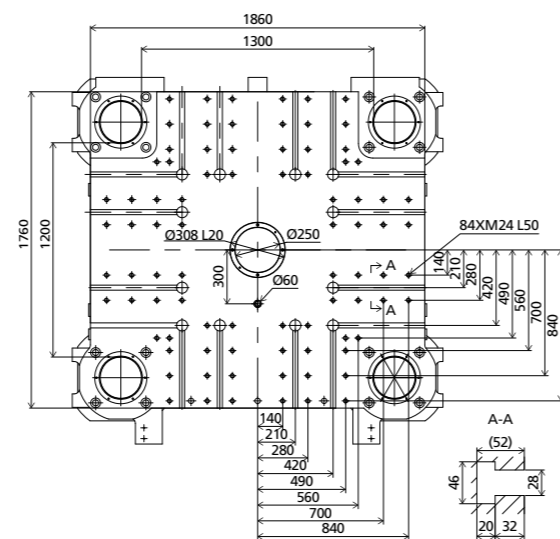
## Platen dimensions

Moving platen



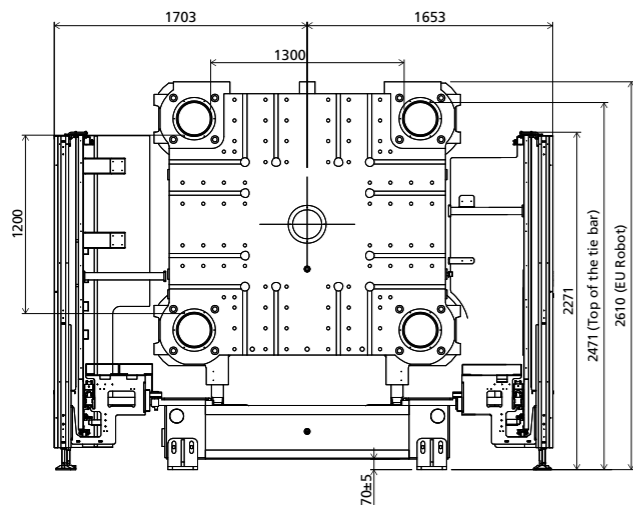
## Platen dimensions

Fixed platen



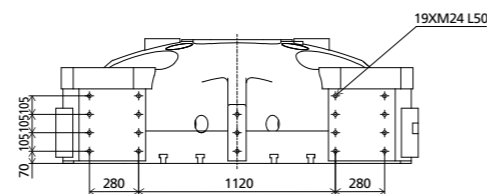
## Robot

Mechanical interface

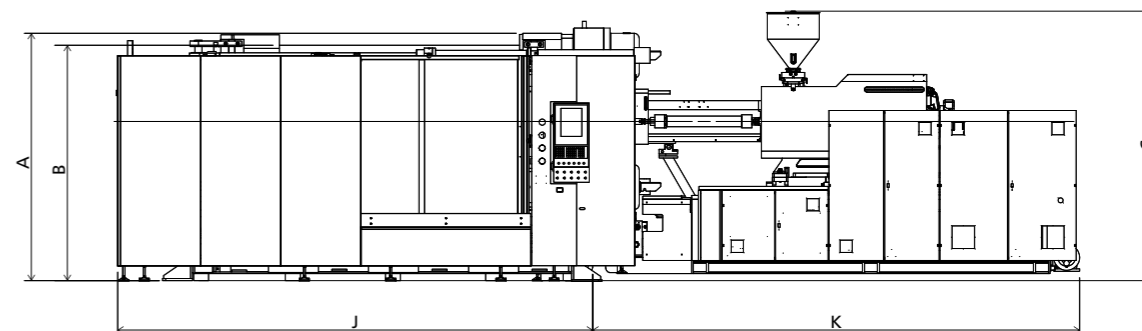


## Robot

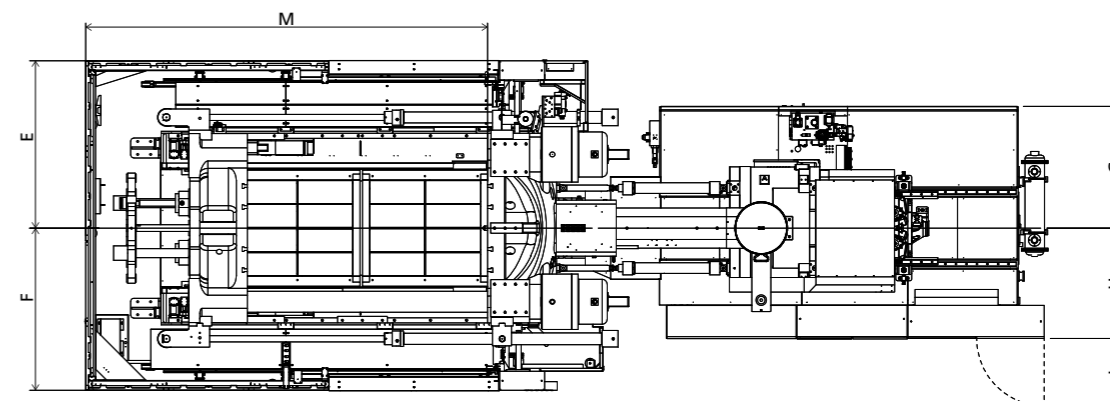
Top view fixed platen



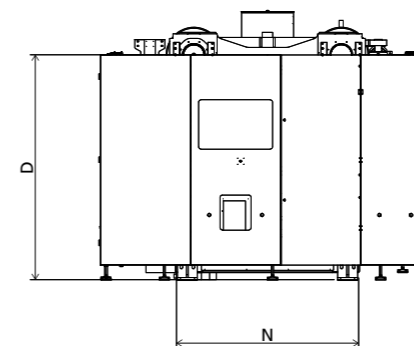
## Front view



## Top view



## Side view



■ Standard

	A	B	C	D	E	F	G	H	I	J	K	M	N
6500	2610	2471	3145	2248	1703	1653	1213	1043	674	5102	4696	4307	1896
8550	2610	2471	3155	2248	1703	1653	1213	1103	674	5102	4910	4307	1896
11200	2610	2471	3763	2248	1703	1653	1314	1282	744	5102	5810	4307	1896

INJECTION UNIT  
DIMENSIONS (mm)

We reserve the right to make changes as a result of further technical advantages.

## SPECIFICATION JU13000/SE

SPECIFICATIONS  
INJECTION UNIT

		8550				JU13000/SE 11200				16600				
<b>CLAMPING UNIT</b>													<b>CLAMPING UNIT</b>	
Clamping force	kN												kN	Clamping force
Dist. between tie bars (HxV)	mm												mm	Dist. between tie bars (HxV)
Mold height max.	mm												mm	Mold height max.
Mold height min.	mm												mm	Mold height min.
Ejector stroke	mm												mm	Ejector stroke
Ejector force	kN												kN	Ejector force
Max. daylight	mm												mm	Max. daylight
Mold opening stroke ①	mm												mm	Mold opening stroke ①
Max. mold weight ②	t												t	Max. mold weight ②
<b>INJECTION UNIT</b>		A	B	C	D	A	B	C	D	A	B	C	<b>INJECTION UNIT</b>	
Screw diameter	mm	100	110	120	130	110	120	130	140	130	140	150	mm	Screw diameter
Screw L /D ratio	L/D	24.2	22	20.2	18.6	26.2	24	22.2	20.6	24	22.3	20.8	L/D	Screw L /D ratio
Injection volume (theoretical)	cm <sup>3</sup>	4006	4847	5768	6769	5227	6220	7300	8467	8362	9698	11133	cm <sup>3</sup>	Injection volume (theoretical)
Injection weight (PS)	g	3645	4410	5249	6160	4756	5661	6643	7705	7610	8825	10131	g	Injection weight (PS)
Injection rate	g/s	713	863	1027	1205	784	933	1095	1269	1184	1373	1576	g/s	Injection rate
Injection pressure	MPa	213	176	148	126	214	180	153	132	199	171	149	MPa	Injection pressure
Plasticizing rate (GPPS) ③	g/s	101	121	140	161	123	142	164	187	168	192	220	g/s	Plasticizing rate (GPPS) ③
Plasticizing rate (HDPE) ④	g/s	147	177	201	231	187	217	240	273	252	283	336	g/s	Plasticizing rate (HDPE) ④
Screw speed	rpm	116				105				102			rpm	Screw speed
<b>OTHERS</b>													<b>OTHERS</b>	
Pump motor power	kW												kW	Pump motor power
Heating power	kW												kW	Heating power
Machine dimension (L x W x H) ⑤	m	9.59x3.37x3.26				11.23x3.37x3.87				10.62x3.37x4.39			m	Machine dimension (L x W x H) ⑤
Machine weight	t												t	Machine weight
Hopper capacity	kg												kg	Hopper capacity
Oil tank ⑥	l												l	Oil tank ⑥

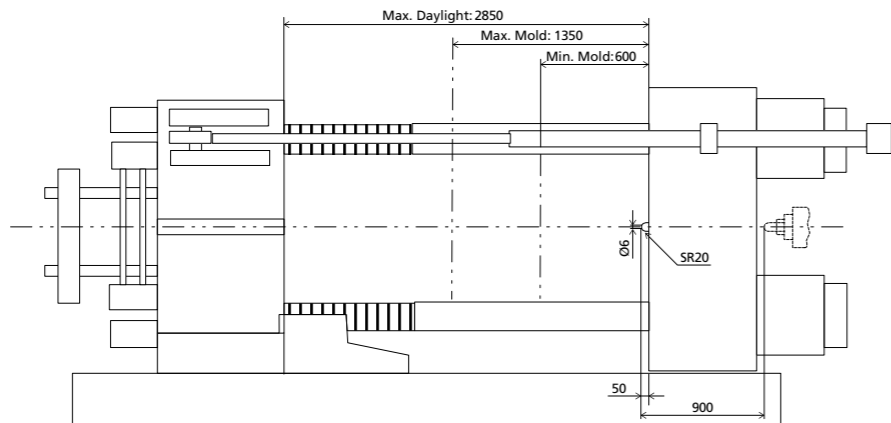
NOTE:

- ① with min. mold height / with max. mold height.
- ② moving platen: 2/3 of max. mold weight.
- ③ Plasticizing capacity (GPPS): GB standard, with application of GPPS plasticizing capacity of 3-zone screws.
- ④ Plasticizing capacity (HDPE): Euromap 19, with application of HDPE plasticizing capacity of barrier screws  
The above plasticizing capacity is for reference only.
- ⑤ This refers to the machine's net size, not including the width of the operation platform and ladder.
- ⑥ The oil tank volume refers to the volume of the oil tank itself, excluding the volume in cylinder and pipeline. In this sense, the customer is advised to prepare the hydraulic oil according to 1.35 times of the oil tank volume.

We reserve the right to make changes as a result of further technical advantages.

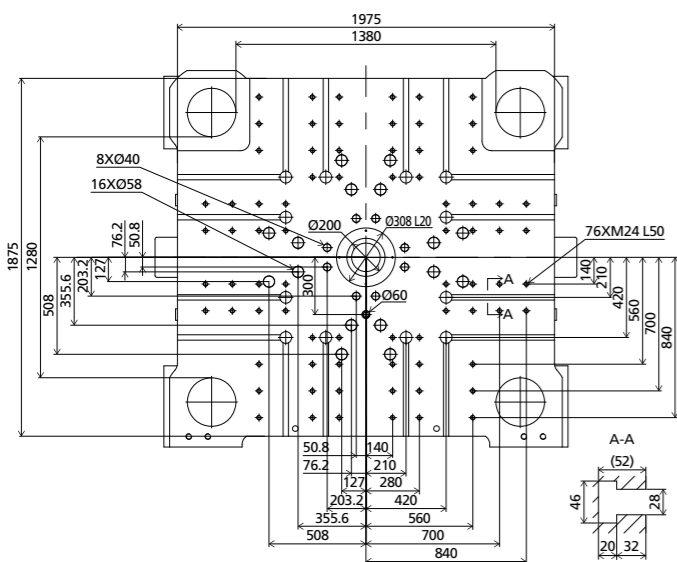
# DIMENSIONS JU13000/SE

## Clamping Unit



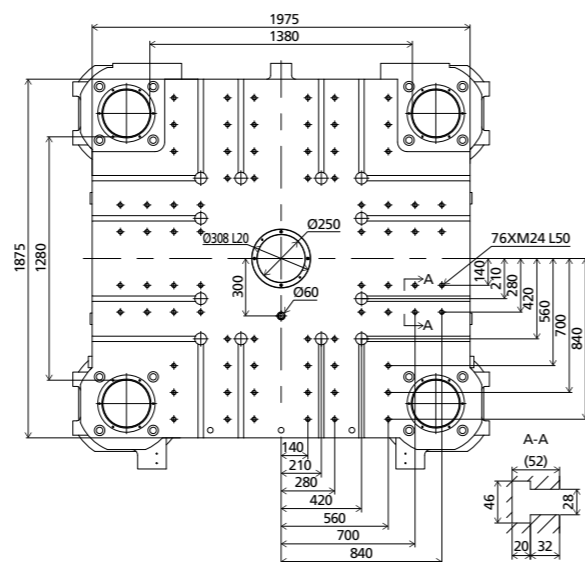
## Platen dimensions

Moving platen



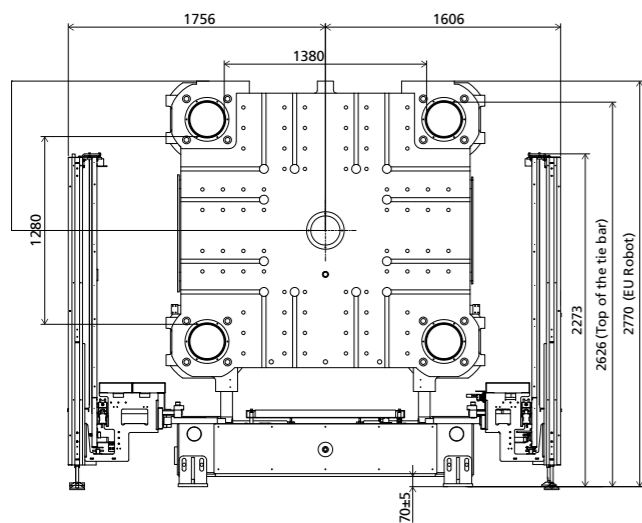
## Platen dimensions

Fixed platen



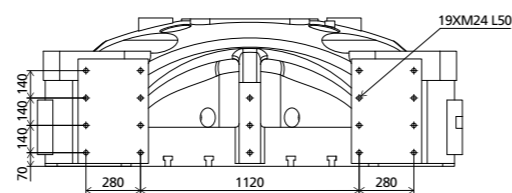
## Robot

Mechanical interface

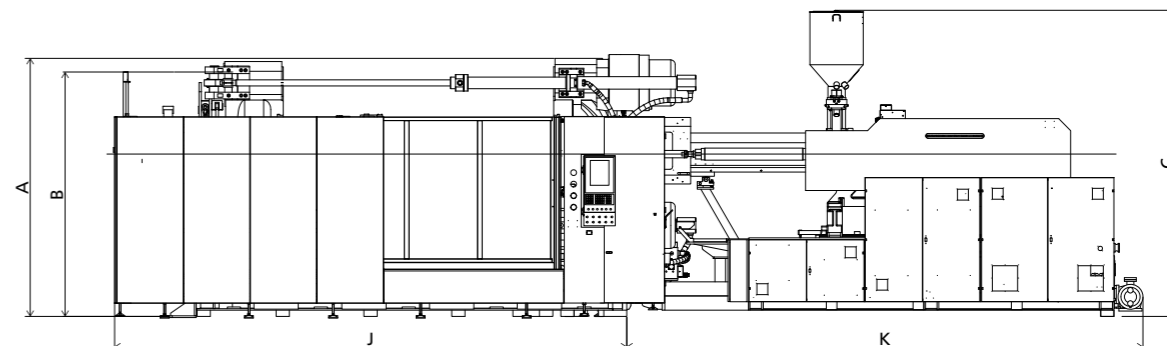


## Robot

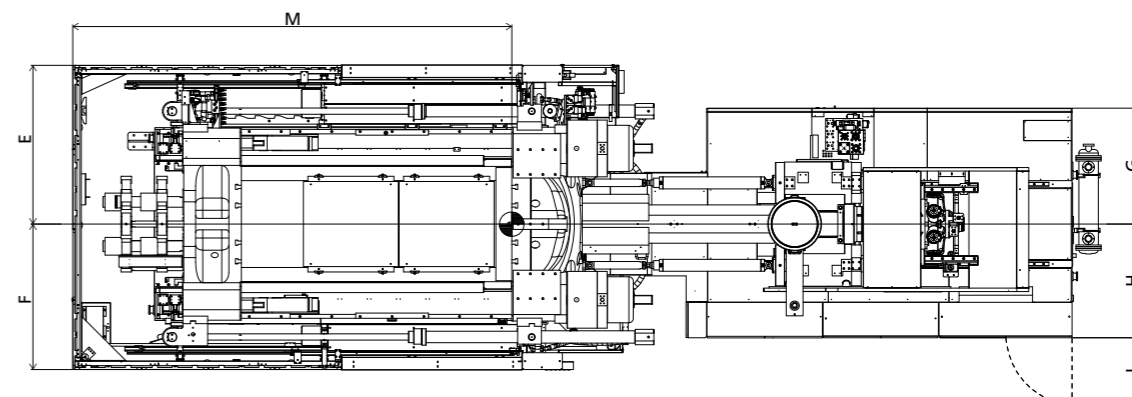
Top view fixed platen



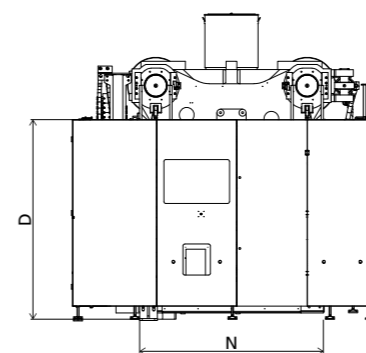
## Front view



## Top view



## Side view



■ Standard

	A	B	C	D	E	F	G	H	I	J	K	M	N
8550	2770	2626	3255	2250	1756	1606	1217	1103	544	4566	5021	4639	2002
11200	2770	2626	3863	2250	1756	1606	1303	1282	744	4566	5821	4639	2002
16600	2770	2626	4388	2250	1756	1606	1857	1305	870	4566	6045	4639	2002

INJECTION UNIT  
DIMENSIONS (mm)

We reserve the right to make changes as a result of further technical advantages.

## SPECIFICATION JU14000/SE

SPECIFICATIONS  
INJECTION UNIT

		8550				JU14000/SE 11200				16600				
<b>CLAMPING UNIT</b>													<b>CLAMPING UNIT</b>	
Clamping force	kN												kN	Clamping force
Dist. between tie bars (H×V)	mm												mm	Dist. between tie bars (H×V)
Mold height max.	mm												mm	Mold height max.
Mold height min.	mm												mm	Mold height min.
Ejector stroke	mm												mm	Ejector stroke
Ejector force	kN												kN	Ejector force
Max. daylight	mm												mm	Max. daylight
Mold opening stroke ①	mm												mm	Mold opening stroke ①
Max. mold weight ②	t												t	Max. mold weight ②
<b>INJECTION UNIT</b>		A	B	C	D	A	B	C	D	A	B	C	<b>INJECTION UNIT</b>	
Screw diameter	mm	100	110	120	130	110	120	130	140	130	140	150	mm	Screw diameter
Screw L /D ratio	L/D	24.2	22	20.2	18.6	26.2	24	22.2	20.6	24	22.3	20.8	L/D	Screw L /D ratio
Injection volume (theoretical)	cm <sup>3</sup>	4006	4847	5768	6769	5227	6220	7300	8467	8362	9698	11133	cm <sup>3</sup>	Injection volume (theoretical)
Injection weight (PS)	g	3645	4410	5249	6160	4756	5661	6643	7705	7610	8825	10131	g	Injection weight (PS)
Injection rate	g/s	713	863	1027	1205	784	933	1095	1269	1184	1373	1576	g/s	Injection rate
Injection pressure	MPa	213	176	148	126	214	180	153	132	199	171	149	MPa	Injection pressure
Plasticizing rate (GPPS) ③	g/s	101	121	140	161	123	142	164	187	168	192	220	g/s	Plasticizing rate (GPPS) ③
Plasticizing rate (HDPE) ④	g/s	147	177	201	231	187	217	240	273	252	283	336	g/s	Plasticizing rate (HDPE) ④
Screw speed	rpm	116				105				102			rpm	Screw speed
<b>OTHERS</b>													<b>OTHERS</b>	
Pump motor power	kW												kW	Pump motor power
Heating power	kW												kW	Heating power
Machine dimension (L x W x H) ⑤	m	10.80×3.44×3.34				11.60×3.44×3.95				11.84×3.50×4.47			m	Machine dimension (L x W x H) ⑤
Machine weight	t												t	Machine weight
Hopper capacity	kg												kg	Hopper capacity
Oil tank ⑥	l												l	Oil tank ⑥

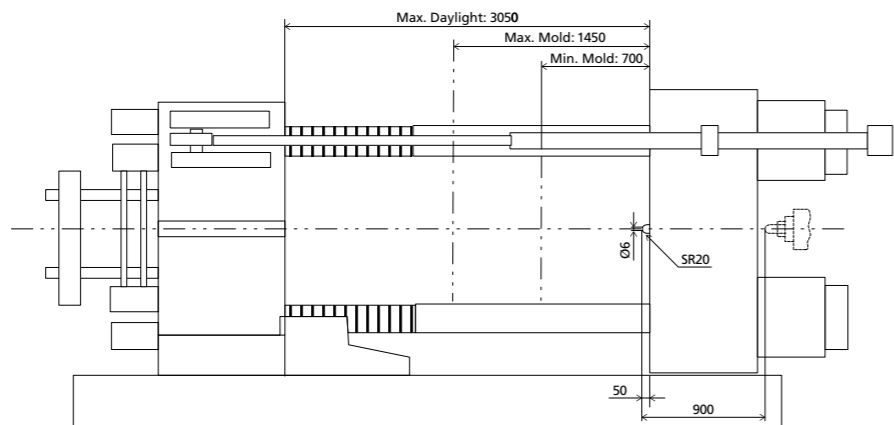
NOTE:

- ① with min. mold height / with max. mold height.
- ② moving platen: 2/3 of max. mold weight.
- ③ Plasticizing capacity (GPPS): GB standard, with application of GPPS plasticizing capacity of 3-zone screws.
- ④ Plasticizing capacity (HDPE): Euromap 19, with application of HDPE plasticizing capacity of barrier screws  
The above plasticizing capacity is for reference only.
- ⑤ This refers to the machine's net size, not including the width of the operation platform and ladder.
- ⑥ The oil tank volume refers to the volume of the oil tank itself, excluding the volume in cylinder and pipeline. In this sense, the customer is advised to prepare the hydraulic oil according to 1.35 times of the oil tank volume.

We reserve the right to make changes as a result of further technical advantages.

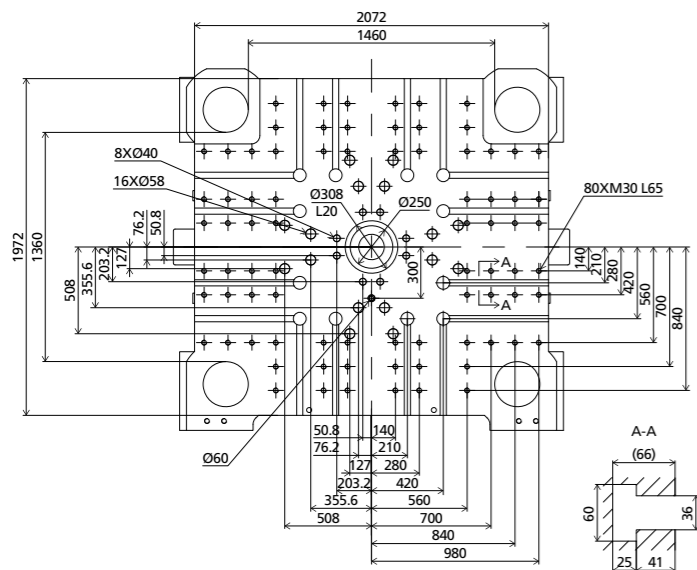
# DIMENSIONS JU14000/SE

## Clamping Unit



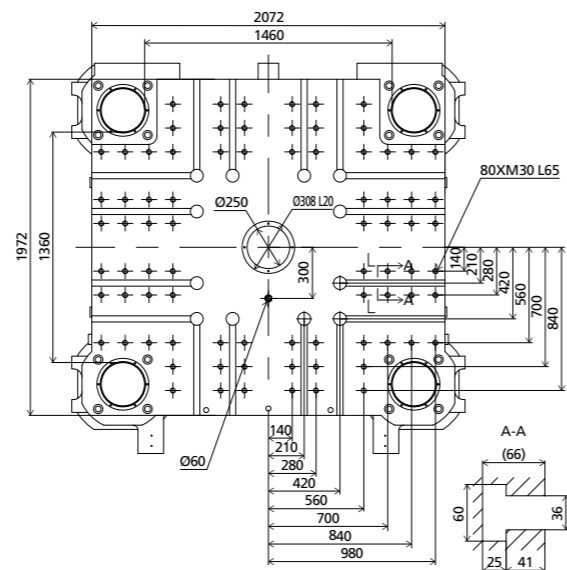
## Platen dimensions

Moving platen



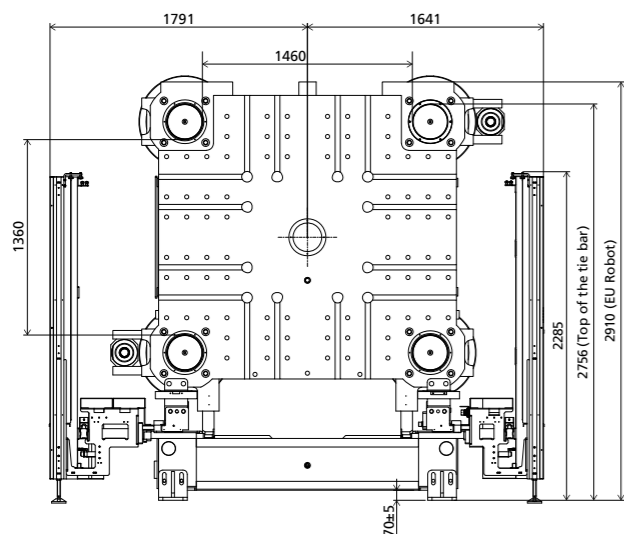
## Platen dimensions

Fixed platen



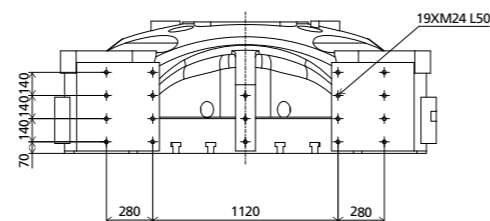
## Robot

Mechanical interface

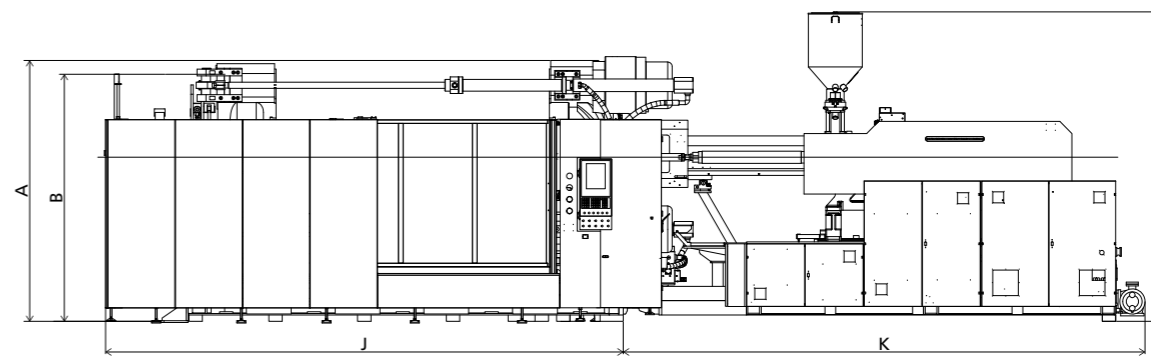


## Robot

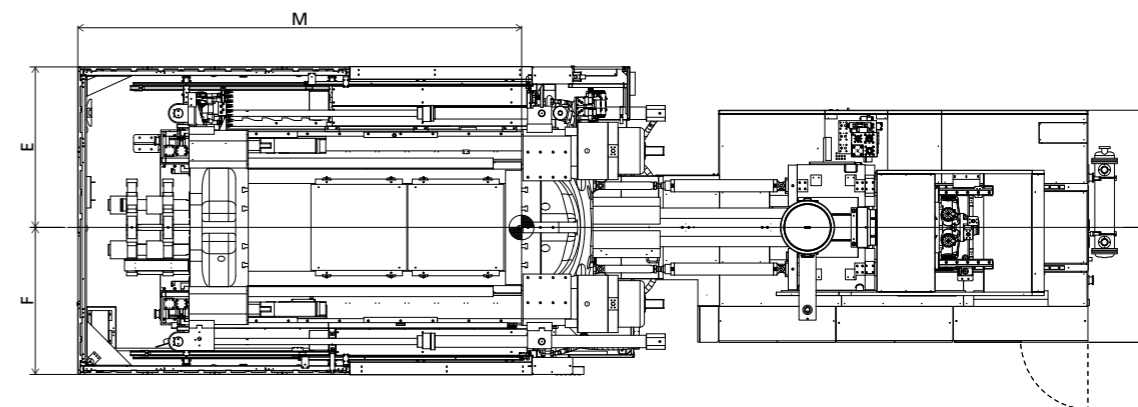
Top view fixed platen



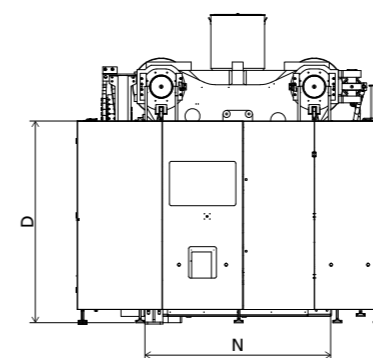
## Front view



## Top view



## Side view



Standard

	A	B	C	D	E	F	G	H	I	J	K	M	N
8550	2910	2756	3335	2250	1791	1641	1213	1103	544	5776	5021	4951	2072
11200	2910	2756	3943	2250	1791	1641	1303	1282	744	5776	5821	4951	2072
16600	2910	2756	4468	2250	1791	1641	1855	1305	870	5776	6060	4951	2072

INJECTION UNIT  
DIMENSIONS (mm)

We reserve the right to make changes as a result of further technical advantages.



## SPECIFICATION JU16000/SE

SPECIFICATIONS  
INJECTION UNIT

		11200				JU16000/SE 16600			20200						
<b>CLAMPING UNIT</b>														<b>CLAMPING UNIT</b>	
Clamping force	kN													kN	Clamping force
Dist. between tie bars (H×V)	mm													mm	Dist. between tie bars (H×V)
Mold height max.	mm													mm	Mold height max.
Mold height min.	mm													mm	Mold height min.
Ejector stroke	mm													mm	Ejector stroke
Ejector force	kN													kN	Ejector force
Max. daylight	mm													mm	Max. daylight
Mold opening stroke ①	mm													mm	Mold opening stroke ①
Max. mold weight ②	t													t	Max. mold weight ②
<b>INJECTION UNIT</b>		A	B	C	D	A	B	C	A	B	C	D	<b>INJECTION UNIT</b>		
Screw diameter	mm	110	120	130	140	130	140	150	140	150	160	170	mm	Screw diameter	
Screw L /D ratio	L/D	26.2	24	22.2	20.6	24	22.3	20.8	24	22.4	21	19.8	L/D	Screw L /D ratio	
Injection volume (theoretical)	cm <sup>3</sup>	5227	6220	7300	8467	8362	9698	11133	10468	12017	13672	15435	cm <sup>3</sup>	Injection volume (theoretical)	
Injection weight (PS)	g	4756	5661	6643	7705	7610	8825	10131	9526	10935	12442	14046	g	Injection weight (PS)	
Injection rate	g/s	784	933	1095	1269	1184	1373	1576	1302	1495	1701	1920	g/s	Injection rate	
Injection pressure	MPa	214	180	153	132	199	171	149	193	168	148	131	MPa	Injection pressure	
Plasticizing rate (GPPS) ③	g/s	123	142	164	187	168	192	220	155	176	196	222	g/s	Plasticizing rate (GPPS) ③	
Plasticizing rate (HDPE) ④	g/s	187	217	240	273	252	283	336	243	294	303	334	g/s	Plasticizing rate (HDPE) ④	
Screw speed	rpm	105				102			85				rpm	Screw speed	
<b>OTHERS</b>														<b>OTHERS</b>	
Pump motor power	kW	130				167			185				kW	Pump motor power	
Heating power	kW	104				116			133				kW	Heating power	
Machine dimension (L x W x H) ⑤	m	11.80×3.64×3.99				12.38×3.64×4.51			12.43×3.64×4.51				m	Machine dimension (L x W x H) ⑤	
Machine weight	t	69				74			79				t	Machine weight	
Hopper capacity	kg	200				200			200				kg	Hopper capacity	
Oil tank ⑥	l	1250				1550			1750				l	Oil tank ⑥	

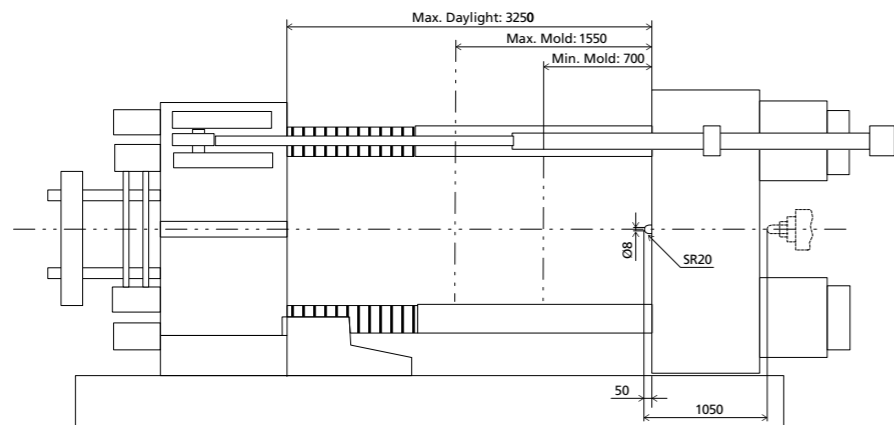
NOTE:

- ① with min. mold height / with max. mold height.
- ② moving platen: 2/3 of max. mold weight.
- ③ Plasticizing capacity (GPPS): GB standard, with application of GPPS plasticizing capacity of 3-zone screws.
- ④ Plasticizing capacity (HDPE): Euromap 19, with application of HDPE plasticizing capacity of barrier screws  
The above plasticizing capacity is for reference only.
- ⑤ This refers to the machine's net size, not including the width of the operation platform and ladder.
- ⑥ The oil tank volume refers to the volume of the oil tank itself, excluding the volume in cylinder and pipeline. In this sense, the customer is advised to prepare the hydraulic oil according to 1.35 times of the oil tank volume.

We reserve the right to make changes as a result of further technical advantages.

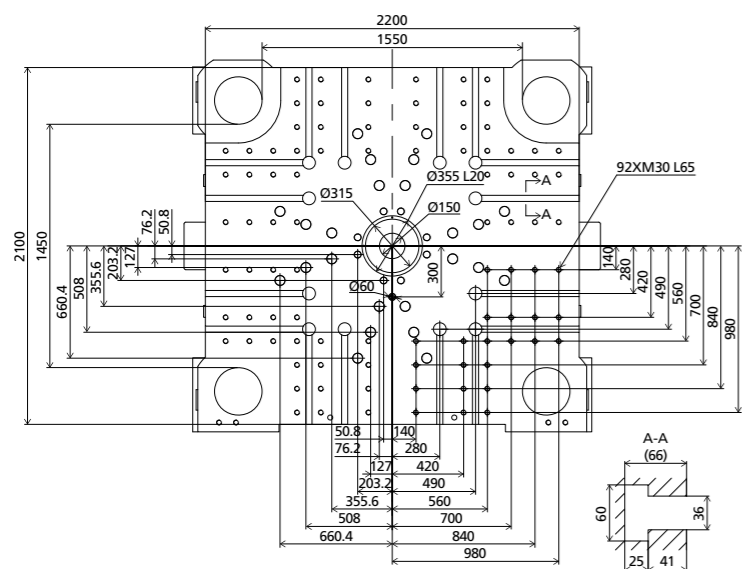
# DIMENSIONS JU16000/SE

## Clamping Unit



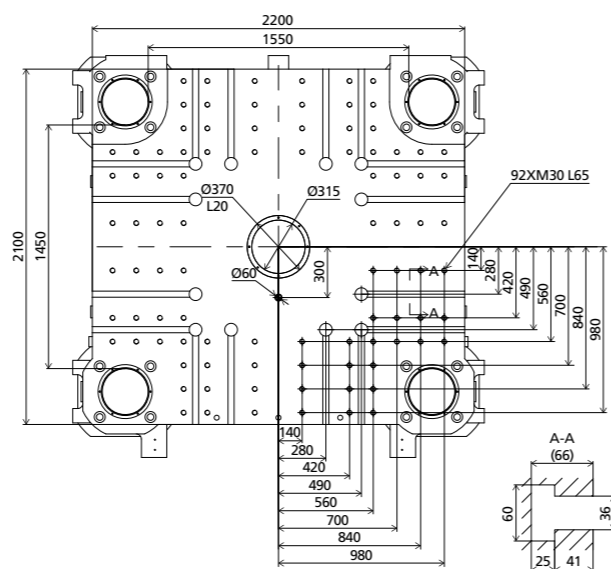
## Platen dimensions

Moving platen



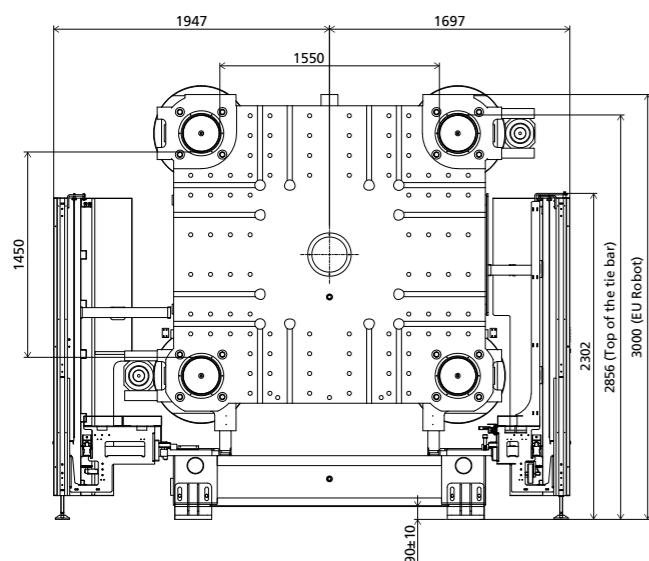
## Platen dimensions

Fixed platen



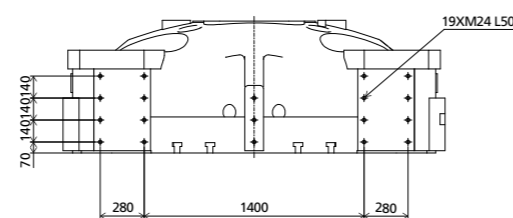
## Robot

Mechanical interface

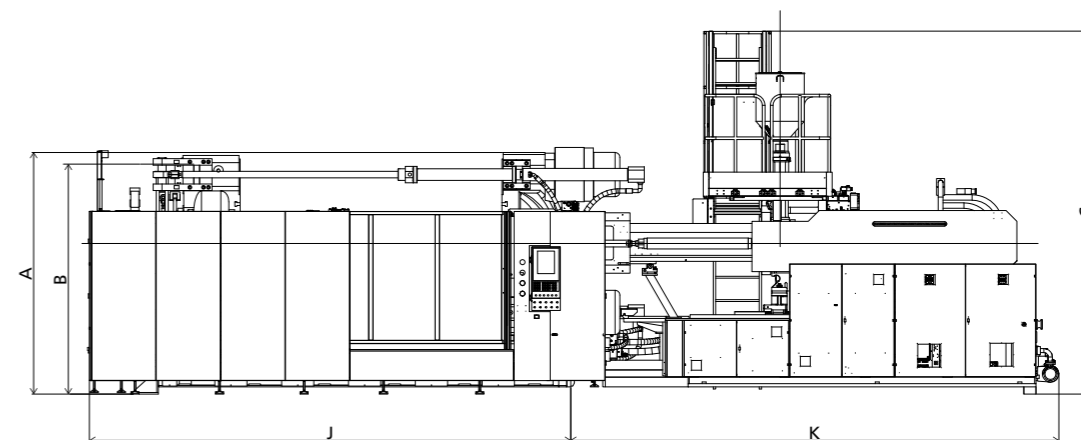


## Robot

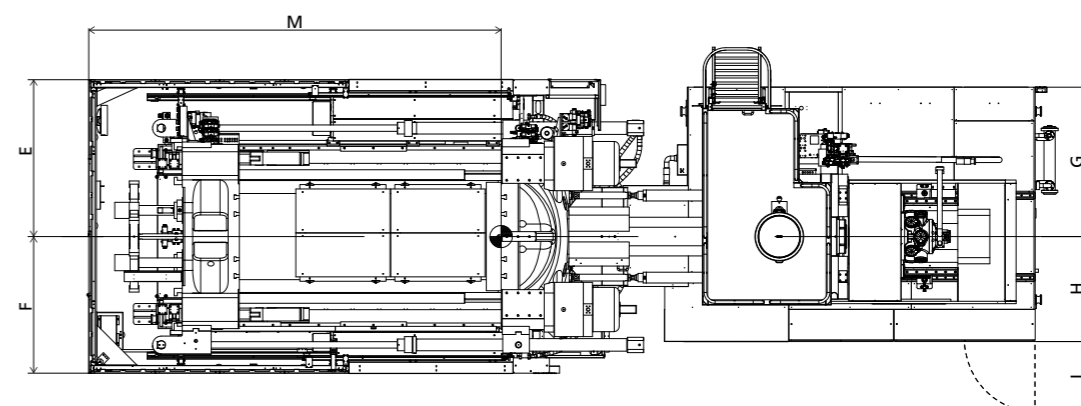
Top view fixed platen



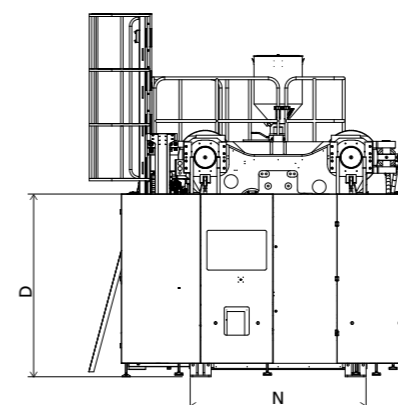
## Front view



## Top view



## Side view



■ Standard

	A	B	C	D	E	F	G	H	I	J	K	M	N
11200	3000	2856	3983	2270	1947	1697	1303	1282	744	5976	5821	5121	2184
16600	3000	2856	4508	2270	1947	1697	1855	1305	870	5976	6060	5121	2184
20200	3000	2856	4508	2270	1947	1697	1935	1435	870	5976	6452	5121	2184

INJECTION UNIT  
DIMENSIONS (mm)

We reserve the right to make changes as a result of further technical advantages.

## SPECIFICATION JU18500/SE

SPECIFICATIONS  
INJECTION UNIT

		11200				16600				20200					
<b>CLAMPING UNIT</b>														<b>CLAMPING UNIT</b>	
Clamping force	kN					18500								kN	Clamping force
Dist. between tie bars (HxV)	mm					1650x1550								mm	Dist. between tie bars (HxV)
Mold height max.	mm					1600								mm	Mold height max.
Mold height min.	mm					750								mm	Mold height min.
Ejector stroke	mm					450								mm	Ejector stroke
Ejector force	kN					450								kN	Ejector force
Max. daylight	mm					3350								mm	Max. daylight
Mold opening stroke ①	mm					2600/1750								mm	Mold opening stroke ①
Max. mold weight ②	t					40								t	Max. mold weight ②
<b>INJECTION UNIT</b>		A	B	C	D	A	B	C	A	B	C	D	<b>INJECTION UNIT</b>		
Screw diameter	mm	110	120	130	140	130	140	150	140	150	160	170	mm	Screw diameter	
Screw L /D ratio	L/D	26.2	24	22.2	20.6	24	22.3	20.8	24	22.4	21	19.8	L/D	Screw L /D ratio	
Injection volume (theoretical)	cm <sup>3</sup>	5227	6220	7300	8467	8362	9698	11133	10468	12017	13672	15435	cm <sup>3</sup>	Injection volume (theoretical)	
Injection weight (PS)	g	4756	5661	6643	7705	7610	8825	10131	9526	10935	12442	14046	g	Injection weight (PS)	
Injection rate	g/s	784	933	1095	1269	1184	1373	1576	1302	1495	1701	1920	g/s	Injection rate	
Injection pressure	MPa	214	180	153	132	199	171	149	193	168	148	131	MPa	Injection pressure	
Plasticizing rate (GPPS) ③	g/s	123	142	164	187	168	192	220	155	176	196	222	g/s	Plasticizing rate (GPPS) ③	
Plasticizing rate (HDPE) ④	g/s	187	217	240	273	252	283	336	243	294	303	334	g/s	Plasticizing rate (HDPE) ④	
Screw speed	rpm	105				102				85				rpm	Screw speed
<b>OTHERS</b>														<b>OTHERS</b>	
Pump motor power	kW	130				167				185				kW	Pump motor power
Heating power	kW	104				116				133				kW	Heating power
Machine dimension (L x W x H) ⑤	m	12.13x3.85x4.12				12.58x3.85x4.52				12.76x3.85x4.52				m	Machine dimension (L x W x H) ⑤
Machine weight	t	81				86				91				t	Machine weight
Hopper capacity	kg	200				200				200				kg	Hopper capacity
Oil tank ⑥	l	1250				1550				1750				l	Oil tank ⑥

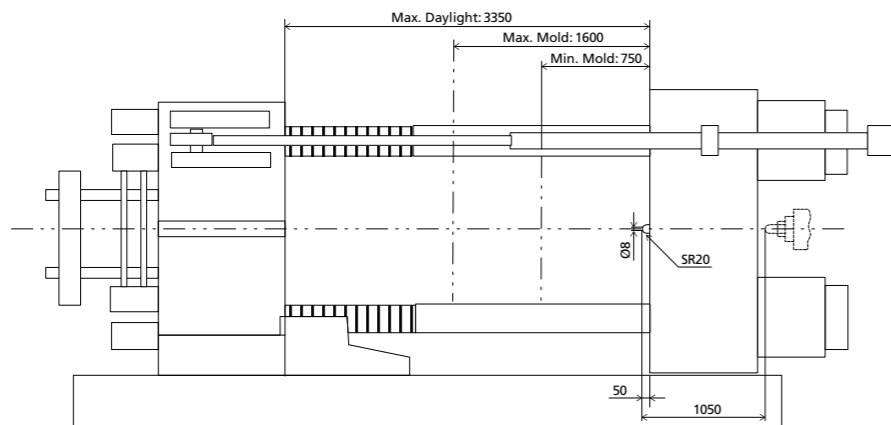
NOTE:

- ① with min. mold height / with max. mold height.
- ② moving platen: 2/3 of max. mold weight.
- ③ Plasticizing capacity (GPPS): GB standard, with application of GPPS plasticizing capacity of 3-zone screws.
- ④ Plasticizing capacity (HDPE): Euromap 19, with application of HDPE plasticizing capacity of barrier screws  
The above plasticizing capacity is for reference only.
- ⑤ This refers to the machine's net size, not including the width of the operation platform and ladder.
- ⑥ The oil tank volume refers to the volume of the oil tank itself, excluding the volume in cylinder and pipeline. In this sense, the customer is advised to prepare the hydraulic oil according to 1.35 times of the oil tank volume.

We reserve the right to make changes as a result of further technical advantages.

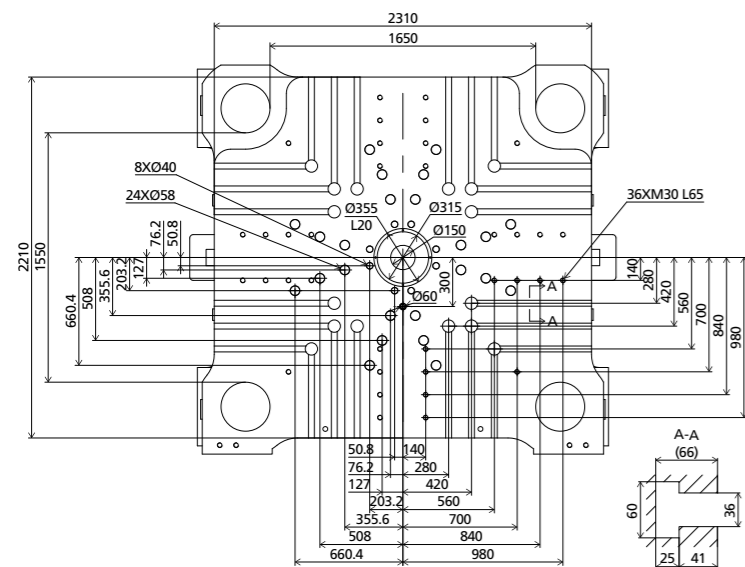
# DIMENSIONS JU18500/SE

## Clamping Unit



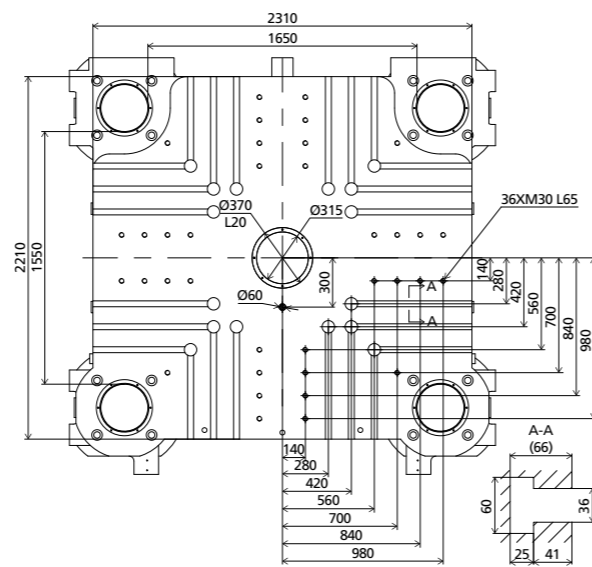
## Platen dimensions

Moving platen



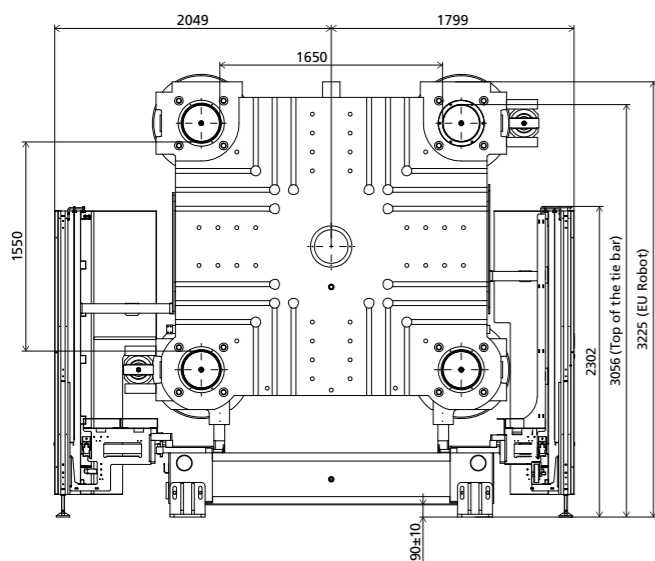
## Platen dimensions

Fixed platen



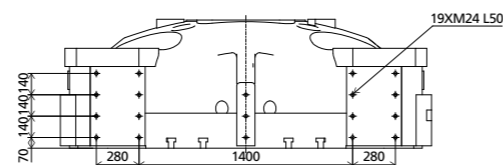
## Robot

Mechanical interface

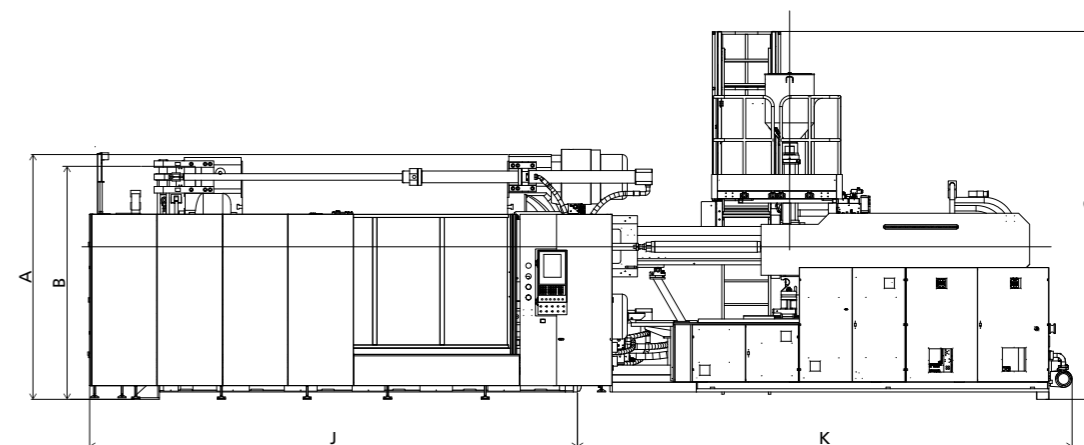


## Robot

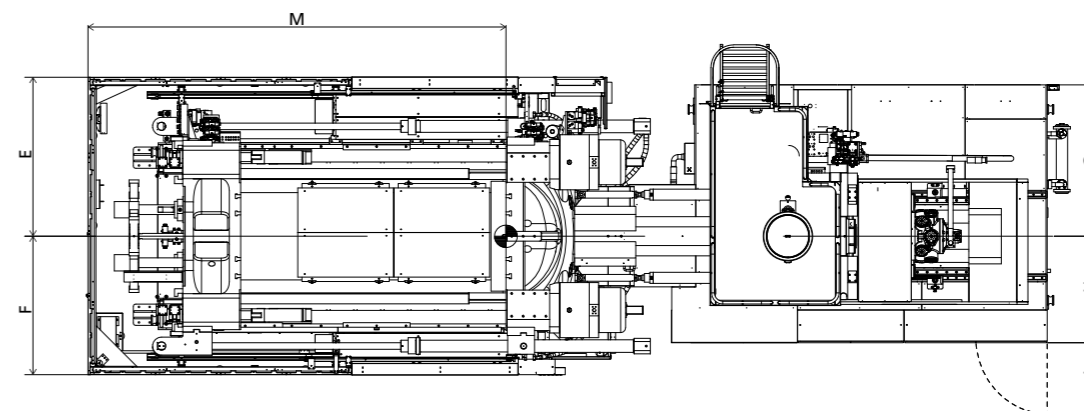
Top view fixed platen



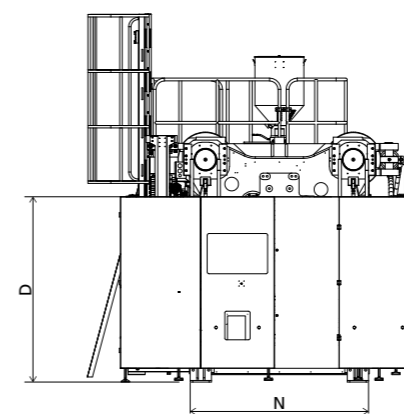
## Front view



## Top view



## Side view



■ Standard

	A	B	C	D	E	F	G	H	I	J	K	M	N
11200	3225	3056	4118	2070	2049	1799	1303	1282	744	6306	5821	5321	2388
16600	3225	3056	4513	2070	2049	1799	1855	1305	870	6306	5980	5321	2388
20200	3225	3056	4513	2070	2049	1799	1935	1435	870	6306	6452	5321	2388

INJECTION UNIT  
DIMENSIONS (mm)

We reserve the right to make changes as a result of further technical advantages.

## SPECIFICATION JU21000/SE

SPECIFICATIONS  
INJECTION UNIT

		JU21000/SE													
		16600			20200				28900		41000				
<b>CLAMPING UNIT</b>		<b>CLAMPING UNIT</b>													
Clamping force	kN	21000										kN	Clamping force		
Dist. between tie bars (HxV)	mm	1800x1600										mm	Dist. between tie bars (HxV)		
Mold height max.	mm	1700										mm	Mold height max.		
Mold height min.	mm	800										mm	Mold height min.		
Ejector stroke	mm	450										mm	Ejector stroke		
Ejector force	kN	450										kN	Ejector force		
Max. daylight	mm	3500										mm	Max. daylight		
Mold opening stroke ①	mm	2700/1800										mm	Mold opening stroke ①		
Max. mold weight ②	t	50										t	Max. mold weight ②		
<b>INJECTION UNIT</b>		<b>INJECTION UNIT</b>													
Screw diameter	mm	A	B	C	A	B	C	D	A	B	A	B	mm	Screw diameter	
Screw L /D ratio	L/D	24	22.3	20.8	24	22.4	21	19.8	24	22.6	23.5	21.6	L/D	Screw L /D ratio	
Injection volume (theoretical)	cm <sup>3</sup>	8362	9698	11133	10468	12017	13672	15435	17492	19747	23379	27687	cm <sup>3</sup>	Injection volume (theoretical)	
Injection weight (PS)	g	7610	8825	10131	9526	10935	12442	14046	15918	17970	21275	25195	g	Injection weight (PS)	
Injection rate	g/s	1184	1373	1576	1302	1495	1701	1920	1520	1716	1441	1707	g/s	Injection rate	
Injection pressure	MPa	199	171	149	193	168	148	131	165	147	174	147	MPa	Injection pressure	
Plasticizing rate (GPPS) ③	g/s	168	192	220	155	176	196	222	--	--	--	--	g/s	Plasticizing rate (GPPS) ③	
Plasticizing rate (HDPE) ④	g/s	252	283	336	243	294	303	334	280	310	309	320	g/s	Plasticizing rate (HDPE) ④	
Screw speed	rpm	102			85				72		70			rpm	Screw speed
<b>OTHERS</b>		<b>OTHERS</b>													
Pump motor power	kW	167			185				185		205			kW	Pump motor power
Heating power	kW	116			133				174		215			kW	Heating power
Machine dimension (L x W x H) ⑤	m	12.52x4.22x4.52			12.91x4.22x4.52				13.90x4.22x4.53		14.41x4.22x4.57			m	Machine dimension (L x W x H) ⑤
Machine weight	t	95			99				103		111			t	Machine weight
Hopper capacity	kg	200			200				200		200			kg	Hopper capacity
Oil tank ⑥	l	1550			1750				1920		2390			l	Oil tank ⑥

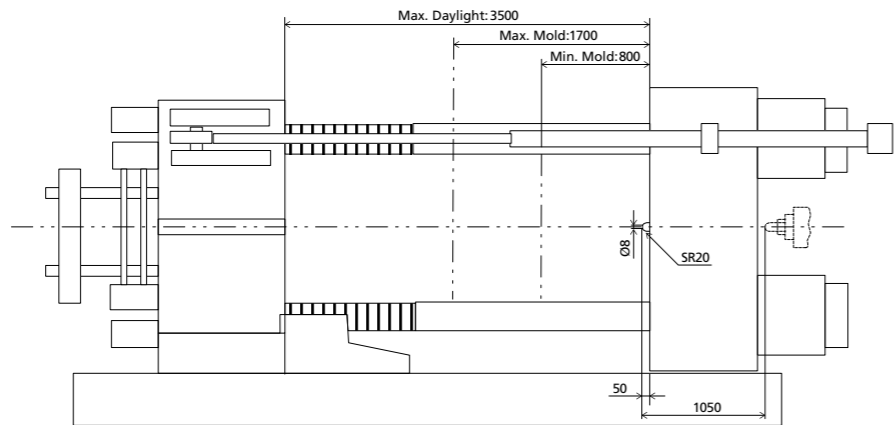
NOTE:

- ① with min. mold height / with max. mold height.
- ② moving platen: 2/3 of max. mold weight.
- ③ Plasticizing capacity (GPPS): GB standard, with application of GPPS plasticizing capacity of 3-zone screws.
- ④ Plasticizing capacity (HDPE): Euromap 19, with application of HDPE plasticizing capacity of barrier screws  
The above plasticizing capacity is for reference only.
- ⑤ This refers to the machine's net size, not including the width of the operation platform and ladder.
- ⑥ The oil tank volume refers to the volume of the oil tank itself, excluding the volume in cylinder and pipeline. In this sense, the customer is advised to prepare the hydraulic oil according to 1.35 times of the oil tank volume.

We reserve the right to make changes as a result of further technical advantages.

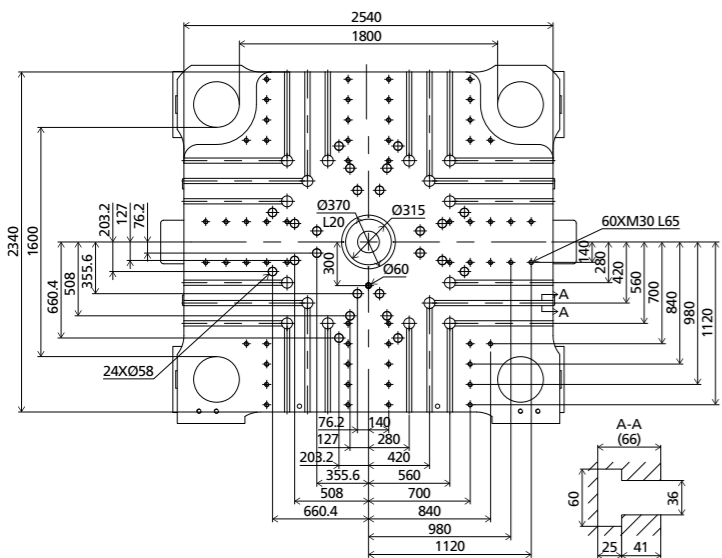
# DIMENSIONS JU21000/SE

## Clamping Unit



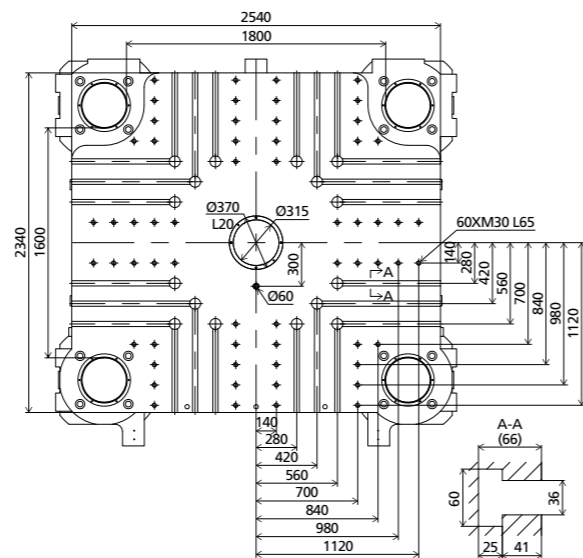
## Platen dimensions

Moving platen



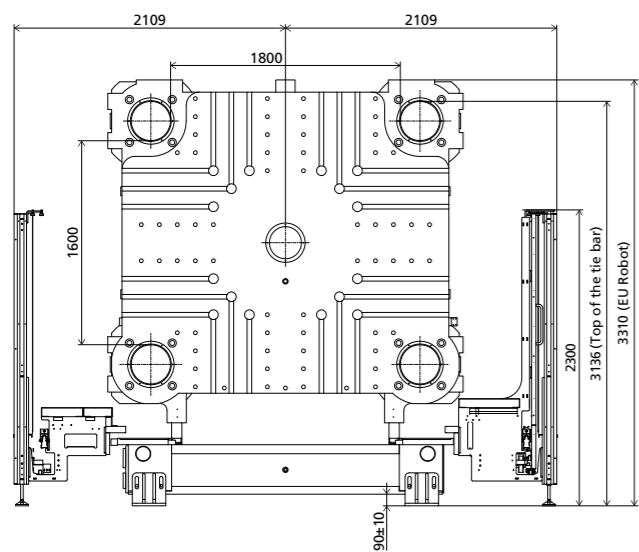
## Platen dimensions

Fixed platen



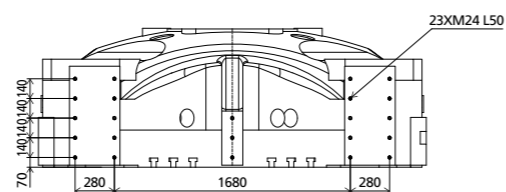
## Robot

Mechanical interface

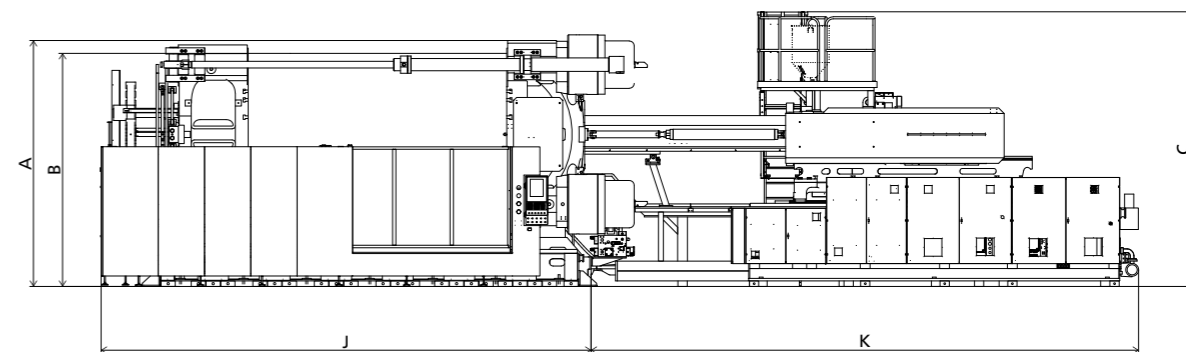


## Robot

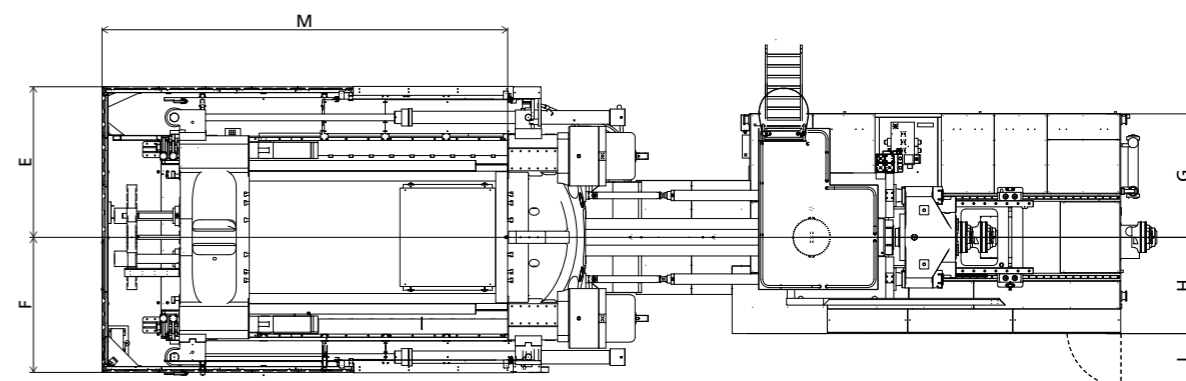
Top view fixed platen



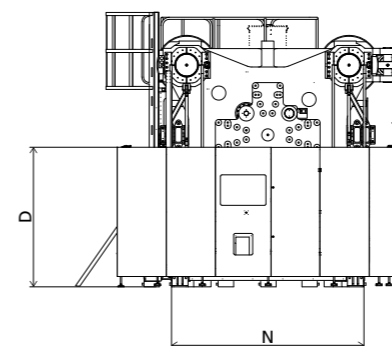
## Front view



## Top view



## Side view



Standard

	A	B	C	D	E	F	G	H	I	J	K	M	N
16600	3310	3136	4516	2070	2109	2109	1855	1305	870	6456	6060	5471	2442
20200	3310	3136	4511	2070	2109	2109	1935	1435	870	6456	6452	5471	2442
28900	3310	3136	4521	2070	2109	2109	1935	1435	870	6456	7440	5471	2442
41000	3310	3136	4561	2070	2109	2109	1965	1515	870	6456	7946	5471	2442

We reserve the right to make changes as a result of further technical advantages.

## SPECIFICATION JU24000/SE

SPECIFICATIONS

INJECTION UNIT

	28900	JU24000/SE		52000	
		41000			
<b>CLAMPING UNIT</b>					
Clamping force	kN		24000		kN
Dist. between tie bars (H×V)	mm		1900×1700		mm
Mold height max.	mm		1800		mm
Mold height min.	mm		800		mm
Ejector stroke	mm		500		mm
Ejector force	kN		450		kN
Max. daylight	mm		3800		mm
Mold opening stroke ①	mm		3000/2000		mm
Max. mold weight ②	t		59		t
<b>INJECTION UNIT</b>					
		A	B		
Screw diameter	mm	160	170	200	mm
Screw L /D ratio	L/D	24	22.6	20	L/D
Injection volume (theoretical)	cm <sup>3</sup>	17492	19747	35186	cm <sup>3</sup>
Injection weight (PS)	g	15918	17970	32019	g
Injection rate	g/s	1520	1716	2029	g/s
Injection pressure	MPa	165	147	148	MPa
Plasticizing rate (GPPS) ③	g/s	--	--	--	g/s
Plasticizing rate (HDPE) ④	g/s	280	310	380	g/s
Screw speed	rpm	72	70	70	rpm
<b>OTHERS</b>					
Pump motor power	kW	185	205	255	kW
Heating power	kW	174	215	215	kW
Machine dimension (L x W x H) ⑤	m	14.56×4.44×4.68	15.15×4.44×4.72	15.47×4.44×4.76	m
Machine weight	t	120	127	132	t
Hopper capacity	kg	200	200	200	kg
Oil tank ⑥	l	1920	2390	2900	l

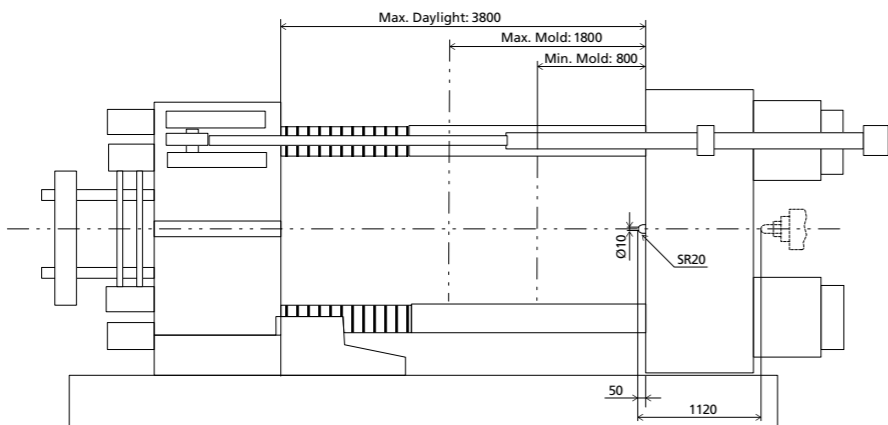
NOTE:

- ① with min. mold height / with max. mold height.
- ② moving platen: 2/3 of max. mold weight.
- ③ Plasticizing capacity (GPPS): GB standard, with application of GPPS plasticizing capacity of 3-zone screws.
- ④ Plasticizing capacity (HDPE): Euromap 19, with application of HDPE plasticizing capacity of barrier screws  
The above plasticizing capacity is for reference only.
- ⑤ This refers to the machine's net size, not including the width of the operation platform and ladder.
- ⑥ The oil tank volume refers to the volume of the oil tank itself, excluding the volume in cylinder and pipeline. In this sense, the customer is advised to prepare the hydraulic oil according to 1.35 times of the oil tank volume.

We reserve the right to make changes as a result of further technical advantages.

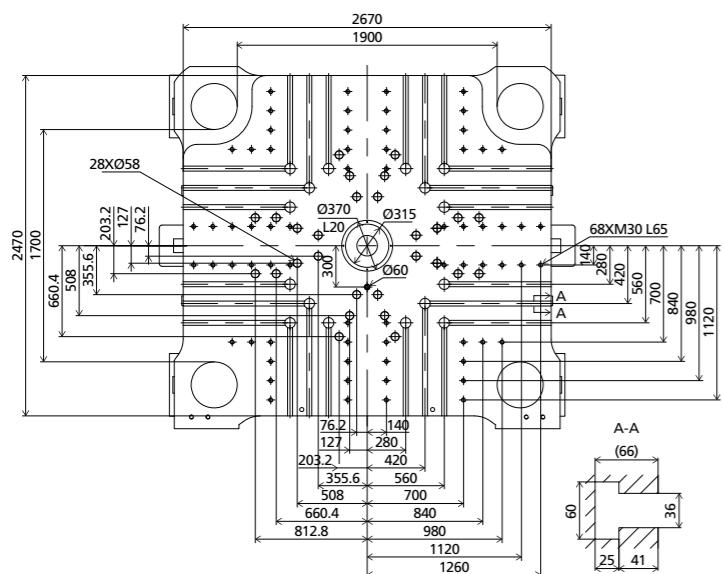
# DIMENSIONS JU24000/SE

## Clamping Unit



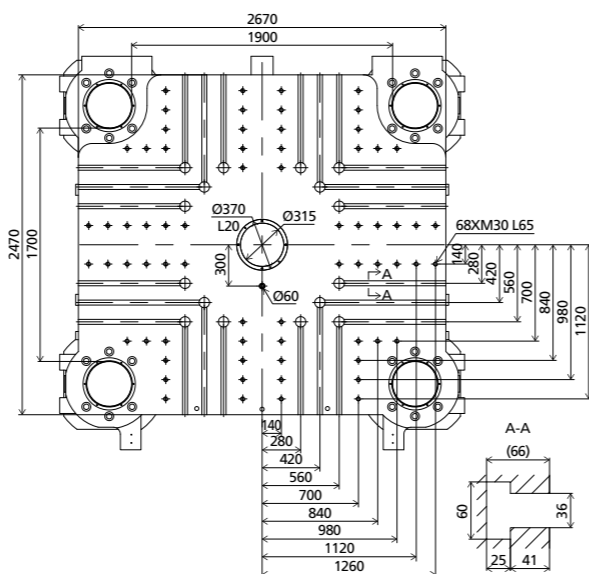
## Platen dimensions

Moving platen



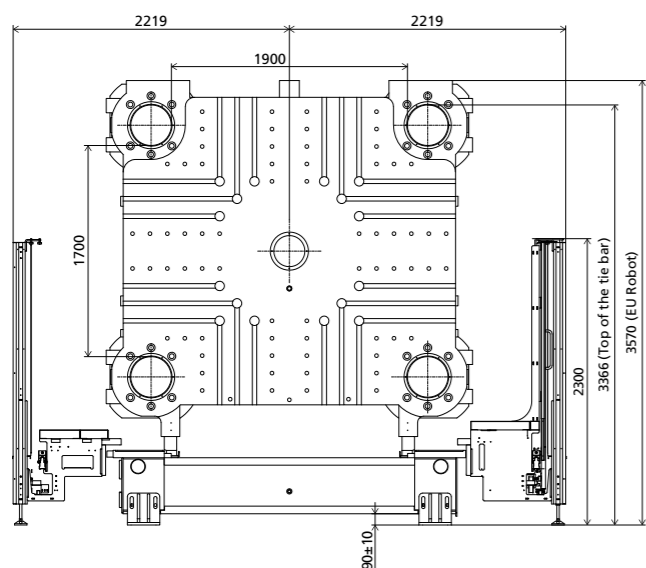
## Platen dimensions

Fixed platen



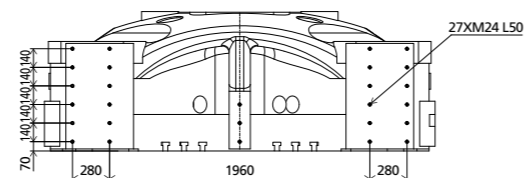
## Robot

Mechanical interface

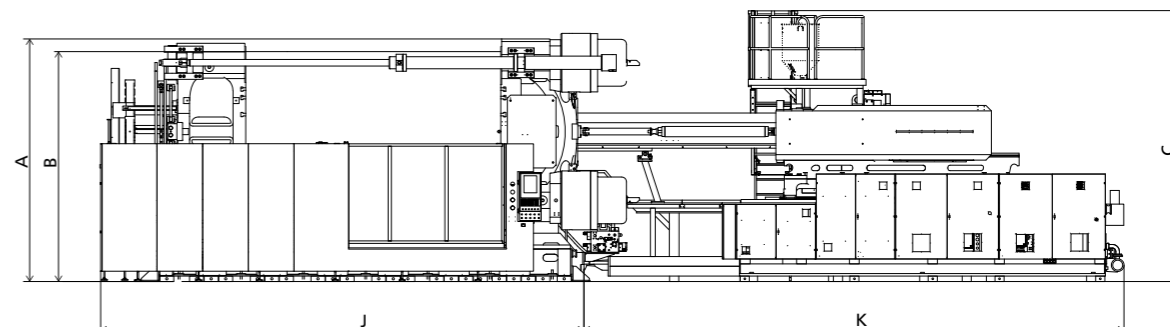


## Robot

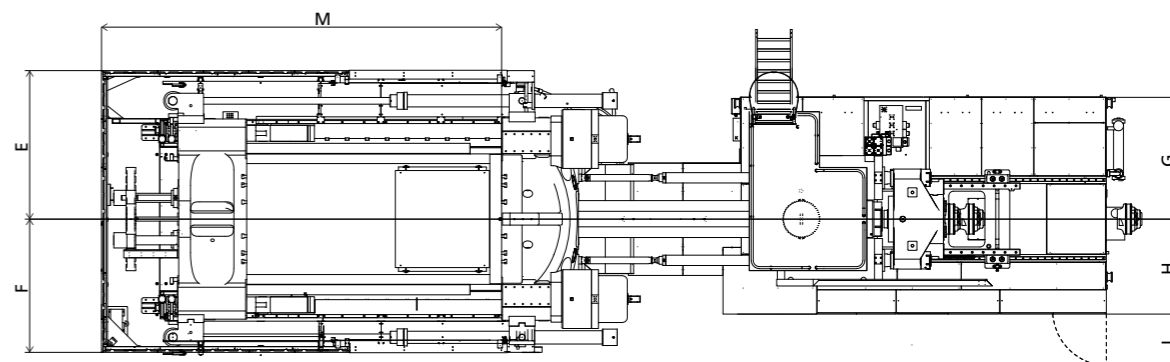
Top view fixed platen



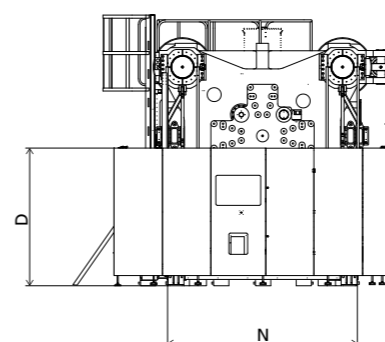
## Front view



## Top view



## Side view



We reserve the right to make changes as a result of further technical advantages.

INJECTION UNIT  
DIMENSIONS (mm)

Standard

	A	B	C	D	E	F	G	H	I	J	K	M	N
28900	3570	3366	4676	2070	2219	2219	1935	1435	870	7112	7440	5917	2672
41000	3570	3366	4716	2070	2219	2219	1965	1515	870	7112	7947	5917	2672
52000	3570	3366	4756	2070	2219	2219	2010	1565	870	7112	8355	5917	2672



## SPECIFICATION JU28000/SE

SPECIFICATIONS  
INJECTION UNIT

	41000	JU28000/SE		61000	
		A	B		
<b>CLAMPING UNIT</b>					
Clamping force	kN			28000	kN
Dist. between tie bars (H×V)	mm			2000×1800	mm
Mold height max.	mm			2000	mm
Mold height min.	mm			800	mm
Ejector stroke	mm			500	mm
Ejector force	kN			450	kN
Max. daylight	mm			4100	mm
Mold opening stroke ①	mm			3300/2100	mm
Max. mold weight ②	t			66	t
<b>INJECTION UNIT</b>					
Screw diameter	mm	170	185	200	220
Screw L /D ratio	L/D	23.5	21.6	20	20.5
Injection volume (theoretical)	cm <sup>3</sup>	23379	27687	35186	45616
Injection weight (PS)	g	21275	25195	32019	41510
Injection rate	g/s	1441	1707	2029	2243
Injection pressure	MPa	174	147	148	134
Plasticizing rate (GPPS) ③	g/s	--	--	--	--
Plasticizing rate (HDPE) ④	g/s	309	320	380	370
Screw speed	rpm	70	70	70	53
<b>OTHERS</b>					
Pump motor power	kW	205	255	255	255
Heating power	kW	215	215	215	223
Machine dimension (L x W x H) ⑤	m	15.56×4.54×4.83	15.97×4.54×4.87	15.97×4.54×4.87	16.50×4.54×4.87
Machine weight	t	144	148	148	152
Hopper capacity	kg	200	200	200	200
Oil tank ⑥	l	2390	2900	2900	2900

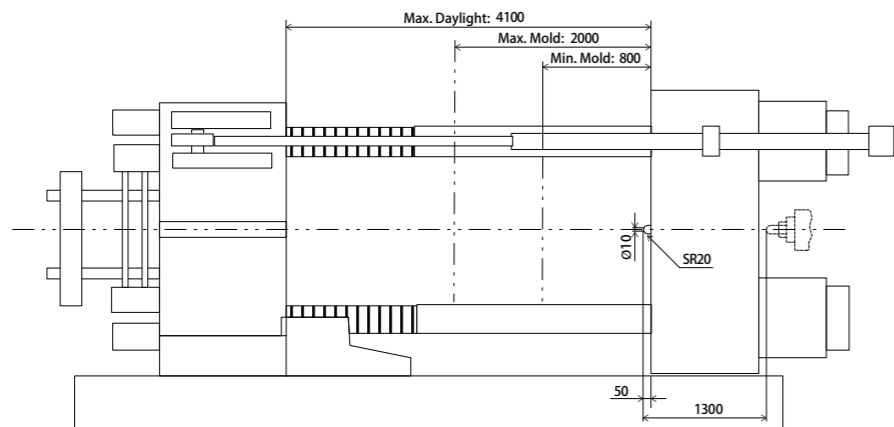
NOTE:

- ① with min. mold height / with max. mold height.
- ② moving platen: 2/3 of max. mold weight.
- ③ Plasticizing capacity (GPPS): GB standard, with application of GPPS plasticizing capacity of 3-zone screws.
- ④ Plasticizing capacity (HDPE): Euromap 19, with application of HDPE plasticizing capacity of barrier screws  
The above plasticizing capacity is for reference only.
- ⑤ This refers to the machine's net size, not including the width of the operation platform and ladder.
- ⑥ The oil tank volume refers to the volume of the oil tank itself, excluding the volume in cylinder and pipeline. In this sense, the customer is advised to prepare the hydraulic oil according to 1.35 times of the oil tank volume.

We reserve the right to make changes as a result of further technical advantages.

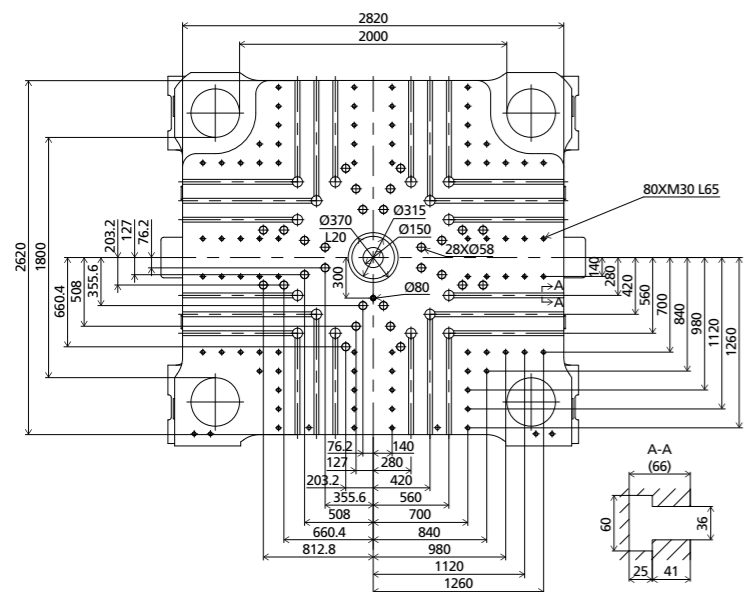
# DIMENSIONS JU28000/SE

## Clamping Unit



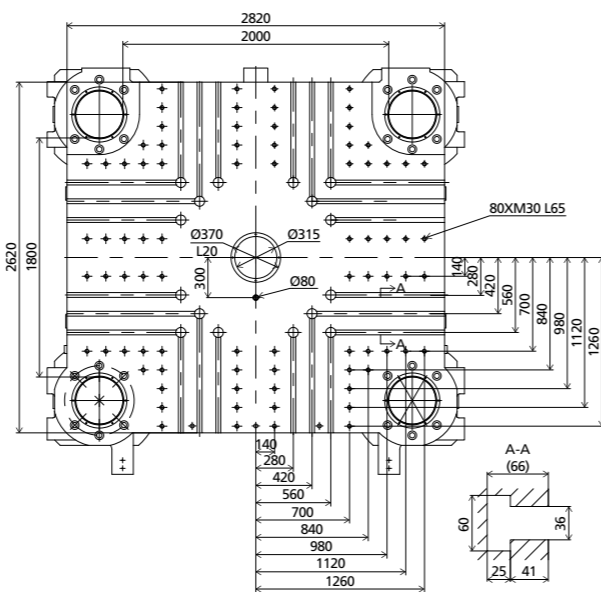
## Platen dimensions

Moving platen



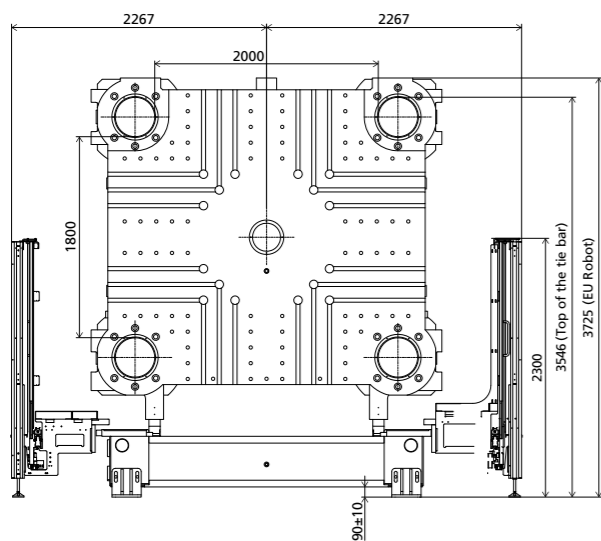
## Platen dimensions

Fixed platen



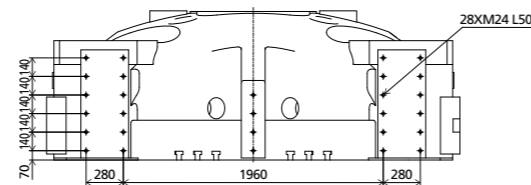
## Robot

Mechanical interface

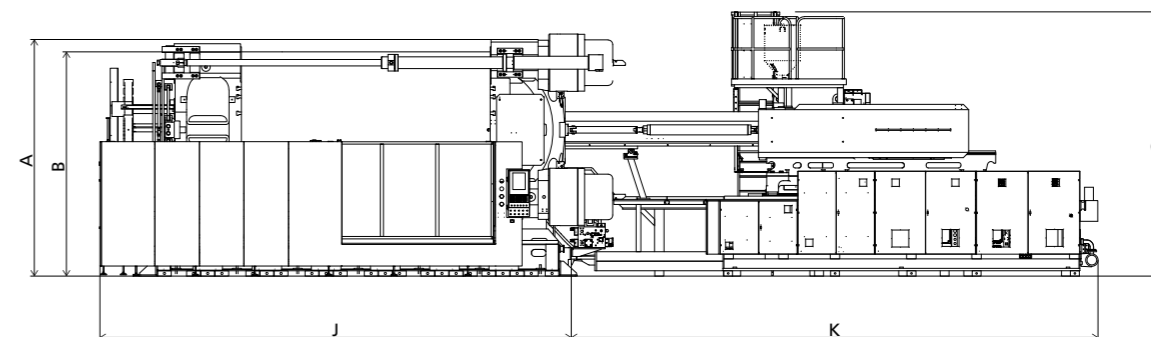


## Robot

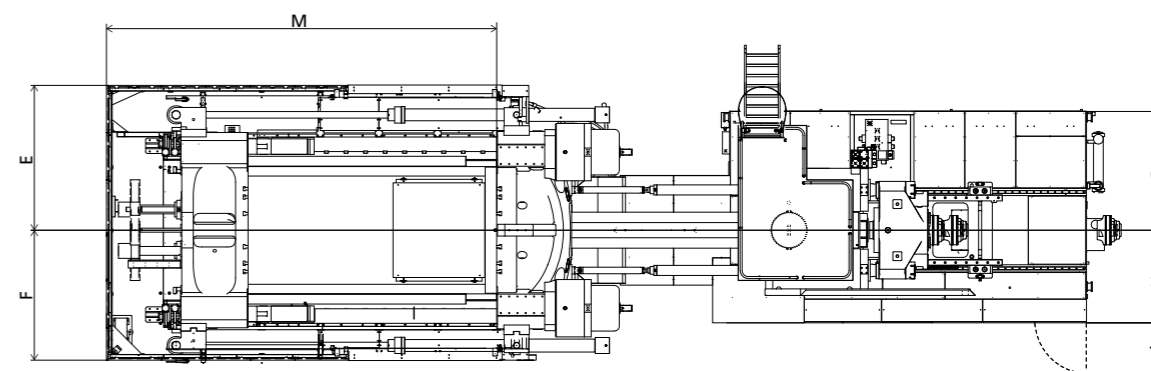
Top view fixed platen



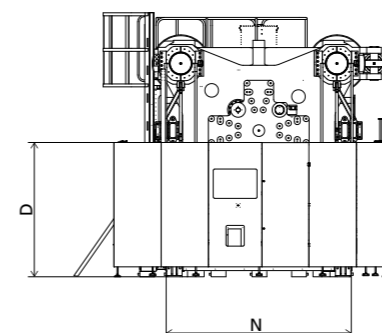
## Front view



## Top view



## Side view



Standard

	A	B	C	D	E	F	G	H	I	J	K	M	N
41000	3725	3546	4826	2270	2267	2267	1965	1515	870	7605	7946	6335	2767
52000	3725	3546	4866	2270	2267	2267	2010	1565	870	7605	8356	6335	2767
61000	3725	3546	4866	2270	2267	2267	2010	1565	870	7605	8895	6335	2767

INJECTION UNIT  
DIMENSIONS (mm)

We reserve the right to make changes as a result of further technical advantages.

## SPECIFICATION JU33000/SE

SPECIFICATIONS  
INJECTION UNIT

	5200	JU33000/SE 61000	94000	
<b>CLAMPING UNIT</b>				
Clamping force	kN	33000		kN
Dist. between tie bars (H×V)	mm	2270×1900		mm
Mold height max.	mm	2000		mm
Mold height min.	mm	1000		mm
Ejector stroke	mm	550		mm
Ejector force	kN	580		kN
Max. daylight	mm	4200		mm
Mold opening stroke ①	mm	3200/2200		mm
Max. mold weight ②	t	75		t
<b>INJECTION UNIT</b>				
Screw diameter	mm	200	240	mm
Screw L /D ratio	L/D	20	23	L/D
Injection volume (theoretical)	cm <sup>3</sup>	35186	60168	cm <sup>3</sup>
Injection weight (PS)	g	32019	54753	g
Injection rate	g/s	2029	2694	g/s
Injection pressure	MPa	148	156	MPa
Plasticizing rate (GPPS) ③	g/s	--	--	g/s
Plasticizing rate (HDPE) ④	g/s	380	470	g/s
Screw speed	rpm	70	50	rpm
<b>OTHERS</b>				
Pump motor power	kW	255	375	kW
Heating power	kW	215	290	kW
Machine dimension (L x W x H) ⑤	m	16.32×4.90×5.03	18.25×4.90×5.05	m
Machine weight	t	178	188	t
Hopper capacity	kg	200	200	kg
Oil tank ⑥	l	2900	4000	l

NOTE:

- ① with min. mold height / with max. mold height.
- ② moving platen: 2/3 of max. mold weight.
- ③ Plasticizing capacity (GPPS): GB standard, with application of GPPS plasticizing capacity of 3-zone screws.
- ④ Plasticizing capacity (HDPE): Euromap 19, with application of HDPE plasticizing capacity of barrier screws  
The above plasticizing capacity is for reference only.
- ⑤ This refers to the machine's net size, not including the width of the operation platform and ladder.
- ⑥ The oil tank volume refers to the volume of the oil tank itself, excluding the volume in cylinder and pipeline. In this sense, the customer is advised to prepare the hydraulic oil according to 1.35 times of the oil tank volume.

We reserve the right to make changes as a result of further technical advantages.



## SPECIFICATION JU40000/SE

SPECIFICATIONS  
INJECTION UNIT

	61000	JU40000/SE 94000		JU40000/SE 94000
<b>CLAMPING UNIT</b>			<b>CLAMPING UNIT</b>	
Clamping force	kN		40000	kN
Dist. between tie bars (H×V)	mm		2400×2000	mm
Mold height max.	mm		2200	mm
Mold height min.	mm		1000	mm
Ejector stroke	mm		550	mm
Ejector force	kN		580	kN
Max. daylight	mm		4460	mm
Mold opening stroke ①	mm		3460/2260	mm
Max. mold weight ②	t		86	t
<b>INJECTION UNIT</b>			<b>INJECTION UNIT</b>	
Screw diameter	mm	220	240	mm
Screw L /D ratio	L/D	20.5	23	L/D
Injection volume (theoretical)	cm <sup>3</sup>	45616	60168	cm <sup>3</sup>
Injection weight (PS)	g	41510	54753	g
Injection rate	g/s	2243	2694	g/s
Injection pressure	MPa	134	156	MPa
Plasticizing rate (GPPS) ③	g/s	--	--	g/s
Plasticizing rate (HDPE) ④	g/s	370	470	g/s
Screw speed	rpm	53	50	rpm
<b>OTHERS</b>			<b>OTHERS</b>	
Pump motor power	kW	255	375	kW
Heating power	kW	223	290	kW
Machine dimension (L x W x H) ⑤	m	17.29×5.23×5.11	19.45×5.23×5.13	m
Machine weight	t	218	225	t
Hopper capacity	kg	200	200	kg
Oil tank ⑥	l	2900	4000	l

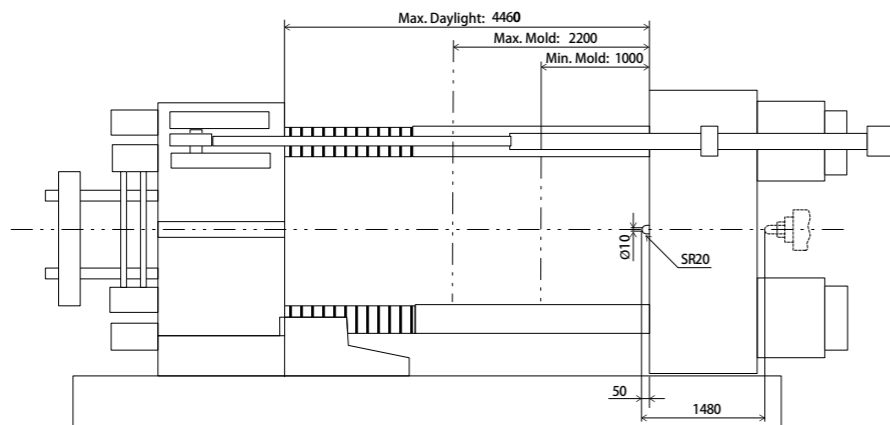
NOTE:

- ① with min. mold height / with max. mold height.
- ② moving platen: 2/3 of max. mold weight.
- ③ Plasticizing capacity (GPPS): GB standard, with application of GPPS plasticizing capacity of 3-zone screws.
- ④ Plasticizing capacity (HDPE): Euromap 19, with application of HDPE plasticizing capacity of barrier screws  
The above plasticizing capacity is for reference only.
- ⑤ This refers to the machine's net size, not including the width of the operation platform and ladder.
- ⑥ The oil tank volume refers to the volume of the oil tank itself, excluding the volume in cylinder and pipeline. In this sense, the customer is advised to prepare the hydraulic oil according to 1.35 times of the oil tank volume.

We reserve the right to make changes as a result of further technical advantages.

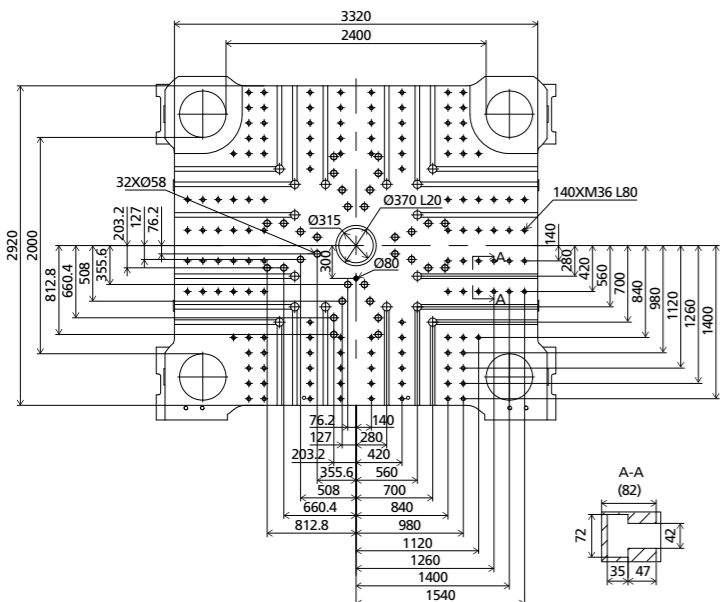
# DIMENSIONS JU40000/SE

## Clamping Unit



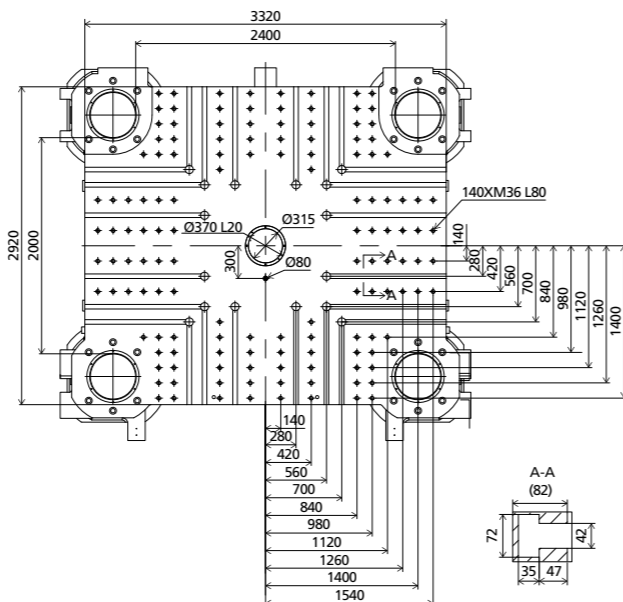
## Platen dimensions

Moving platen



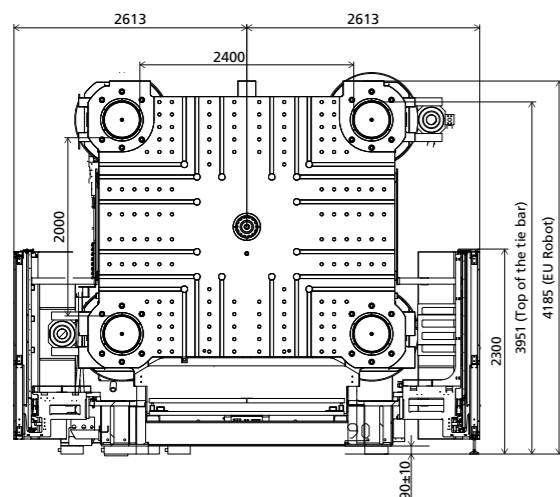
## Platen dimensions

Fixed platen



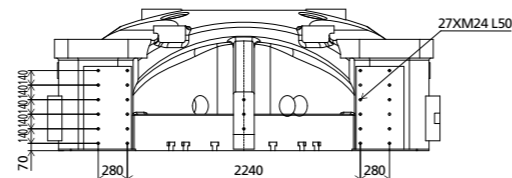
## Robot

Mechanical interface

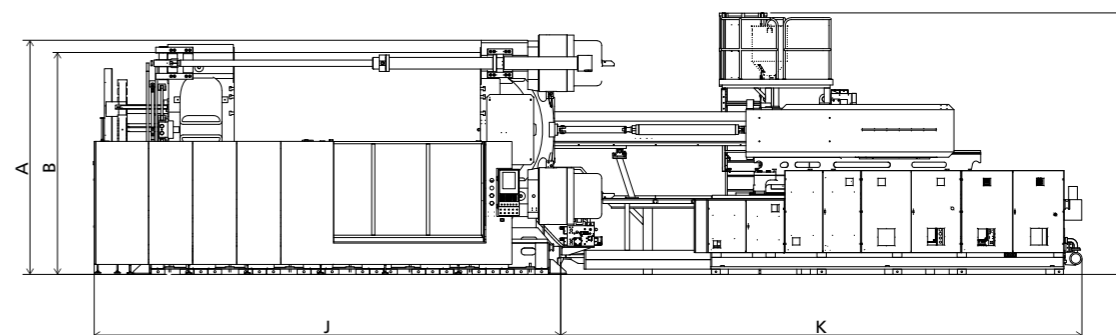


## Robot

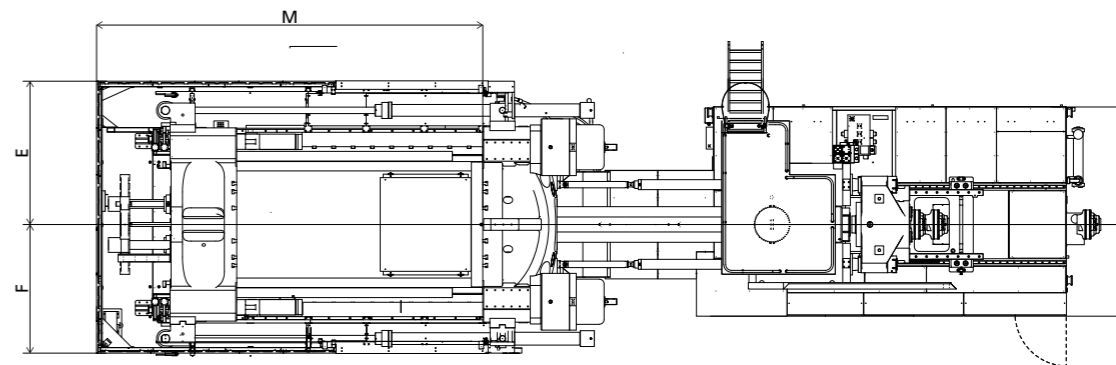
Top view fixed platen



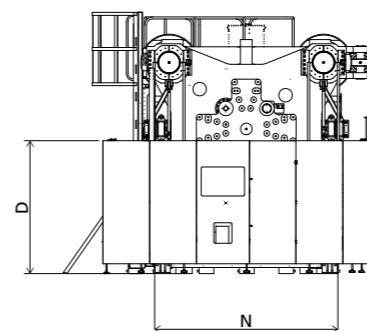
## Front view



## Top view



## Side view



Standard

	A	B	C	D	E	F	G	H	I	J	K	M	N
61000	4185	3951	5106	2270	2613	2613	2010	1565	870	8395	8895	6935	3260
94000	4185	3951	5129	2270	2613	2613	2085	1635	870	8395	10288	6935	3260

INJECTION UNIT  
DIMENSIONS (mm)

We reserve the right to make changes as a result of further technical advantages.