

HAITIAN PLASTICS MACHINERY GROUP CO., LTD
No. 1688 Haitian Road, Xiaogang, Beilun, Ningbo, P. R. China.
+ 86-574-8617 7005 (China)
+ 86-574-8617 7242 (International)
haitian@mail.haitian.com
www.haitianpm.com

NINGBO HAITIAN HUAYUAN MACHINERY CO.,LTD.
No.1, Nanhuan Road, Export Processing Zone, Beilun, Ningbo, Zhejiang, 315806 P.R. China
+86-574-8617 7242
+86-574-8622 1864
haitian@mail.haitian.com
www.haitianpm.com



SE



HAITIAN JU/SE SERIES

Servo hydraulic two-platen solution / Europe

4,500 - 10,800 kN



HT 20230207-EU



Combination Possibilities

4,500 - 10,800 kN

CLAMPING UNIT		INJECTION UNIT												
MACHINE TYPE	2400	3100	4300	5050	6500	8550	11200	16600	20200	28900	41000	52000	61000	94000
JU4500/SE	Standard range	Combination possibilities												
JU5500/SE	Combination possibilities	Standard range	Combination possibilities											
JU6500/SE		Combination possibilities	Standard range	Combination possibilities										
JU7500/SE			Combination possibilities	Standard range	Combination possibilities									
JU9000/SE				Combination possibilities	Standard range	Combination possibilities								
JU10800/SE					Combination possibilities	Standard range	Combination possibilities							
JU12000/SE														
JU13000/SE														
JU14000/SE														
JU16000/SE														
JU18500/SE														
JU21000/SE														
JU24000/SE														
JU28000/SE														
JU33000/SE														
JU40000/SE														

SPECIFICATION JU4500/SE

SPECIFICATIONS
INJECTION UNIT

		JU4500/SE				3100					
		2400				3100					
CLAMPING UNIT										CLAMPING UNIT	
Clamping force	kN	4500								kN	Clamping force
Dist. between tie bars (H×V)	mm	810×800								mm	Dist. between tie bars (H×V)
Mold height max.	mm	850								mm	Mold height max.
Mold height min.	mm	350								mm	Mold height min.
Ejector stroke	mm	250								mm	Ejector stroke
Ejector force	kN	110								kN	Ejector force
Max. daylight	mm	1400								mm	Max. daylight
Mold opening stroke ①	mm	1050/550								mm	Mold opening stroke ①
Max. mold weight ②	t	6.5								t	Max. mold weight ②
INJECTION UNIT		A	B	C	D	A	B	C	D	INJECTION UNIT	
Screw diameter	mm	65	70	75	80	70	80	85	90	mm	Screw diameter
Screw L /D ratio	L/D	21.5	20	18.7	17.5	22.9	20	18.9	17.8	L/D	Screw L /D ratio
Injection volume (theoretical)	cm ³	1068	1239	1423	1619	1424	1860	2100	2354	cm ³	Injection volume (theoretical)
Injection weight (PS)	g	972	1128	1295	1473	1296	1692	1911	2142	g	Injection weight (PS)
Injection rate	g/s	304	353	405	461	383	501	565	634	g/s	Injection rate
Injection pressure	MPa	223	192	167	147	218	167	148	132	MPa	Injection pressure
Plasticizing rate (GPPS) ③	g/s	60.0	68.8	77.8	86.4	71.2	93.8	103	116	g/s	Plasticizing rate (GPPS) ③
Plasticizing rate (HDPE) ④	g/s	85.7	102	114	129	102	137	155	179	g/s	Plasticizing rate (HDPE) ④
Screw speed	rpm	225				220				rpm	Screw speed
OTHERS										OTHERS	
Pump motor power	kW	45				55				kW	Pump motor power
Heating power	kW	33				39				kW	Heating power
Machine dimension (L x W x H) ⑤	m	6.87×2.17×2.43				7.00×2.17×2.56				m	Machine dimension (L x W x H) ⑤
Machine weight	t	18				19				t	Machine weight
Hopper capacity	kg	50				50				kg	Hopper capacity
Oil tank ⑥	l	450				520				l	Oil tank ⑥

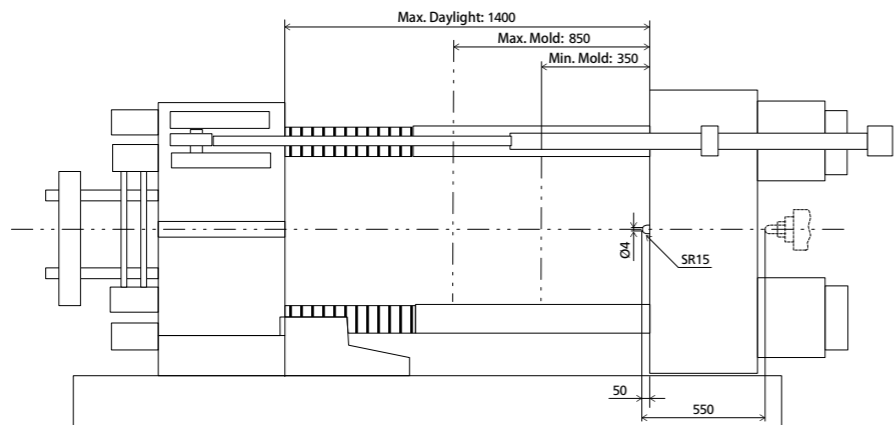
NOTE:

- ① with min. mold height / with max. mold height.
- ② moving platen: 2/3 of max. mold weight.
- ③ Plasticizing capacity (GPPS): GB standard, with application of GPPS plasticizing capacity of 3-zone screws.
- ④ Plasticizing capacity (HDPE): Euromap 19, with application of HDPE plasticizing capacity of barrier screws
The above plasticizing capacity is for reference only.
- ⑤ This refers to the machine's net size, not including the width of the operation platform and ladder.
- ⑥ The oil tank volume refers to the volume of the oil tank itself, excluding the volume in cylinder and pipeline. In this sense, the customer is advised to prepare the hydraulic oil according to 1.35 times of the oil tank volume.

We reserve the right to make changes as a result of further technical advantages.

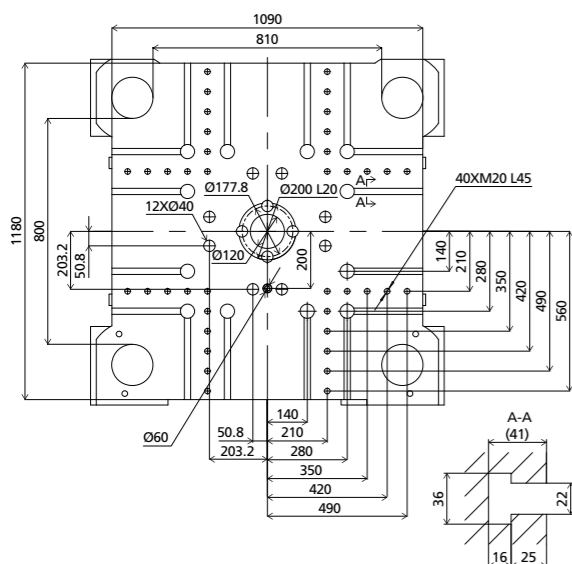
DIMENSIONS JU4500/SE

Clamping Unit



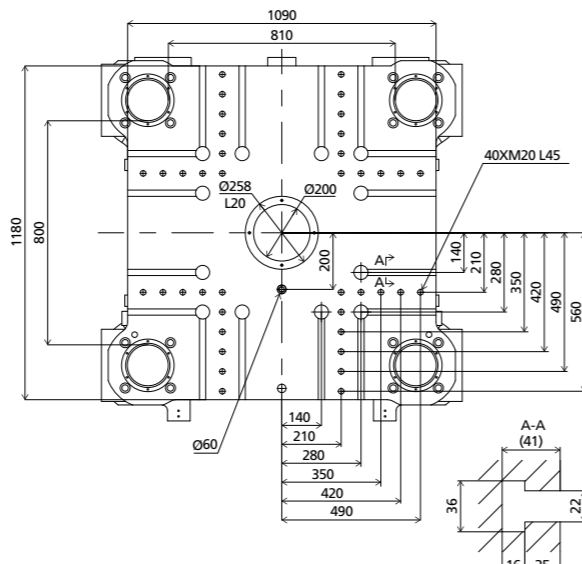
Platen dimensions

Moving platen



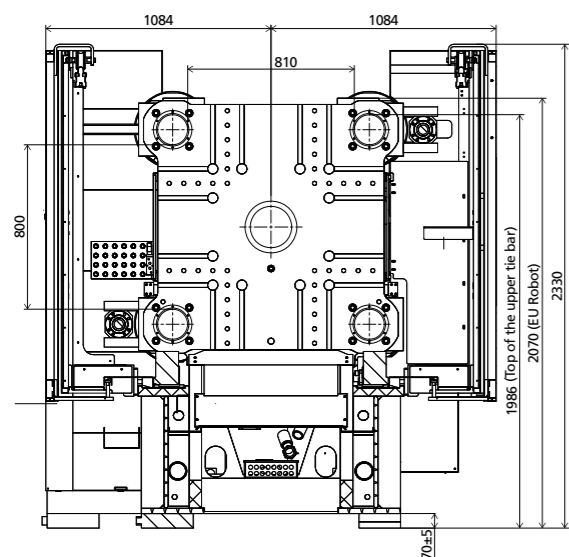
Platen dimensions

Fixed platen



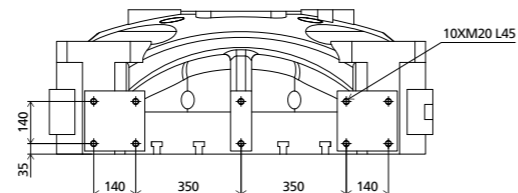
Robot

Mechanical interface

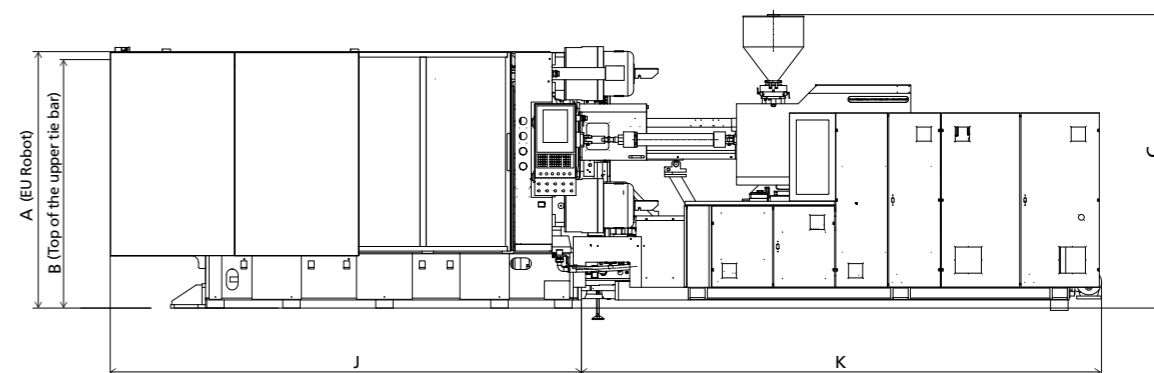


Robot

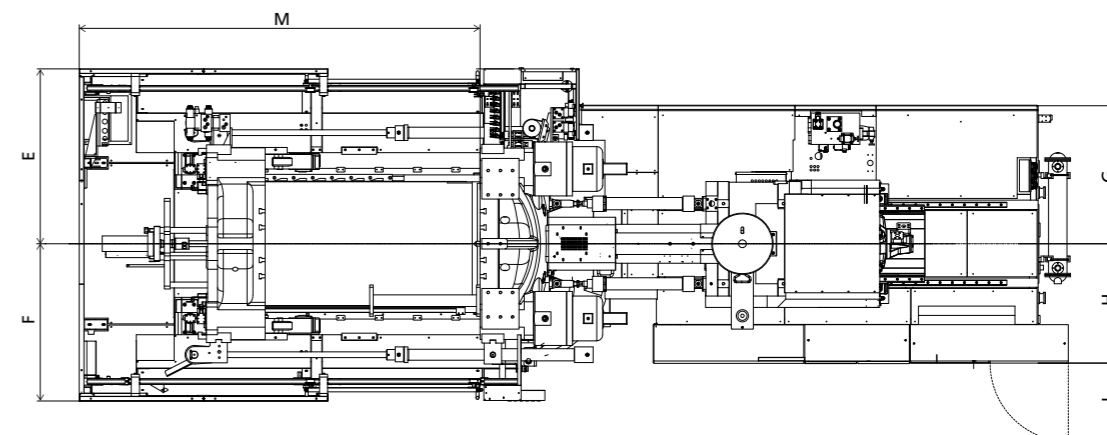
Top view fixed platen



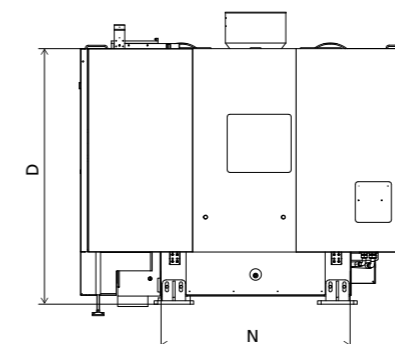
Front view



Top view



Side view



Standard

	A	B	C	D	E	F	G	H	I	J	K	M	N
2400	2070	1986	2427	2300	1048	1048	1063	903	675	3268	3597	2774	1248
3100	2070	1986	2554	2300	1048	1048	1068	903	675	3268	3720	2774	1248

INJECTION UNIT
DIMENSIONS (mm)

We reserve the right to make changes as a result of further technical advantages.

SPECIFICATION JU5500/SE

SPECIFICATIONS
INJECTION UNIT

		2400				3100				4300					
CLAMPING UNIT												CLAMPING UNIT			
Clamping force	kN	5500										kN	Clamping force		
Dist. between tie bars (HxV)	mm	920x830										mm	Dist. between tie bars (HxV)		
Mold height max.	mm	900										mm	Mold height max.		
Mold height min.	mm	350										mm	Mold height min.		
Ejector stroke	mm	250										mm	Ejector stroke		
Ejector force	kN	110										kN	Ejector force		
Max. daylight	mm	1650										mm	Max. daylight		
Mold opening stroke ①	mm	1300/750										mm	Mold opening stroke ①		
Max. mold weight ②	t	8										t	Max. mold weight ②		
INJECTION UNIT		A	B	C	D	A	B	C	D	A	B	C	D	INJECTION UNIT	
Screw diameter	mm	65	70	75	80	70	80	85	90	80	85	90	100	mm	Screw diameter
Screw L /D ratio	L/D	21.5	20	18.7	17.5	22.9	20	18.9	17.8	22	20.7	19.6	17.6	L/D	Screw L /D ratio
Injection volume (theoretical)	cm ³	1068	1239	1423	1619	1424	1860	2100	2354	2212	2497	2799	3456	cm ³	Injection volume (theoretical)
Injection weight (PS)	g	972	1128	1295	1473	1296	1692	1911	2142	2013	2272	2547	3145	g	Injection weight (PS)
Injection rate	g/s	304	353	405	461	383	501	565	634	492	555	623	769	g/s	Injection rate
Injection pressure	MPa	223	192	167	147	218	167	148	132	193	171	153	124	MPa	Injection pressure
Plasticizing rate (GPPS) ③	g/s	60.0	68.8	77.8	86.4	71.2	93.8	103	116	73.6	81.4	92.6	113	g/s	Plasticizing rate (GPPS) ③
Plasticizing rate (HDPE) ④	g/s	85.7	102	114	129	102	137	155	179	107	118	134	165	g/s	Plasticizing rate (HDPE) ④
Screw speed	rpm	225				220				165				rpm	Screw speed
OTHERS												OTHERS			
Pump motor power	kW	45				55				65				kW	Pump motor power
Heating power	kW	33				39				48				kW	Heating power
Machine dimension (L x W x H) ⑤	m	7.20x2.35x2.43				7.20x2.35x2.56				7.51x2.35x2.92				m	Machine dimension (L x W x H) ⑤
Machine weight	t	20				21				22				t	Machine weight
Hopper capacity	kg	50				50				100				kg	Hopper capacity
Oil tank ⑥	l	450				520				590				l	Oil tank ⑥

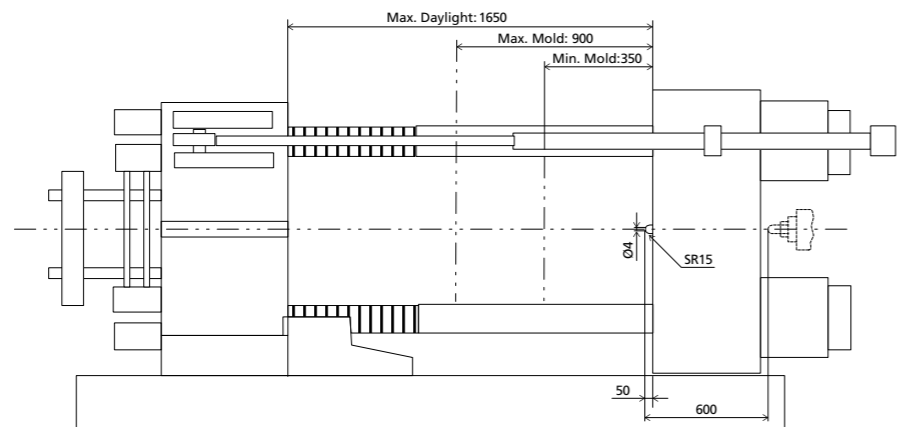
NOTE:

- ① with min. mold height / with max. mold height.
- ② moving platen: 2/3 of max. mold weight.
- ③ Plasticizing capacity (GPPS): GB standard, with application of GPPS plasticizing capacity of 3-zone screws.
- ④ Plasticizing capacity (HDPE): Euromap 19, with application of HDPE plasticizing capacity of barrier screws
The above plasticizing capacity is for reference only.
- ⑤ This refers to the machine's net size, not including the width of the operation platform and ladder.
- ⑥ The oil tank volume refers to the volume of the oil tank itself, excluding the volume in cylinder and pipeline. In this sense, the customer is advised to prepare the hydraulic oil according to 1.35 times of the oil tank volume.

We reserve the right to make changes as a result of further technical advantages.

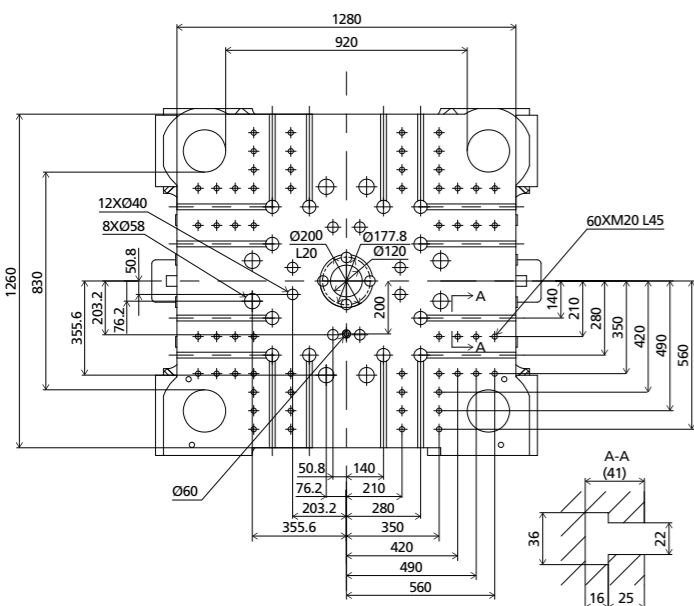
DIMENSIONS JU5500/SE

Clamping Unit



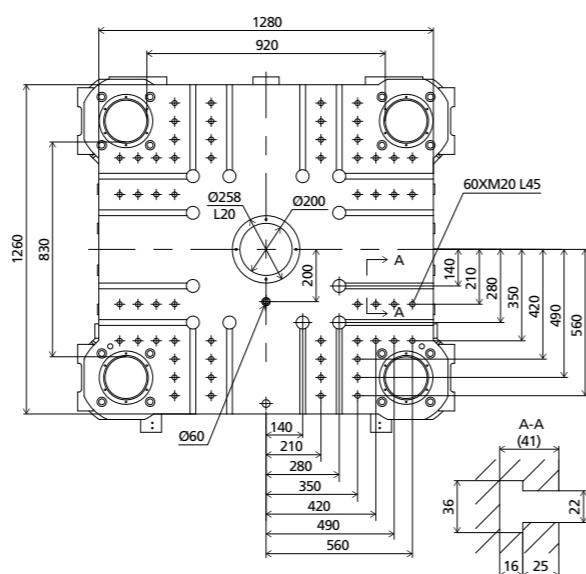
Platen dimensions

Moving platen



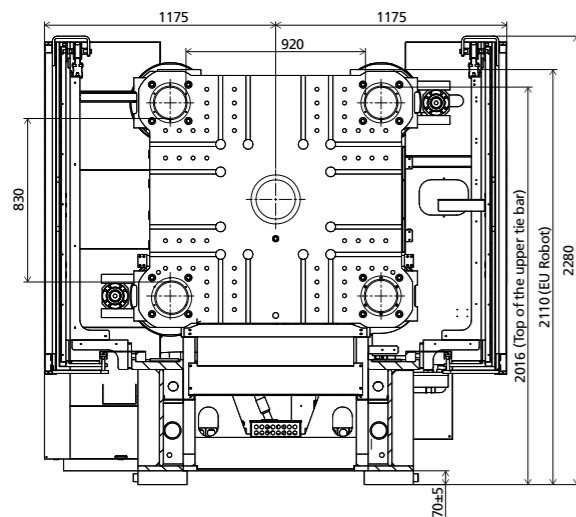
Platen dimensions

Fixed platen



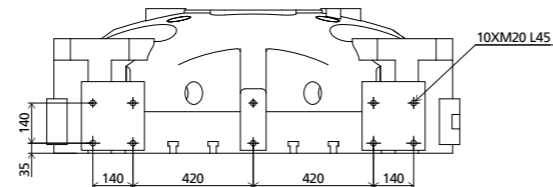
Robot

Mechanical interface

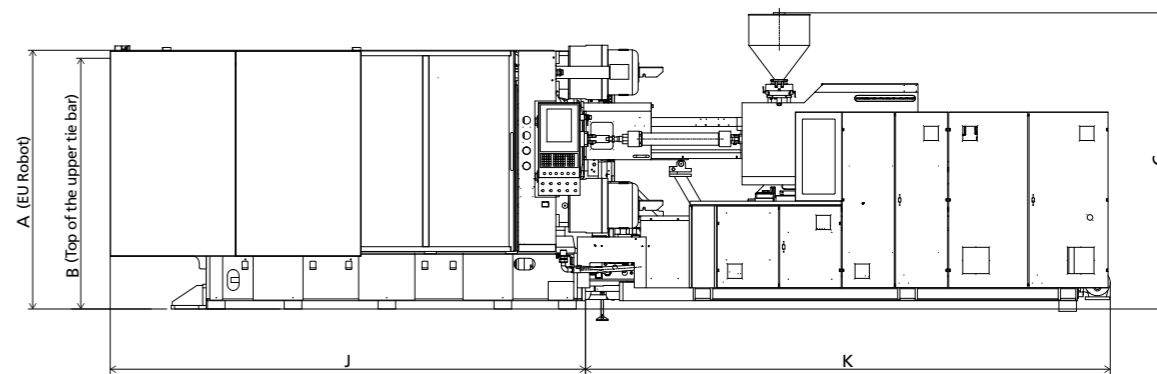


Robot

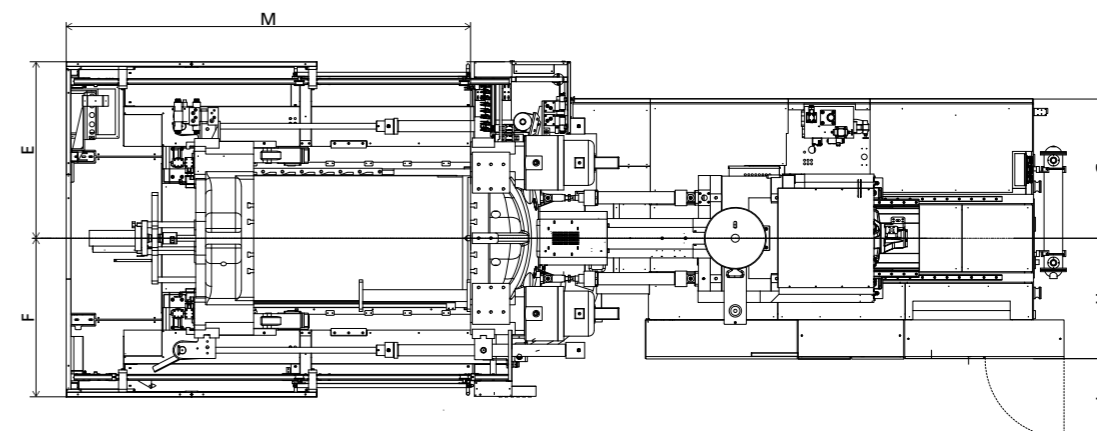
Top view fixed platen



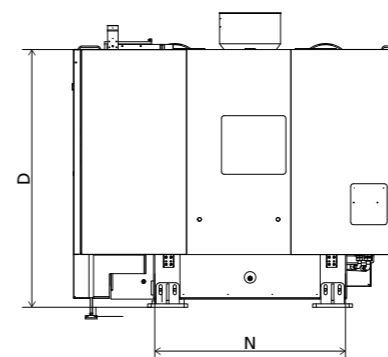
Front view



Top view



Side view



■ Standard

	A	B	C	D	E	F	G	H	I	J	K	M	N
2400	2110	2016	2427	2250	1175	1175	1063	903	675	3491	3705	3056	1382
3100	2110	2016	2554	2250	1175	1175	1068	903	675	3491	3612	3056	1382
4300	2110	2016	2916	2250	1175	1158	943	903	675	3491	4017	3056	1382

INJECTION UNIT
DIMENSIONS (mm)

We reserve the right to make changes as a result of further technical advantages.

SPECIFICATION JU6500/SE

SPECIFICATIONS
INJECTION UNIT

		3100				JU6500/SE 4300				5050					
CLAMPING UNIT														CLAMPING UNIT	
Clamping force	kN													kN	Clamping force
Dist. between tie bars (HxV)	mm													mm	Dist. between tie bars (HxV)
Mold height max.	mm													mm	Mold height max.
Mold height min.	mm													mm	Mold height min.
Ejector stroke	mm													mm	Ejector stroke
Ejector force	kN													kN	Ejector force
Max. daylight	mm													mm	Max. daylight
Mold opening stroke ①	mm													mm	Mold opening stroke ①
Max. mold weight ②	t													t	Max. mold weight ②
INJECTION UNIT		A	B	C	D	A	B	C	D	A	B	C	D	INJECTION UNIT	
Screw diameter	mm	70	80	85	90	80	85	90	100	80	90	100	110	mm	Screw diameter
Screw L /D ratio	L/D	22.9	20	18.9	17.8	22	20.7	19.6	17.6	24.8	22	19.8	18	L/D	Screw L /D ratio
Injection volume (theoretical)	cm ³	1424	1860	2100	2354	2212	2497	2799	3456	2262	2863	3534	4276	cm ³	Injection volume (theoretical)
Injection weight (PS)	g	1296	1692	1911	2142	2013	2272	2547	3145	2058	2605	3216	3892	g	Injection weight (PS)
Injection rate	g/s	383	501	565	634	492	555	623	769	484	612	756	915	g/s	Injection rate
Injection pressure	MPa	218	167	148	132	193	171	153	124	223	176	143	118	MPa	Injection pressure
Plasticizing rate (GPPS) ③	g/s	71.2	93.8	103	116	73.6	81.4	92.6	113	73.3	92.0	113	133	g/s	Plasticizing rate (GPPS) ③
Plasticizing rate (HDPE) ④	g/s	102	137	155	179	107	118	134	165	108	137	169	199	g/s	Plasticizing rate (HDPE) ④
Screw speed	rpm	220				165				150				rpm	Screw speed
OTHERS														OTHERS	
Pump motor power	kW	55				65				75				kW	Pump motor power
Heating power	kW	39				48				54				kW	Heating power
Machine dimension (L x W x H) ⑤	m	7.47x2.58x2.56				7.74x2.58x2.92				8.34x2.58x2.94				m	Machine dimension (L x W x H) ⑤
Machine weight	t	23				24				25				t	Machine weight
Hopper capacity	kg	50				100				100				kg	Hopper capacity
Oil tank ⑥	l	520				590				730				l	Oil tank ⑥

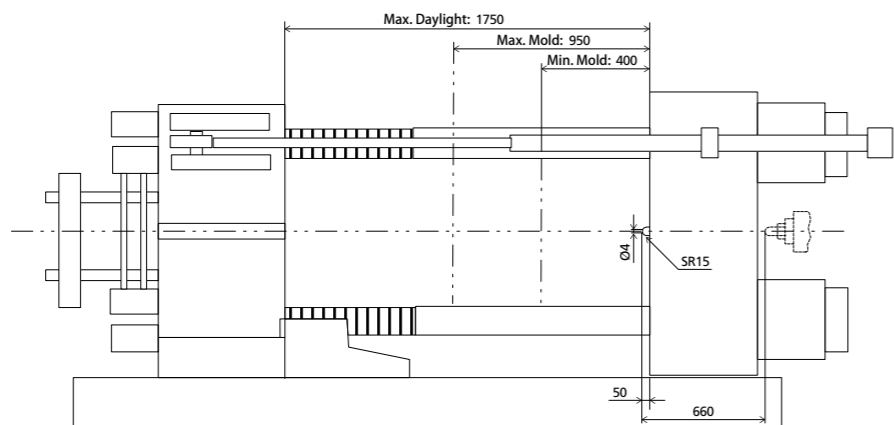
NOTE:

- ① with min. mold height / with max. mold height.
- ② moving platen: 2/3 of max. mold weight.
- ③ Plasticizing capacity (GPPS): GB standard, with application of GPPS plasticizing capacity of 3-zone screws.
- ④ Plasticizing capacity (HDPE): Euromap 19, with application of HDPE plasticizing capacity of barrier screws
The above plasticizing capacity is for reference only.
- ⑤ This refers to the machine's net size, not including the width of the operation platform and ladder.
- ⑥ The oil tank volume refers to the volume of the oil tank itself, excluding the volume in cylinder and pipeline. In this sense, the customer is advised to prepare the hydraulic oil according to 1.35 times of the oil tank volume.

We reserve the right to make changes as a result of further technical advantages.

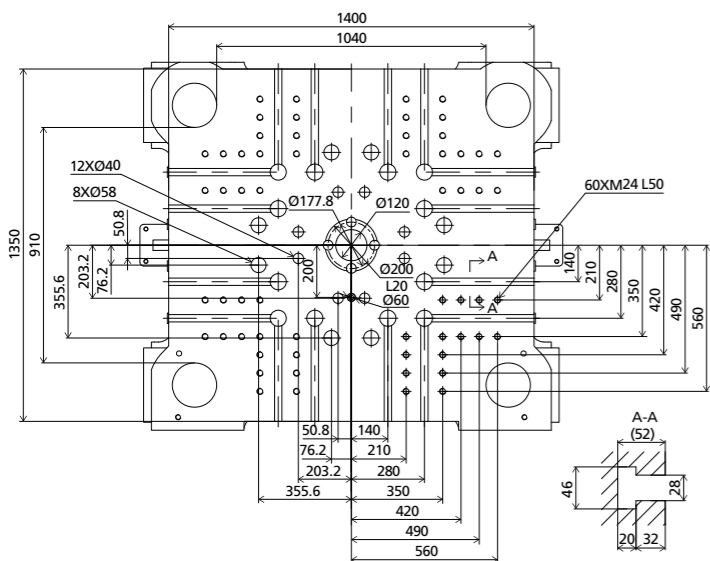
DIMENSIONS JU6500/SE

Clamping Unit



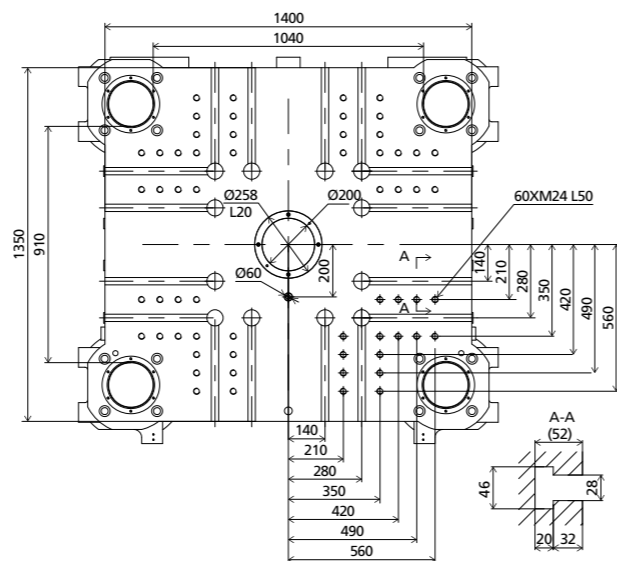
Platen dimensions

Moving platen



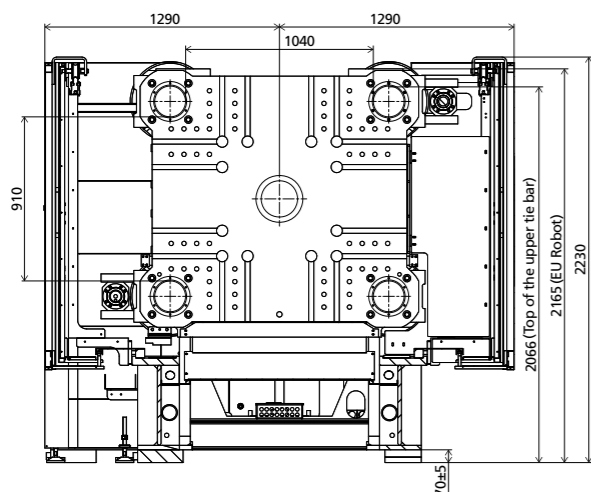
Platen dimensions

Fixed platen



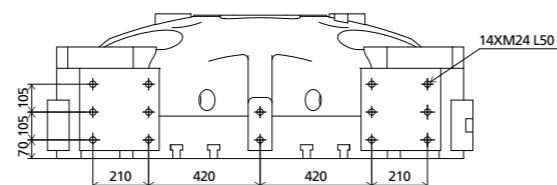
Robot

Mechanical interface

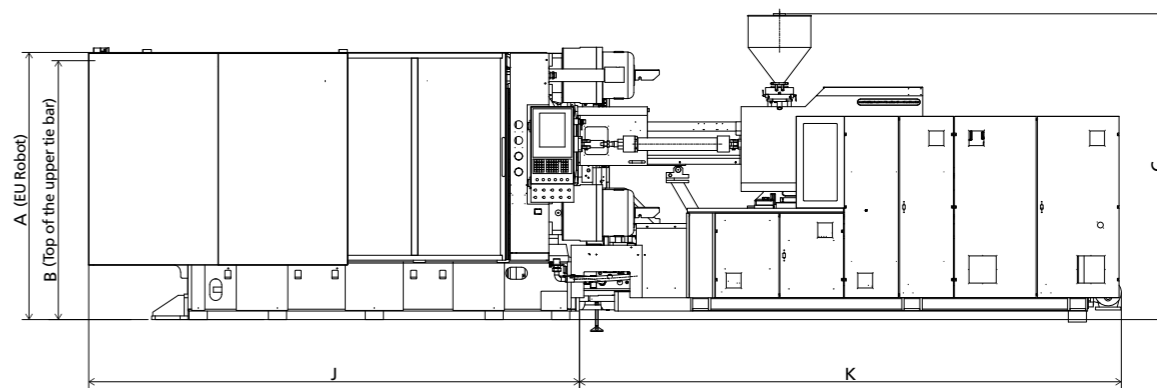


Robot

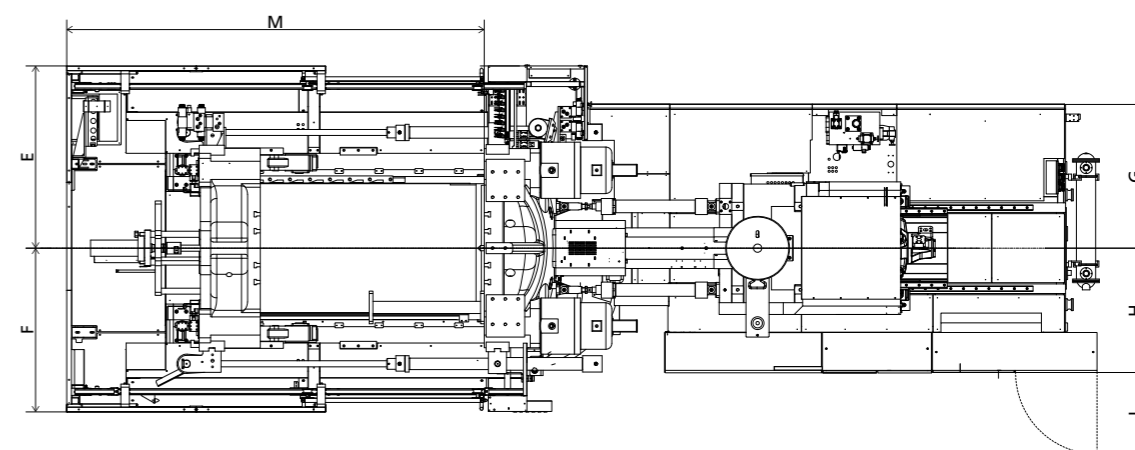
Top view fixed platen



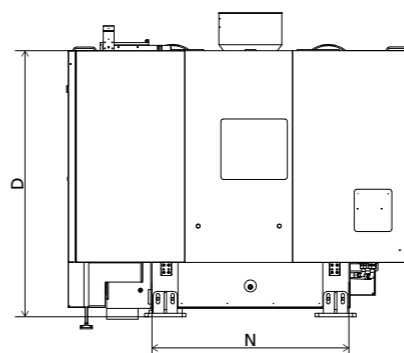
Front view



Top view



Side view



■ Standard

	A	B	C	D	E	F	G	H	I	J	K	M	N
3100	2165	2066	2554	2200	1290	1290	1068	903	675	3746	3720	3450	1542
4300	2165	2066	2916	2200	1290	1290	1158	943	675	3746	3909	3450	1542
5050	2165	2066	2931	2200	1290	1290	1168	1028	675	3746	4586	3450	1542

INJECTION UNIT
DIMENSIONS (mm)

We reserve the right to make changes as a result of further technical advantages.

SPECIFICATION JU7500/SE

SPECIFICATIONS
INJECTION UNIT

		4300				JU7500/SE 5050				6500					
CLAMPING UNIT														CLAMPING UNIT	
Clamping force	kN													kN	Clamping force
Dist. between tie bars (H×V)	mm													mm	Dist. between tie bars (H×V)
Mold height max.	mm													mm	Mold height max.
Mold height min.	mm													mm	Mold height min.
Ejector stroke	mm													mm	Ejector stroke
Ejector force	kN													kN	Ejector force
Max. daylight	mm													mm	Max. daylight
Mold opening stroke ①	mm													mm	Mold opening stroke ①
Max. mold weight ②	t													t	Max. mold weight ②
INJECTION UNIT		A	B	C	D	A	B	C	D	A	B	C	D	INJECTION UNIT	
Screw diameter	mm	80	85	90	100	80	90	100	110	90	100	110	120	mm	Screw diameter
Screw L /D ratio	L/D	22	20.7	19.6	17.6	24.8	22	19.8	18	24.4	22	20	18.3	L/D	Screw L /D ratio
Injection volume (theoretical)	cm ³	2212	2497	2799	3456	2262	2863	3534	4276	2990	3691	4467	5316	cm ³	Injection volume (theoretical)
Injection weight (PS)	g	2013	2272	2547	3145	2058	2605	3216	3892	2721	3359	4065	4837	g	Injection weight (PS)
Injection rate	g/s	492	555	623	769	484	612	756	915	569	703	850	1012	g/s	Injection rate
Injection pressure	MPa	193	171	153	124	223	176	143	118	218	176	146	122	MPa	Injection pressure
Plasticizing rate (GPPS) ③	g/s	73.6	81.4	92.6	113	73.3	92.0	113	133	89.5	110	130	152	g/s	Plasticizing rate (GPPS) ③
Plasticizing rate (HDPE) ④	g/s	107	118	134	165	108	137	169	199	132	162	193	224	g/s	Plasticizing rate (HDPE) ④
Screw speed	rpm	165				150				135				rpm	Screw speed
OTHERS														OTHERS	
Pump motor power	kW	65				75				85				kW	Pump motor power
Heating power	kW	48				54				71				kW	Heating power
Machine dimension (L x W x H) ⑤	m	7.89×2.86×2.92				8.54×2.86×2.93				8.75×2.86×2.95				m	Machine dimension (L x W x H) ⑤
Machine weight	t	27				28				30				t	Machine weight
Hopper capacity	kg	100				100				100				kg	Hopper capacity
Oil tank ⑥	l	590				730				830				l	Oil tank ⑥

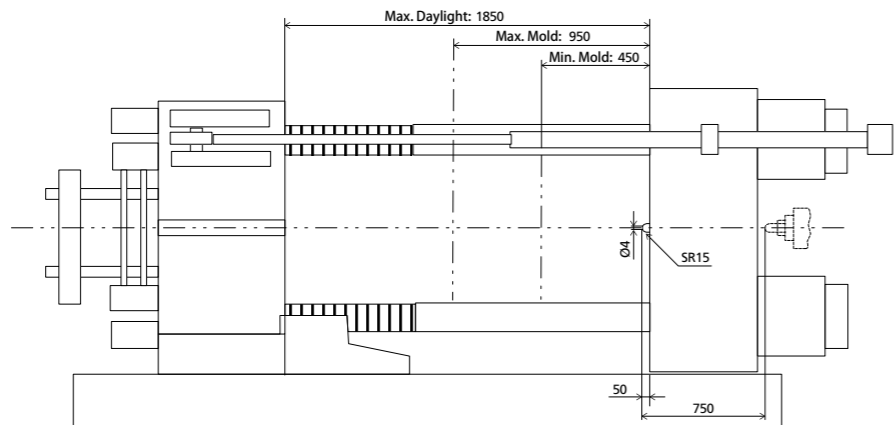
NOTE:

- ① with min. mold height / with max. mold height.
- ② moving platen: 2/3 of max. mold weight.
- ③ Plasticizing capacity (GPPS): GB standard, with application of GPPS plasticizing capacity of 3-zone screws.
- ④ Plasticizing capacity (HDPE): Euromap 19, with application of HDPE plasticizing capacity of barrier screws
The above plasticizing capacity is for reference only.
- ⑤ This refers to the machine's net size, not including the width of the operation platform and ladder.
- ⑥ The oil tank volume refers to the volume of the oil tank itself, excluding the volume in cylinder and pipeline. In this sense, the customer is advised to prepare the hydraulic oil according to 1.35 times of the oil tank volume.

We reserve the right to make changes as a result of further technical advantages.

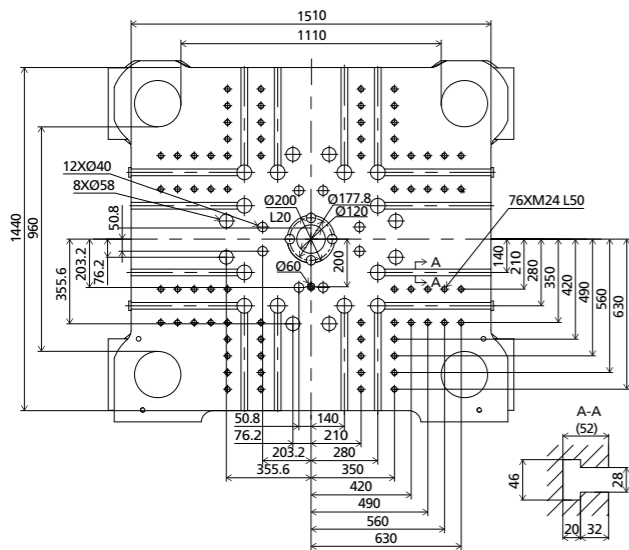
DIMENSIONS JU7500/SE

Clamping Unit



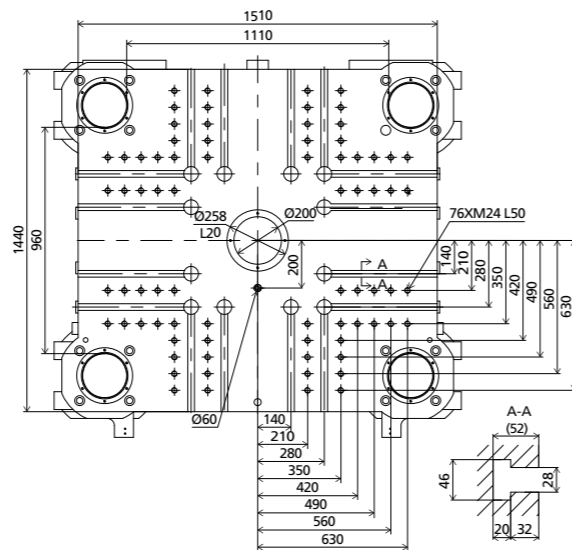
Platen dimensions

Moving platen



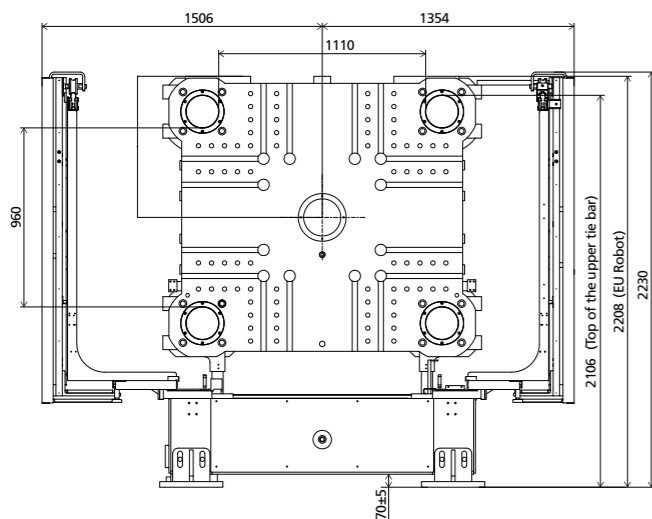
Platen dimensions

Fixed platen



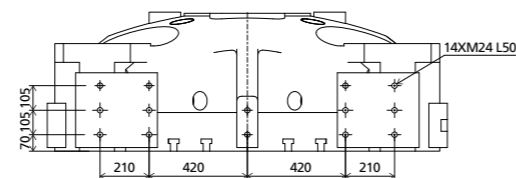
Robot

Mechanical interface

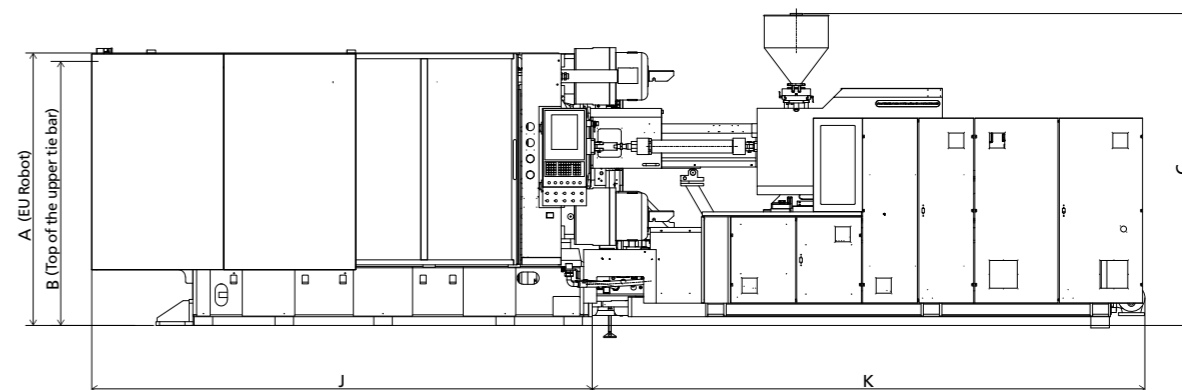


Robot

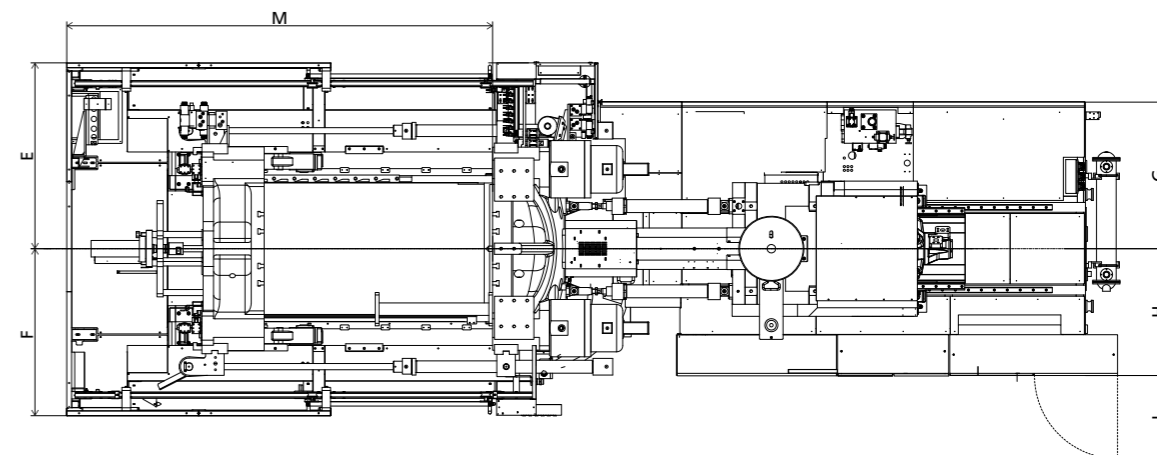
Top view fixed platen



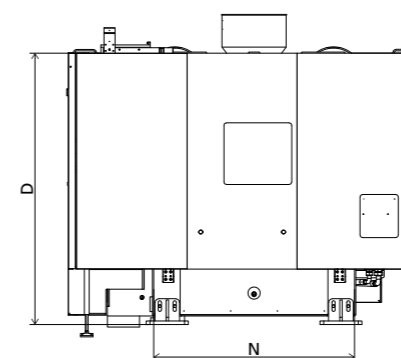
Front view



Top view



Side view



■ Standard

	A	B	C	D	E	F	G	H	I	J	K	M	N
4300	2208	2106	2915	2200	1506	1354	1258	942	675	4055	3827	3450	1627
5050	2208	2106	2930	2200	1506	1354	1188	1028	675	4055	4478	3450	1627
6500	2208	2106	2945	2200	1506	1354	1217	1043	675	4055	4689	3450	1627

INJECTION UNIT
DIMENSIONS (mm)

We reserve the right to make changes as a result of further technical advantages.

SPECIFICATION JU9000/SE

SPECIFICATIONS
INJECTION UNIT

		5050				JU9000/SE 6500				8550					
CLAMPING UNIT														CLAMPING UNIT	
Clamping force	kN													kN	Clamping force
Dist. between tie bars (HxV)	mm													mm	Dist. between tie bars (HxV)
Mold height max.	mm													mm	Mold height max.
Mold height min.	mm													mm	Mold height min.
Ejector stroke	mm													mm	Ejector stroke
Ejector force	kN													kN	Ejector force
Max. daylight	mm													mm	Max. daylight
Mold opening stroke ①	mm													mm	Mold opening stroke ①
Max. mold weight ②	t													t	Max. mold weight ②
INJECTION UNIT		A	B	C	D	A	B	C	D	A	B	C	D	INJECTION UNIT	
Screw diameter	mm	80	90	100	110	90	100	110	120	100	110	120	130	mm	Screw diameter
Screw L /D ratio	L/D	24.8	22	19.8	18	24.4	22	20	18.3	24.2	22	20.2	18.6	L/D	Screw L /D ratio
Injection volume (theoretical)	cm ³	2262	2863	3534	4276	2990	3691	4467	5316	4006	4847	5768	6769	cm ³	Injection volume (theoretical)
Injection weight (PS)	g	2058	2605	3216	3892	2721	3359	4065	4837	3645	4410	5249	6160	g	Injection weight (PS)
Injection rate	g/s	484	612	756	915	569	703	850	1012	713	863	1027	1205	g/s	Injection rate
Injection pressure	MPa	223	176	143	118	218	176	146	122	213	176	148	126	MPa	Injection pressure
Plasticizing rate (GPPS) ③	g/s	73.3	92.0	113	133	89.5	110	130	152	101	121	140	161	g/s	Plasticizing rate (GPPS) ③
Plasticizing rate (HDPE) ④	g/s	108	137	169	199	132	162	193	224	147	177	201	231	g/s	Plasticizing rate (HDPE) ④
Screw speed	rpm	150				135				116				rpm	Screw speed
OTHERS														OTHERS	
Pump motor power	kW	75				85				112				kW	Pump motor power
Heating power	kW	54				71				83				kW	Heating power
Machine dimension (L x W x H) ⑤	m	9.10x3.21x3.07				9.12x3.21x3.09				9.54x3.21x3.10				m	Machine dimension (L x W x H) ⑤
Machine weight	t	33				35				37				t	Machine weight
Hopper capacity	kg	100				100				100				kg	Hopper capacity
Oil tank ⑥	l	730				830				910				l	Oil tank ⑥

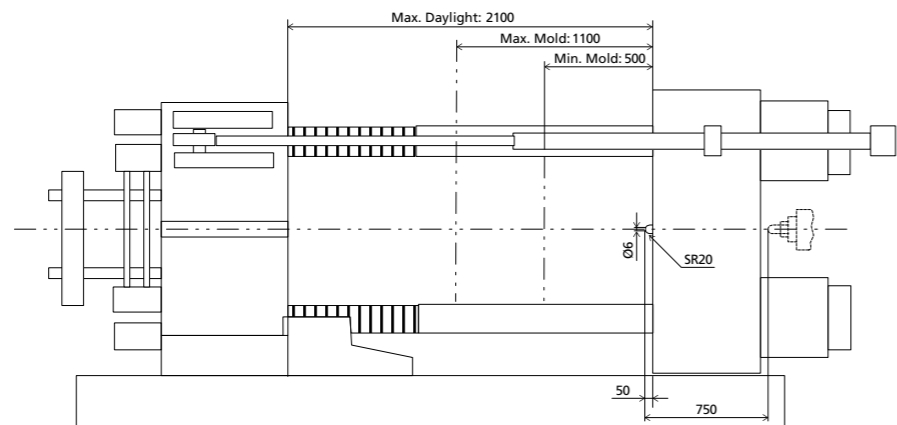
NOTE:

- ① with min. mold height / with max. mold height.
- ② moving platen: 2/3 of max. mold weight.
- ③ Plasticizing capacity (GPPS): GB standard, with application of GPPS plasticizing capacity of 3-zone screws.
- ④ Plasticizing capacity (HDPE): Euromap 19, with application of HDPE plasticizing capacity of barrier screws
The above plasticizing capacity is for reference only.
- ⑤ This refers to the machine's net size, not including the width of the operation platform and ladder.
- ⑥ The oil tank volume refers to the volume of the oil tank itself, excluding the volume in cylinder and pipeline. In this sense, the customer is advised to prepare the hydraulic oil according to 1.35 times of the oil tank volume.

We reserve the right to make changes as a result of further technical advantages.

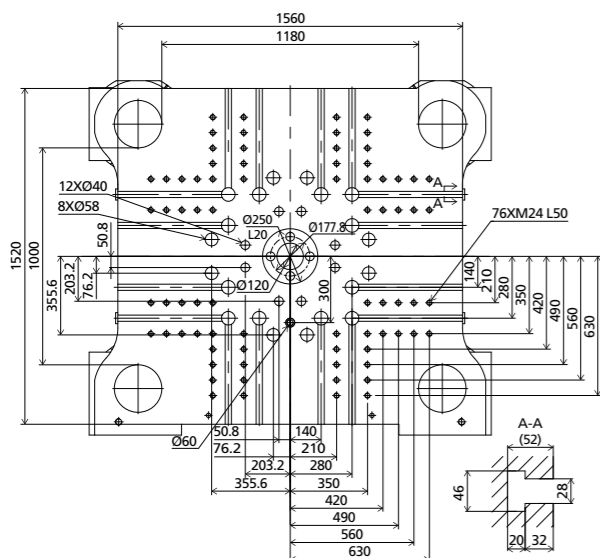
DIMENSIONS JU9000/SE

Clamping Unit



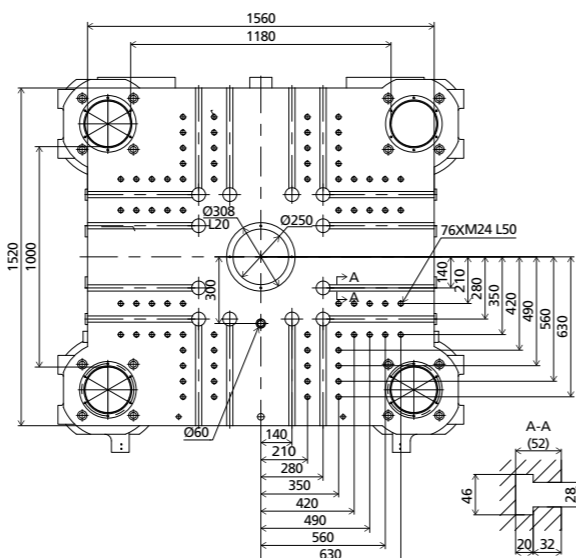
Platen dimensions

Moving platen



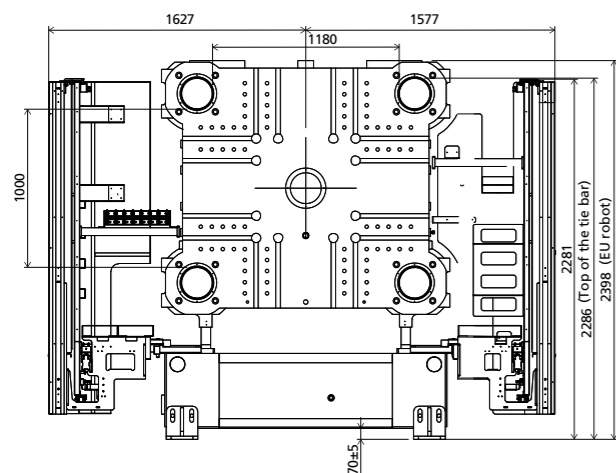
Platen dimensions

Fixed platen



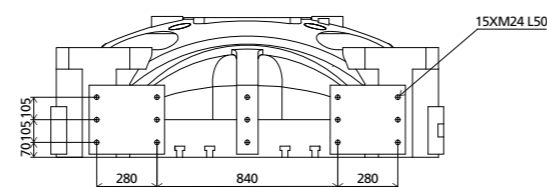
Robot

Mechanical interface

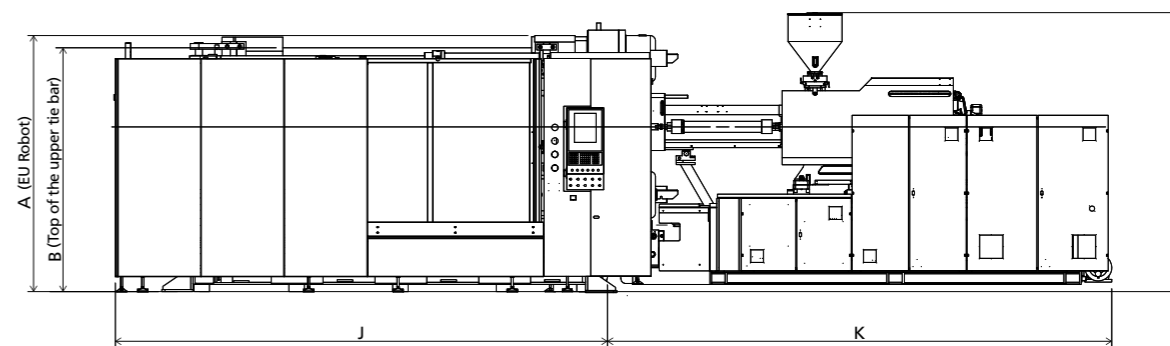


Robot

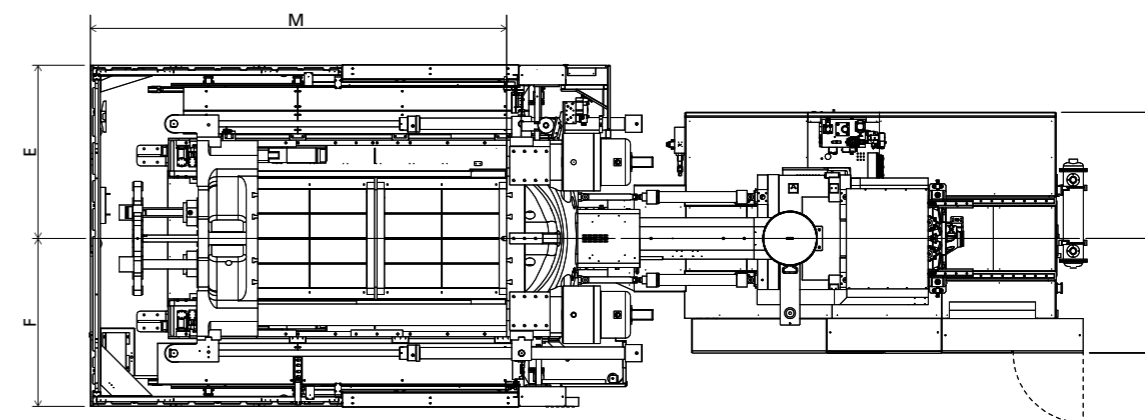
Top view fixed platen



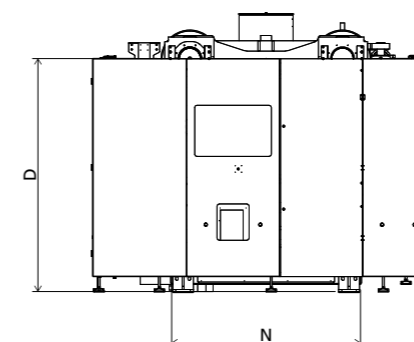
Front view



Top view



Side view



■ Standard

	A	B	C	D	E	F	G	H	I	J	K	M	N
5050	2398	2286	3070	2262	1627	1577	1188	1028	674	4512	4582	3857	1766
6500	2398	2286	3085	2262	1627	1577	1213	1043	674	4512	4588	3857	1766
8550	2398	2286	3095	2262	1627	1577	1213	1103	674	4512	5020	3857	1766

INJECTION UNIT
DIMENSIONS (mm)

We reserve the right to make changes as a result of further technical advantages.

SPECIFICATION JU10800/SE

SPECIFICATIONS
INJECTION UNIT

		6500				8550				11200					
		A	B	C	D	A	B	C	D	A	B	C	D		
CLAMPING UNIT															
Clamping force	kN					10800								kN	Clamping force
Dist. between tie bars (H×V)	mm					1260×1100								mm	Dist. between tie bars (H×V)
Mold height max.	mm					1200								mm	Mold height max.
Mold height min.	mm					500								mm	Mold height min.
Ejector stroke	mm					350								mm	Ejector stroke
Ejector force	kN					230								kN	Ejector force
Max. daylight	mm					2400								mm	Max. daylight
Mold opening stroke ①	mm					1900/1200								mm	Mold opening stroke ①
Max. mold weight ②	t					16								t	Max. mold weight ②
INJECTION UNIT															
Screw diameter	mm	90	100	110	120	100	110	120	130	110	120	130	140	mm	Screw diameter
Screw L /D ratio	L/D	24.4	22	20	18.3	24.2	22	20.2	18.6	26.2	24	22.2	20.6	L/D	Screw L /D ratio
Injection volume (theoretical)	cm ³	2990	3691	4467	5316	4006	4847	5768	6769	5227	6220	7300	8467	cm ³	Injection volume (theoretical)
Injection weight (PS)	g	2721	3359	4065	4837	3645	4410	5249	6160	4756	5661	6643	7705	g	Injection weight (PS)
Injection rate	g/s	569	703	850	1012	713	863	1027	1205	784	933	1095	1269	g/s	Injection rate
Injection pressure	MPa	218	176	146	122	213	176	148	126	214	180	153	132	MPa	Injection pressure
Plasticizing rate (GPPS) ③	g/s	89.5	110	130	152	101	121	140	161	123	142	164	187	g/s	Plasticizing rate (GPPS) ③
Plasticizing rate (HDPE) ④	g/s	132	162	193	224	147	177	201	231	187	217	240	273	g/s	Plasticizing rate (HDPE) ④
Screw speed	rpm	135				116				105				rpm	Screw speed
OTHERS															
Pump motor power	kW	85				112				130				kW	Pump motor power
Heating power	kW	71				83				104				kW	Heating power
Machine dimension (L x W x H) ⑤	m	9.40×3.29×3.09				9.78×3.29×3.10				10.52×3.29×3.71				m	Machine dimension (L x W x H) ⑤
Machine weight	t	41				42				46				t	Machine weight
Hopper capacity	kg	100				100				200				kg	Hopper capacity
Oil tank ⑥	l	830				910				1250				l	Oil tank ⑥

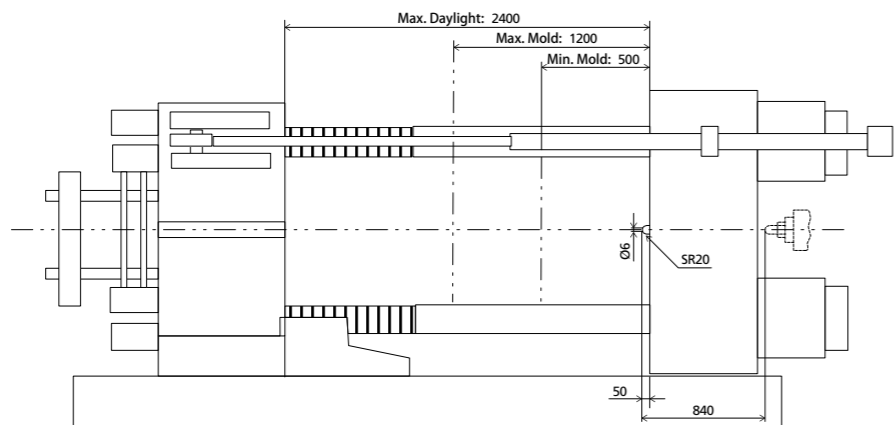
NOTE:

- ① with min. mold height / with max. mold height.
- ② moving platen: 2/3 of max. mold weight.
- ③ Plasticizing capacity (GPPS): GB standard, with application of GPPS plasticizing capacity of 3-zone screws.
- ④ Plasticizing capacity (HDPE): Euromap 19, with application of HDPE plasticizing capacity of barrier screws
The above plasticizing capacity is for reference only.
- ⑤ This refers to the machine's net size, not including the width of the operation platform and ladder.
- ⑥ The oil tank volume refers to the volume of the oil tank itself, excluding the volume in cylinder and pipeline. In this sense, the customer is advised to prepare the hydraulic oil according to 1.35 times of the oil tank volume.

We reserve the right to make changes as a result of further technical advantages.

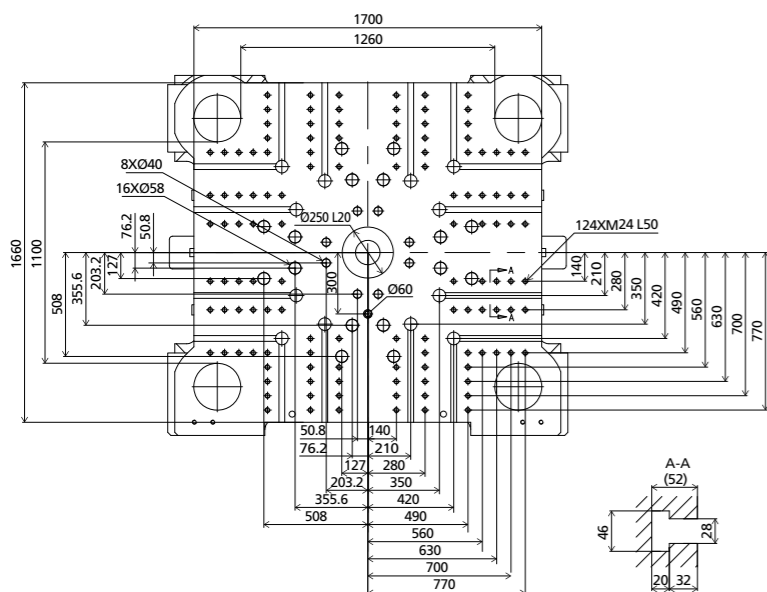
DIMENSIONS JU10800/SE

Clamping Unit



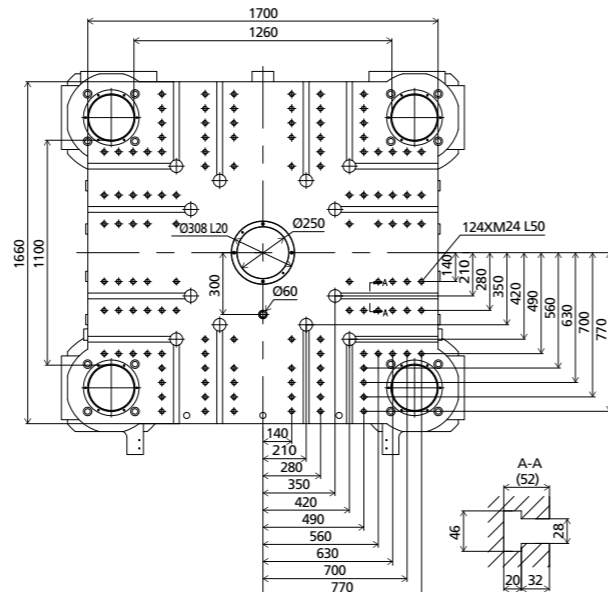
Platen dimensions

Moving platen



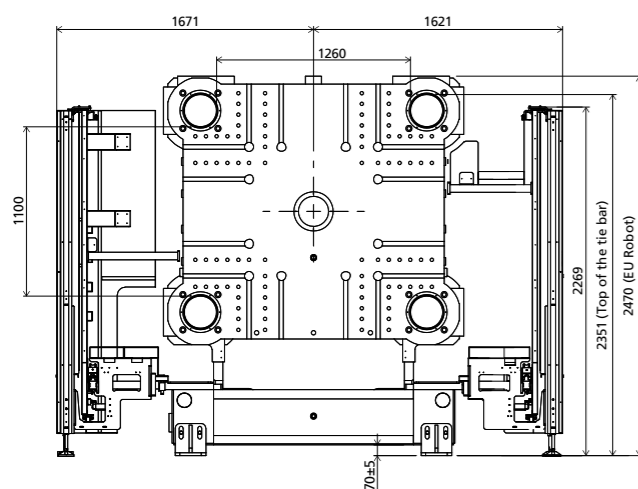
Platen dimensions

Fixed platen



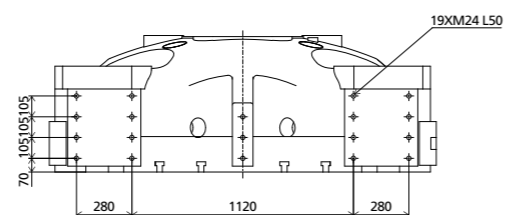
Robot

Mechanical interface

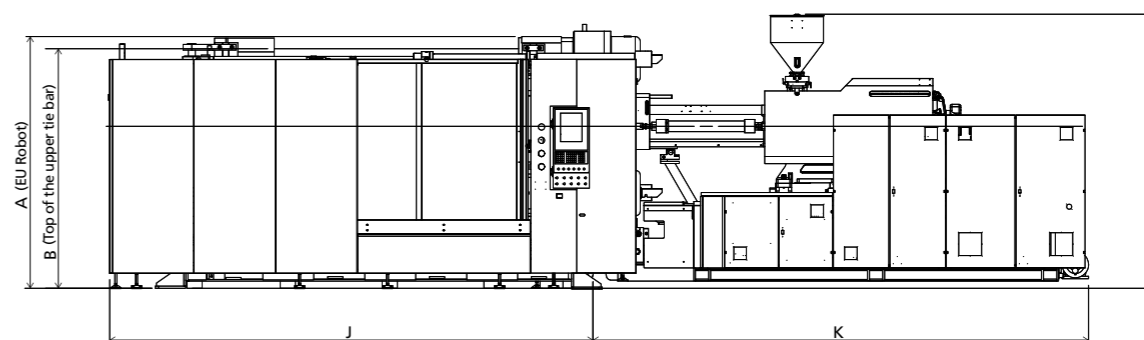


Robot

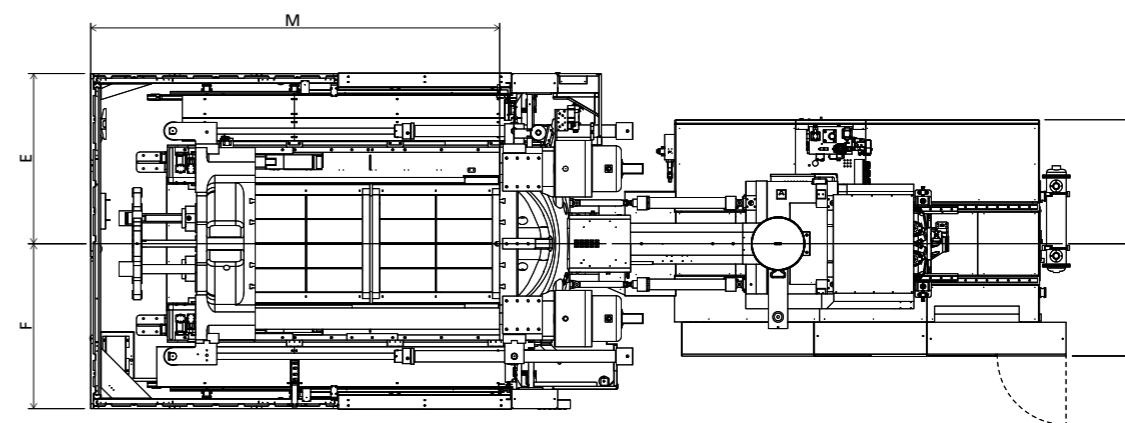
Top view fixed platen



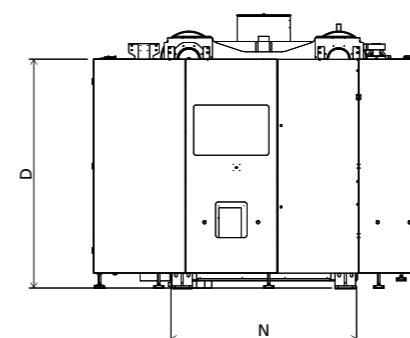
Front view



Top view



Side view



■ Standard

	A	B	C	D	E	F	G	H	I	J	K	M	N
6500	2470	2351	3085	2247	1670	1620	1213	1043	674	4699	4696	4014	1821
8550	2470	2351	3095	2247	1670	1620	1213	1103	674	4699	4910	4014	1821
11200	2470	2351	3703	2247	1670	1620	1303	1282	744	4699	5820	4014	1821

INJECTION UNIT
DIMENSIONS (mm)

We reserve the right to make changes as a result of further technical advantages.